

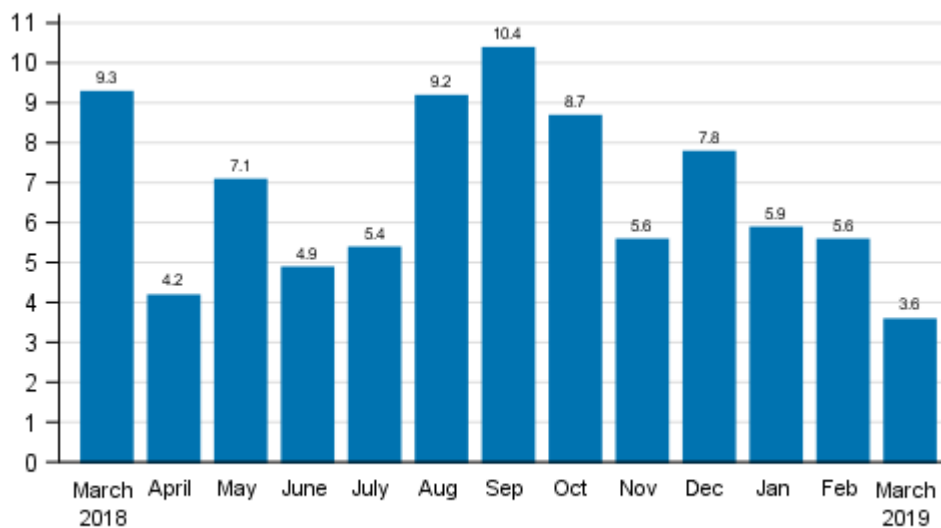
# Index of turnover in industry

2019, March

## Turnover in manufacturing grew by 3.6 per cent in March

According to Statistics Finland, working day adjusted turnover in manufacturing (TOL BCD) increased in March by 3.6 per cent from the corresponding period of the previous year. Among the main manufacturing industries, the growth in working day adjusted turnover was strongest in the chemical industry, 13.1 per cent and in the forest industry, 6.0 per cent. Seasonally adjusted turnover in manufacturing (TOL BCD) remained almost unchanged in March, growth from February only 0.1 per cent.

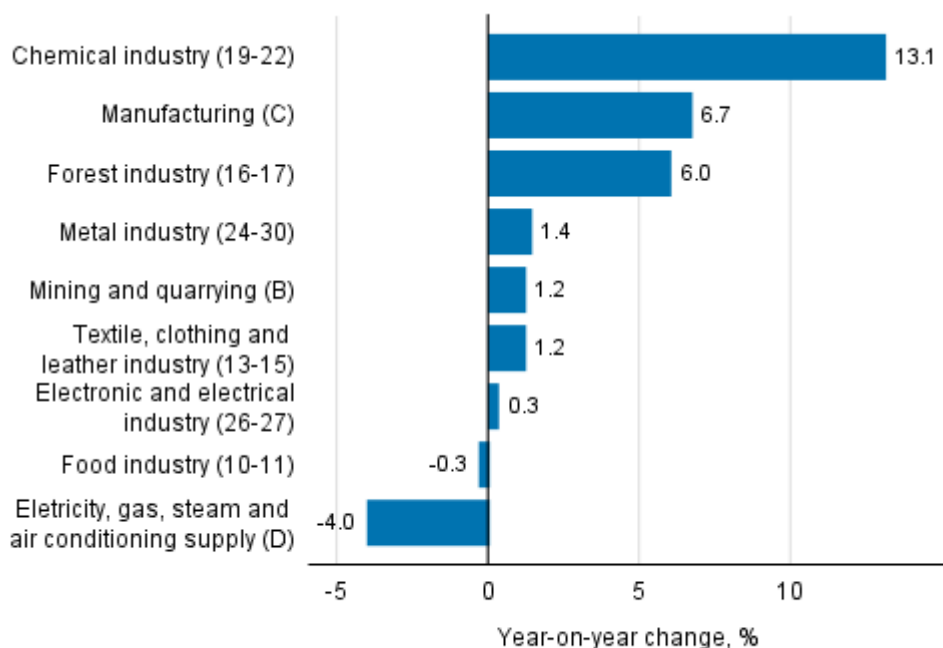
### Annual change in working day adjusted turnover in manufacturing (BCD), %, (TOL 2008)



Source: Statistics Finland

Among the main industries, turnover growth was slowest in the electrical and electronics industry, 0.3 per cent. Also, in the textile, apparel and leather production industry and in mining and quarrying industry, turnover growth was modest, only 1.2 per cent over the year. Turnover contracted from the previous year in the industry of electricity, gas, steam and air conditioning supply, by 4.0 per cent, and in the food industry, by 0.3 per cent.

**Annual change in working day adjusted turnover in manufacturing by industry, March 2019, %, (TOL 2008)**

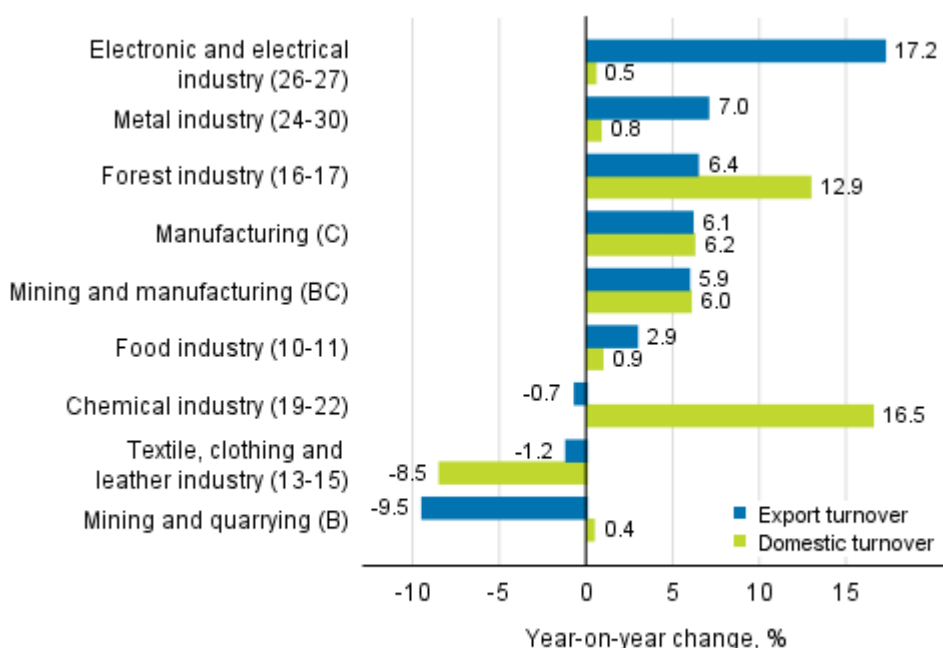


Source: Statistics Finland

**Export turnover and domestic turnover growing in February**

Export turnover grew most in the electrical and electronics industry in February, by 17.2 per cent, in the metal industry, by 7.0 per cent, and the forest industry, by 6.4 per cent. In turn, export turnover decreased in February in mining and quarrying, by 9.5 per cent, in the textile, apparel and leather production industry, by 1.2 per cent, and in the chemical industry, by 0.7 per cent.

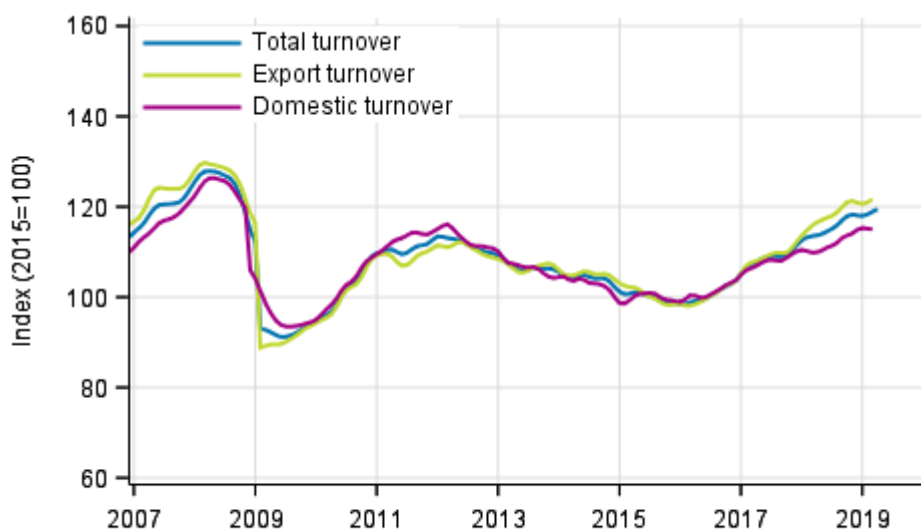
**Annual change in working day adjusted export turnover and domestic turnover in manufacturing by industry, February 2019, %, (TOL 2008)**



Source: Statistics Finland

Domestic turnover grew most in February in the chemical industry, by 16.5 per cent, and in the forest industry, by 12.9 per cent. Domestic turnover declined from the corresponding period in the year before only in the textile, clothing and leather industry, by 8.5 per cent.

**Trend series of turnover, export turnover and domestic turnover in manufacturing (BC), 01/2007 to 03/2019, %, (TOL 2008)**



Source: Statistics Finland

The index of turnover in industry describes enterprises whose main industry is manufacturing. The calculation of the indices is based on the Tax Administration’s self-assessed tax data which are supplemented with data obtained with Statistics Finland’s sales inquiry. The monthly turnovers of manufacturing enterprises can vary considerably, especially in the metal industries. The variation is mainly due to invoicing practices. The final invoice for major machinery deliveries and projects may be recorded in the sales of one month, even if the delivery had required the work of several months or years.

The factors caused by the variation in the number of weekdays are taken into account in adjustment for working days. This means taking into consideration the lengths of months, different weekdays and holidays. In addition, seasonal variation is eliminated from seasonally adjusted series, on account of which it makes sense to compare observations of two successive months as well.

The data for the latest month are preliminary and they may become significantly revised particularly on more detailed industry levels in coming months.

# Contents

## Tables

### Appendix tables

Appendix table 1. Annual change of working-day adjusted turnover in industries of manufacturing, % (TOL 2008).....	5
--	---

## Figures

### Appendix figures

Appendix figure 1. Change from the previous month in seasonally adjusted turnover in manufacturing (BCD), %, (TOL 2008).....	6
--	---

Revisions in these statistics.....	7
------------------------------------	---

## Appendix tables

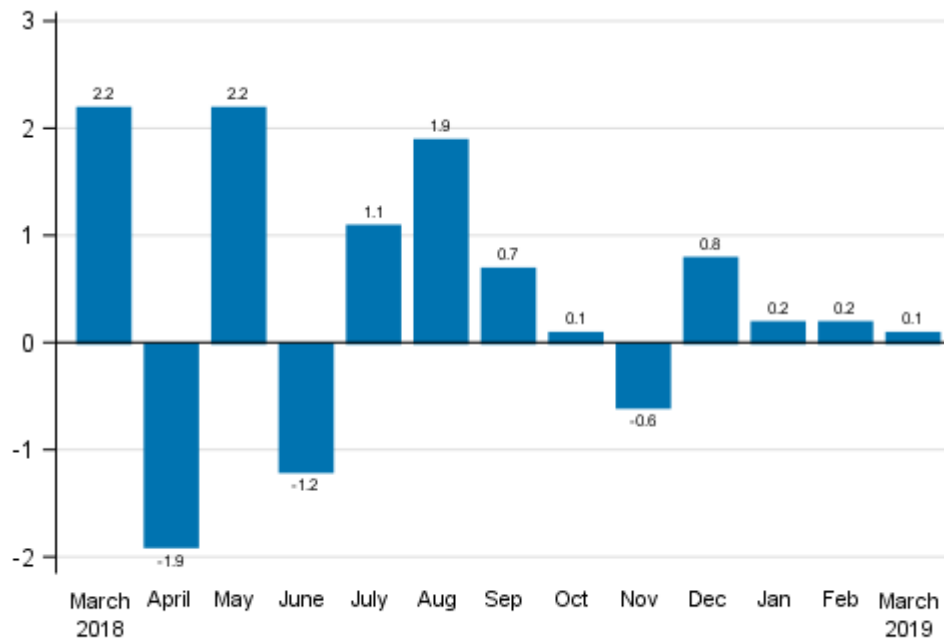
**Appendix table 1. Annual change of working-day adjusted turnover in industries of manufacturing, % (TOL 2008)**

	Year-on-year change by three-month period, % <sup>1)</sup>				Year-on-year change in the latest month, % <sup>1)</sup>
	04-06/2018	07-09/2018	10-12/2018	01-03/2019	03/2019
B Mining and quarrying	14.7	5.7	0.8	3.7	1.2
C Manufacturing	5.3	7.6	5.2	5.4	6.7
D Electricity, gas, steam and air conditioning supply	5.7	14.8	15.4	7.1	-4.0
E Water supply; sewerage, waste management and remediation act	5.5	5.8	4.0	0.7	0.9
10-11 Food industry	-0.2	1.3	2.1	0.5	-0.3
13-15 Textile, clothing and leather industry	-1.5	-2.6	-0.4	0.4	1.2
16-17 Forest industry	6.4	7.7	6.9	5.9	6.0
19-22 Chemical industry	6.8	16.5	10.0	6.6	13.1
24-30 Metal industry	3.8	6.0	5.3	4.1	1.4
26-27 Electronic and electrical industry	-1.2	9.3	3.2	8.3	0.3
13, 14, 17, 20, 21, 24-30 Manufacturing (new orders)	3.7	6.8	6.6	4.7	4.2
B-D Total industry excl. Water supply; sewerage, waste management and remediation	5.4	8.4	7.4	4.9	3.6

1) Year-on-year change compares the value for an examined time period to the value for the corresponding time period twelve months back.

# Appendix figures

**Appendix figure 1. Change from the previous month in seasonally adjusted turnover in manufacturing (BCD), %, (TOL 2008)**



Source: Statistics Finland

## Revisions in these statistics

The data of the statistics have become revised according to the table below. For more information about data revisions, see Section 3 of the quality description (only in Finnish).

### Revisions to annual changes in turnover in sectors of manufacturing<sup>1)</sup>

Industry / Reference period		Year-on-year change, %		Revision, percentage point
		1st release	Latest release (2019-05-15)	
B Mining and quarrying	10/2018	1.3	1.3	0.0
	11/2018	6.8	4.7	-2.1
	12/2018	0.6	-4.1	-4.7
	01/2019	7.0	5.9	-1.1
	02/2019	1.8	0.1	-1.7
C Manufacturing	10/2018	12.1	11.7	-0.4
	11/2018	4.9	5.4	0.5
	12/2018	0.6	1.6	1.0
	01/2019	3.8	3.5	-0.3
	02/2019	5.5	5.9	0.4
D Electricity, gas, steam and air conditioning supply	10/2018	7.7	9.4	1.7
	11/2018	13.1	13.0	-0.1
	12/2018	21.3	21.7	0.4
	01/2019	20.2	22.2	2.0
	02/2019	5.0	4.2	-0.8
E Water supply; sewerage, waste management and remediation act	10/2018	5.2	6.9	1.7
	11/2018	6.2	8.0	1.8
	12/2018	0.7	-1.6	-2.3
	01/2019	1.7	2.5	0.8
	02/2019	0.6	-1.3	-1.9
10-11 Food industry	10/2018	5.5	4.2	-1.3
	11/2018	1.5	2.0	0.5
	12/2018	0.6	-0.3	-0.9
	01/2019	2.2	2.3	0.1
	02/2019	0.9	0.9	0.0
13-15 Textile, clothing and leather industry	10/2018	3.8	4.9	1.1
	11/2018	-2.4	-2.0	0.4
	12/2018	-2.8	-4.1	-1.3
	01/2019	1.6	4.4	2.8
	02/2019	-4.5	-4.1	0.4
16-17 Forest industry	10/2018	10.4	10.5	0.1
	11/2018	4.2	4.4	0.2
	12/2018	5.2	5.8	0.6
	01/2019	2.8	3.5	0.7
	02/2019	8.1	8.2	0.1
19-22 Chemical industry	10/2018	15.0	15.3	0.3
	11/2018	17.6	17.3	-0.3
	12/2018	-1.4	-1.5	-0.1
	01/2019	1.5	1.3	-0.2
	02/2019	4.7	4.6	-0.1

Industry / Reference period		Year-on-year change, %		Revision, percentage point
		1st release	Latest release (2019-05-15)	
24-30 Metal industry	10/2018	13.6	12.7	-0.9
	11/2018	1.7	2.1	0.4
	12/2018	-0.2	1.5	1.7
	01/2019	5.7	5.0	-0.7
	02/2019	5.8	6.5	0.7
26-27 Electronic and electrical industry	10/2018	19.6	16.6	-3.0
	11/2018	-6.8	-5.7	1.1
	12/2018	-0.7	-0.3	0.4
	01/2019	14.1	13.7	-0.4
	02/2019	14.4	14.1	-0.3
13, 14, 17, 20, 21, 24-30 Manufacturing (new orders)	10/2018	12.7	12.2	-0.5
	11/2018	4.3	4.7	0.4
	12/2018	1.8	3.2	1.4
	01/2019	4.4	4.0	-0.4
	02/2019	5.9	6.2	0.3

1) The 1st release refers to the time when data for the reference period were released for the first time. The revision describes the difference of annual change percentages between the first and latest release. The data were calculated from annual changes in the original index series.



## Revisions to long-term annual changes in turnover in sectors of manufacturing

Industry	Year	Average <sup>1)</sup>	Average for absolute values <sup>2)</sup>
B Mining and quarrying	2015	-0.1	1.1
	2016	-0.1	0.8
	2017	-0.1	0.6
C Manufacturing	2015	0.1	0.3
	2016	0.1	0.3
	2017	-0.1	0.4
D Electricity, gas, steam and air conditioning supply	2015	-0.1	0.7
	2016	-0.3	0.9
	2017	-0.2	0.4
E Water supply; sewerage, waste management and remediation act	2015	-0.2	0.7
	2016	-0.5	0.6
	2017	-0.8	0.9
10-11 Food industry	2015	-0.6	0.7
	2016	-0.1	0.2
	2017	0.0	0.2
13-15 Textile, clothing and leather industry	2015	0.7	1.2
	2016	-1.8	2.1
	2017	-0.3	0.9
16-17 Forest industry	2015	0.0	0.1
	2016	0.5	0.5
	2017	0.0	0.2
19-22 Chemical industry	2015	0.0	0.1
	2016	0.1	0.4
	2017	-0.1	0.2
24-30 Metal industry	2015	0.3	0.6
	2016	0.1	0.4
	2017	-0.2	0.8
26-27 Electronic and electrical industry	2015	1.1	1.3
	2016	-0.2	0.3
	2017	0.4	2.3
13, 14, 17, 20, 21, 24-30 Manufacturing (new orders)	2015	0.2	0.4
	2016	0.1	0.4
	2017	-0.1	0.6

1) In 2015 the average was calculated from data revised between the first and seventh release months in the statistical reference year. The average for 2016 and 2017 was calculated upon completion of the data for the first and last release months in the statistical reference year, when the official structural business and financial statement statistics are also published. The data were calculated from annual changes in the original index series.

2) In 2015 the average was calculated from the absolute values of differences between the first and seventh release months. The average for 2016 and 2017 was calculated from the absolute values of differences between the first and last release months in the statistical reference year, when the official structural business and financial statement statistics are also published. The data were calculated from annual changes in the original index series.

## Inquiries

Maija Sappinen 029 551 3348

Kirsi-Maaria Manninen 029 551 2681

Director in charge:

Mari Ylä-Jarkko

[myynti.teollisuus@stat.fi](mailto:myynti.teollisuus@stat.fi)

[www.stat.fi](http://www.stat.fi)

Source: Index of turnover in industry 2019, March, Statistics Finland