

# Trend Indicator of Output

2016, August

## Output of the national economy fell in August

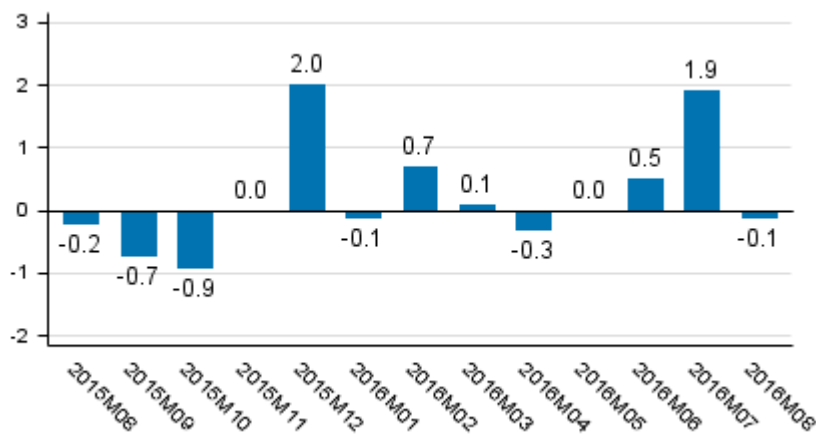
Seasonally adjusted output fell by 1.2 per cent in August from the month before. Adjusted for working days, output was 0.1 per cent lower than one year before. According to revised data, working day adjusted output grew in July by 1.9 per cent (previously 1.5 per cent) from July 2015.

**Volume of total output 2005 to 2016, trend and seasonally adjusted series**



The series of the Trend Indicator of Output are seasonally adjusted with the Tramo/Seats method. The latest observations of the series adjusted for seasonal and random variation (seasonally adjusted and trend series) become revised with new observations in seasonal adjustment methods. Revisions especially at turning points of economic trends may be significant, which should be taken into consideration when using seasonally adjusted and trend data.

**Working day adjusted change of total output from previous year's corresponding month, %**



Working day adjusted primary production remained on level with the previous year. Secondary production increased by four per cent and services contracted by one per cent from August 2015.

Primary production refers to agriculture, hunting, forestry and fishing. Secondary production includes manufacturing and construction. Services comprise trade, hotel and restaurant activities, transport and business activities, as well as real estate, renting and research services, financial intermediation and insurance, and public services.

# Contents

Revisions in these statistics.....4

# Revisions in these statistics

## Revision of annual volume change, %

		2015M12	2016M01	2016M02	2016M03	2016M04	2016M05	2016M06	2016M07
Seasonally adjusted month-on-month change, %	1. release	-0,2	0,2	-0,3	-0,4	-1,0	-0,6	-0,1	0,5
	Previous release	0,6	-0,8	0,3	0,1	-0,3	0,1	0,6	0,5
	Latest release	0,6	-0,8	0,4	0,0	-0,1	0,0	0,4	0,8
	Revision, %-points (latest minus first)	0,8	-1,0	0,7	0,4	0,9	0,6	0,5	0,3
Working day adjusted year-on-year change, %	1. release	0,6	1,0	0,6	0,7	-0,4	-0,3	0,5	1,5
	Previous release	2,0	-0,1	0,6	0,2	-0,4	-0,0	0,7	1,5
	Latest release	2,0	-0,1	0,7	0,1	-0,3	0,0	0,5	1,9
	Revision, %-points (latest minus first)	1,4	-1,1	0,1	-0,6	0,1	0,3	0,0	0,4

## Average revision starting from 2014M05, %-points

	Average revision (absolute values)	Average revision
Seasonally adjusted month-on-month change	0,6	0,4
Working day adjusted year-on-year change	0,9	0,1

## Inquiries

Ida Peltonen 029 551 3334

Samu Hakala 029 551 3756

Director in charge:

Ville Vertanen

[kansantalous.suhdanteet@tilastokeskus.fi](mailto:kansantalous.suhdanteet@tilastokeskus.fi)

[www.stat.fi](http://www.stat.fi)

Source: Trend Indicator of Output 2016 August, Statistics Finland