

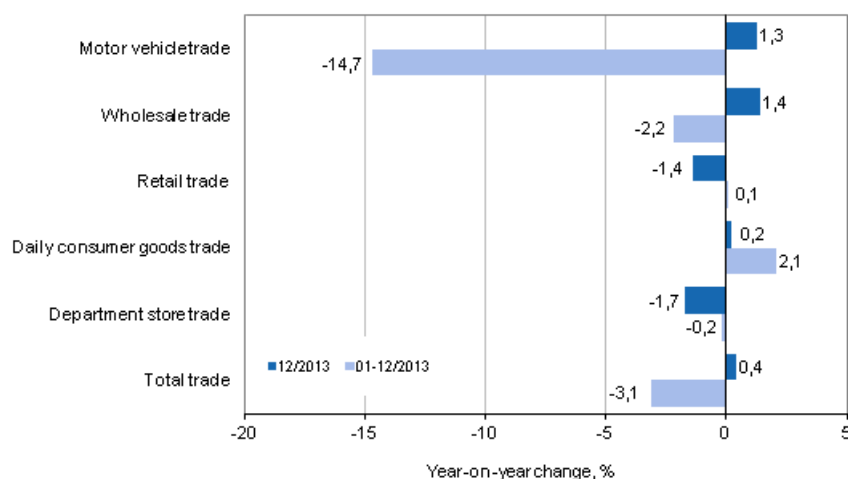
Turnover of trade

2013, December

Retail trade sales fell by 1.4 per cent in December from one year ago

According to Statistics Finland, retail trade sales decreased by 1.4 per cent in December 2013 from December 2012. In daily consumer goods trade, sales rose by 0.2 per cent, while sales in department store trade went down by 1.7 per cent from one year ago. Wholesale trade sales went up by 1.4 per cent and motor vehicle sales by 1.3 per cent from one year previously. In total trade, sales rose in December by 0.4 per cent from the corresponding period of the previous year.

Annual change in turnover in trade industries, % (TOL 2008)



The sales volume in retail trade went down by 1.9 per cent in December from the previous year's December. The sales volume in wholesale trade went up by 2.2 per cent and in motor vehicle sales by 1.7 per cent from one year ago. Thus, sales increased in total trade by 0.7 per cent from the year before. The volume index of sales is calculated by removing the effect of price changes from the value index series.

Sales fell in total trade by 3.1 per cent during 2013 from 2012

In the January to December period, retail trade sales grew by 0.1 per cent compared with the corresponding period of the previous year. In contrast, wholesale trade sales went down by 2.2 per cent and motor vehicle sales by 14.7 per cent over the corresponding period. In total trade, sales were down in January to December by 3.1 per cent on the corresponding period of the year before.

Contents

Tables

Appendix tables

Appendix table 1. Year-on-year change in turnover in trade industries, % (TOL 2008).....4

Figures

Appendix figures

Appendix figure 1. Turnover of motor vehicles, wholesale and retail trade, trend series (TOL 2008).....5

Revisions in these statistics.....6

Appendix tables

Appendix table 1. Year-on-year change in turnover in trade industries, % (TOL 2008)

	Year-on-year change by quarter, % ¹⁾				Cumulative year-on-year change, % ¹⁾	Year-on-year change in the latest month, % ¹⁾
	01-03/2013	04-06/2013	07-09/2013	10-12/2013		
Total trade (G)	-7,7	-3,3	-0,3	-1,1	-3,1	0,4
Motor vehicle trade (45)	-35,8	-14,7	-0,1	2,6	-14,7	1,3
Wholesale trade (46)	-3,5	-2,8	-0,7	-1,9	-2,2	1,4
Retail trade (47)	0,0	0,8	0,3	-0,6	0,1	-1,4
Daily consumer goods trade (4711, 472) ²⁾	2,4	2,2	2,2	1,4	2,1	0,2
Department store trade (4719) ³⁾	-1,0	1,8	-1,4	-0,2	-0,2	-1,7

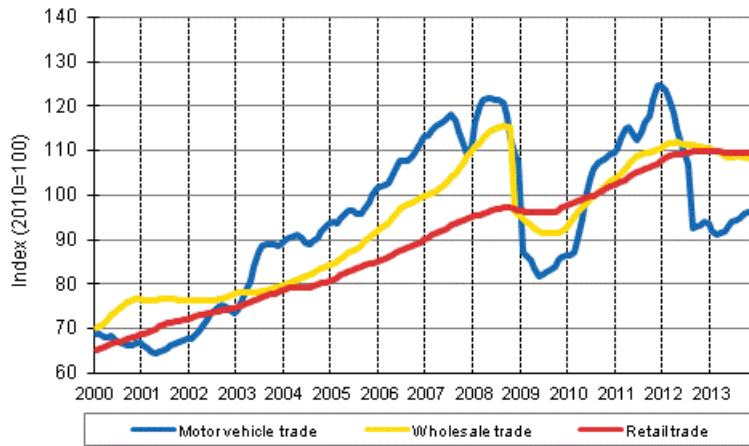
1) Year-on-year change compares the value for an examined time period to the value for the corresponding time period twelve months back.

2) According to the Business Register, the share of daily consumer goods (4711, 472) of turnover in retail trade was 47.6 per cent in 2012.

3) According to the Business Register, the share of retail sale in department stores (4719) of turnover in retail trade was 11.8 per cent in 2012.

Appendix figures

Appendix figure 1. Turnover of motor vehicles, wholesale and retail trade, trend series (TOL 2008)



Source: Statistics Finland

Revisions in these statistics

The data of the statistics have become revised according to the table below. For more information about data revisions, see Section 3 of the quality description (only in Finnish).

Revision of annual changes in turnover in main industries¹⁾

Industry / Reference period		Year-on-year change,%		Revision, percentage point
		1st release	Latest release (2014-02-14)	
G Wholesale and retail trade	07/2013	1,0	0,9	-0,1
	08/2013	-1,3	-2,0	-0,7
	09/2013	-0,5	0,3	0,8
	10/2013	0,2	0,1	-0,1
	11/2013	-3,6	-3,8	-0,2
45 Wholesale and retail trade and repair of motor vehicles and motorcycles	07/2013	-4,6	-4,7	-0,1
	08/2013	1,0	-0,3	-1,3
	09/2013	5,6	5,1	-0,5
	10/2013	8,5	7,3	-1,2
	11/2013	-0,6	-1,4	-0,8
46 Wholesale trade, except of motor vehicles and motorcycles	07/2013	1,9	1,6	-0,3
	08/2013	-2,6	-3,1	-0,5
	09/2013	-1,4	-0,3	1,1
	10/2013	-1,5	-1,6	-0,1
	11/2013	-6,1	-5,7	0,4
47 Retail trade, except of motor vehicles and motorcycles	07/2013	1,3	1,7	0,4
	08/2013	0,5	-0,5	-1,0
	09/2013	-0,6	-0,3	0,3
	10/2013	0,8	0,7	-0,1
	11/2013	0,2	-1,0	-1,2
Retail sale in non-specialised stores (4711, 472)	07/2013	2,3	3,2	0,9
	08/2013	2,3	2,5	0,2
	09/2013	0,5	0,7	0,2
	10/2013	2,4	3,2	0,8
	11/2013	1,3	1,1	-0,2
Department store trade (4719)	07/2013	0,5	0,0	-0,5
	08/2013	-0,3	-0,8	-0,5
	09/2013	-3,6	-3,6	0,0
	10/2013	0,6	0,8	0,2
	11/2013	0,9	1,0	0,1

1) The 1st release refers to the time when data for the reference period were released for the first time. The revision describes the difference of annual change percentages between the first and latest release.

Revision of long-term annual changes in turnover in main industries

Industry	Year	Average ¹⁾	Average for absolute values ²⁾
Total trade (G)	2010	-0,3	0,9
	2011	-0,8	1,1
	2012	-0,7	0,9
Motor vehicle trade (45)	2010	-1,5	2,9
	2011	-2,6	2,6
	2012	0,6	2,3

Industry	Year	Average ¹⁾	Average for absolute values ²⁾
Wholesale trade (46)	2010	0,1	1,0
	2011	-0,5	1,2
	2012	-0,8	1,1
Retail trade (47)	2010	-0,6	0,8
	2011	-1,1	1,1
	2012	-0,7	0,9
Daily consumer goods trade (4711, 472)	2010	-0,3	0,7
	2011	-0,7	0,7
	2012	-0,5	0,7
Department store trade (4719)	2010	0,1	0,9
	2011	-0,1	0,4
	2012	0,1	0,4

1) Average for data revised between the first and seventh release in the statistical reference year.

2) Average for absolute values of differences between the first and seventh release.

Suomen virallinen tilasto
Finlands officiella statistik
Official Statistics of Finland

Trade 2014

Inquiries

Jarkko Niemistö 09 1734 2951

Tiina Talvio 09 1734 2698

Director in charge:

Hannele Orjala

palvelut.suhdanne@stat.fi

www.stat.fi

Source: Turnover of trade, Statistics Finland