

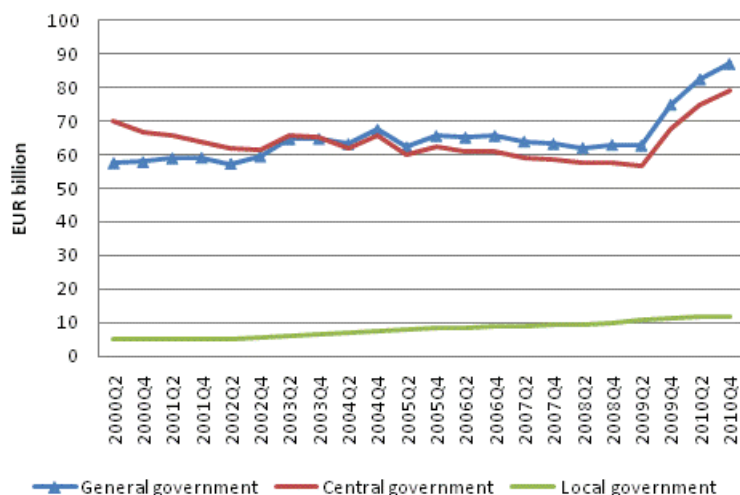
General government EMU debt

2010, 4th quarter

General government debt continued to grow in the last quarter of 2010

In the last quarter of 2010, consolidated general government EMU debt grew by EUR 3.6 billion to EUR 87.2 billion. Of the consolidated general government EMU debt EUR 76.7 billion was central government debt and EUR 10.5 billion local government debt. Over the year, the debt grew by EUR 12.2 billion.

General government EMU debt



The growing debt in the last quarter of 2010 was due to that central government debt increased by EUR 3.3 billion, of which bond debts made up EUR 2.6 billion and short-term debt securities EUR 1.2 billion. The growth of central government debt was held back by a decrease in central government short-term loans by EUR 0.5 billion.

The unconsolidated gross debt of local government, that is, municipalities and joint municipal boards, grew by EUR 0.2 billion in the last quarter of the year. Over the year, local government's long-term loans went up by EUR 0.5 billion and stood at EUR 10.1 billion at the end of the year.

The EMU debt describes general government's debt to other sectors of the national economy and to the rest of the world, and its development is influenced by changes in unconsolidated debt and internal general government debts. Debts between units recorded under general government are deducted from unconsolidated gross debt to obtain consolidated EMU debt. For this reason general government debt is smaller than the combined debts of its sub-sectors.

Contents

Tables

Appendix tables

Appendix table 1. General government EMU debt, EUR billion.....4

Appendix tables

Appendix table 1. General government EMU debt, EUR billion

Sector ¹⁾	Time													
	2000	2001	2002	2003	2004	2005	2006	2007	2008	2009	Q1-10	Q2-10	Q3-10	Q4-10
S13	57.9	59.1	59.6	64.8	67.6	65.7	65.7	63.2	63.0	75.0	77.7	82.6	83.7	87.2
S1311	66.5	64.0	61.3	65.3	65.7	62.3	61.0	58.4	57.7	67.8	70.1	74.9	75.8	79.1
S1313	5.3	5.3	5.6	6.4	7.3	8.3	9.0	9.5	10.0	11.3	11.5	11.6	11.7	11.9
S1314	0.0	0.0	0.1	0.1	0.0	0.0	0.0	0.0	0.0	0.0	0.0	0.0	0.1	0.0

1) S13 General government S1311 Central government S1313 Local government S1314 Social security funds

Suomen virallinen tilasto
Finlands officiella statistik
Official Statistics of Finland

Government Finance 2011

Inquiries

Anu Heikkilä (09) 1734 2309

Timo Ristimäki (09) 1734 2324

Director in charge:

Ari Tyrkkö

rahoitus.tilinpito@stat.fi

www.stat.fi

Source: General government EMU debt, Statistics Finland