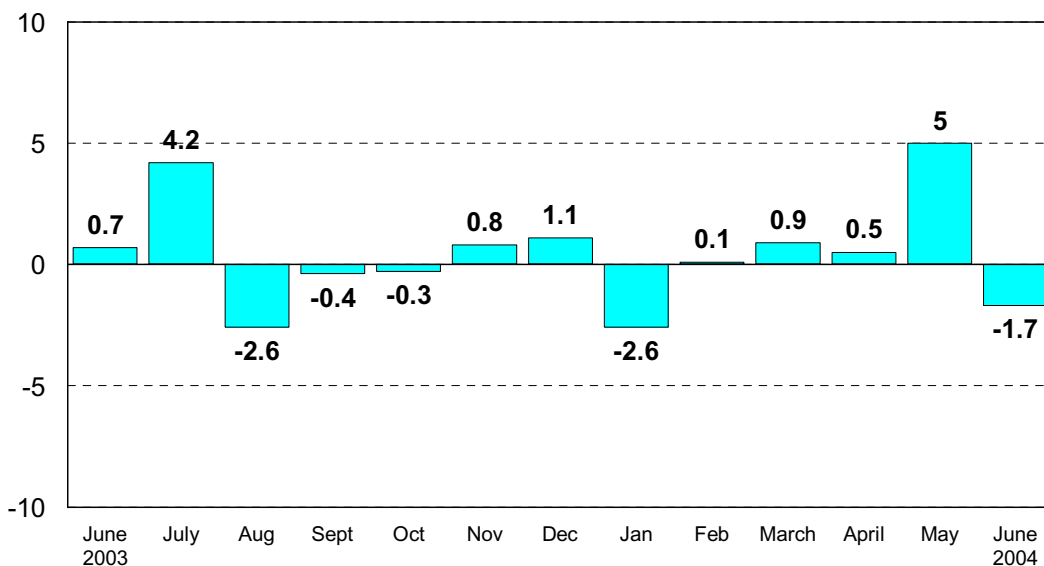


Inquiries: Mr Kari Rautio +358 9 1734 2479, [kari.rautio@stat.fi](mailto:kari.rautio@stat.fi)  
Director in charge: Mr Ilkka Hyppönen

## Industrial output fell by 1.7 per cent from May to June

According to Statistics Finland, seasonally adjusted industrial output was 1.7 per cent lower in June than in May 2004. However, compared to June 2003, seasonally adjusted industrial output grew by 4.9 per cent. Over the January to June period, industrial output increased by 2.1 per cent from the corresponding time period in 2003.

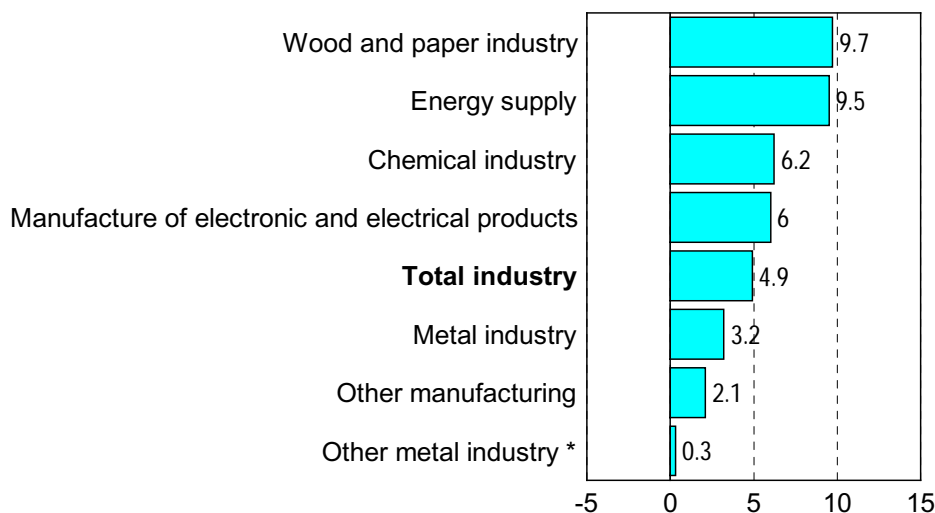
### Seasonally adjusted change from previous month in the volume of industrial output, %



## Industrial output grew by 4.9 per cent this June from June 2003

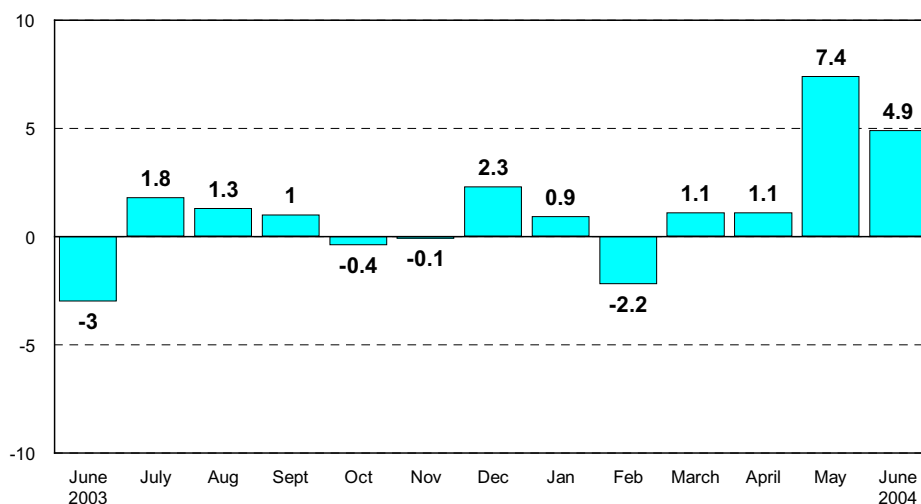
In June 2004, seasonally adjusted industrial output grew by 4.9 per cent from June 2003. Output increased most, by 9.7 per cent, in the wood and paper industry. In the chemical industry output went up by 6.2 per cent. Output did not decline in the main industries in June.

## Seasonally adjusted change in the volume of industrial output 06/2003-06/2004, %



\*Metal industry excl. manufacture of electronic and electrical products

## Seasonally adjusted change in the volume of industrial output from the corresponding time period of the previous year, %



Capacity utilisation rate in manufacturing was 84.5 per cent in June 2004, which is 4.3 percentage points higher than in June 2003. In the pulp and paper industry capacity utilisation rate was 88 per cent, in the metal industry 85 per cent and in the chemical industry 81 per cent. Capacity utilisation rate in other manufacturing was 81 per cent.

Revised data for June will be published on 31 August 2004 at 8 am in connection with the industrial output data for July. Because of the method used, seasonally adjusted figures for previous months may change even if the original figures do not become revised.

**Source: Volume Index of Industrial Output 2004, June. Statistics Finland**  
**StatFin statistical service at: [statfin.stat.fi](http://statfin.stat.fi)**