

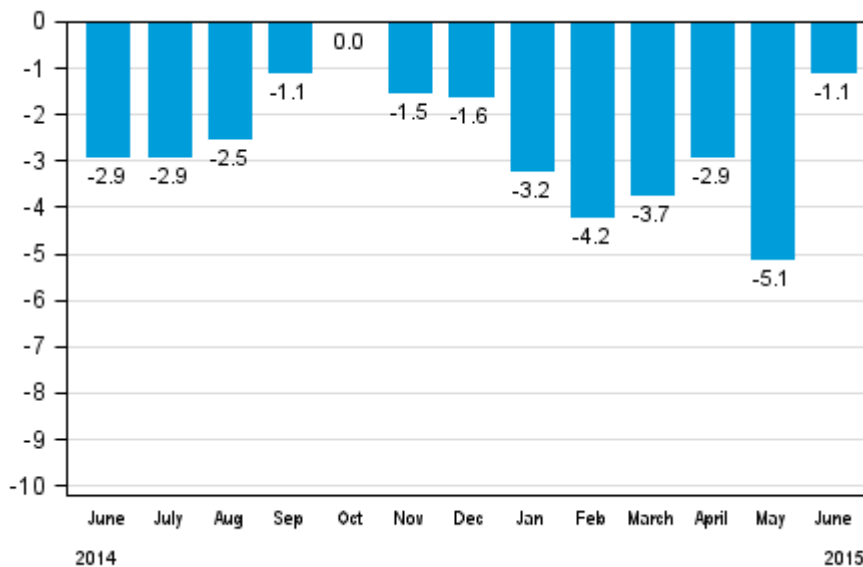
Volume index of industrial output

2015, June

Industrial output decreased by 1.1 per cent year-on-year in June

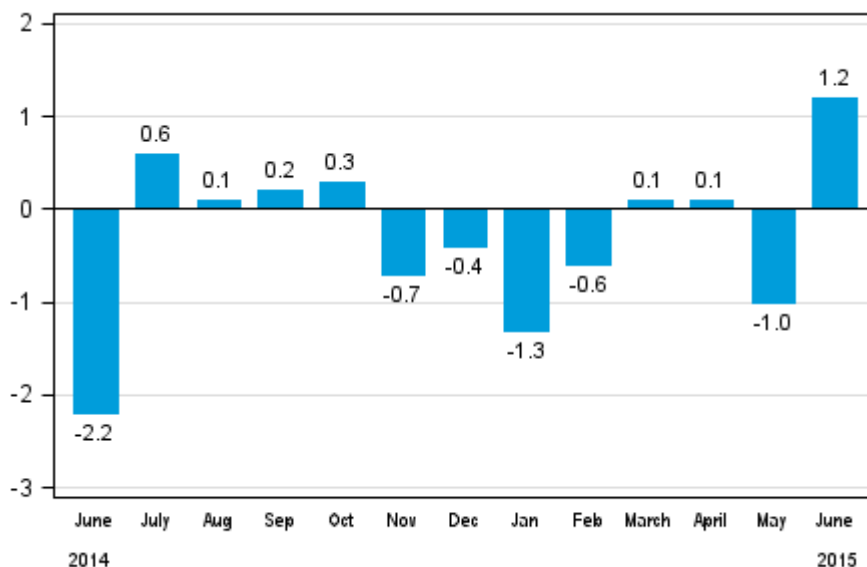
According to Statistics Finland, output of total industries adjusted for working days was 1.1 per cent lower in June 2015 compared to June 2014. During January to June, industrial output declined by 3.4 per cent year-on-year. Original output grew by 1.7 per cent from one year back in June.

Working day adjusted change in total industrial output (BCDE) from corresponding month previous year, %, TOL 2008



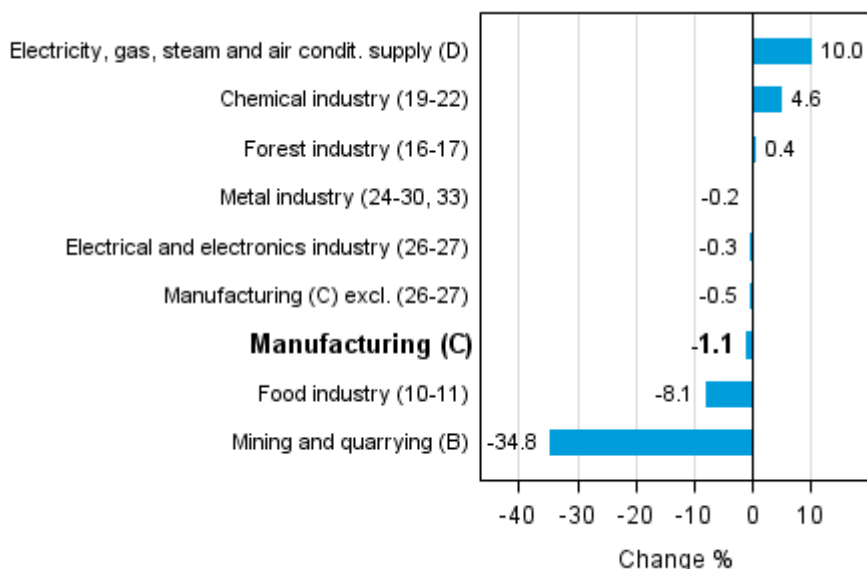
Seasonally adjusted output grew in June by 1.2 per cent compared with the previous month. In May, seasonally adjusted output fell by one per cent from April. In April, seasonally adjusted output increased by 0.1 per cent from the previous month.

Seasonally adjusted change in total industrial output (BCDE) from previous month, %, TOL 2008



Industrial output went up in a few main industries in June. Output rose most, by 10 per cent, in electricity production. In the chemical industry, output grew by 4.6 per cent. Output also grew slightly in the forest industry in June. Mining and quarrying declined most in June, by nearly 35 per cent. This was mostly due to the rainy June, which hampered the production of peat.

Working day adjusted change in industrial output by industry 6/2014-6/2015, %, TOL 2008



In June, capacity utilisation rate in manufacturing (C) was 80.4 per cent, or 0.2 percentage points higher than one year earlier. In the forest industry, capacity utilisation rate was 86 per cent in June, or 4.1 percentage points higher than in June 2014. In the metal industry, capacity utilisation rate was 82.4 per cent in June, which was 1.6 percentage points higher than one year earlier.

Revised data for June 2015 will be published at 9 am on 10 September 2015 in connection with the release of industrial output data for July 2015. The revision is influenced by the estimation used in the latest release, which concerns the periodic tax return data used for enterprises with fewer than 50 employees. Because of the method used, seasonally adjusted figures for previous months may change even if the original figures do not become revised. The seasonally adjusted figures will also be adjusted for working days.

Contents

Industrial output decreased by 1.1 per cent year-on-year in June5

Tables

Table 1. Volume index of industrial output, value added, original, working day adjusted, seasonally adjusted change percentage.....6

Figures

Appendix figures

Appendix figure 1. Working day adjusted change percentage of industrial output June 2014 /June 2015, TOL 2008.....7

Appendix figure 2. Seasonally adjusted change percentage of industrial output May 2015 /June 2015, TOL 2008...7

Appendix figure 3. Seasonally adjusted industrial output Finland, Germany, Sweden, France and United Kingdom (BCD) 2005 - 2015, 2010=100, TOL 2008.....8

Revisions in these statistics.....9

Industrial output decreased by 1.1 per cent year-on-year in June

According to Statistics Finland, output of total industries adjusted for working days was 1.1 per cent lower in June 2015 compared to June 2014. Seasonally adjusted output grew by 1.2 per cent in June from May.

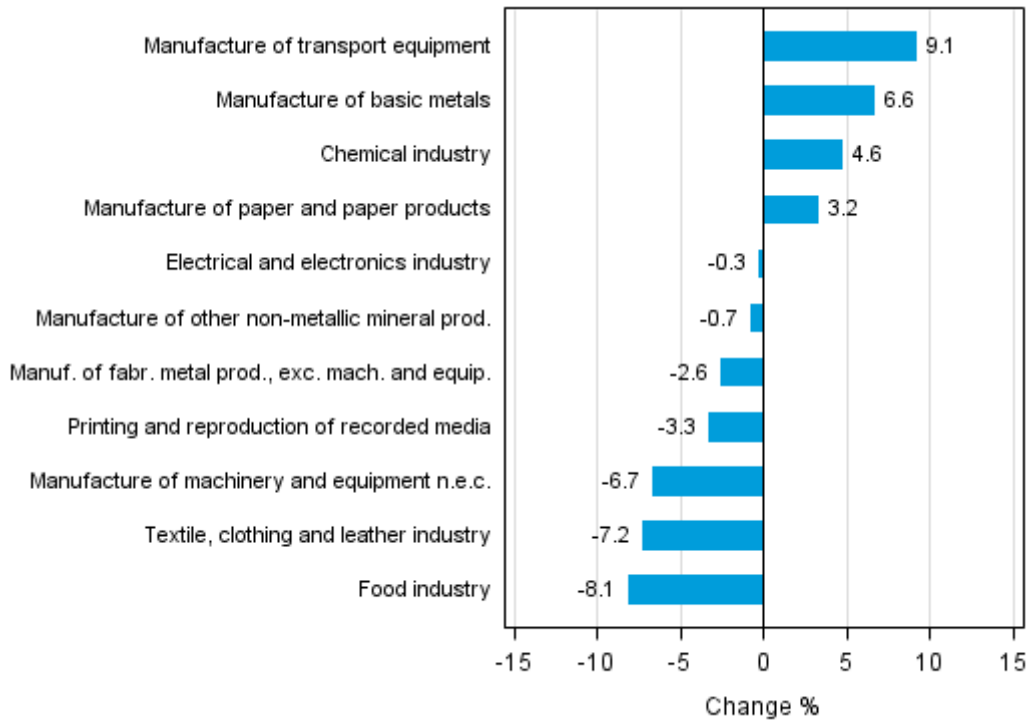
Adjusted for working days, industrial output (C) decreased by 1.1 per cent in June from one year back. Seasonally adjusted output grew by 1.1 per cent in June from May.

Table 1. Volume index of industrial output, value added, original, working day adjusted, seasonally adjusted change percentage

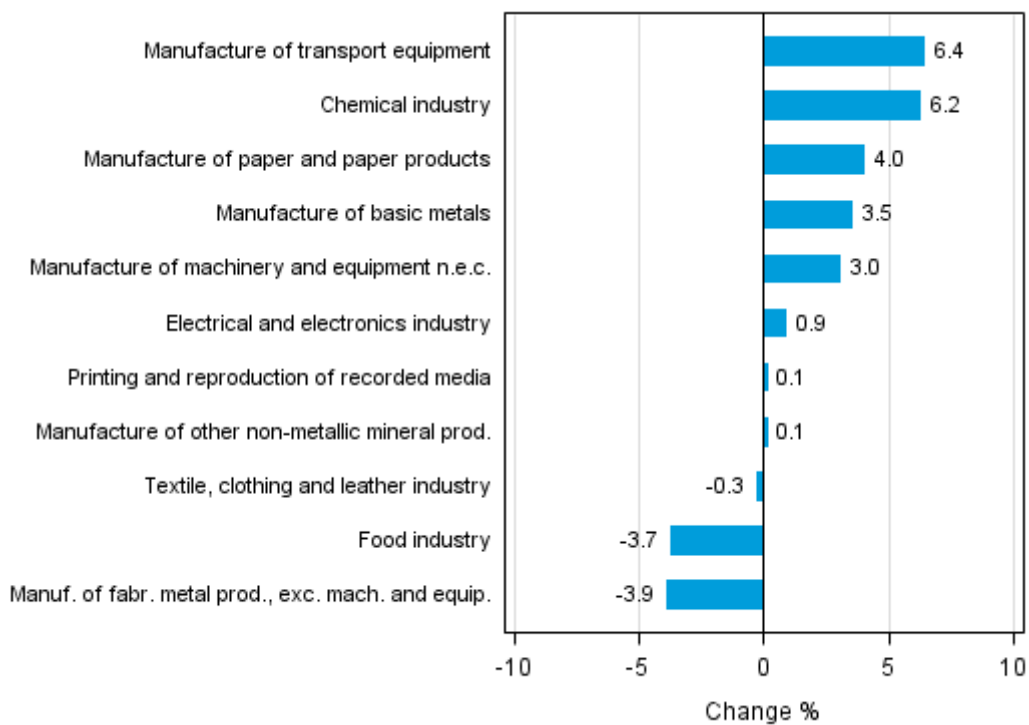
	Value added share	Original change percentage, 2015 JUN / 2014 JUN	Working day adj. change percentage, 2015 JUN / 2014 JUN	Seasonal adj. change percentage, 2015 JUN / 2015 MAY
Industry (Tol 2008)				
Total industries	100,0	1,7	-1,1	1,2
B Mining and quarrying	1,9	-34,8	-34,8	-6,8
C Manufacturing	85,0	1,9	-1,1	1,1
10 Manufacture of food products	7,7	-3,9	-7,3	-4,5
11 Manufacture of beverages	1,3	-8,4	-12,3	1,2
13 Manufacture of textiles	0,5	1,9	-0,2	-9,6
14 Manufacture of wearing apparel	0,4	-12,7	-15,9	-0,7
15 Manufacture of leather and related products	0,2	-6,9	-6,9	6,8
16 Manufacture of wood and of products of wood and cork, except furniture; manufacture of articles of straw and plaiting materials	3,6	-2,1	-6,0	0,0
17 Manufacture of paper and paper products	9,4	3,2	3,2	4,0
18 Printing and reproduction of recorded media	1,8	-0,5	-3,3	0,1
23 Manufacture of other non-metallic mineral products	3,3	2,9	-0,7	0,1
24 Manufacture of basic metals	5,6	8,3	6,6	3,5
25 Manufacture of fabricated metal products, except machinery and equipment	8,3	0,3	-2,6	-3,9
28 Manufacture of machinery and equipment n.e.c.	10,9	-4,3	-6,7	3,0
31 Manufacture of furniture	1,1	-3,7	-7,9	-3,3
32 Other manufacturing	0,9	-3,0	-3,0	-3,4
33 Repair and installation of machinery and equipment	3,9	16,9	14,5	0,1
D Electricity, gas, steam and air conditioning supply	10,6	10,0	10,0	8,0
E Water supply; sewerage, waste management and remediation activities	2,6	-1,3	-1,3	1,7
36 Water collection, treatment and supply	0,3	-4,5	-4,5	-2,3
Main industrial groupings:				
Raw materials and productive goods	42,2	0,7	-1,0	0,9
Investment goods	26,0	0,6	-2,1	1,5
Durable goods	1,4	17,0	11,0	0,3
Other consumer goods	15,0	4,9	1,1	-0,2
Special indices:				
10-11 Food industry	9,0	-4,7	-8,1	-3,7
13-15 Textile, clothing and leather industry	1,1	-4,2	-7,2	-0,3
16-17 Forest industry	13,0	1,6	0,4	3,3
19-22 Chemical industry	13,4	4,6	4,6	6,2
24-30 Metal industry	37,6	1,4	-1,8	1,4
26-27 Electrical and electronics industry	10,3	2,9	-0,3	0,9
25,28-30,33 Machinery and metal product industry	25,6	1,8	-1,1	0,1
29-30 Manufacture of transport equipment	2,6	9,1	9,1	6,4

Appendix figures

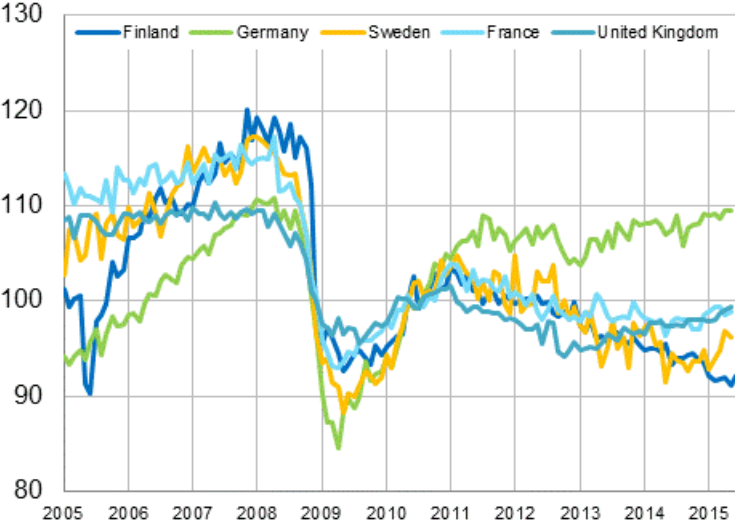
Appendix figure 1. Working day adjusted change percentage of industrial output June 2014 /June 2015, TOL 2008



Appendix figure 2. Seasonally adjusted change percentage of industrial output May 2015 /June 2015, TOL 2008



Appendix figure 3. Seasonally adjusted industrial output Finland, Germany, Sweden, France and United Kingdom (BCD) 2005 - 2015, 2010=100, TOL 2008



Revisions in these statistics

The data of the original series of industrial output have become revised according to the table below. For more information about data revisions, see Section 3 of the quality description (only in Finnish).

Revisions to data on annual changes in main industries

Main industries and Statistical reference month		Annual change (%)		Revision (%-point)
		1st release (%)	Latest release (10.08.2015) (%)	
BCDE Total industry	2015 / 01	-7,2	-6,4	0,8
	2015 / 02	-5,1	-4,2	0,9
	2015 / 03	-2,1	-1,3	0,8
	2015 / 04	-4,2	-3,2	1,0
	2015 / 05	-7,2	-7,2	0,0
C Manufacturing	2015 / 01	-6,4	-5,6	0,8
	2015 / 02	-4,8	-3,9	0,9
	2015 / 03	-2,3	-1,5	0,8
	2015 / 04	-4,9	-3,7	1,2
	2015 / 05	-7,5	-7,5	0,0
D Electricity, gas, steam and air conditioning supply	2015 / 01	-10,5	-10,5	0,0
	2015 / 02	-5,3	-5,3	0,0
	2015 / 03	3,3	3,3	0,0
	2015 / 04	4,1	4,1	0,0
	2015 / 05	-0,5	-0,5	0,0
10-11 Food industry	2015 / 01	-9,4	-8,2	1,2
	2015 / 02	-4,6	-3,5	1,1
	2015 / 03	-0,1	1,5	1,6
	2015 / 04	-5,4	-7,1	-1,7
	2015 / 05	-4,8	-4,9	-0,1
16-17 Forest industry	2015 / 01	-1,9	-2,8	-0,9
	2015 / 02	-5,3	-3,3	2,0
	2015 / 03	-2,8	-2,8	0,0
	2015 / 04	-1,5	-1,3	0,2
	2015 / 05	-5,4	-5,5	-0,1
19-22 Chemical industry	2015 / 01	-8,5	-5,0	3,5
	2015 / 02	-5,3	-2,9	2,4
	2015 / 03	-1,0	7,2	8,2
	2015 / 04	-9,7	0,3	10,0
	2015 / 05	-14,6	-12,0	2,6
24-30, 33 Metal industry	2015 / 01	-5,1	-4,7	0,4
	2015 / 02	-4,7	-4,1	0,6
	2015 / 03	-3,8	-5,2	-1,4
	2015 / 04	-4,3	-4,1	0,2
	2015 / 05	-7,6	-7,8	-0,2
26-27 Electrical and electronics industry	2015 / 01	3,6	2,1	-1,5
	2015 / 02	-5,6	-4,3	1,3
	2015 / 03	-0,5	0,4	0,9
	2015 / 04	1,4	1,4	0,0
	2015 / 05	-8,7	-10,3	-1,6

Main industries and Statistical reference month		Annual change (%)		Revision (%-point)
		1st release (%)	Latest release (10.08.2015) (%)	
Manufacturing excl. electrical and electronics industry	2015 / 01	-7,5	-6,6	0,9
	2015 / 02	-4,7	-3,8	0,9
	2015 / 03	-2,6	-1,8	0,8
	2015 / 04	-5,7	-4,4	1,3
	2015 / 05	-7,4	-7,1	0,3

Inquiries

Kari Rautio 029 551 2479

Heidi Myllylä 029 551 3792

Director in charge:

Hannele Orjala

volyyimi.indeksi@stat.fi

www.stat.fi

Source: Volume Index of Industrial Output 2015, June. Statistics Finland