

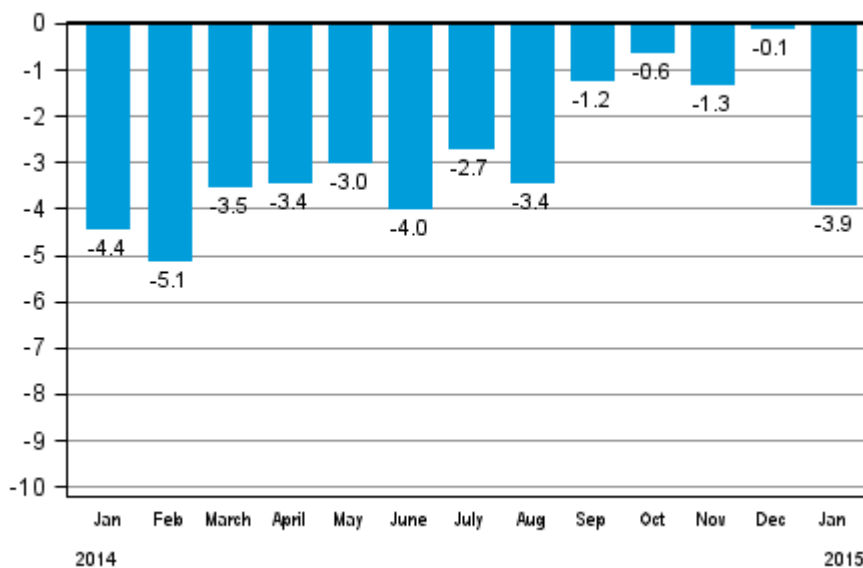
Volume index of industrial output

2015, January

Industrial output decreased by 3.9 per cent year-on-year in January

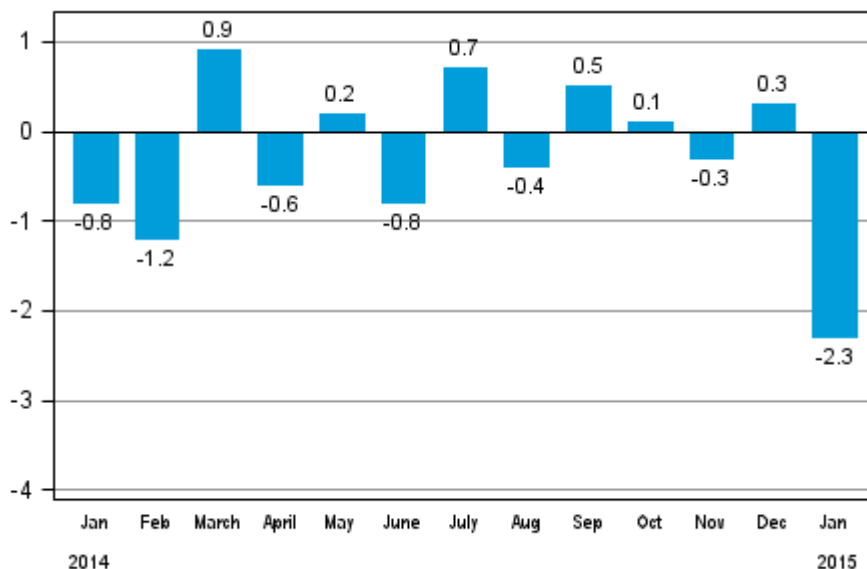
According to Statistics Finland, output of total industries adjusted for working days was 3.9 per cent lower in January 2015 than in January 2014. Industrial output has declined continuously for a couple of years.

Working day adjusted change in total industrial output (BCDE) from corresponding month previous year, %, TOL 2008



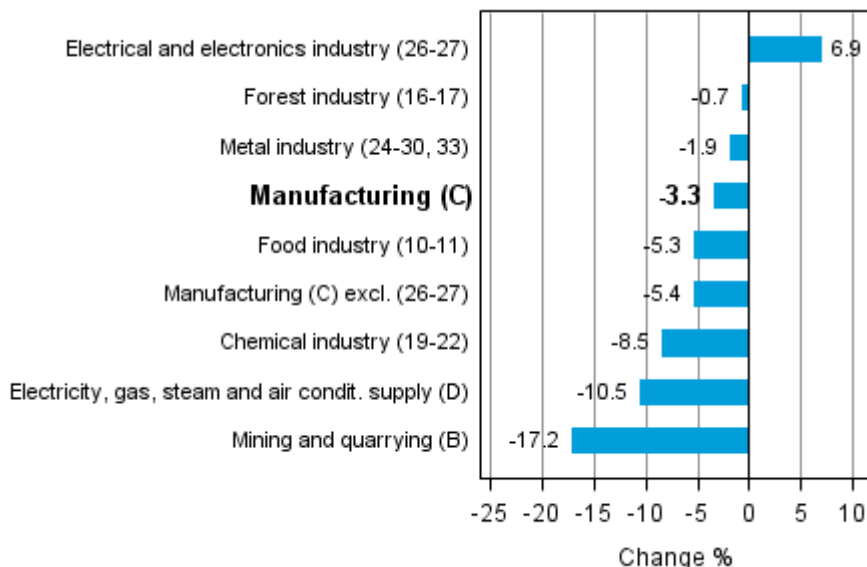
Seasonally adjusted output fell in January by 2.3 per cent compared with the previous month. In December, seasonally adjusted output grew by 0.3 per cent. In November, seasonally adjusted output decreased by 0.3 per cent month-on-month.

Seasonally adjusted change in total industrial output (BCDE) from previous month, %, TOL 2008



Industrial output diminished in almost all main industries in January. Output declined by most, or by good 17 per cent, in mining and quarrying. In the chemical industry, output diminished by 8.5 per cent. Output in the metal industry diminished by 1.9 per cent in January. Among main industries, output increased in the electrical and electronics industry by nearly seven per cent.

Working day adjusted change in industrial output by industry 1/2014-1/2015, %, TOL 2008



In January, capacity utilisation rate in manufacturing (C) was 79.3 per cent, or 1.3 percentage points higher than one year earlier. In the forest industry, capacity utilisation rate was 84.2 per cent in January, or 1.1 percentage points higher than in January 2014. In the metal industry, capacity utilisation rate was 81.7 per cent in January, which was 3.7 percentage points higher than one year earlier.

New seasonal adjustment software adopted

Starting from the January 2015 data, a new seasonal adjustment software J-Demetra+ will be adopted in the Volume Index of Industrial Output. The software change does not affect the used seasonal adjustment method. The change does not influence the interpretation or use of the time series either. More about the implementation of the software [changes in these statistics](#).

Revised data for January 2015 will be published at 9 am on 10 April 2015 in connection with the release of industrial output data for February 2015. The revision is influenced by the estimation used in the latest release, which concerns the periodic tax return data used for enterprises with fewer than 50 employees. Because of the method used, seasonally adjusted figures for previous months may change even if the original figures do not become revised. The seasonally adjusted figures will also be adjusted for working days.

Contents

Industrial output decreased by 3.9 per cent year-on-year in January	5
---	---

Tables

Table 1. Volume index of industrial output, value added, original, working day adjusted, seasonally adjusted change percentage.....	6
---	---

Figures

Appendix figures

Appendix figure 1. Working day adjusted change percentage of industrial output January 2014 /January 2015, TOL 2008.....	7
--	---

Appendix figure 2. Seasonally adjusted change percentage of industrial output December 2014 /January 2015, TOL 2008.....	7
--	---

Appendix figure 3. Seasonally adjusted industrial output Finland, Germany, Sweden, France and United Kingdom (BCD) 2000 - 2015, 2010=100, TOL 2008.....	8
---	---

Revisions in these statistics.....	9
------------------------------------	---

Industrial output decreased by 3.9 per cent year-on-year in January

According to Statistics Finland, output of total industries adjusted for working days was 3.9 per cent lower in January 2015 than in January 2014. Seasonally adjusted output fell in January by 2.3 per cent compared with December.

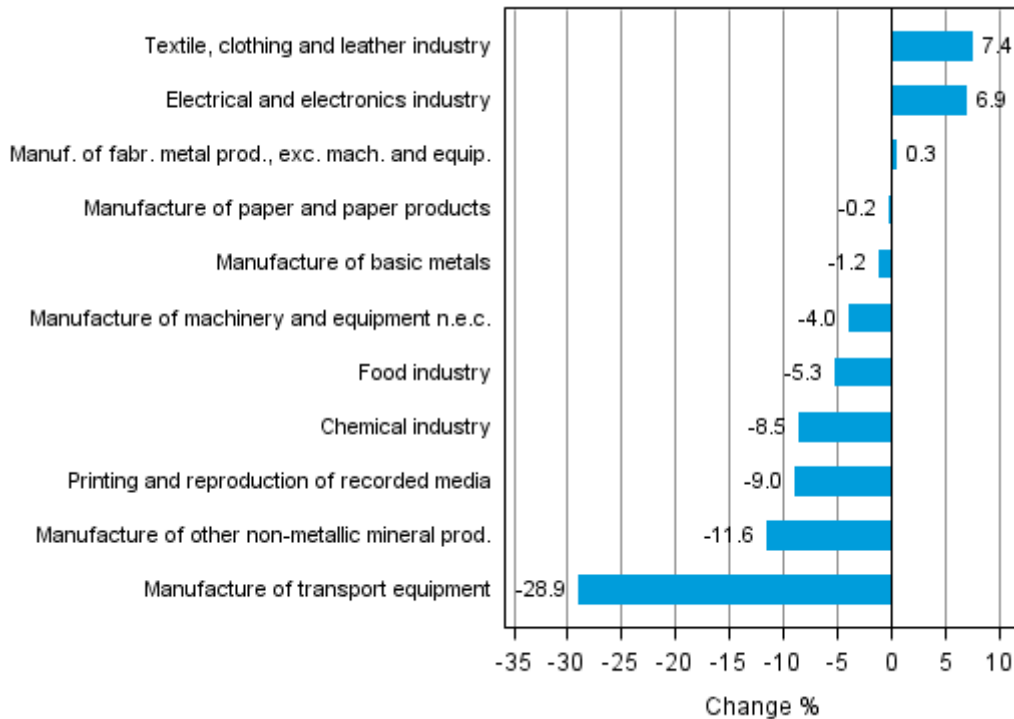
Adjusted for working days, industrial output (C) went down by 3.3 per cent in January from one year back. Seasonally adjusted output fell in January by 2.3 per cent compared with December.

Table 1. Volume index of industrial output, value added, original, working day adjusted, seasonally adjusted change percentage

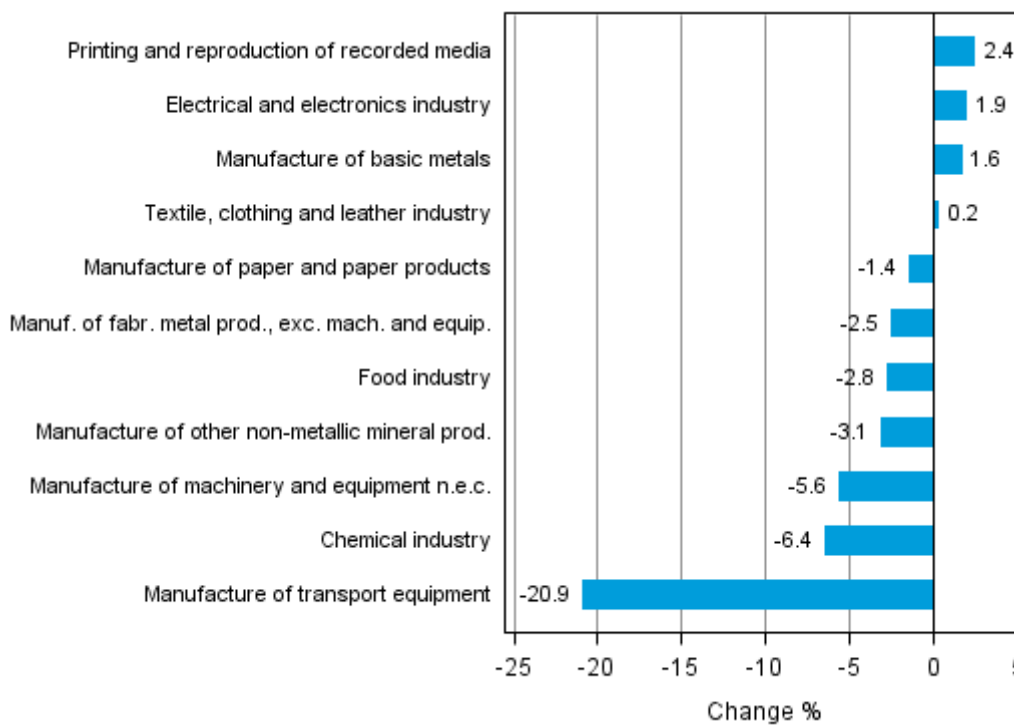
	Value added share	Original change percentage, 2015 JAN / 2014 JAN	Working day adj. change percentage, 2015 JAN / 2014 JAN	Seasonal adj. change percentage, 2015 JAN / 2014 DEC
Industry (Tot 2008)				
Total industries	100,0	-7,2	-3,9	-2,3
B Mining and quarrying	2,0	-17,2	-17,2	-21,6
C Manufacturing	83,9	-6,4	-3,3	-2,3
10 Manufacture of food products	7,1	-9,8	-6,3	-2,0
11 Manufacture of beverages	1,3	-6,8	-0,4	-11,1
13 Manufacture of textiles	0,6	24,0	29,7	1,5
14 Manufacture of wearing apparel	0,4	-19,0	-15,9	1,2
15 Manufacture of leather and related products	0,3	-17,0	-17,0	-10,3
16 Manufacture of wood and of products of wood and cork, except furniture; manufacture of articles of straw and plaiting materials	3,7	-7,1	-3,4	-1,7
17 Manufacture of paper and paper products	9,5	-0,2	-0,2	-1,4
18 Printing and reproduction of recorded media	1,9	-11,1	-9,0	2,4
23 Manufacture of other non-metallic mineral products	3,7	-15,6	-11,6	-3,1
24 Manufacture of basic metals	3,4	-2,0	-1,2	1,6
25 Manufacture of fabricated metal products, except machinery and equipment	8,2	-3,2	0,3	-2,5
28 Manufacture of machinery and equipment n.e.c.	13,3	-6,8	-4,0	-5,6
31 Manufacture of furniture	1,2	-22,0	-17,3	-4,4
32 Other manufacturing	0,9	-10,5	-10,5	-4,3
33 Repair and installation of machinery and equipment	3,3	-6,2	-4,2	1,7
D Electricity, gas, steam and air conditioning supply	10,7	-10,5	-10,5	-0,6
E Water supply; sewerage, waste management and remediation activities	3,4	-2,6	-2,6	-0,7
36 Water collection, treatment and supply	1,8	-2,5	-2,5	-0,3
Main industrial groupings:				
Raw materials and productive goods	40,4	-4,7	-1,5	-3,6
Investment goods	26,3	-7,7	-5,1	-2,4
Durable goods	1,6	-12,9	-7,9	-3,5
Other consumer goods	14,8	-10,4	-6,1	-2,6
Special indices:				
10-11 Food industry	8,4	-9,4	-5,3	-2,8
13-15 Textile, clothing and leather industry	1,3	1,4	7,4	0,2
16-17 Forest industry	13,3	-1,9	-0,7	-1,3
19-22 Chemical industry	13,7	-8,5	-8,5	-6,4
24-30 Metal industry	36,2	-5,0	-1,5	-1,8
26-27 Electrical and electronics industry	8,5	3,6	6,9	1,9
25,28-30,33 Machinery and metal product industry	27,6	-8,5	-5,9	-5,5
29-30 Manufacture of transport equipment	2,8	-28,9	-28,9	-20,9

Appendix figures

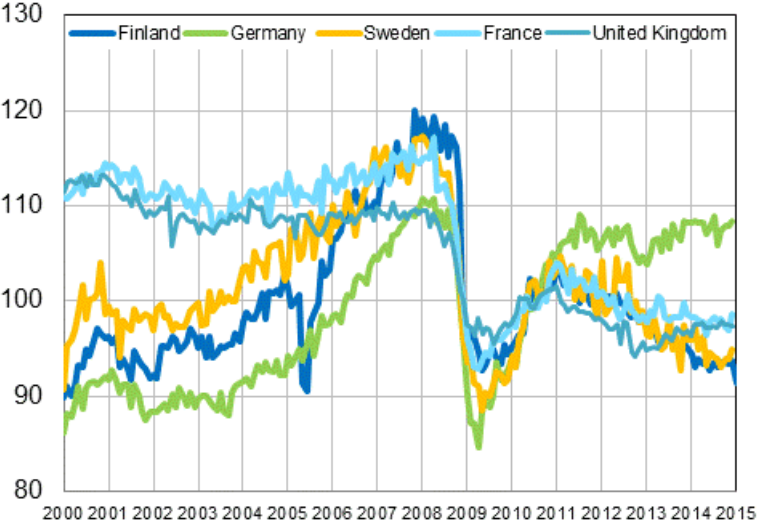
Appendix figure 1. Working day adjusted change percentage of industrial output January 2014 /January 2015, TOL 2008



Appendix figure 2. Seasonally adjusted change percentage of industrial output December 2014 /January 2015, TOL 2008



Appendix figure 3. Seasonally adjusted industrial output Finland, Germany, Sweden, France and United Kingdom (BCD) 2000 - 2015, 2010=100, TOL 2008



Revisions in these statistics

The data of the original series of industrial output have become revised according to the table below. For more information about data revisions, see Section 3 of the quality description (only in Finnish).

Revisions to data on annual changes in main industries

Main industries and Statistical reference month		Annual change (%)		Revision (%-point)
		1st release (%)	Latest release (10.03.2015) (%)	
BCDE Total industry	2014 / 08	-5,6	-5,9	-0,3
	2014 / 09	1,3	1,7	0,4
	2014 / 10	-1,0	-1,3	-0,3
	2014 / 11	-3,0	-3,4	-0,4
	2014 / 12	3,6	4,8	1,2
C Manufacturing	2014 / 08	-5,7	-5,9	-0,2
	2014 / 09	1,9	2,4	0,5
	2014 / 10	-1,0	-1,4	-0,4
	2014 / 11	-2,9	-3,4	-0,5
	2014 / 12	4,4	5,7	1,3
D Electricity, gas, steam and air conditioning supply	2014 / 08	-2,1	-2,0	0,1
	2014 / 09	0,5	0,5	0,0
	2014 / 10	1,0	1,0	0,0
	2014 / 11	-2,6	-2,6	0,0
	2014 / 12	-1,4	-1,4	0,0
10-11 Food industry	2014 / 08	-4,2	-4,5	-0,3
	2014 / 09	4,6	2,7	-1,9
	2014 / 10	-4,5	-4,4	0,1
	2014 / 11	-6,8	-7,2	-0,4
	2014 / 12	1,9	2,3	0,4
16-17 Forest industry	2014 / 08	-4,9	-4,6	0,3
	2014 / 09	-0,7	-0,4	0,3
	2014 / 10	-4,6	-4,0	0,6
	2014 / 11	-2,0	-2,3	-0,3
	2014 / 12	0,8	1,4	0,6
19-22 Chemical industry	2014 / 08	-7,1	-7,6	-0,5
	2014 / 09	-5,5	-4,5	1,0
	2014 / 10	-2,2	-3,1	-0,9
	2014 / 11	8,3	7,4	-0,9
	2014 / 12	9,8	10,5	0,7
24-30, 33 Metal industry	2014 / 08	-6,1	-6,4	-0,3
	2014 / 09	6,9	7,8	0,9
	2014 / 10	3,1	2,5	-0,6
	2014 / 11	-3,8	-4,5	-0,7
	2014 / 12	5,7	7,4	1,7
26-27 Electrical and electronics industry	2014 / 08	-2,0	-0,8	1,2
	2014 / 09	2,4	3,9	1,5
	2014 / 10	-3,3	-3,8	-0,5
	2014 / 11	-1,7	-2,1	-0,4
	2014 / 12	6,5	5,4	-1,1

Main industries and Statistical reference month		Annual change (%)		Revision (%-point)
		1st release (%)	Latest release (10.03.2015) (%)	
Manufacturing excl. electrical and electronics industry	2014 / 08	-6,1	-6,5	-0,4
	2014 / 09	1,9	2,3	0,4
	2014 / 10	-0,8	-1,1	-0,3
	2014 / 11	-3,1	-3,5	-0,4
	2014 / 12	4,1	5,8	1,7

Inquiries

Kari Rautio 029 551 2479

Heidi Myllylä 029 551 3792

Director in charge:

Hannele Orjala

volyyimi.indeksi@stat.fi

www.stat.fi

Source: Volume Index of Industrial Output 2015, January. Statistics Finland