

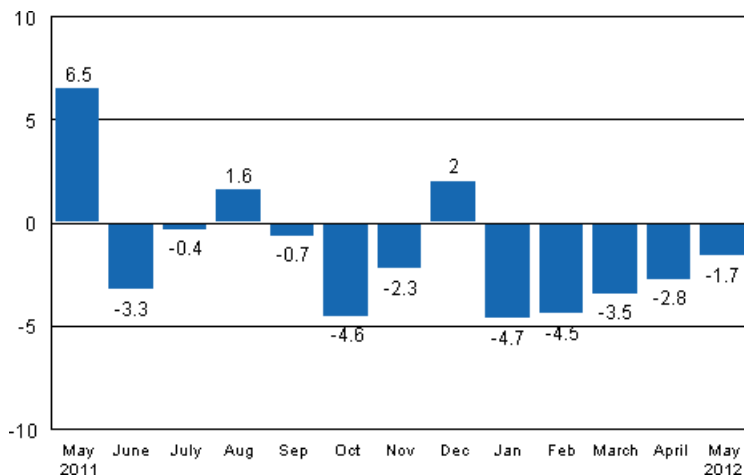
# Volume index of industrial output

2012, May

## Industrial output fell by 1.7 per cent year-on-year in May

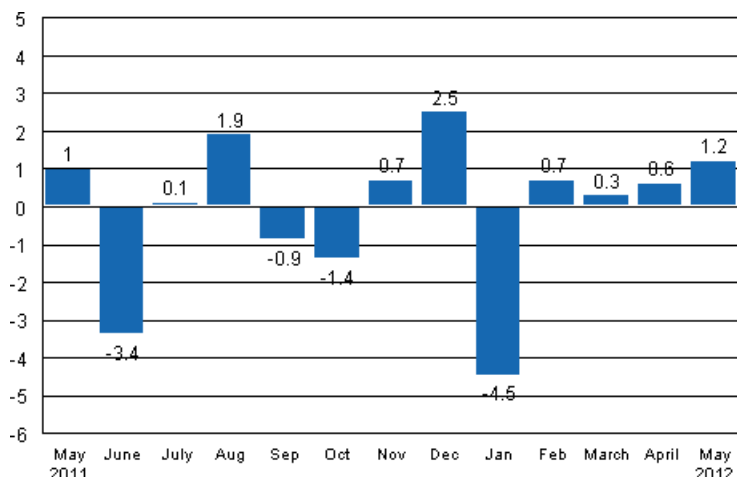
According to Statistics Finland, output of total industries adjusted for working days was 1.7 per cent lower in May 2012 than twelve months earlier. Over the January to May period, industrial output decreased by 3.3 per cent year-on-year.

**Working day adjusted change in industrial output (BCDE) from corresponding month previous year, %, TOL 2008**



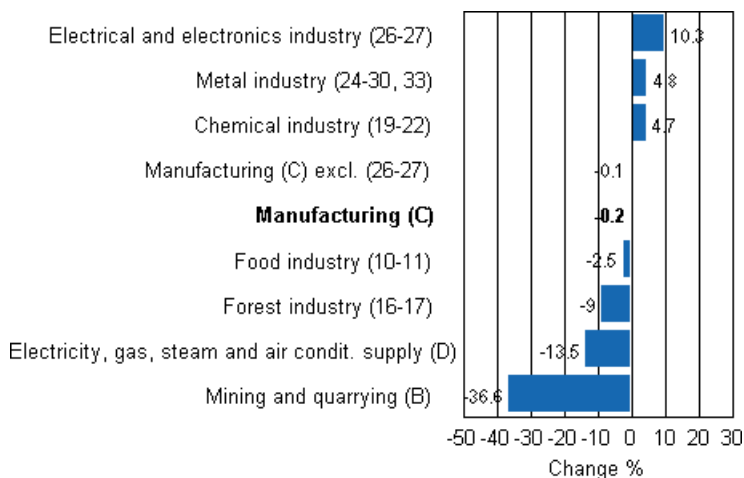
In May, seasonally adjusted output went up by 1.2 per cent from April. In April, output grew by 0.6 per cent from the previous month. In March, seasonally adjusted output was 0.3 per cent higher than in February.

**Seasonally adjusted change in industrial output (BCDE) from previous month, %, TOL 2008**



Among the examined main industries output decreased by most, by nearly 37 per cent, in mining and quarrying. The production of electricity decreased by good 13 per cent year-on-year. In the forest industry, output was 9 per cent down on twelve months back. In the metal industry, output was 4.8 per cent higher than in May 2011. Among the main industries, output grew by most in the electrical and electronics industry where it went up by good 10 per cent.

**Working day adjusted change in industrial output by industry 5/2011-5/2012, %, TOL 2008**



Capacity utilisation rate in manufacturing was 84.8 per cent in May, or almost on level with twelve months earlier. In the forest industry, capacity utilisation rate was 88.8 per cent in May, or 1.5 percentage points lower than in May 2011. Capacity utilisation rate in the metal industry was 86.9 per cent in May, which was 0.6 percentage points higher than twelve months earlier. In mining and quarrying capacity utilisation rate fell by over 20 percentage points year-on-year to 56 per cent.

Revised data for May 2012 will be published at 9 am on 10 August 2012 in connection with the release of industrial output data for June 2012. The revision is influenced by the estimation used in the latest release which concerns the periodic tax return data used for enterprises with fewer than 50 employees. Because of the method used, seasonally adjusted figures for previous months may change even if the original figures do not become revised. The seasonally adjusted figures will also be adjusted for working days.

# Contents

Industrial output fell by 1.7 per cent in May .....	4
---	---

## Tables

Table 1. Volume index of industrial output, value added, original, working day adjusted, seasonally adjusted change percentage.....	5
---	---

## Figures

### Appendix figures

Appendix figure 1. Working day adjusted change percentage of industrial output May 2011 /May 2012, TOL 2008.....	6
--	---

Appendix figure 2. Seasonally adjusted change percentage of industrial output April 2012 /May 2012, TOL 2008.....	6
---	---

Appendix figure 3. Trend of industrial output Finland, Germany, Sweden, France and United Kingdom (BCD) 2000 - 2012, 2005=100, TOL 2008.....	7
--	---

Revisions in these statistics.....	8
------------------------------------	---

## ***Industrial output fell by 1.7 per cent in May***

According to Statistics Finland, output of total industries adjusted for working days was 1.7 per cent lower in May 2012 than twelve months earlier. Seasonally adjusted output grew by 1.2 per cent in May relative to April.

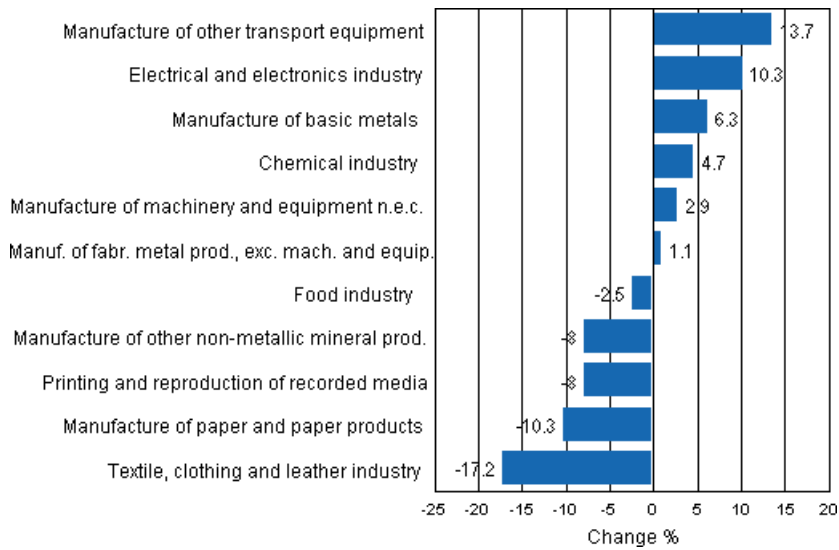
Adjusted for working days, industrial output (C) fell by 0.2 per cent in May from twelve months back. Seasonally adjusted output went up by 0.7 per cent from the month before.

**Table 1. Volume index of industrial output, value added, original, working day adjusted, seasonally adjusted change percentage**

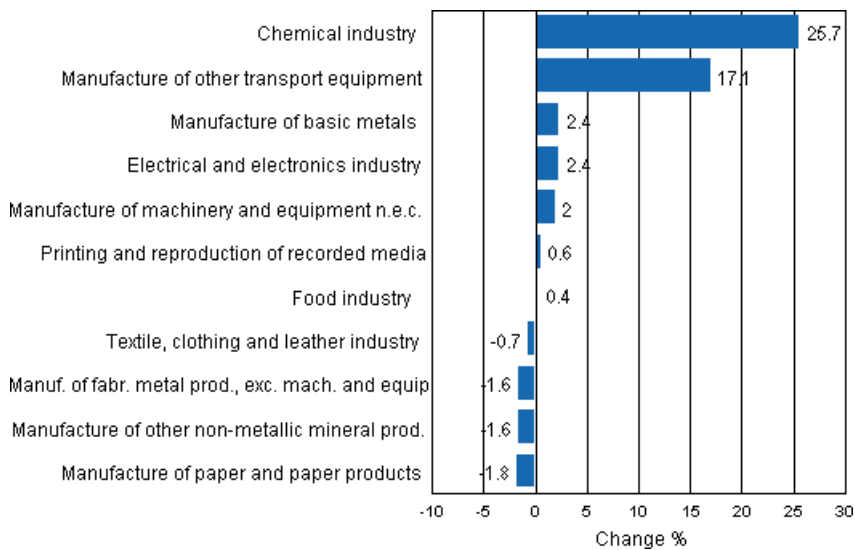
	Value added share	Original change percentage, 2012 MAY / 2011 MAY	Working day adj. change percentage, 2012 MAY / 2011 MAY	Seasonal adj. change percentage, 2012 MAY / 2012 APR
Industry (Tol 2008)				
Total industries	100,0	-2,4	-1,7	1,2
B Mining and quarrying	1,7	-39,6	-36,6	-8,2
C Manufacturing	83,7	-0,3	-0,2	0,7
10 Manufacture of food products	6,5	-3,5	-3,4	-0,3
11 Manufacture of beverages	1,3	-0,7	-0,7	0,2
13 Manufacture of textiles	0,6	-8,7	-5,3	-0,5
14 Manufacture of wearing apparel	0,4	-27,1	-26,2	1,4
15 Manufacture of leather and related products	0,3	-35,9	-38,1	-8,3
16 Manufacture of wood and of products of wood and cork, except furniture; manufacture of articles of straw and plaiting materials	3,9	-7,4	-7,5	-4,6
17 Manufacture of paper and paper products	9,8	-10,4	-10,3	-1,8
18 Printing and reproduction of recorded media	1,8	-10,0	-8,0	0,6
23 Manufacture of other non-metallic mineral products	2,9	-10,2	-8,0	-1,6
24 Manufacture of basic metals	4,3	2,8	6,3	2,4
25 Manufacture of fabricated metal products, except machinery and equipment	7,2	-0,8	1,1	-1,6
28 Manufacture of machinery and equipment n.e.c.	11,2	0,6	2,9	2,0
29 Manufacture of motor vehicles, trailers and semi-trailers	1,1	9,9	13,2	24,9
30 Manufacture of other transport equipment	0,9	8,4	8,4	3,8
31 Manufacture of furniture	1,1	-4,8	-5,2	1,1
32 Other manufacturing	0,8	-3,1	-0,3	1,4
33 Repair and installation of machinery and equipment	3,3	7,2	8,3	6,2
D Electricity, gas, steam and air conditioning supply	12,0	-13,5	-13,5	2,3
E Water supply; sewerage, waste management and remediation activities	2,7	-0,4	0,1	1,2
36 Water collection, treatment and supply	0,6	1,0	1,0	1,8
Main industrial groupings:				
Raw materials and productive goods	39,0	-8,2	-7,5	-0,8
Investment goods	28,8	7,0	9,7	3,3
Durable goods	1,4	-0,9	-1,7	2,4
Other consumer goods	13,4	5,4	5,5	23,8
Special indices:				
10-11 Food industry	7,8	-3,0	-2,5	0,4
13-15 Textile, clothing and leather industry	1,2	-20,6	-17,2	-0,7
16-17 Forest industry	13,6	-9,4	-9,0	-2,0
19-22 Chemical industry	13,1	5,4	4,7	25,7
24-30 Metal industry	38,0	3,8	4,9	1,9
26-27 Electrical and electronics industry	13,4	9,2	10,3	2,4
25,28-30,33 Machinery and metal product industry	23,7	2,0	1,9	1,4
29-30 Manufacture of transport equipment	2,0	9,2	13,7	17,1

## Appendix figures

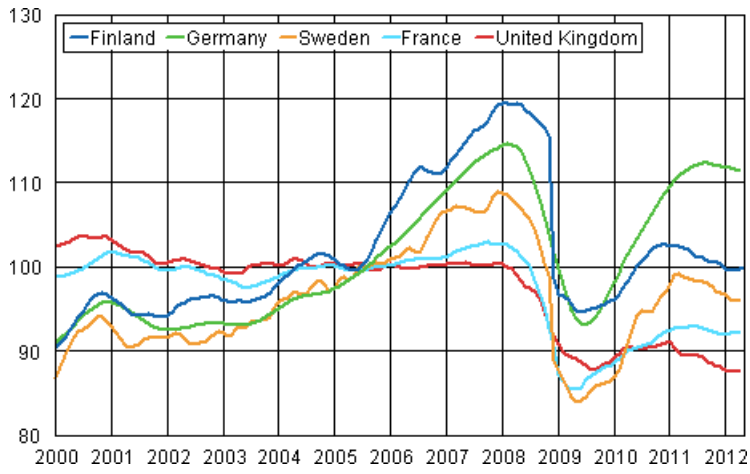
**Appendix figure 1. Working day adjusted change percentage of industrial output May 2011 /May 2012, TOL 2008**



**Appendix figure 2. Seasonally adjusted change percentage of industrial output April 2012 /May 2012, TOL 2008**



**Appendix figure 3. Trend of industrial output Finland, Germany, Sweden, France and United Kingdom (BCD) 2000 - 2012, 2005=100, TOL 2008**



## Revisions in these statistics

The data of the statistics have become revised according to the table below. For more information about data revisions, see Section 3 of the quality description (only in Finnish).

### Revisions to data on annual changes in main industries

Industry		Statistical reference month				
		2011 / 12	2012 / 01	2012 / 02	2012 / 03	2012 / 04
BCDE Total industry	1st release (%)	-3,5	-4,8	-3,2	-7,0	-4,1
	Latest release (10.7.2012) (%)	-3,3	-4,1	-5,1	-4,7	-3,8
	Revision (%-point)	0,2	0,8	-1,9	2,3	0,3
C Manufacturing	1st release (%)	0,3	-2,1	-2,0	-4,7	-2,3
	Latest release (10.7.2012) (%)	0,5	-1,1	-4,3	-2,0	-1,9
	Revision (%-point)	0,2	0,9	-2,3	2,7	0,3
10-11 Food industry	1st release (%)	0,5	0,6	0,7	-0,7	-1,8
	Latest release (10.7.2012) (%)	0,6	0,9	0,3	-1,9	-2,0
	Revision (%-point)	0,1	0,3	-0,4	-1,2	-0,1
16-17 Forest industry	1st release (%)	-10,7	-15,8	-5,7	-7,7	-6,1
	Latest release (10.7.2012) (%)	-10,8	-10,6	-4,3	-7,3	-7,5
	Revision (%-point)	-0,1	5,2	1,5	0,4	-1,5
19-22 Chemical industry	1st release (%)	-4,0	1,4	5,3	-7,5	2,1
	Latest release (10.7.2012) (%)	-4,0	6,2	-0,4	11,4	0,7
	Revision (%-point)	0,0	4,8	-5,6	18,8	-1,4
24-30, 33 Metal industry	1st release (%)	5,2	1,8	-3,4	-2,5	-1,0
	Latest release (10.7.2012) (%)	5,7	-0,4	-7,0	-2,6	0,7
	Revision (%-point)	0,5	-2,2	-3,7	-0,1	1,7
26-27 Electrical and electronics industry	1st release (%)	-1,5	8,6	4,1	-14,1	-0,7
	Latest release (10.7.2012) (%)	-1,5	0,5	-8,3	-10,6	3,3
	Revision (%-point)	0,0	-8,0	-12,4	3,5	4,0
Manufacturing excl. electrical and electronics industry	1st release (%)	0,7	-4,0	-3,2	-2,8	-2,5
	Latest release (10.7.2012) (%)	1,0	-1,4	-3,6	-0,3	-2,8
	Revision (%-point)	0,3	2,6	-0,4	2,6	-0,3
D Electricity, gas, steam and air conditioning supply	1st release (%)	-26,3	-18,2	-8,3	-19,9	-14,3
	Latest release (10.7.2012) (%)	-26,3	-18,2	-8,3	-19,9	-14,3
	Revision (%-point)	0,0	0,0	0,0	0,0	0,0



---

Suomen virallinen tilasto  
Finlands officiella statistik  
Official Statistics of Finland

Industry 2012

### Inquiries

Salla Simola                   09 1734 3308  
Eetu Toivanen                09 1734 3331  
Kari Rautio                    09 1734 2479

Director in charge:

Hannele Orjala  
volyymi.indeksi@stat.fi  
www.stat.fi

Source: Volume Index of Industrial Output 2012, May. Statistics Finland