

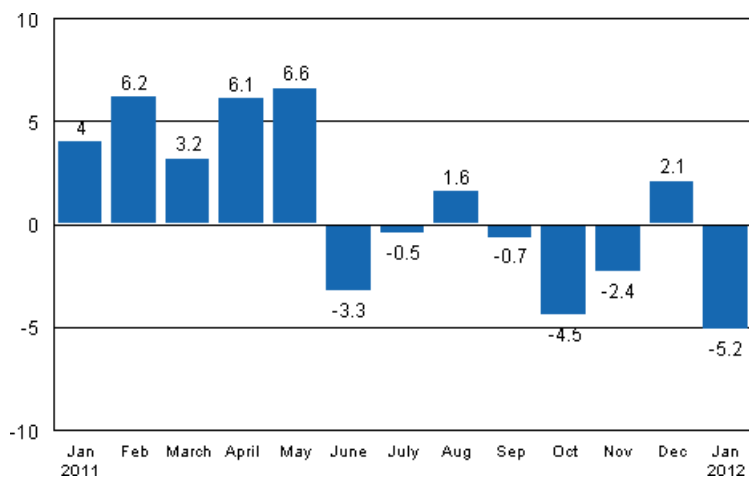
# Volume index of industrial output

2012, January

## Industrial output went down by 5.2 per cent year-on-year in January

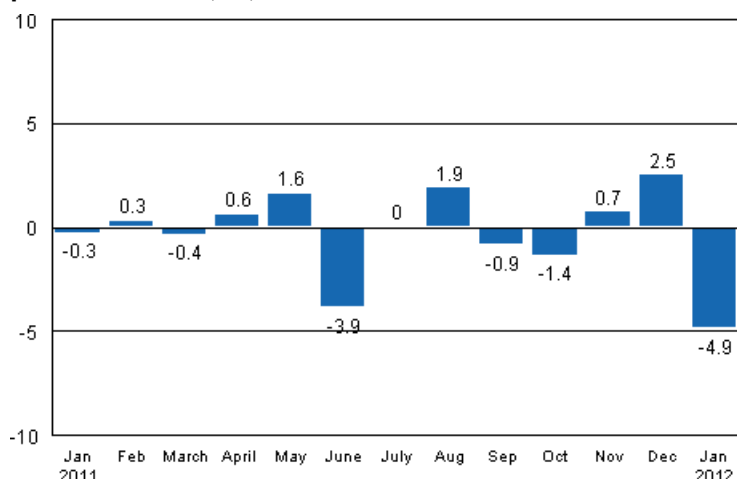
According to Statistics Finland, output of total industries adjusted for working days was 5.2 per cent lower in January 2012 than twelve months earlier.

**Working day adjusted change in industrial output (BCDE) from corresponding month previous year, %, TOL 2008**



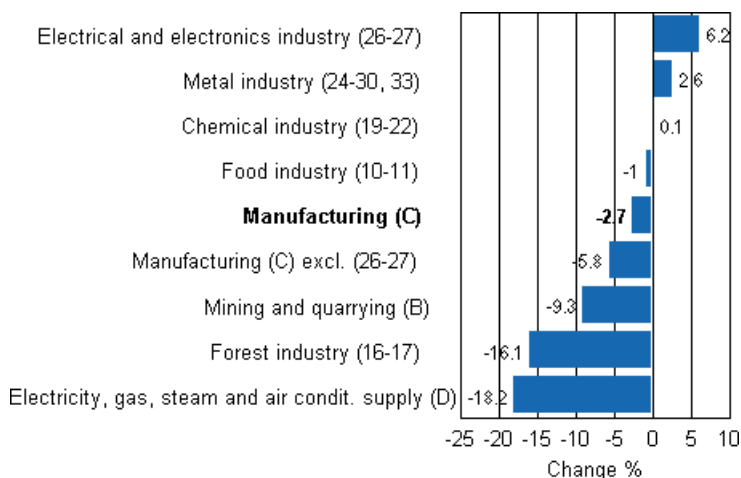
Seasonally adjusted output fell in January by 4.9 per cent compared with the previous month. In December, output went up by 2.5 per cent from the month before. In November, seasonally adjusted output was 0.7 per cent higher than in October.

**Seasonally adjusted change in industrial output (BCDE) from previous month, %, TOL 2008**



Industrial output diminished in several main industries in January. Output declined most, by 18.2 per cent, in electricity production. In the forest industry, output went down by 16.1 per cent from one year ago. Output in the food industry was one per cent down on January 2011. Output increased most in the electrical and electronics industry, or by 6.2 per cent.

**Working day adjusted change in industrial output by industry 1/2011-1/2012, %, TOL 2008**



Capacity utilisation rate in manufacturing was 78.8 per cent in January, or 1.7 percentage points lower than one year earlier. In the forest industry, capacity utilisation rate was 79.2 per cent in January, or seven percentage points lower than in January 2011. Capacity utilisation rate in the metal industry was 79.4 per cent in January, which is 1.7 percentage points lower than one year previously.

Revised data for January 2012 will be published at 9 am on 10 April 2012 in connection with the release of industrial output data for February 2012. The revision was caused by the estimation used in the latest release concerning industry 26 to 27 and the periodic tax return data used for enterprises with fewer than 50 employees. Because of the method used, seasonally adjusted figures for previous months may change even if the original figures do not become revised. The seasonally adjusted figures will also be adjusted for working days.

# Contents

Industrial output went down by 5.2 per cent in January.....	4
---	---

## Tables

Table 1. Volume index of industrial output, value added, original, working day adjusted, seasonally adjusted change percentage.....	5
---	---

## Figures

### Appendix figures

Appendix figure 1. Working day adjusted change percentage of industrial output January 2011 /January 2012, TOL 2008.....	6
--	---

Appendix figure 2. Seasonally adjusted change percentage of industrial output December 2011 /January 2012, TOL 2008.....	6
--	---

Appendix figure 3. Trend of industrial output Finland, Germany, Sweden, France and United Kingdom (BCD) 2000 - 2012, 2005=100, TOL 2008.....	7
--	---

## ***Industrial output went down by 5.2 per cent in January***

According to Statistics Finland, output of total industries (BCDE) adjusted for working days was 5.2 per cent lower in January 2012 than one year previously. Seasonally adjusted output fell in January by 4.9 per cent compared with the previous month.

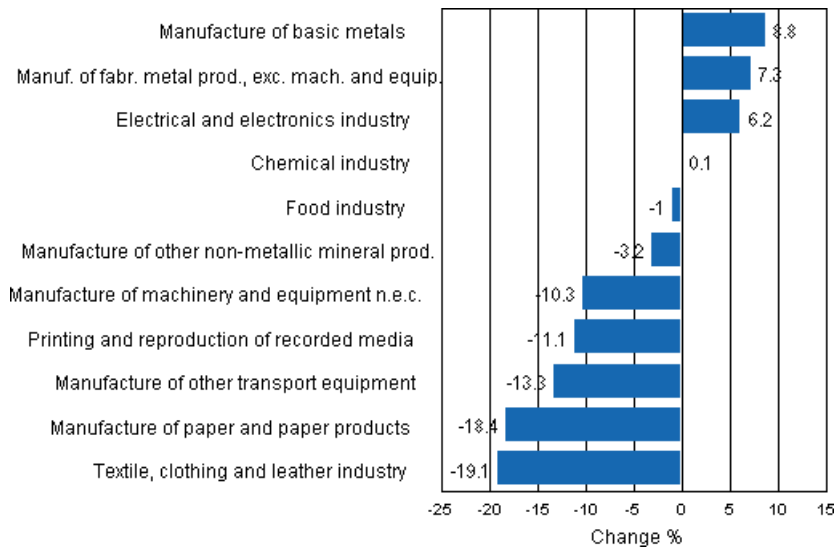
Adjusted for working days, industrial output (C) decreased by 2.7 per cent in January from one year back. Seasonally adjusted output went down by 5.3 per cent from the month before.

**Table 1. Volume index of industrial output, value added, original, working day adjusted, seasonally adjusted change percentage**

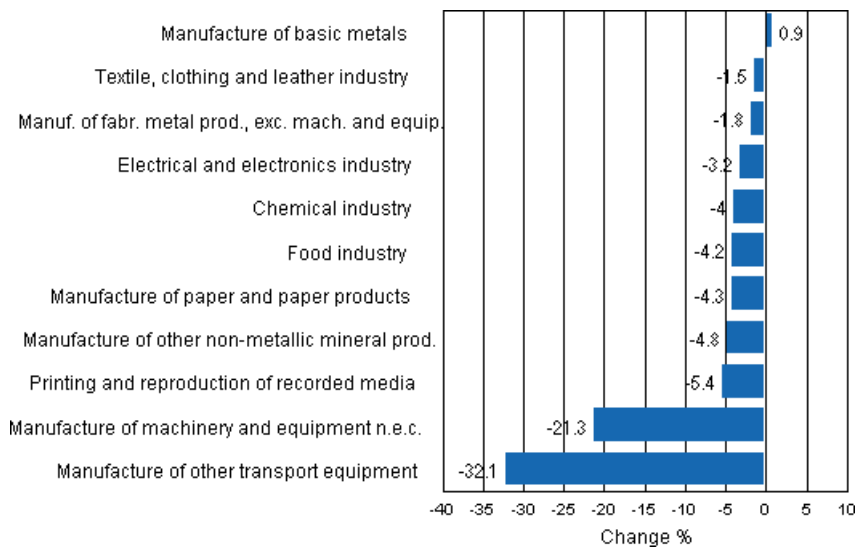
	Value added share	Original change percentage, 2012 JAN / 2011 JAN	Working day adj. change percentage, 2012 JAN / 2011 JAN	Seasonal adj. change percentage, 2012 JAN / 2011 DEC
Industry (Tol 2008)				
Total industries	100,0	-4,8	-5,2	-4,9
B Mining and quarrying	1,7	-7,1	-9,3	-17,6
C Manufacturing	83,7	-2,1	-2,7	-5,3
10 Manufacture of food products	6,5	1,8	0,4	-4,2
11 Manufacture of beverages	1,3	-6,0	-6,0	1,7
13 Manufacture of textiles	0,6	-9,8	-12,6	-1,7
14 Manufacture of wearing apparel	0,4	-20,5	-21,4	1,4
15 Manufacture of leather and related products	0,3	-25,7	-30,5	-3,5
16 Manufacture of wood and of products of wood and cork, except furniture; manufacture of articles of straw and plaiting materials	3,9	-10,5	-13,2	-5,2
17 Manufacture of paper and paper products	9,8	-17,5	-18,4	-4,3
18 Printing and reproduction of recorded media	1,8	-12,6	-11,1	-5,4
23 Manufacture of other non-metallic mineral products	2,9	0,4	-3,2	-4,8
24 Manufacture of basic metals	4,3	7,6	8,8	0,9
25 Manufacture of fabricated metal products, except machinery and equipment	7,2	10,4	7,3	-1,8
28 Manufacture of machinery and equipment n.e.c.	11,2	-8,2	-10,3	-21,3
29 Manufacture of motor vehicles, trailers and semi-trailers	1,1	2,2	-2,0	-10,1
30 Manufacture of other transport equipment	0,9	-21,8	-21,8	-5,4
31 Manufacture of furniture	1,1	2,0	-0,3	-8,7
32 Other manufacturing	0,8	20,0	16,5	4,4
33 Repair and installation of machinery and equipment	3,3	-12,7	-13,5	-9,2
D Electricity, gas, steam and air conditioning supply	12,0	-18,2	-18,2	4,9
E Water supply; sewerage, waste management and remediation activities	2,7	0,7	0,2	-0,4
36 Water collection, treatment and supply	0,6	-0,8	-0,8	-0,1
Main industrial groupings:				
Raw materials and productive goods	39,0	-5,0	-6,3	-2,6
Investment goods	28,8	0,9	-1,6	-9,1
Durable goods	1,4	-0,4	-3,7	-5,8
Other consumer goods	13,4	-0,1	-2,0	-2,7
Special indices:				
10-11 Food industry	7,8	0,6	-1,0	-4,2
13-15 Textile, clothing and leather industry	1,2	-16,3	-19,1	-1,5
16-17 Forest industry	13,6	-15,8	-16,1	-4,1
19-22 Chemical industry	13,1	1,4	0,1	-4,0
24-30 Metal industry	38,0	2,9	3,7	-5,4
26-27 Electrical and electronics industry	13,4	8,6	6,2	-3,2
25,28-30,33 Machinery and metal product industry	23,7	-3,4	-3,4	-16,7
29-30 Manufacture of transport equipment	2,0	-9,7	-13,3	-32,1

## Appendix figures

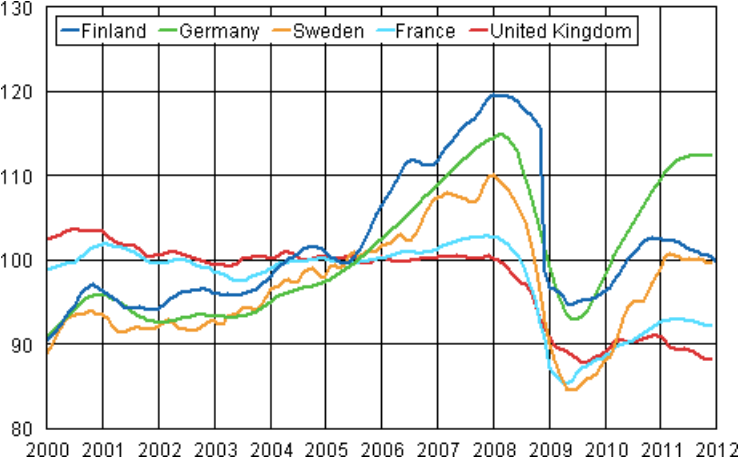
**Appendix figure 1. Working day adjusted change percentage of industrial output January 2011 /January 2012, TOL 2008**



**Appendix figure 2. Seasonally adjusted change percentage of industrial output December 2011 /January 2012, TOL 2008**



**Appendix figure 3. Trend of industrial output Finland, Germany, Sweden, France and United Kingdom (BCD) 2000 - 2012, 2005=100, TOL 2008**



### Inquiries

Kari Rautio 09 1734 2479

Director in charge:

Hannele Orjala

Jukka Appelqvist 09 1734 3391

[volyymi.indeksi@stat.fi](mailto:volyymi.indeksi@stat.fi)

[www.stat.fi](http://www.stat.fi)

Source: Volume Index of Industrial Output 2012, January. Statistics Finland