

Volume index of industrial output

January - April 2011, correction release

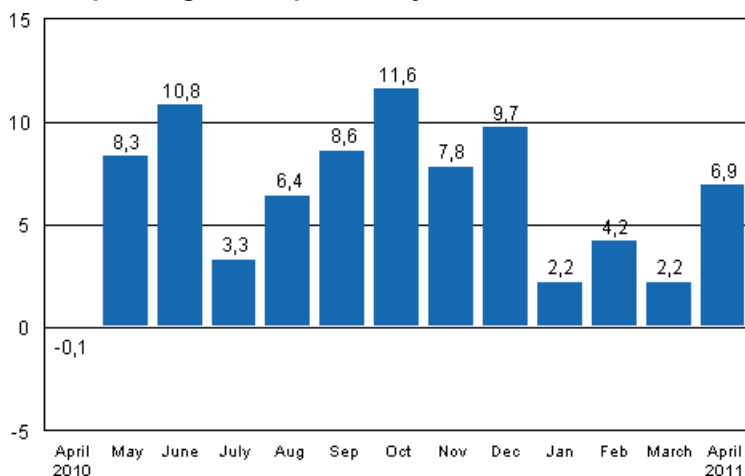
Data of the Volume Index of Industrial Output for January to April 2011 corrected

An error has been detected in Statistics Finland's calculation system of the Volume Index of Industrial Output, which has an effect on the previously published volume index figures for January to April 2011. The erroneous figures for the early part of the year have now been corrected to the statistical releases and databases and to the data files delivered to customers.

The error was caused by that the revision in the weight structure at the turn of the year had not become updated to the calculation system. For that reason, enterprises' weights by size category inside three-digit industries had remained erroneous in the calculation of the index. [Further information](#) about the correction.

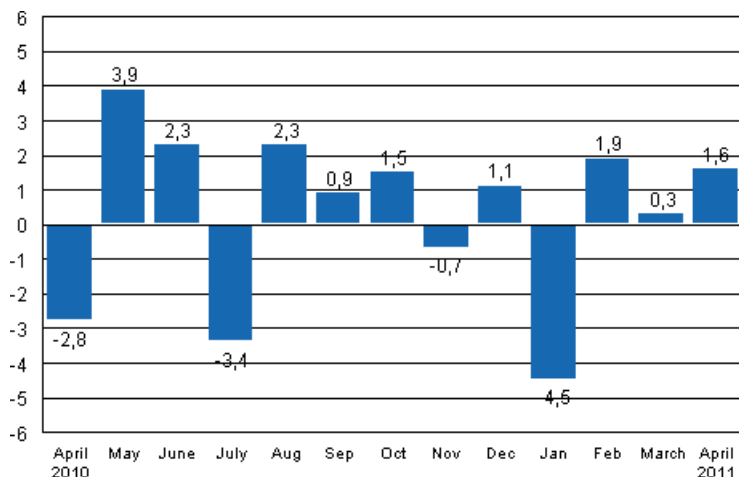
According to Statistics Finland, output of total industries adjusted for working days was 2.2 per cent higher in January 2011 than twelve months earlier. In February, working-day adjusted output was 4.2 per cent higher, in March 2.2 per cent higher and in April 6.9 per cent higher than one year previously.

Working day adjusted change in industrial output (BCDE) from corresponding month previous year, %, TOL 2008



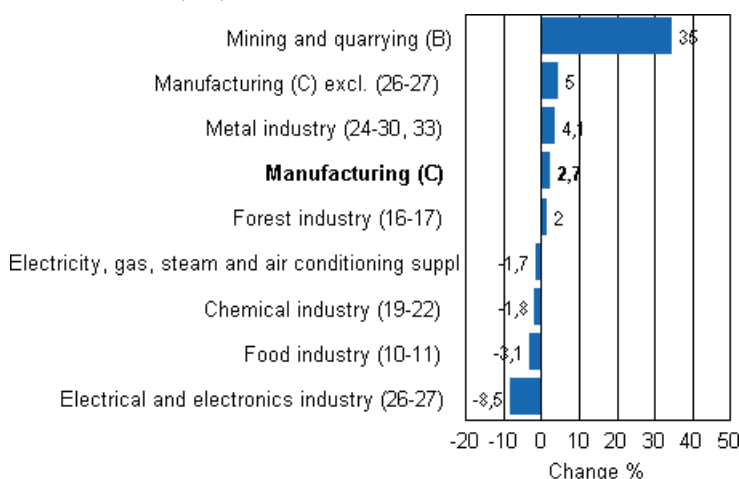
Seasonally adjusted output fell in January by 4.5 per cent compared with the previous month. In February output increased by 1.9 per cent from the previous month. In March output grew by 0.3 per cent and in April by 1.6 per cent compared with the month before.

Seasonally adjusted change in industrial output (BCDE) from previous month, %, TOL 2008



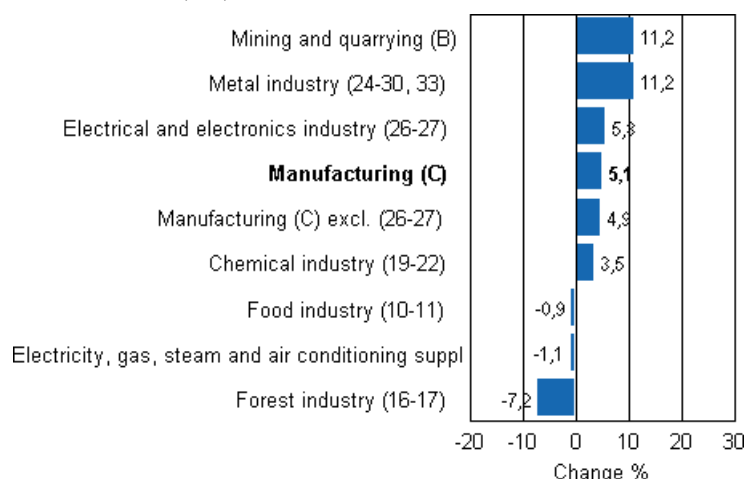
Output went up in most main industries in January. Among the industries, the biggest growth was recorded in mining and quarrying, where output was as much as 35 per cent higher than in January 2010. The strong growth in mining has continued for several months. In the metal industry, output grew by 4.1 per cent from one year ago. Output in the electrical and electronics industry decreased by 8.5 per cent. In the chemical industry, output diminished by 1.8 per cent. In the forest industry, output grew by 2.0 per cent from one year ago. Output in electricity, gas, steam and air conditioning supply fell by 1.7 per cent.

Working day adjusted change in industrial output by industry 1/2010-1/2011, %, TOL 2008



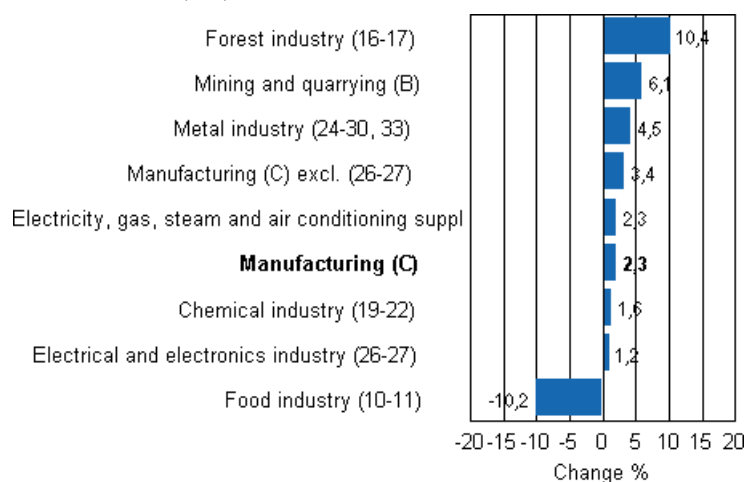
Output went up in most main industries in February. In the metal industry, output was as much as 11.2 per cent higher than in February 2010. In mining and quarrying, output grew by 11.2 per cent. In the chemical industry, output went up by 3.5 per cent. Output in the electrical and electronics industry increased by 5.8 per cent. Among the main industries, output fell in electricity, gas, steam and air conditioning supply and in the forest industry. In the forest industry, output declined by 7.2 per cent.

**Working day adjusted change in industrial output by industry
2/2010-2/2011, %, TOL 2008**



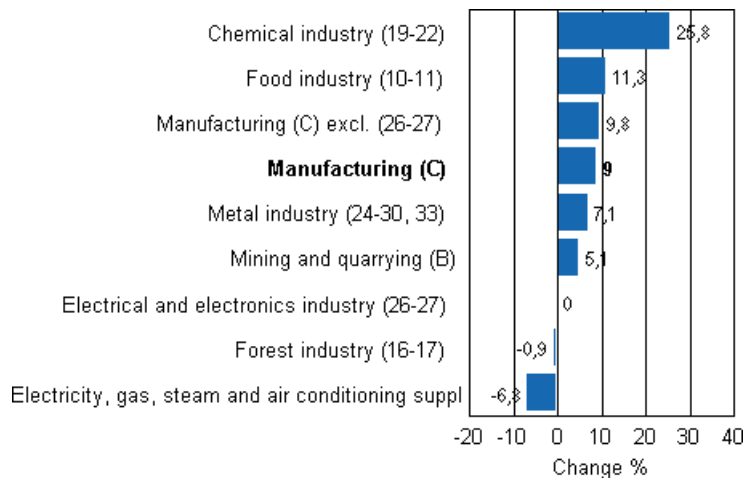
In March mining and quarrying was 6.1 per cent higher than in March 2010. Electricity production went up by 2.3 per cent. In the metal industry, output grew by 4.5 per cent. Output in the electrical and electronics industry went up by 1.2 per cent. In the chemical industry, output increased by 1.6 per cent in March. Among the main industries, output fell most in the food industry, where output was good ten per cent lower than one year previously.

**Working day adjusted change in industrial output by industry
3/2010-3/2011, %, TOL 2008**



In most main industries, output was up year-on-year in April. The biggest increase in output was recorded in the chemical industry. There output was 25.8 per cent higher than in April 2010. In the food industry, output grew by 11.3 per cent. Output in the metal industry was 7.1 per cent higher than one year previously. Electricity production decreased most in April. There output was 6.8 per cent lower than in last year's April.

**Working day adjusted change in industrial output by industry
4/2010-4/2011, %, TOL 2008**



Contents

Industrial output grew by 2.2 per cent in January	6
Industrial output grew by 4.2 per cent in February.....	8
Industrial output grew by 2.2 per cent in March	10
Industrial output grew by 6.9 per cent in April.....	12

Tables

Table 1a. Volume index of industrial output, value added, original, working day adjusted, seasonally adjusted change percentage.....	7
Table 1b. Volume index of industrial output, value added, original, working day adjusted, seasonally adjusted change percentage.....	9
Table 1c. Volume index of industrial output, value added, original, working day adjusted, seasonally adjusted change percentage.....	11
Table 1d. Volume index of industrial output, value added, original, working day adjusted, seasonally adjusted change percentage.....	13

Figures

Appendix figures

Appendix figure 1a. Working day adjusted change percentage of industrial output January 2010 / January 2011, TOL 2008.....	14
Appendix figure 1b. Working day adjusted change percentage of industrial output February 2010 / February 2011, TOL 2008.....	14
Appendix figure 1c. Working day adjusted change percentage of industrial output March 2010 / March 2011, TOL 2008.....	15
Appendix figure 1d. Working day adjusted change percentage of industrial output April 2010 / April 2011, TOL 2008.....	15
Appendix figure 2a. Seasonally adjusted change percentage of industrial output December 2010 / January 2011, TOL 2008.....	16
Appendix figure 2b. Seasonally adjusted change percentage of industrial output January 2011 / February 2011, TOL 2008.....	16
Appendix figure 2c. Seasonally adjusted change percentage of industrial output February 2011 / March 2011, TOL 2008.....	17
Appendix figure 2d. Seasonally adjusted change percentage of industrial output March 2011 / April 2011, TOL 2008.....	17
Appendix figure 3. Trend of industrial output Finland, Germany, Sweden, France and United Kingdom (BCD) 2000 - 2011, 2005=100, TOL 2008.....	17

Industrial output grew by 2.2 per cent in January

According to Statistics Finland, output of total industries (BCDE) adjusted for working days was 2.2 per cent higher in January than twelve months earlier. Seasonally adjusted output fell in January by 4.5 per cent compared with the previous month.

Adjusted for working days, industrial output (C) grew by 2.7 per cent in January from one year back. Mining and quarrying grew most, by as much as 35 per cent. The manufacture of other machinery and equipment went up by 32.4 per cent from one year back. The manufacture of basic metals grew by 16.3 per cent. Output fell by 22.8 per cent in the manufacture of other transport equipment.

Table 1a. Volume index of industrial output, value added, original, working day adjusted, seasonally adjusted change percentage

	Value added share	Original change percentage, 2011 JAN / 2010 JAN	Working day adj. change percentage, 2011 JAN / 2010 JAN	Seasonal adj. change percentage, 2011 JAN / 2010 DEC
Industry (Tol 2008)				
Total industries	100,0	3,4	2,2	-4,5
B Mining and quarrying	1,6	21,8	35,0	-27,1
C Manufacturing	83,6	4,3	2,7	-17,5
10 Manufacture of food products	7,4	-0,1	-2,7	-2,3
11 Manufacture of beverages	1,3	-3,3	-3,3	1,8
13 Manufacture of textiles	0,7	16,2	16,2	0,5
14 Manufacture of wearing apparel	0,4	11,0	7,6	-10,8
15 Manufacture of leather and related products	0,2	17,0	17,0	-7,1
16 Manufacture of wood and of products of wood and cork, except furniture; manufacture of articles of straw and plaiting materials	3,3	9,4	6,2	0,9
17 Manufacture of paper and paper products	7,5	0,3	2,5	-0,1
18 Printing and reproduction of recorded media	2,2	2,4	-3,2	-2,4
23 Manufacture of other non-metallic mineral products	3,0	6,0	1,5	-4,9
24 Manufacture of basic metals	2,1	19,6	16,3	-1,3
25 Manufacture of fabricated metal products, except machinery and equipment	8,6	8,0	8,0	-15,8
28 Manufacture of machinery and equipment n.e.c.	11,3	38,8	32,4	7,9
29 Manufacture of motor vehicles, trailers and semi-trailers	1,1	16,1	8,3	-7,9
30 Manufacture of other transport equipment	1,4	-22,8	-22,8	-8,2
31 Manufacture of furniture	1,3	15,5	8,1	-3,5
32 Other manufacturing	0,9	-4,5	-4,5	-3,0
33 Repair and installation of machinery and equipment	3,9	7,2	6,2	-4,6
D Electricity, gas, steam and air conditioning supply	12,4	-1,6	-1,7	-4,3
E Water supply; sewerage, waste management and remediation activities	2,3	3,9	3,7	-1,2
36 Water collection, treatment and supply	0,7	2,3	2,3	-1,1
Main industrial groupings:				
Raw materials and productive goods	34,6	6,8	7,7	-3,0
Investment goods	31,1	3,1	0,6	-10,5
Durable goods	1,7	26,5	20,1	5,1
Other consumer goods	14,9	0,7	-3,4	-3,8
Special indices:				
10-11 Food industry	8,7	-0,6	-3,1	-0,5
13-15 Textile, clothing and leather industry	1,3	14,7	14,7	-0,1
16-17 Forest industry	10,7	2,6	2,0	-0,5
19-22 Chemical industry	13,1	-1,8	-1,8	-27,1
24-30 Metal industry	38,5	7,6	5,0	-8,6
26-27 Electrical and electronics industry	13,9	-9,6	-8,5	-12,3
25,28-30,33 Machinery and metal product industry	26,2	18,4	15,7	1,2
29-30 Manufacture of transport equipment	2,5	-7,3	-7,3	-32,6

Industrial output grew by 4.2 per cent in February

According to Statistics Finland, output of total industries (BCDE) adjusted for working days was 4.2 per cent higher in February than twelve months earlier. Seasonally adjusted industrial output went up by 1.9 per cent from January to February.

Adjusted for working days, industrial output (C) grew by 5.1 per cent in February from one year back. The manufacture of transport equipment increased by 19.1 per cent. The manufacture of basic metals grew by 17.7 per cent. Output decreased in the activity of printing and reproduction of recorded media. There output went down by 6.6 per cent.

Table 1b. Volume index of industrial output, value added, original, working day adjusted, seasonally adjusted change percentage

	Value added share	Original change percentage, 2011 FEB / 2010 FEB	Working day adj. change percentage, 2011 FEB / 2010 FEB	Seasonal adj. change percentage, 2011 FEB / 2011 JAN
Industry (Tol 2008)				
Total industries	100,0	4,2	4,2	1,9
B Mining and quarrying	1,6	11,2	11,2	-5,9
C Manufacturing	83,6	5,1	5,1	7,1
10 Manufacture of food products	7,4	-0,1	-0,1	0,3
11 Manufacture of beverages	1,3	-5,0	-5,0	-0,1
13 Manufacture of textiles	0,7	18,1	18,1	1,4
14 Manufacture of wearing apparel	0,4	22,5	22,5	4,0
15 Manufacture of leather and related products	0,2	14,6	14,6	-3,3
16 Manufacture of wood and of products of wood and cork, except furniture; manufacture of articles of straw and plaiting materials	3,3	-7,9	-7,9	-3,4
17 Manufacture of paper and paper products	7,5	-7,0	-7,0	-3,0
18 Printing and reproduction of recorded media	2,2	-6,6	-6,6	-2,6
23 Manufacture of other non-metallic mineral products	3,0	2,6	2,6	-0,0
24 Manufacture of basic metals	2,1	17,8	17,7	2,3
25 Manufacture of fabricated metal products, except machinery and equipment	8,6	8,3	8,3	4,5
28 Manufacture of machinery and equipment n.e.c.	11,3	17,4	17,4	-4,3
29 Manufacture of motor vehicles, trailers and semi-trailers	1,1	40,7	40,7	10,8
30 Manufacture of other transport equipment	1,4	-1,7	-1,7	2,2
31 Manufacture of furniture	1,3	9,4	9,4	1,2
32 Other manufacturing	0,9	-5,8	-5,8	1,0
33 Repair and installation of machinery and equipment	3,9	9,6	9,6	1,6
D Electricity, gas, steam and air conditioning supply	12,4	-1,1	-1,1	-0,8
E Water supply; sewerage, waste management and remediation activities	2,3	4,2	4,2	2,7
36 Water collection, treatment and supply	0,7	3,0	3,0	2,5
Main industrial groupings:				
Raw materials and productive goods	34,6	2,5	2,5	-0,2
Investment goods	31,1	9,6	9,6	5,1
Durable goods	1,7	7,1	7,1	-5,8
Other consumer goods	14,9	3,0	3,0	1,4
Special indices:				
10-11 Food industry	8,7	-0,9	-0,9	0,4
13-15 Textile, clothing and leather industry	1,3	18,9	18,9	0,8
16-17 Forest industry	10,7	-7,3	-7,2	-2,6
19-22 Chemical industry	13,1	3,5	3,5	12,8
24-30 Metal industry	38,5	11,3	11,3	3,9
26-27 Electrical and electronics industry	13,9	5,8	5,8	9,5
25,28-30,33 Machinery and metal product industry	26,2	13,4	13,4	-0,3
29-30 Manufacture of transport equipment	2,5	19,1	19,1	5,3

Industrial output grew by 2.2 per cent in March

According to Statistics Finland, output of total industries (BCDE) adjusted for working days was 2.2 per cent higher in March than twelve months earlier. Seasonally adjusted output grew in March by 0.3 per cent compared with the previous month.

Adjusted for working days, industrial output (C) grew by 2.3 per cent from one year back in March. The manufacture of transport equipment decreased by 25.5 per cent. The manufacture of food products also diminished. Its output fell by 8.1 per cent from March 2010. The manufacture of basic metals grew by 16.9 per cent.

Table 1c. Volume index of industrial output, value added, original, working day adjusted, seasonally adjusted change percentage

	Value added share	Original change percentage, 2011 MAR / 2010 MAR	Working day adj. change percentage, 2011 MAR / 2010 MAR	Seasonal adj. change percentage, 2011 MAR / 2011 FEB
Industry (Tol 2008)				
Total industries	100,0	5,5	2,2	0,3
B Mining and quarrying	1,6	14,4	6,1	0,0
C Manufacturing	83,6	5,9	2,3	3,6
10 Manufacture of food products	7,4	-5,9	-8,1	-2,5
11 Manufacture of beverages	1,3	-17,4	-19,5	-0,0
13 Manufacture of textiles	0,7	15,2	11,6	0,2
14 Manufacture of wearing apparel	0,4	22,7	16,7	0,0
15 Manufacture of leather and related products	0,2	5,0	-1,7	-3,1
16 Manufacture of wood and of products of wood and cork, except furniture; manufacture of articles of straw and plaiting materials	3,3	8,9	2,8	3,7
17 Manufacture of paper and paper products	7,5	14,1	13,4	1,6
18 Printing and reproduction of recorded media	2,2	-6,2	-9,7	2,0
23 Manufacture of other non-metallic mineral products	3,0	11,0	5,2	-0,6
24 Manufacture of basic metals	2,1	18,2	16,9	2,1
25 Manufacture of fabricated metal products, except machinery and equipment	8,6	7,5	3,2	3,1
28 Manufacture of machinery and equipment n.e.c.	11,3	18,2	13,4	0,1
29 Manufacture of motor vehicles, trailers and semi-trailers	1,1	-5,7	-12,3	-15,4
30 Manufacture of other transport equipment	1,4	-35,3	-39,4	-8,2
31 Manufacture of furniture	1,3	6,2	1,2	-1,4
32 Other manufacturing	0,9	-6,9	-8,9	-0,3
33 Repair and installation of machinery and equipment	3,9	15,3	11,1	1,9
D Electricity, gas, steam and air conditioning supply	12,4	2,3	2,3	0,2
E Water supply; sewerage, waste management and remediation activities	2,3	2,3	-0,4	-2,4
36 Water collection, treatment and supply	0,7	2,2	1,2	-1,3
Main industrial groupings:				
Raw materials and productive goods	34,6	12,1	8,4	3,5
Investment goods	31,1	5,0	2,3	-1,3
Durable goods	1,7	8,5	2,5	-0,2
Other consumer goods	14,9	-3,3	-6,7	-1,7
Special indices:				
10-11 Food industry	8,7	-7,7	-10,2	-3,4
13-15 Textile, clothing and leather industry	1,3	15,8	11,5	0,3
16-17 Forest industry	10,7	12,4	10,4	1,9
19-22 Chemical industry	13,1	3,9	1,6	7,8
24-30 Metal industry	38,5	7,8	3,5	-1,4
26-27 Electrical and electronics industry	13,9	4,5	1,2	-0,5
25,28-30,33 Machinery and metal product industry	26,2	9,9	4,3	-2,2
29-30 Manufacture of transport equipment	2,5	-22,6	-25,5	-10,8

Industrial output grew by 6.9 per cent in April

According to Statistics Finland, output of total industries (BCDE) adjusted for working days was 6.9 per cent higher in April than twelve months earlier. Seasonally adjusted output grew by 1.6 per cent in April relative to March.

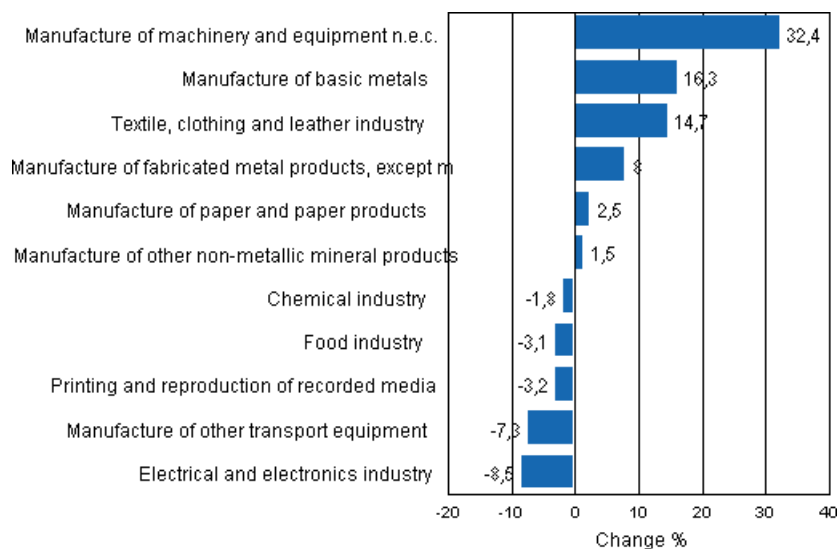
Adjusted for working days, industrial output (C) increased by nine per cent in April from one year back. The manufacture of metal products went up by 9.4 per cent.

Table 1d. Volume index of industrial output, value added, original, working day adjusted, seasonally adjusted change percentage

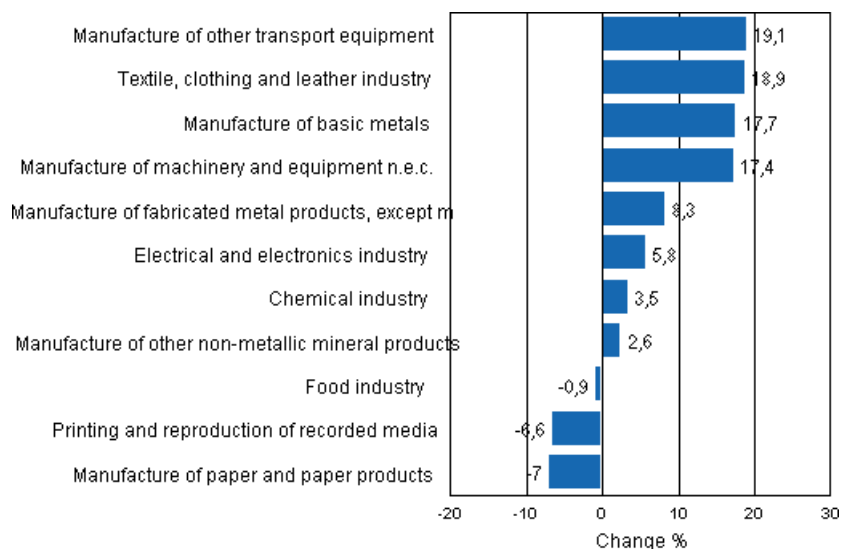
	Value added share	Original change percentage, 2011 APR / 2010 APR	Working day adj. change percentage, 2011 APR / 2010 APR	Seasonal adj. change percentage, 2011 APR / 2011 MAR
Industry (Tot 2008)				
Total industries	100,0	4,4	6,9	1,6
B Mining and quarrying	1,6	5,1	5,1	8,7
C Manufacturing	83,6	6,2	9,0	4,6
10 Manufacture of food products	7,4	8,5	10,4	0,2
11 Manufacture of beverages	1,3	13,1	16,1	6,0
13 Manufacture of textiles	0,7	-3,9	0,2	-0,6
14 Manufacture of wearing apparel	0,4	7,9	13,4	0,4
15 Manufacture of leather and related products	0,2	6,3	10,4	2,5
16 Manufacture of wood and of products of wood and cork, except furniture; manufacture of articles of straw and plaiting materials	3,3	-2,0	2,9	0,9
17 Manufacture of paper and paper products	7,5	-2,9	-3,2	1,3
18 Printing and reproduction of recorded media	2,2	3,7	9,7	6,8
23 Manufacture of other non-metallic mineral products	3,0	3,5	8,0	8,3
24 Manufacture of basic metals	2,1	3,7	4,9	1,6
25 Manufacture of fabricated metal products, except machinery and equipment	8,6	5,1	9,4	4,6
28 Manufacture of machinery and equipment n.e.c.	11,3	9,5	14,2	0,5
29 Manufacture of motor vehicles, trailers and semi-trailers	1,1	-13,1	-6,5	0,3
30 Manufacture of other transport equipment	1,4	-8,9	-2,8	5,8
31 Manufacture of furniture	1,3	8,2	12,7	6,4
32 Other manufacturing	0,9	15,6	18,1	5,3
33 Repair and installation of machinery and equipment	3,9	8,0	12,1	0,6
D Electricity, gas, steam and air conditioning supply	12,4	-6,8	-6,8	-6,2
E Water supply; sewerage, waste management and remediation activities	2,3	4,7	7,0	2,9
36 Water collection, treatment and supply	0,7	5,4	6,4	1,7
Main industrial groupings:				
Raw materials and productive goods	34,6	2,7	4,6	-0,1
Investment goods	31,1	3,0	5,7	0,3
Durable goods	1,7	2,9	7,9	1,6
Other consumer goods	14,9	9,0	12,4	1,5
Special indices:				
10-11 Food industry	8,7	9,2	11,3	1,3
13-15 Textile, clothing and leather industry	1,3	1,9	5,9	1,5
16-17 Forest industry	10,7	-2,6	-0,9	1,8
19-22 Chemical industry	13,1	22,9	25,8	1,6
24-30 Metal industry	38,5	3,5	6,5	0,8
26-27 Electrical and electronics industry	13,9	0,3	-0,0	-4,3
25,28-30,33 Machinery and metal product industry	26,2	5,7	9,9	3,2
29-30 Manufacture of transport equipment	2,5	-11,0	-7,6	3,0

Appendix figures

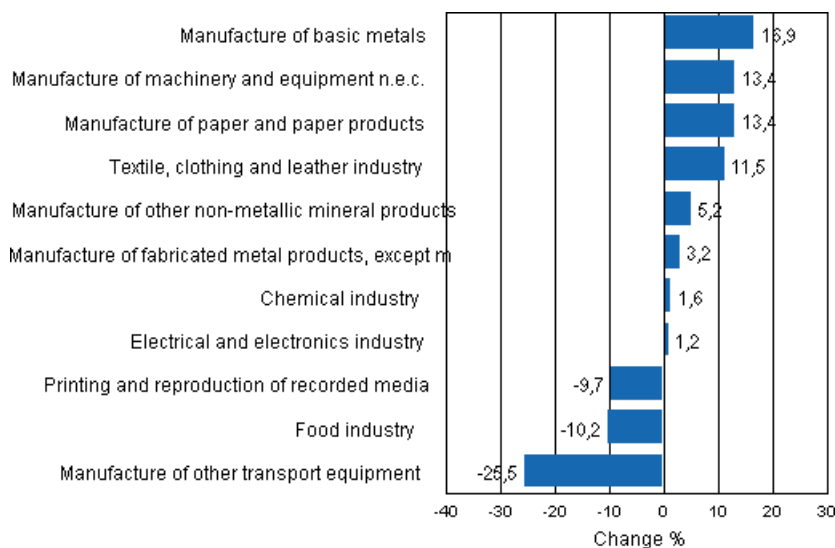
Appendix figure 1a. Working day adjusted change percentage of industrial output January 2010 / January 2011, TOL 2008



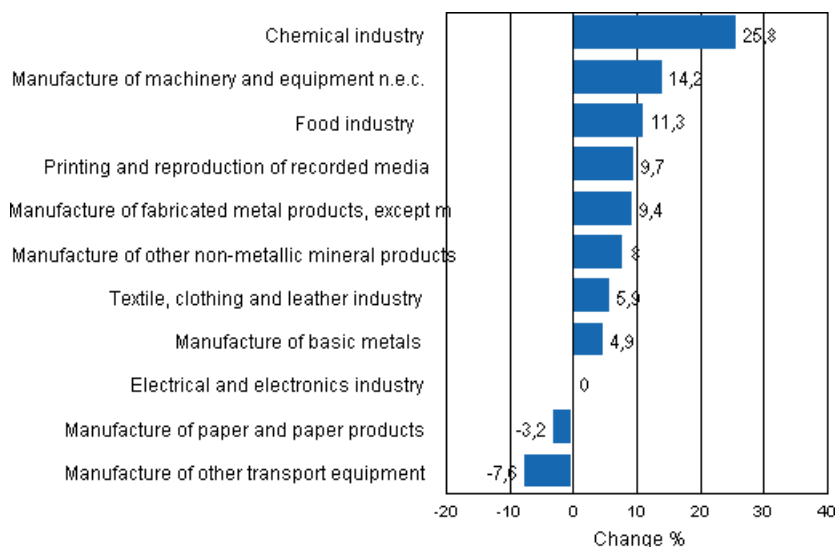
Appendix figure 1b. Working day adjusted change percentage of industrial output February 2010 / February 2011, TOL 2008



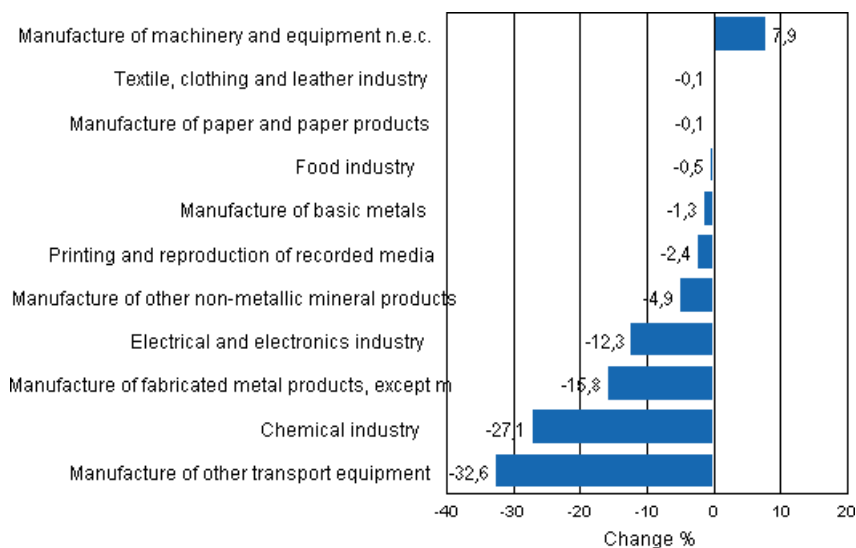
Appendix figure 1c. Working day adjusted change percentage of industrial output March 2010 / March 2011, TOL 2008



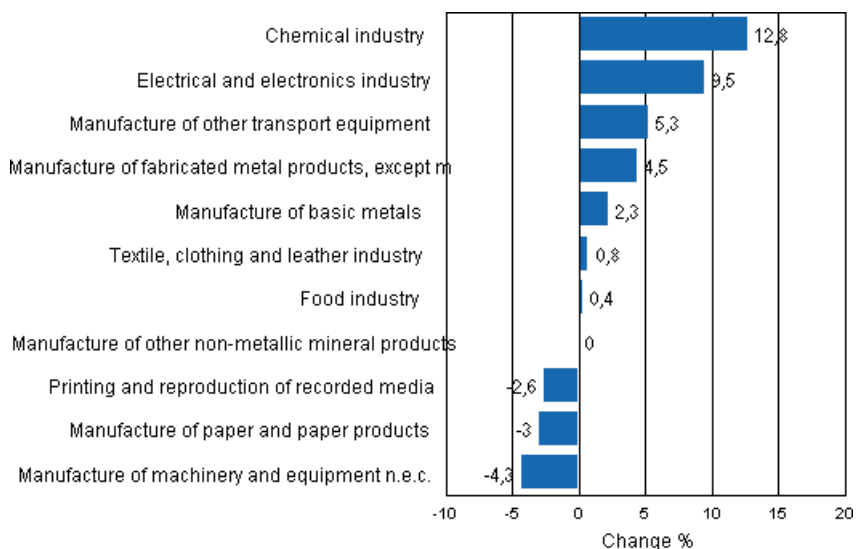
Appendix figure 1d. Working day adjusted change percentage of industrial output April 2010 / April 2011, TOL 2008



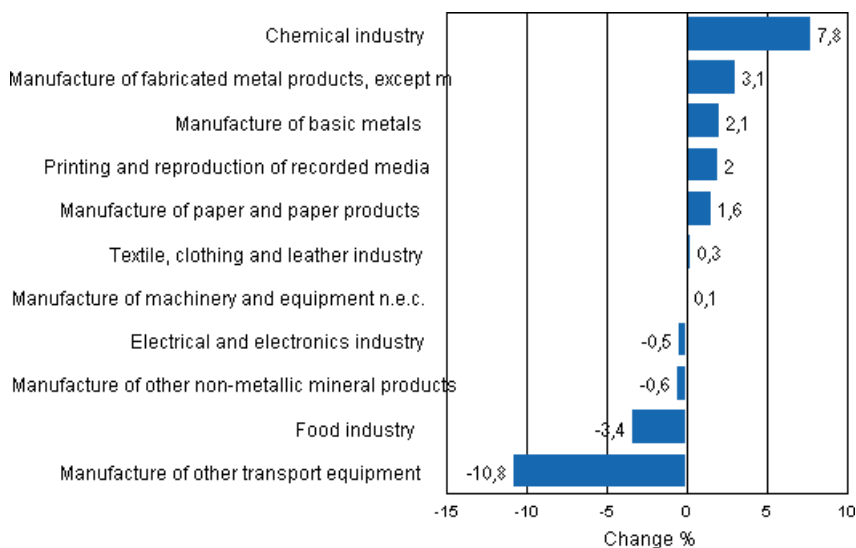
Appendix figure 2a. Seasonally adjusted change percentage of industrial output December 2010 / January 2011, TOL 2008



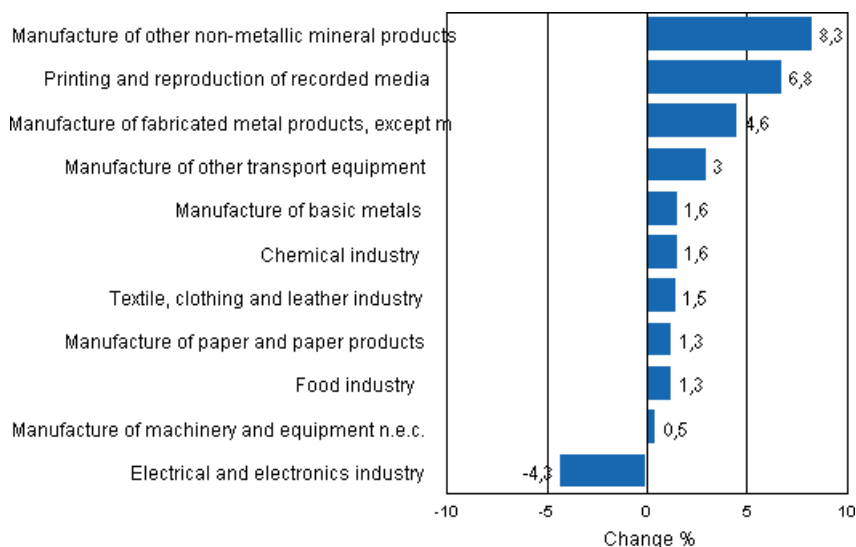
Appendix figure 2b. Seasonally adjusted change percentage of industrial output January 2011 / February 2011, TOL 2008



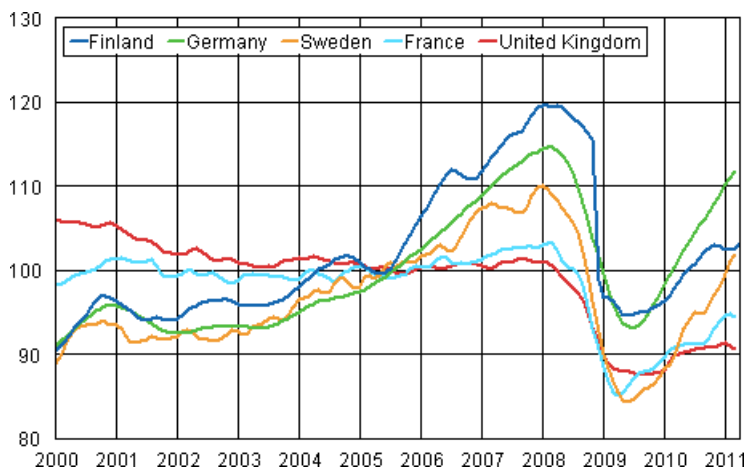
Appendix figure 2c. Seasonally adjusted change percentage of industrial output February 2011 / March 2011, TOL 2008



Appendix figure 2d. Seasonally adjusted change percentage of industrial output March 2011 / April 2011, TOL 2008



Appendix figure 3. Trend of industrial output Finland, Germany, Sweden, France and United Kingdom (BCD) 2000 - 2011, 2005=100, TOL 2008



Suomen virallinen tilasto
Finlands officiella statistik
Official Statistics of Finland

Industry 2011

Inquiries

Kari Rautio (09) 1734 2479

Director in charge:

Hannele Orjala

volyyimi.indeksi@stat.fi

www.stat.fi

Source: Volume Index of Industrial Output 2011, January-April. Statistics Finland