

Volume index of industrial output

2011, February

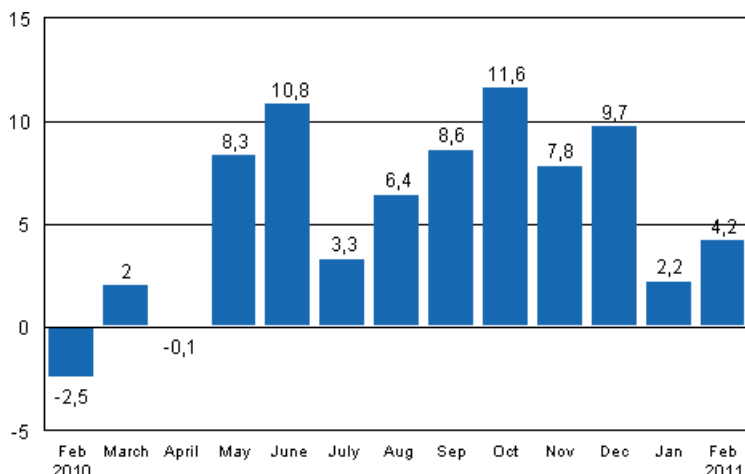
Industrial output grew by 4.2 per cent in February

Corrected 28 June 2011

Nearly all figures have been revised. [Further information](#) about the correction.

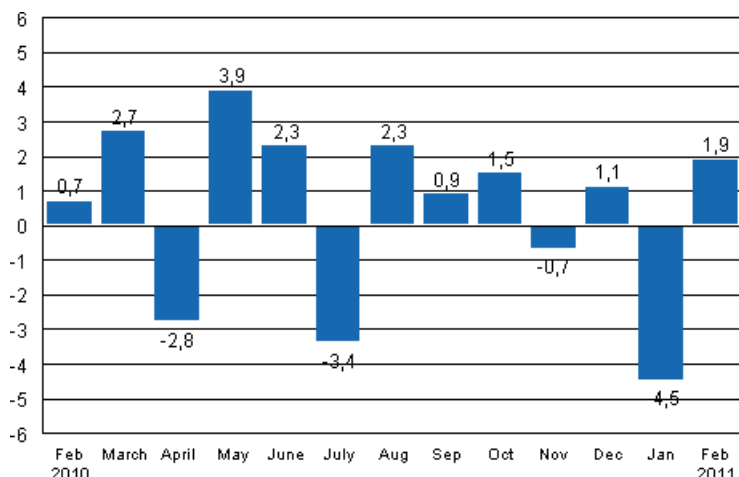
According to Statistics Finland, output of total industries adjusted for working days was 4.2 per cent higher in February 2011 than twelve months earlier. In January, output was 2.2 per cent higher than in January 2010.

Working day adjusted change in industrial output (BCDE) from corresponding month previous year, %, TOL 2008



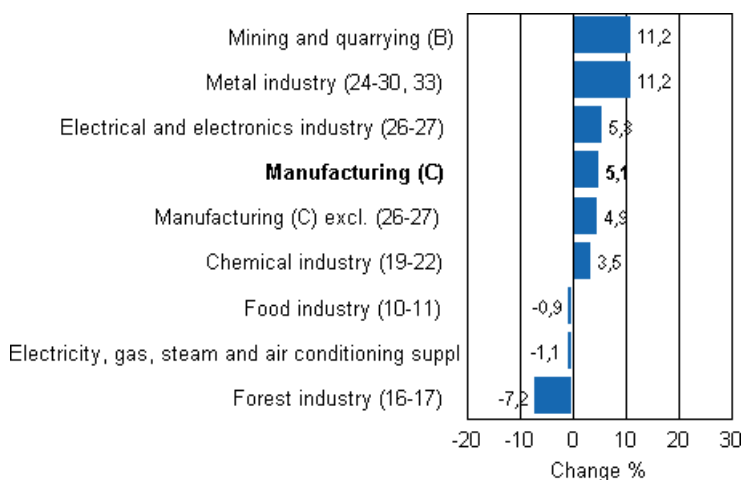
Seasonally adjusted industrial output went up by 1.9 per cent from January to February. In January, output decreased by 4.5 per cent from the previous month. In December 2010, seasonally adjusted output grew by 1.1 per cent from November.

Seasonally adjusted change in industrial output (BCDE) from previous month, %, TOL 2008



Output went up in most main industries in February. The biggest growth among the industries was recorded in the metal industry where output was 11.2 per cent higher than in February 2010. In mining and quarrying, output grew by 11.2 per cent, and in the chemical industry by 3.5 per cent. Output in the electrical and electronics industry went up by 5.8 per cent. Among the main industries, output fell in electricity, gas, steam and air conditioning supply. In the forest industry, output declined by 7.2 per cent.

Working day adjusted change in industrial output by industry 2/2010-2/2011, %, TOL 2008



Capacity utilisation rate in manufacturing was 78.3 per cent in February, or 4.4 percentage points higher than one year earlier. In the forest industry, capacity utilisation rate was 82 per cent in February, or 1.2 percentage points lower than in February 2010. In the metal industry, capacity utilisation rate was 79.3 per cent in February, or 8.2 percentage points higher than one year earlier.

Contents

Industrial output grew by 4.2 per cent in February.....	4
---	---

Tables

Table 1. Volume index of industrial output, value added, original, working day adjusted, seasonally adjusted change percentage.....	5
---	---

Figures

Appendix figures

Appendix figure 1. Working day adjusted change percentage of industrial output February 2010 /February 2011, TOL 2008.....	6
Appendix figure 2. Seasonally adjusted change percentage of industrial output January 2011 /February 2010, TOL 2008.....	6
Appendix figure 3. Trend of industrial output Finland, Germany, Sweden, France and United Kingdom (BCD) 2000 - 2011, 2005=100, TOL 2008.....	?

Industrial output grew by 4.2 per cent in February

According to Statistics Finland, output of total industries (BCDE) adjusted for working days was 4.2 per cent higher in February than twelve months earlier. Seasonally adjusted industrial output went up by 1.9 per cent from January to February.

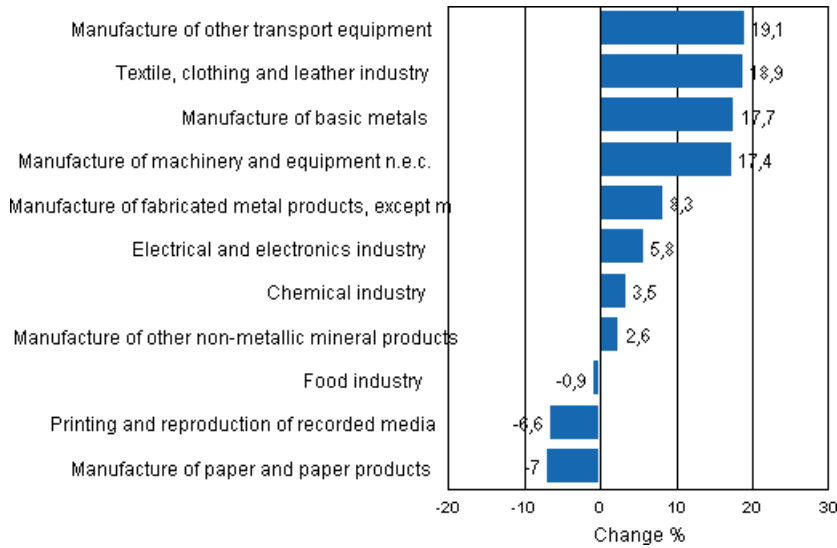
Adjusted for working days, industrial output (C) grew by 5.1 per cent in February from one year back. Output growth in the manufacture of transport equipment by 19,1 per cent. The manufacture of basic metals grew by 17.7 per cent. Output decreased in the activity of printing and reproduction of recorded media. Its output fell by 6.6 per cent.

Table 1. Volume index of industrial output, value added, original, working day adjusted, seasonally adjusted change percentage

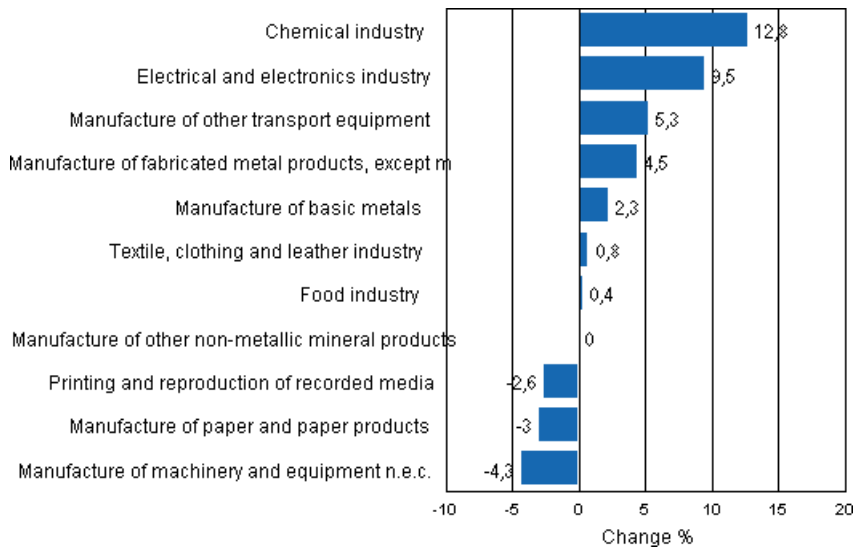
	Value added share	Original change percentage, 2011 FEB / 2010 FEB	Working day adj. change percentage, 2011 FEB / 2010 FEB	Seasonal adj. change percentage, 2011 FEB / 2011 JAN
Industry (Tol 2008)				
Total industries	100,0	4,2	4,2	1,9
B Mining and quarrying	1,6	11,2	11,2	-5,9
C Manufacturing	83,6	5,1	5,1	7,1
10 Manufacture of food products	7,4	-0,1	-0,1	0,3
11 Manufacture of beverages	1,3	-5,0	-5,0	-0,1
13 Manufacture of textiles	0,7	18,1	18,1	1,4
14 Manufacture of wearing apparel	0,4	22,5	22,5	4,0
15 Manufacture of leather and related products	0,2	14,6	14,6	-3,3
16 Manufacture of wood and of products of wood and cork, except furniture; manufacture of articles of straw and plaiting materials	3,3	-7,9	-7,9	-3,4
17 Manufacture of paper and paper products	7,5	-7,0	-7,0	-3,0
18 Printing and reproduction of recorded media	2,2	-6,6	-6,6	-2,6
23 Manufacture of other non-metallic mineral products	3,0	2,6	2,6	-0,0
24 Manufacture of basic metals	2,1	17,8	17,7	2,3
25 Manufacture of fabricated metal products, except machinery and equipment	8,6	8,3	8,3	4,5
28 Manufacture of machinery and equipment n.e.c.	11,3	17,4	17,4	-4,3
29 Manufacture of motor vehicles, trailers and semi-trailers	1,1	40,7	40,7	10,8
30 Manufacture of other transport equipment	1,4	-1,7	-1,7	2,2
31 Manufacture of furniture	1,3	9,4	9,4	1,2
32 Other manufacturing	0,9	-5,8	-5,8	1,0
33 Repair and installation of machinery and equipment	3,9	9,6	9,6	1,6
D Electricity, gas, steam and air conditioning supply	12,4	-1,1	-1,1	-0,8
E Water supply; sewerage, waste management and remediation activities	2,3	4,2	4,2	2,7
36 Water collection, treatment and supply	0,7	3,0	3,0	2,5
Main industrial groupings:				
Raw materials and productive goods	34,6	2,5	2,5	-0,2
Investment goods	31,1	9,6	9,6	5,1
Durable goods	1,7	7,1	7,1	-5,8
Other consumer goods	14,9	3,0	3,0	1,4
Special indices:				
10-11 Food industry	8,7	-0,9	-0,9	0,4
13-15 Textile, clothing and leather industry	1,3	18,9	18,9	0,8
16-17 Forest industry	10,7	-7,3	-7,2	-2,6
19-22 Chemical industry	13,1	3,5	3,5	12,8
24-30 Metal industry	38,5	11,3	11,3	3,9
26-27 Electrical and electronics industry	13,9	5,8	5,8	9,5
25,28-30,33 Machinery and metal product industry	26,2	13,4	13,4	-0,3
29-30 Manufacture of transport equipment	2,5	19,1	19,1	5,3

Appendix figures

Appendix figure 1. Working day adjusted change percentage of industrial output February 2010 /February 2011, TOL 2008



Appendix figure 2. Seasonally adjusted change percentage of industrial output January 2011 /February 2010, TOL 2008



Suomen virallinen tilasto
Finlands officiella statistik
Official Statistics of Finland

Industry 2011

Inquiries

Kari Rautio (09) 1734 2479

Director in charge:

Hannele Orjala

volyyimi.indeksi@stat.fi

www.stat.fi

Source: Volume Index of Industrial Output 2011, February. Statistics Finland