

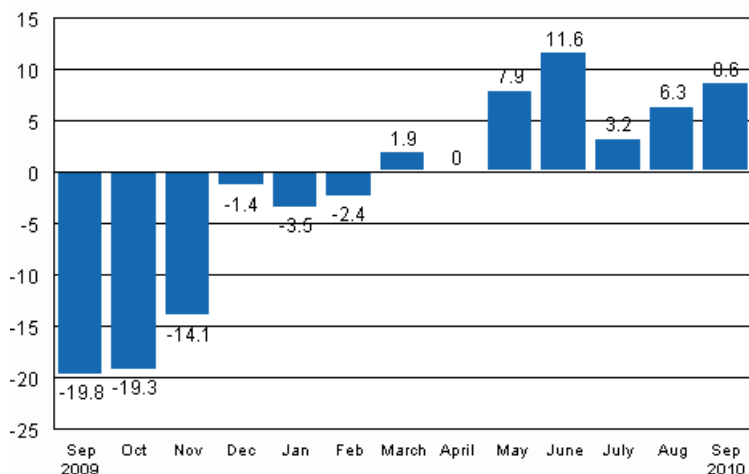
# Volume index of industrial output

2010, September

## Industrial output grew by 8.6 per cent in September

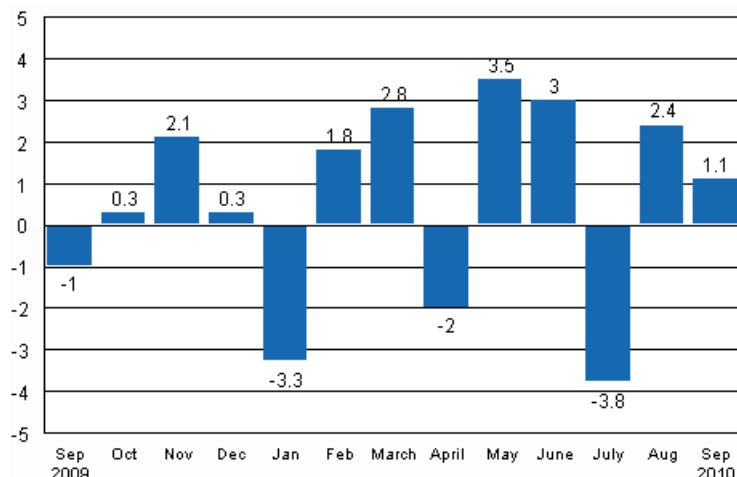
According to Statistics Finland, output of total industries adjusted for working days was 8.6 per cent higher in September 2010 than twelve months earlier. In August, output was 6.3 per cent up year-on-year. In the January to September period, industrial output grew by 3.9 per cent from twelve months back.

**Working day adjusted change in industrial output (BCDE) from corresponding month previous year, %, TOL 2008**



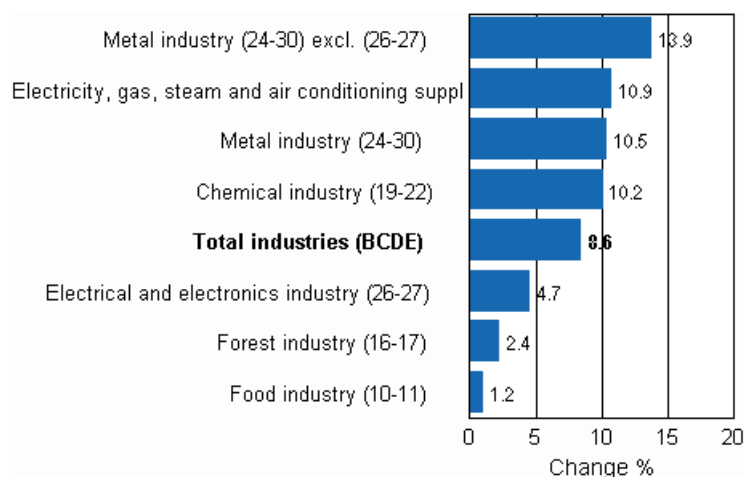
Seasonally adjusted output went up by 1.1 per cent in September from the previous month. In August, output increased by 2.4 per cent from the previous month. In July, seasonally adjusted output fell by 3.8 per cent from June.

**Seasonally adjusted change in industrial output (BCDE) from previous month, %, TOL 2008**



Output went up in all main industries in September. The economic recovery can also be seen as growth in the consumption and production of electricity. Output in electricity, gas, steam and air conditioning supply grew by 10.9 per cent. The biggest increase of 13.9 per cent was recorded in the output of metal industry exclusive of manufacture of electrical and electronic products. In the whole metal industry output grew by 10.5 per cent. Output in the chemical industry went up by 10.2 per cent in September. In the electrical and electronics industry output increased by 4.7 per cent. The food industry’s output grew by 1.2 per cent in September.

**Working day adjusted change in industrial output by industry 9/2009-9/2010, %, TOL 2008**



Capacity utilisation rate in manufacturing was 77 per cent in September, or 7.3 percentage points higher than twelve months earlier. In the forest industry capacity utilisation rate was 84.4 per cent in September, and had risen by 6.9 percentage points from one year back. In the metal industry capacity utilisation rate was 74.3 per cent in September, or 9.6 percentage points higher than one year earlier.

**Estimation**

Statistics Finland has increased the use of estimation and around ten per cent of the index for September was estimated. In the Electrical and electronics industry (26-27) estimation was used in the calculation of the September index. The Tax Administration’s payment control data are used to compile statistics on the

output of enterprises with fewer than 50 employees. Enterprises with fewer than 50 employees account for around 13 per cent of industrial output and these data cover nearly 70 per cent of the production of enterprises with fewer than 50 employees. These data are not at Statistics Finland's disposal by the release date of the volume index of industrial output. For this reason the data on these enterprises are estimated for the month the release relates. The payment control data will be available when releasing data for the month for the second time, i.e. in the data for August. Revised data for September 2010 will be published at 9 am on 10 December 2010 in connection with the release of industrial output data for October 2010. Because of the method used, seasonally adjusted figures for previous months may change even if the original figures do not become revised. The seasonally adjusted figures will also be adjusted for working days.

### **Seasonal adjustment models have been reviewed**

The used seasonal adjustment models have been reviewed and amended in the case of some industries in connection with the release of data concerning September. This also affects seasonally adjusted point figures and change percentages of previous months. In accordance with international recommendations, seasonal adjustment models should be reviewed once a year.

# Contents

Industrial output grew by 8.6 per cent in September.....	5
--	---

## Tables

Table 1. Volume index of industrial output, value added, original, working day adjusted, seasonally adjusted change percentage.....	6
---	---

## Figures

### Appendix figures

Appendix figure 1. Working day adjusted change percentage of industrial output September 2009 / September 2010, TOL 2008.....	7
Appendix figure 2. Seasonally adjusted change percentage of industrial output August 2010 /September 2010, TOL 2008.....	7
Appendix figure 3. Trend of industrial output Finland, Germany, Sweden, France and United Kingdom (BCD) 2000 - 2010, 2005=100, TOL 2008.....	8

## ***Industrial output grew by 8.6 per cent in September***

According to Statistics Finland, output of total industries adjusted for working days was 8.6 per cent higher in September 2010 than twelve months earlier. Seasonally adjusted output went up by 1.1 per cent in September relative to August.

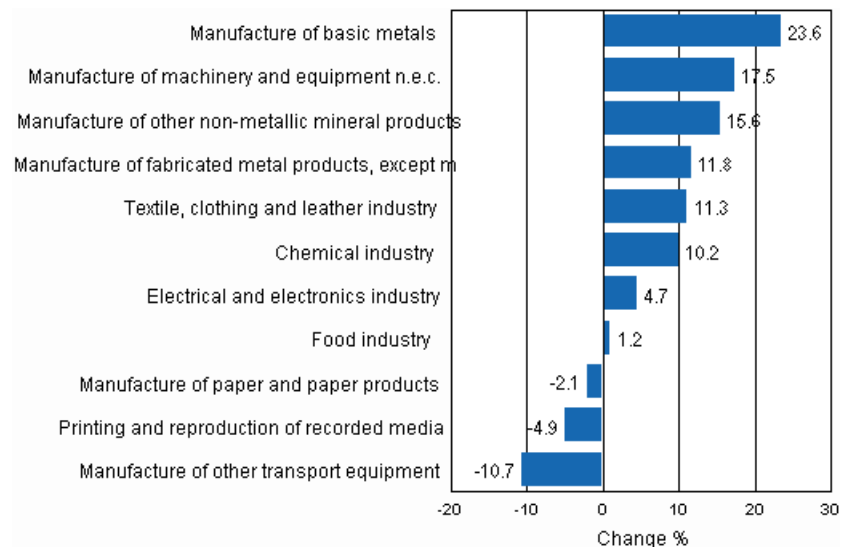
Adjusted for working days, industrial output grew by 8.1 per cent from one year back in September. In the manufacture of basic metals, output increased by 23.6 per cent in September. Just under 18 per cent more machinery and equipment was produced than one year earlier. Output of sawn timber adjusted for working days was 12.4 per cent up year-on-year in September. The biggest fall in output of nearly 32 per cent was recorded in the manufacture of other transport equipment. Output of paper products also decreased in September by 2.1 per cent from one year back.

**Table 1. Volume index of industrial output, value added, original, working day adjusted, seasonally adjusted change percentage**

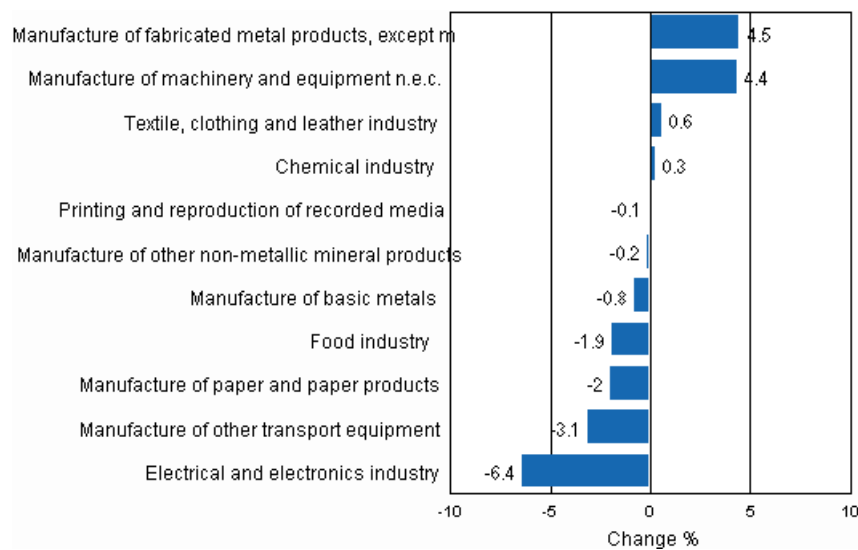
	Value added share	Original change percentage, 2010 SEP / 2009 SEP	Working day adj. change percentage, 2010 SEP / 2009 SEP	Seasonal adj. change percentage, 2010 SEP / 2010 AUG
Industry (Tol 2008)				
Total industries	100,0	8,1	8,6	1,1
B Mining and quarrying	1,6	20,7	20,9	32,7
C Manufacturing	83,6	7,6	8,1	0,4
10 Manufacture of food products	7,4	1,3	1,6	-1,3
11 Manufacture of beverages	1,3	-1,8	-1,8	-1,9
13 Manufacture of textiles	0,7	7,3	7,3	0,7
14 Manufacture of wearing apparel	0,4	9,7	9,7	6,4
15 Manufacture of leather and related products	0,2	23,6	23,6	1,4
16 Manufacture of wood and of products of wood and cork, except furniture; manufacture of articles of straw and plaiting materials	3,3	11,4	12,4	2,6
17 Manufacture of paper and paper products	7,5	-1,9	-2,1	-2,0
18 Printing and reproduction of recorded media	2,2	-5,9	-4,9	-0,1
23 Manufacture of other non-metallic mineral products	3,0	15,4	15,6	-0,2
24 Manufacture of basic metals	2,1	21,5	23,6	-0,8
25 Manufacture of fabricated metal products, except machinery and equipment	8,6	11,8	11,8	4,5
28 Manufacture of machinery and equipment n.e.c.	11,3	18,4	17,5	4,4
29 Manufacture of motor vehicles, trailers and semi-trailers	1,1	16,0	16,4	-10,1
30 Manufacture of other transport equipment	1,4	-31,9	-31,9	-4,2
31 Manufacture of furniture	1,3	16,4	16,9	1,2
32 Other manufacturing	0,9	10,9	10,9	2,3
33 Repair and installation of machinery and equipment	3,9	3,4	3,4	2,5
D Electricity, gas, steam and air conditioning supply	12,4	10,9	10,9	7,3
E Water supply; sewerage, waste management and remediation activities	2,3	1,3	1,1	0,9
36 Water collection, treatment and supply	0,7	1,7	1,7	-2,1
Main industrial groupings:				
Raw materials and productive goods	34,6	11,2	11,1	3,3
Investment goods	31,1	5,4	5,4	-1,5
Durable goods	1,7	14,3	15,7	4,3
Other consumer goods	14,9	2,4	2,4	-0,7
Special indices:				
10-11 Food industry	8,7	0,8	1,2	-1,9
13-15 Textile, clothing and leather industry	1,3	11,3	11,3	0,6
16-17 Forest industry	10,7	2,4	2,4	-1,0
19-22 Chemical industry	13,1	10,2	10,2	0,3
24-30 Metal industry	38,5	10,0	10,5	-0,2
26-27 Electrical and electronics industry	13,9	3,3	4,7	-6,4
25,28-30,33 Machinery and metal product industry	26,2	11,3	11,2	2,6
29-30 Manufacture of transport equipment	2,5	-10,7	-10,7	-3,1

## Appendix figures

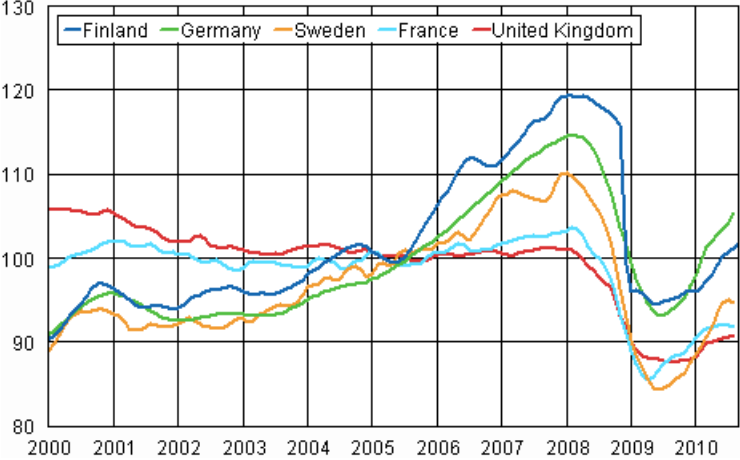
**Appendix figure 1. Working day adjusted change percentage of industrial output September 2009 / September 2010, TOL 2008**



**Appendix figure 2. Seasonally adjusted change percentage of industrial output August 2010 /September 2010, TOL 2008**



**Appendix figure 3. Trend of industrial output Finland, Germany, Sweden, France and United Kingdom (BCD) 2000 - 2010, 2005=100, TOL 2008**





---

Suomen virallinen tilasto  
Finlands officiella statistik  
Official Statistics of Finland

Industry 2010

### Inquiries

Kari Rautio (09) 1734 2479  
Jukka Appelqvist (09) 1734 3391  
Director in charge:  
Hannele Orjala  
volyyymi.indeksi@stat.fi  
www.stat.fi