

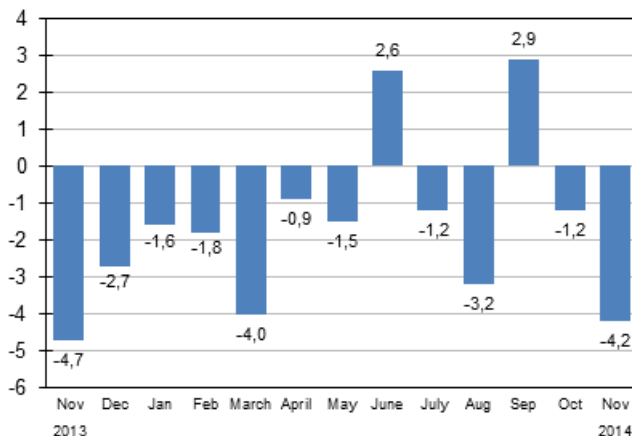
Turnover estimate of large enterprises

2014, November

Turnover of large enterprises contracted in November by 4.2 per cent from one year earlier

According to Statistics Finland's preliminary data, the turnover of large enterprises contracted by 4.2 per cent in November 2014 compared with the corresponding period of the previous year. In the January to November period, the turnover of large enterprises diminished by 1.3 per cent from the corresponding period of the year before.

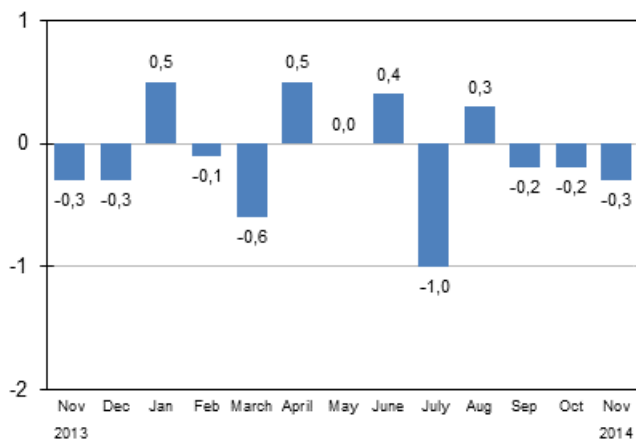
Annual change in the turnover of large enterprises, %



Source: Statistics Finland

In November, seasonally adjusted turnover decreased for large enterprises by 0.3 per cent from October. In September and October, the seasonally adjusted turnover was 0.2 per cent lower compared to the preceding month.

Seasonally adjusted change in the turnover of large enterprises from the previous month, %



Source: Statistics Finland

The turnover estimate of large enterprises is based on a sample formed of 2,000 enterprises with the most significant turnover in manufacturing, construction, trade and other service industries. Excluded from the statistics are enterprises engaged in primary production, and bank and insurance activities.

The enterprises described in the statistics make up nearly 70 per cent of the turnover of all enterprises operating in Finland, represent more than one-half of the investments made and employ good 40 per cent of the personnel of all enterprises.

The data can be used for short-term monitoring of development in business activities and the market. Because the economic development of smaller enterprises may differ from large enterprises, the economic situation of the whole enterprise sector cannot be assessed solely based on these statistics.

More detailed data on the development of various industries are published monthly on [the home pages](#) of business trend indicators.

Contents

Tables

Appendix tables

Appendix table 1. Year-on-year change of large enterprises, %.....4

Figures

Appendix figures

Appendix figure 1. Year-on-year change of large enterprises, trend series.....5

Appendix tables

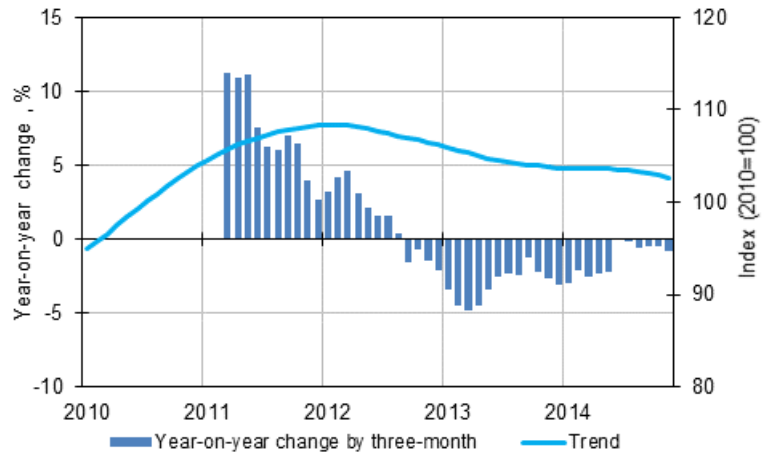
Appendix table 1. Year-on-year change of large enterprises, %

	Year-on-year change by three-month period, % ¹⁾				Cumulative year-on-year change, % ¹⁾	Year-on-year change in the latest month, % ¹⁾
	12/2013-02/2014	03-05/2014	06-08/2014	09-11/2014	01-11/2014	11/2014
Large enterprises	-2,1	-2,2	-0,6	-0,8	-1,3	-4,2

1) Year-on-year change compares the value for an examined time period to the value for the corresponding time period twelve months back.

Appendix figures

Appendix figure 1. Year-on-year change of large enterprises, trend series



Lähde: Statistics Finland

Inquiries

Aki Niskanen 029 551 2657

Jarkko Niemistö 029 551 2951

Director in charge:

Hannele Orjala

palvelut.suhdanne@stat.fi

www.stat.fi

Source: Turnover estimate of large enterprises, Statistics Finland