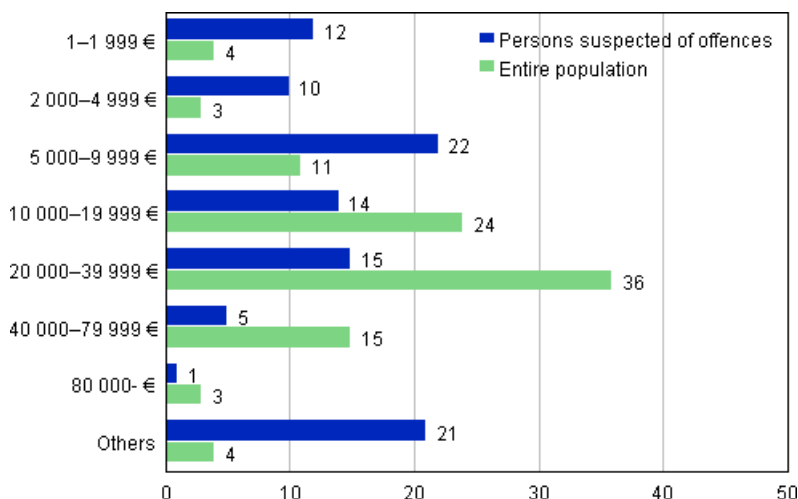


Offences known to the police 2012

Income of persons suspected of offences lower than for the whole population

According to Statistics Finland's data, the number of persons suspected of the offences solved in 2012 by the police, customs and border guard was 284,000. Compared to the previous year, the number of all suspects decreased by six per cent. Average income (income subject to state tax) of suspects aged 15 or over belonging to the registered population was approximately EUR 12,000 while the corresponding income for the entire population was approximately EUR 26,000. The respective median incomes were approximately EUR 6,600 and EUR 22,000.

Persons suspected of offences and the entire population by income subject to state taxation in 2012, aged 15 years and over, %



Of the suspects, 22 per cent had an income of under EUR 5,000 while the corresponding share for the entire population was seven per cent. Twenty-one per cent of the suspects had an income of at least EUR 20,000 while the share for the entire population was 54 per cent. Offences where the suspects had especially low income subject to state tax were robberies and narcotics offences in particular. The income subject to state tax was under EUR 5,000 for one-third of robbery suspects and one-quarter of narcotics offence suspects. At higher income levels, the most common offences were drunken driving, embezzlement and tax offences, and accounting offences. Sixteen per cent of drunken driving suspects, 14 per cent of embezzlement suspects, nine per cent of tax offence suspects and ten per cent of accounting offence suspects had an income of under EUR 5,000. The income levels of female and male suspects differed only

little from one another. Forty-four per cent of men and 48 per cent of women had less than EUR 10,000 in income.

In the statistics the same person can be a suspect several times. The data on income subject to state tax of suspects are based on the National Board of Taxes' data in the tax database concerning income subject to state taxation from 2011. The taxation data of suspects with no personal identity code are not known. Such persons include, for instance, tourists. The group "others" includes members of the registered population (persons permanently or temporarily residing in Finland) with no income or that are unknown, but not persons without personal identity codes.

Persons aged 15 years and over suspected of offences and the entire population by age and income in 2012, %

Age groups	Persons suspected/ Entire population	Total	Less than 10 000 €	10 000– 39 999 €	40 000 € and over	Others
Total	Persons suspected	100,0	44,6	28,4	5,9	21,1
	Entire population	100,0	18,4	60,1	17,7	3,8
15–20	Persons suspected	20,1	12,0	1,3	0,0	6,8
	Entire population	8,8	5,7	0,9	0,0	2,1
21–29	Persons suspected	29,4	13,4	8,4	0,7	7,0
	Entire population	13,5	3,9	8,4	0,8	0,4
30–39	Persons suspected	22,3	9,6	7,0	1,6	4,1
	Entire population	14,7	1,8	8,6	3,8	0,4
40–49	Persons suspected	15,4	5,8	5,5	1,9	2,2
	Entire population	15,8	1,6	8,7	5,2	0,4
50–59	Persons suspected	8,6	3,0	3,5	1,2	0,9
	Entire population	16,7	1,8	9,8	4,8	0,3
60–	Persons suspected	4,1	0,7	2,7	0,5	0,1
	Entire population	30,5	3,5	23,6	3,2	0,1

Of suspects aged 15 or over, 63 per cent have completed only basic level education and 31 per cent have completed secondary level education. The respective figures for the whole population are 32 and 40 per cent.

Viewed by main activity, suspects aged 15 or over are divided quite evenly into employed persons (27%), unemployed persons (22%) and inactive population (23%). The share of pensioners was nine per cent. Among the entire population the biggest groups are employed persons (52%) and pensioners (29%). Employed persons committed mainly rape offences (67%), dishonesty by a debtor (61%) and tax offences (51%). Unemployed persons in turn committed narcotics offences (29%) and forgeries (27%).

The publication also contains data on the suspects' socio-economic group.

In 2012, a total of 425,000 offences were recorded by the police, customs and border guard. This was 33,000 down from the year before. In addition, 435,000 cases of endangerment of traffic safety and traffic offences were recorded, which is 69,000 cases less than in the previous year.

The presentation of the statistics was revised as of the beginning of 2009. Endangerment of traffic safety and traffic offences are separated from other offences and they are presented in a separate table. The total number of offences is comparable with earlier figures, because the same division has also been made retrospectively until 1980. The aim of the revision is to improve the comparability of offences between different years and enhance their international comparability. The quality description of the statistics contains more detailed annual information about revisions but it is regrettably only published in Finnish.

From the beginning of 2009, offences recorded by the customs and border guard are also included. The change does not have much effect on the comparability of offences. Of the most common types of offences the change primarily affects the comparability of narcotics offences.

Contents

1. Review on offences recorded by the police, customs and border guard.....	6
1.1. Abstract.....	6
1.2. Offences against property	6
1.4. Drunken driving and traffic offences	9
1.5. Offences involving intoxicating substances	10
1.6. Solved offences	11
1.7. Persons suspected of offences.....	12
1.8. Foreign citizens.....	13
1.9. Victims of offences.....	14

Tables

Table 1. Selected offences against property by region per 10,000 population in 2012	8
Table 2. Selected violent offences by region per 10,000 population in 2012	9
Table 3. Clearance rate of certain types of offences in 1986–2012	12
Table 4. Suspects of solved offences by age and sex in 2003–2012	12
Table 5. Suspects of solved offences living in Finland by age and nationality in 2012	14

Appendix tables

Appendix table 1. Development of certain types of offences in 2008–2012.....	16
Appendix table 2. Development of endangerment of traffic safety and number of traffic infractions in 2008–2012.....	17
Appendix table 3. Municipal parking supervision 2012.....	18
Appendix table 4. Persons suspected of offences by nationality in 2008–2012.....	19
Appendix table 5. Persons suspected of offences and the entire population by income subject to state taxation, aged 15 years and over.....	20
Appendix table 6. Persons suspected of offences and the entire population by socio-economic status, aged 15 years and over.....	21
Appendix table 7. Persons suspected of offences and the entire population by main activity, aged 15 years and over.....	22
Appendix table 8. Persons suspected of offences and the entire population by level of education, aged 15 years and over.....	23

Figures

Figure 1. Offences by region per 10,000 population in 2012	6
Figure 2. Offences against property 2012 (In total 237,609 offences).....	7
Figure 3. Assault offences by scene in 2012 (In total 38,231 offences).....	8
Figure 4. Drunken driving offences in 1980–2012.....	10
Figure 5. Drunken driving offences by region per 10,000 population in 2012.....	10
Figure 6. Narcotics offences in 2012 (In total 20,102 offences).....	11
Figure 7. Foreign citizens suspected of offences by place of residence in 2009–2012.....	13
Figure 8. Victims of assault offences by age and sex in 2012.....	15

Appendix figures

Appendix figure 1. Persons suspected of offences and the entire population by socio-economic status, aged 15 years and over, %.....24

Appendix figure 2. Persons suspected of offences and the entire population by main activity, aged 15 years and over, %.....24

Appendix figure 3. Persons suspected of offences and the entire population by level of education, aged 15 years and over, %.....24

1. Review on offences recorded by the police, customs and border guard

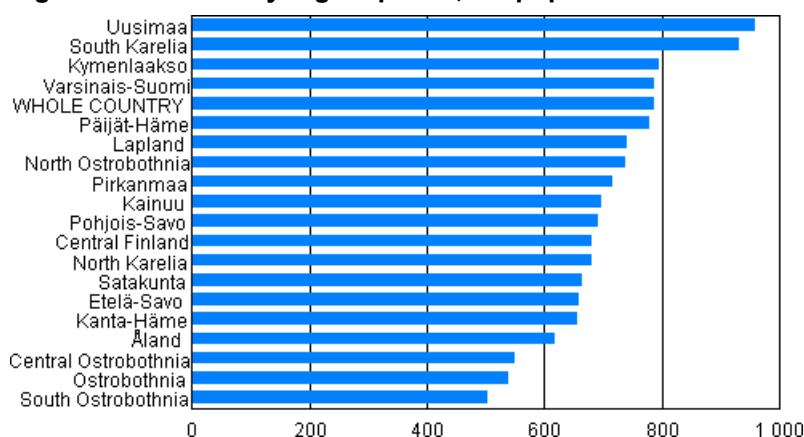
1.1. Abstract

In 2012, 425,000 offences were recorded by the police, customs and border guard in the whole country, which is seven per cent less than one year before. During ten previous years, the average number of offences recorded was 438,000 per year. Over the year, 255,000 offences were solved, while the corresponding figure was 271,000 one year previously.

The vast majority of the offences were recorded by the police. A total of 14,000 offences were recorded by the customs and border guard, 20 per cent more than one year before. One-quarter of the offences recorded by the customs and border guard were alcohol offences or minor alcohol offences and narcotics offences.

Viewed by region, the number of offences decreased from 2011 to 2012 in all regions. The offences decreased the most in relative terms in Central Ostrobothnia, by 16 per cent.

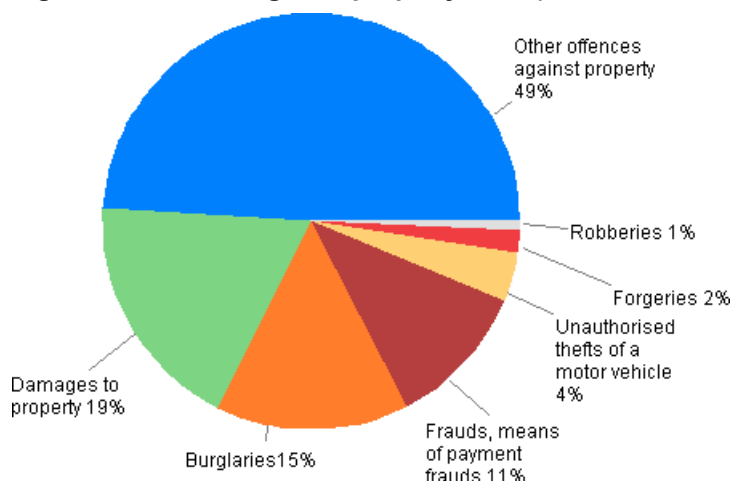
Figure 1. Offences by region per 10,000 population in 2012



1.2. Offences against property

The biggest group of the offences recorded was formed by thefts, petty thefts and aggravated thefts. In all, 139,000 of them were recorded, which is eight per cent less than one year previously. An average of 156,000 theft offences (thefts, petty thefts and aggravated thefts) were reported between 2002 and 2011. The number of thefts recorded in 2012 was 68,000, or 10 per cent less than one year before. The number of aggravated thefts recorded was 3,200. During ten previous years, 2,600 aggravated thefts, on average, were committed per year. Petty thefts numbered 68,000, which is seven per cent less than in the year before.

Figure 2. Offences against property 2012 (In total 237,609 offences)



The number of burglaries reported was 35,000, which is 4,600 cases less than in the previous year. The number of burglaries of motor vehicles recorded was 11,000, which is 22 per cent fewer than one year previously. Breaking into business premises decreased by 12 per cent. The number recorded was now 4,000. From 2002, their number has decreased by 42 per cent. The total number of break-ins into houses went down by six per cent compared with the previous year. In 2012, their number was 6,300, of which 1,500 were break-ins to cottages.

The recorded number of unauthorised uses and thefts of a motor vehicle and thefts of use of a motor vehicle was 8,800, which was approximately one-quarter less than in the year before.

In 2012, 1,200 accounting and debtor offences were recorded, which is five per cent more than in the previous year. Although the number of these offences is good one half of the record figures for 1996, their number has more than doubled from 1991.

The number of frauds was 21,000, which is 18 more than in 2011. Ten years ago, 12,000 frauds were recorded. A total of 6,200 means of payment frauds were committed, the amount has nearly doubled over the past five years.

The number of damages to property was 51,000 per year, on average, during the previous ten-year period. Now 44,000 of them were reported, which is 19 per cent less than in the previous year.

A total of 1,600 robberies were reported, which was at the same level as last year. From 2002 to 2011, the average number of robberies per year has been 1,800.

Table 1. Selected offences against property by region per 10,000 population in 2012

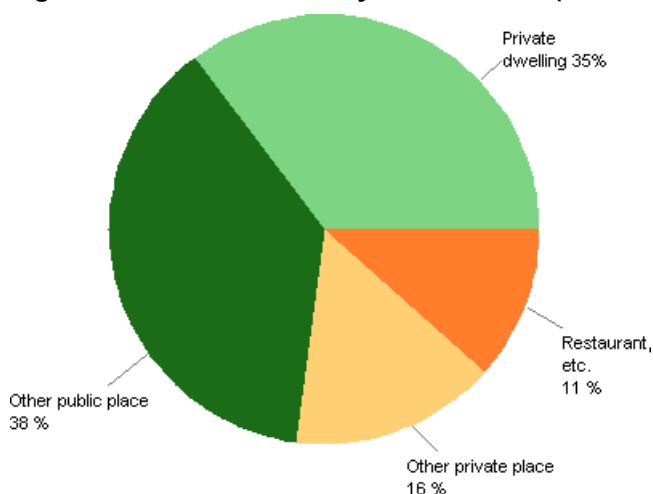
Region	Burglaries	Unauthorised thefts of a motor vehicle	Robberies	Damages to property	Embezzlements	Frauds, means of payment-frauds
WHOLE COUNTRY	649	163	30	822	61	503
Uusimaa	751	189	42	977	94	583
Varsinais-Suomi	778	279	40	706	56	508
Satakunta	722	146	19	681	44	419
Kanta-Häme	629	118	22	784	29	504
Pirkanmaa	641	142	24	918	44	481
Päijät-Häme	835	203	22	906	65	456
Kymenlaakso	656	163	19	790	44	438
South Karelia	486	138	26	830	42	333
Etelä-Savo	690	155	13	748	40	350
Pohjois-Savo	487	112	17	780	48	316
North Karelia	488	109	13	723	28	457
Central Finland	594	85	25	745	58	458
South Ostrobothnia	340	45	13	544	31	381
Ostrobothnia	433	88	9	784	20	315
Central Ostrobothnia	285	48	10	656	16	239
North Ostrobothnia	592	201	40	654	54	469
Kainuu	394	116	16	832	46	236
Lapland	537	168	27	761	52	384
Åland	497	74	0	776	95	138

1.3. Offences against the person

In 2012, a total of 38,000 assault offences were recorded, which is five per cent less than in the corresponding period of 2011. The law reform that entered into force at the beginning of 2011, increased the number of assault offences recorded in 2011. Over the period 2002 to 2011 an average of 32,000 assault offences were recorded per year. Aggravated assaults decreased by nine per cent compared to the previous year and amounted to 1,900.

Good one-third of assault offences are committed in private dwellings. In one-third of the cases, the scene of the assault is a public place outside business centres and public occasions.

Figure 3. Assault offences by scene in 2012 (In total 38,231 offences)



The recorded number of offences against life was 89. This was 25 cases less than in 2011. The annual average was 120 for the ten-year period 2002 to 2011. The corresponding figure was 143 between 1992 and 2001. The number of attempted manslaughters, murders or homicides increased from 306 to 350. The average for the previous ten-year period was 340.

In 2012, nearly two-thirds of the offences against life were committed in a private dwelling.

The number of rapes recorded was 1,009, against 1,039 in the previous year. From 2002 to 2011, an average of 710 rapes were reported. The recorded number of sexual exploitations of a child was 1,567, which is 51 per cent (526 cases) more than the annual average for the period 2002 to 2011. The numbers of rapes and sexual exploitations of a child vary much yearly. Individual reports of an offence may include a series of incidents comprising several criminal acts.

Table 2. Selected violent offences by region per 10,000 population in 2012

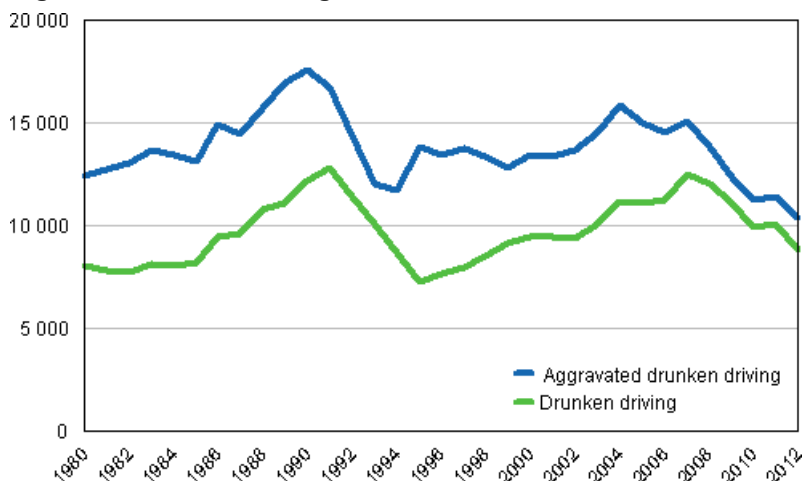
Region	Manslaughter, murder, homicide and their attempts	Assault	Aggravated assault	Petty assault	Rape offences
WHOLE COUNTRY	8	470	35	203	19
Uusimaa	9	570	29	231	21
Varsinais-Suomi	3	417	30	234	18
Satakunta	8	425	43	154	11
Kanta-Häme	9	312	34	187	20
Pirkanmaa	5	424	36	193	22
Päijät-Häme	12	418	31	188	11
Kymenlaakso	13	326	29	208	14
South Karelia	6	350	40	189	11
Etelä-Savo	8	407	38	243	17
Pohjois-Savo	11	448	36	294	17
North Karelia	14	356	37	173	16
Central Finland	7	548	44	145	20
South Ostrobothnia	11	385	34	113	13
Ostrobothnia	3	380	39	156	15
Central Ostrobothnia	13	542	29	225	16
North Ostrobothnia	8	478	35	137	21
Kainuu	10	613	50	209	20
Lapland	9	477	52	238	20
Åland	7	423	25	180	11

1.4. Drunken driving and traffic offences

Aggravated drunken driving decreased by nine per cent and other drunken driving by 12 per cent. In all, 19,000 drunken driving offences were recorded, which is 11 per cent less than in 2011. The number of drunken driving offences known to the police was at its lowest in 30 years in 2012. They have fallen by one-third from the 1990 record figures.

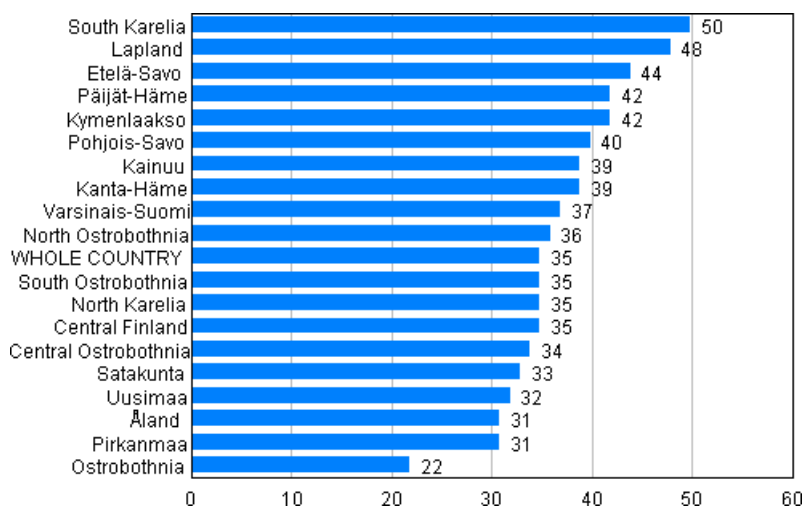
Of those suspected of drunken driving, 83 per cent had used alcohol and 14 per cent a narcotic substance as their only intoxicant. The remaining three per cent had used both.

Figure 4. Drunken driving offences in 1980–2012



In 2012, 435,000 cases of endangerment of traffic safety and traffic infractions were registered, which is 14 per cent lower than one year before. Most of them were infractions found out in connection with police surveillance and guidance. The recorded number of aggravated endangerment of traffic safety was 3,600, which is 12 per cent fewer than in 2011. The police recorded 289,000 cases of exceeding speed limits, which was 14 per cent less than in the year before.

Figure 5. Drunken driving offences by region per 10,000 population in 2012

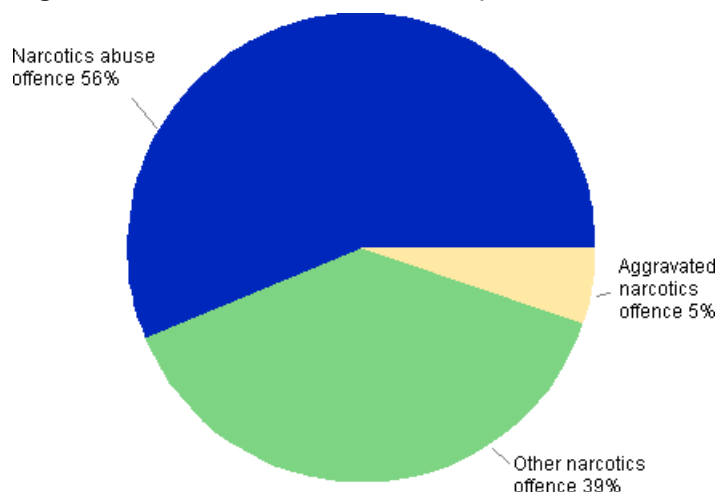


1.5. Offences involving intoxicating substances

In all, 20,000 narcotics offences were recorded in 2012, which is one per cent less than in 2011. Aggravated narcotics offences also went down by one per cent to 1,000. During the period 2002 to 2011, the average number of narcotics offences was 16,000 per year.

From 2009, the figures include the offences recorded by the customs and border guard, which increases the number of narcotics offences by about one-tenth compared with narcotics offences known to the police.

Figure 6. Narcotics offences in 2012 (In total 20,102 offences)



In all, 4,600 alcohol offences and minor alcohol offences were recorded. The number was 10 per cent lower than one year previously.

When compiling statistics on offences involving intoxicating substances, offences comprising several criminal acts are entered as one. Offences involving intoxicating substances are such that they are generally found out only as a result of the activity of only the police or customs and border guard officials and the majority of the offences remain undisclosed.

1.6. Solved offences

During 2012, the police, customs and border guard solved a total of 255,000 offences. The clearance rate was 60 per cent, which is one percentage point higher than in the previous year. The corresponding figure was 52 per cent ten years ago. The clearance rate for offences is calculated so that the offences recorded by the police in the statistical reference year and all the offences solved in that same year are compared with each other.

Thirty-eight per cent of offences against property and 78 per cent of offences against life and health were solved.

Among municipalities of over 30,000 inhabitants the clearance rate was the highest in Savonlinna and Lappeenranta, 71 and 69 per cent, respectively, while it was the lowest in Helsinki and Kaarina, 54 per cent in both.

The clearance rate varies by type of offence quite strongly. Due to the manner of disclosure, drunken driving, traffic and offences involving intoxicating substances are almost all solved. Sixty-eight per cent of frauds and 88 per cent of offences against life were solved. The clearance rate is 77 per cent for assault offences.

The clearance rates are the lowest for theft offences (theft, aggravated theft, petty theft), damages to property, means of payment frauds and unauthorised thefts of a motor vehicle. In 2012, one-sixth of thefts were solved. One-quarter of damages to property and one-fifth of means of payment frauds were cleared. One-third of unauthorised thefts of a motor vehicle were solved. Good half of robberies were solved.

Table 3. Clearance rate of certain types of offences in 1986–2012

Offence	1986–1990	1991–1995	1996–2000	2001–2005	2006–2010	2011	2012
ALL OFFENCES	65	51	51	56	61	59	60
Theft	25	17	14	15	18	17	16
Aggravated theft	39	29	40	41	38	34	38
Petty theft	78	70	67	58	57	57	56
Robbery	53	43	42	45	49	49	54
Damages to property	29	27	27	26	25	21	23
Assault	79	74	76	80	81	75	78
Aggravated assault	85	84	83	87	88	85	83
Petty assault	95	86	79	75	73	73	75
Manslaughter, murder or homicide	97	94	90	93	91	81	88
Attempted manslaughter, murder or homicide	95	91	92	94	97	91	97
Rape	63	56	57	63	66	59	128 ¹⁾

1) The clearance rate for offences is calculated so that the offences recorded by the police in the statistical reference year and all the offences solved in that same year are compared with each other. Therefore the clearance rate can be over 100.

1.7. Persons suspected of offences

In all, 284,000 persons were suspected of the 255,000 offences solved in 2012. Women made up 18 per cent of these persons.

In addition to the quantitative difference, the criminality of men and women differs in that women's shares of assaults, drunken driving and damages to property are small compared to men. However, the share of women suspected of assaults and drunken driving has doubled in 20 years. Typical crimes for women are petty thefts, embezzlements and forgeries.

Table 4. Suspects of solved offences by age and sex in 2003–2012

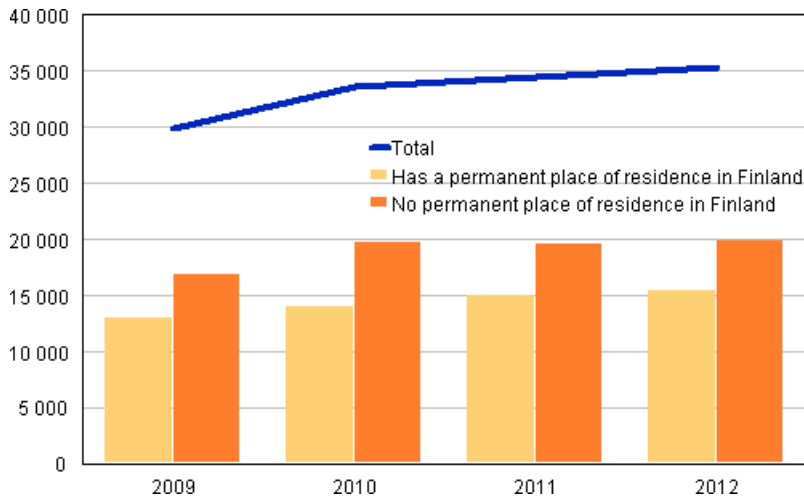
Year	Persons suspected of offences - Age									
	Males total	Females total	Males aged under 15	Females aged under 15	Males aged 15–17	Females aged 15–17	Males aged 18–20	Females aged 18–20	Males aged over 20	Females aged over 20
2003	236 391	42 097	7 600	2 590	19 033	4 127	35 161	5 300	174 597	30 080
2004	250 087	47 028	8 342	3 182	20 063	4 763	33 466	5 670	188 216	33 413
2005	250 489	46 580	7 289	3 047	22 486	4 546	31 983	5 521	188 731	33 466
2006	239 264	45 093	6 934	2 725	19 296	4 093	28 830	5 783	184 204	32 492
2007	250 303	57 847	8 347	2 749	19 783	4 077	29 702	5 433	192 471	45 588
2008	257 955	50 240	10 577	3 198	20 592	4 207	30 388	5 987	196 398	36 848
2009	247 229	51 298	8 846	3 173	19 049	4 635	27 261	5 923	192 073	37 567
2010	249 123	52 930	8 023	3 414	18 542	5 053	27 431	5 722	195 127	38 741
2011	248 787	53 975	9 091	3 640	19 359	5 230	28 224	5 943	192 113	39 162
2012	233 726	49 896	6 930	2 738	16 532	4 338	26 485	5 439	183 779	37 381

In 2012, the share of young and underage people - aged 21 or under - among all suspects was 22 per cent. The shares of young people were large for alcohol offences, robberies, damages to property and thefts of a motor vehicle. Thirty-five per cent of those suspected of robberies were young people. In damages to property the percentage was 46 and in thefts of a motor vehicle 32. The share of young people suspected of assaults was 21 per cent.

1.8. Foreign citizens

The number of persons suspected of the offences solved in 2012 by the police, customs and border guard was 284,000, of whom 35,000 were citizens of foreign countries. Compared to 2011, the number of all suspects decreased by six per cent, while the number of foreign citizens suspected increased by good two per cent. Over the past ten years, the number of foreign suspects has been 24,000, on average. In 2012, Russians made up the biggest group of foreign suspects, numbering 9,000. Only one-quarter of them reside permanently in Finland. Suspects were citizens of 149 different countries.

Figure 7. Foreign citizens suspected of offences by place of residence in 2009–2012



Among the offences solved in 2012, 44 per cent of the suspected foreign citizens were living permanently in Finland. The respective proportion has remained almost unchanged over the past few years. Foreign suspects living in Finland were slightly younger than Finnish suspects were. Their average age was 31 years, while that of Finnish suspects was 32 years. Typical offences by foreigners living in Finland were theft, assault and drunken driving offences, as well as driving a motor vehicle without a license.

In the statistics, the same person can be a suspect several times. Data on the nationality of suspects and on whether they are permanently resident in Finland or not are based on the nationality data derived from the police and those selected by means of the personal identity code from the population data. The group "no permanent place of residence in Finland" is in that sense problematic, because it may include persons staying longer periods in Finland without applying for a permanent place of residence here. The group may also include persons suspected of a narcotics offence, for example, who have come to Finland only for the purpose of committing a crime.

Table 5. Suspects of solved offences living in Finland by age and nationality in 2012

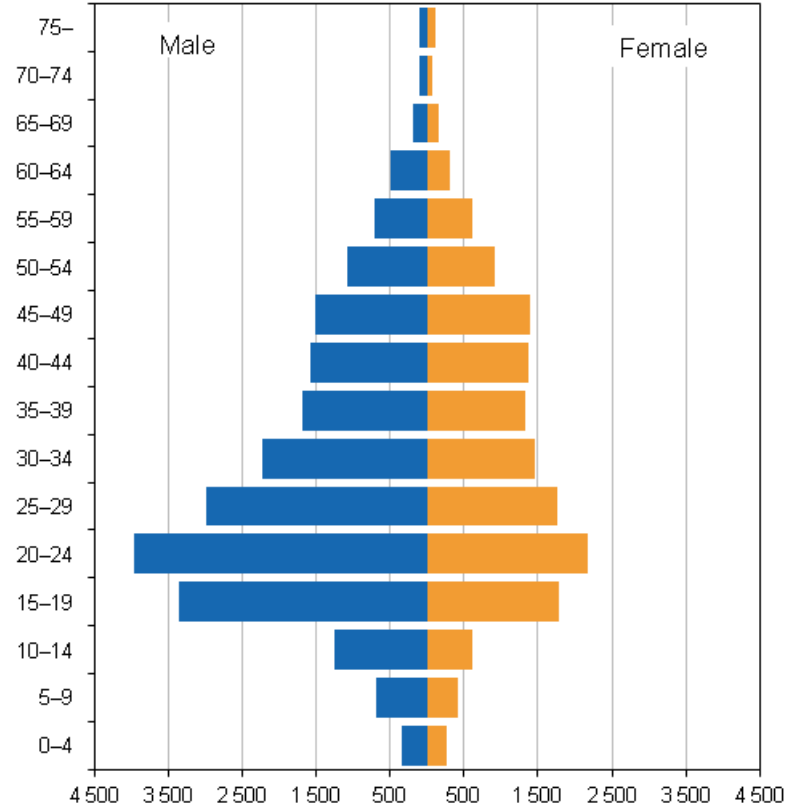
Age groups	Suspects living permanently in Finland		Share per 1,000 population in the age group	
	Finnish residents	Foreign citizens	Finnish residents	Foreign citizens
Total	245 870	15 418	47	79
–14	8 756	517	10	18
15–17	19 657	882	108	180
18–20	29 348	1 459	105	244
21–24	33 009	2 280	128	176
25–29	35 960	2 825	114	105
30–34	29 275	2 235	92	80
35–39	22 586	1 794	73	80
40–49	36 242	2 505	54	77
50–59	20 945	709	29	38
60–69	7 946	152	11	19
70–	2 146	60	3	10

1.9. Victims of offences

Victims of the assault offences recorded by the police in 2012 numbered 37,000, which is six per cent less than one year earlier. Of the victims, 22,000 (60 per cent) were men and 15,000 (40 per cent) women. The number of male victims was seven per cent and that of female ones five per cent lower than in 2011. The typical age of victims of assault is 18. This age group contained 1,500 (4 per cent) of all victims. In all, 4,800 of those aged 50 or over (13 per cent) were victims of assaults.

Assaults of children aged under 18 decreased by three per cent in 2012 from the year before. Now, there were 5,900 child victims compared with 6,100 in 2011. This is 16 per cent of all victims of assaults. Among child victims, 3,800 (64 per cent) were boys and 2,100 girls (36 per cent). Seventeen per cent of the children belonged to the age group of those aged 0 to 6, 44 per cent to those aged 7 to 14, and 39 per cent to those aged 15 to 17.

Figure 8. Victims of assault offences by age and sex in 2012



Appendix tables

Appendix table 1. Development of certain types of offences in 2008–2012

	2008	2009 ²⁾	2010 ²⁾	2011 ²⁾	2012 ²⁾
ALL OFFENCES ¹⁾	440 711	441 416	431 623	458 251	425 421
A Offences against property	256 667	255 619	247 299	259 771	237 609
Burglaries total	40 777	40 715	38 555	39 704	35 046
- from a dwelling	5 978	6 497	6 453	6 672	6 281
- from a free-time residence	1 588	1 675	1 537	1 825	1 478
- from another dwelling	4 390	4 822	4 916	4 847	4 803
- from business premises	4 407	4 477	4 091	4 537	4 001
- from a motor vehicle	16 143	15 032	13 526	13 853	10 738
- other theft through unlawful breaking into	14 249	14 709	14 485	14 642	14 026
Unauthorised uses and thefts of a motor vehicle, thefts of use of a motor vehicle, total	13 804	12 188	11 150	11 983	8 815
- unauthorised theft of a motor vehicle	1 645	1 574	1 438	1 574	1 146
- unauthorised use of a motor vehicle	1 086	1 000	924	945	846
- aggravated unauthorised use of a motor vehicle	1	3	2	–	2
- theft of use of a motor vehicle	11 017	9 568	8 749	9 443	6 802
- aggravated theft of use of a motor vehicle	55	43	37	21	19
Robberies total	1 696	1 640	1 508	1 622	1 616
- aggravated robbery	180	212	156	208	218
Damages to property total	56 566	50 709	49 160	54 970	44 417
- aggravated damage to property	253	212	243	227	239
Embezzlements total	3 436	3 182	3 303	3 229	3 272
- aggravated embezzlement	260	270	331	291	374
Frauds total	16 052	17 422	15 860	17 794	20 946
- aggravated fraud	953	987	957	1 149	1 052
B Crimes against life and health	37 613	35 753	35 715	42 919	40 853
Manslaughter, murder or homicide	132	114	110	114	89
Attempted manslaughter, murder or homicide	363	366	308	306	350
Assaults total	34 803	32 895	33 082	40 171	38 231
- aggravated assault	2 256	2 105	1 996	2 053	1 874
C Sexual offences	2 906	2 205	2 417	3 252	3 511
Sexual exploitation of a child	1 321	1 068	1 102	1 682	1 567
Rape	915	660	818	1 039	1 009
D Crimes against public authority and public peace	14 521	14 053	13 566	14 417	14 361
(Violent) resisting of an official in the performance of his duties	1 935	1 711	1 682	1 947	1 852
- of which against the police	1 722	1 592	1 503	1 766	1 678
Impeding an official	2 466	2 260	2 161	2 310	2 183
- of which against the police	2 413	2 194	2 109	2 268	2 130
E Certain traffic offences	61 070	56 833	53 423	54 098	48 005
Drunken driving total	25 819	23 350	21 130	21 459	19 134
- aggravated drunken driving	13 783	12 294	11 242	11 409	10 333
F Other offences	67 934	76 953	79 203	83 794	81 082
Narcotics offences total	15 482	18 524	19 724	20 394	20 102
- aggravated narcotics offence	789	922	1 083	1 036	1 025
Alcohol offence/Minor alcohol offence	3 081	2 987	4 053	5 121	4 601

- 1) Excl. endangerment of traffic safety, hit-and-run, traffic infraction, violation of social welfare legislation on road traffic and motor vehicle infraction.
- 2) The figures for 2009 to 2012 also include offences recorded by the customs and border guard.

Appendix table 2. Development of endangerment of traffic safety and number of traffic infractions in 2008–2012

	2008	2009	2010	2011	2012
Endangerment of traffic safety, hit-and-run, traffic infraction, violation of social welfare legislation on road traffic and motor vehicle infraction.	435 466	488 867	503 986	504 578	435 271
- exceeding speed limits ¹⁾	262 812	322 896	335 559	334 267	288 904

1) Exceeding speed limits registered as endangerment of traffic safety, aggravated endangerment of traffic safety and traffic infractions.

Appendix table 3. Municipal parking supervision 2012

Corrected on 22 January 2014. The corrections are indicated in red.

City	Requests to pay	Of which issued by the police	Payment orders	Payment orders sent for execution	Payment orders sent for removal and storage costs
TOTAL	719 736	11 149	182 479	75 240	30
Espoo	30 811	645	7 923	6 524	-
Helsinki	211 080	2 773	45 876	19 757	-
Hyvinkää	11 143	30	1 961	503	-
Hämeenlinna	11 817	366	3 103	1 235	-
Iisalmi	4 260	-	1 273	449	-
Imatra	2 598	33	396	110	7
Joensuu	15 808	166	3 945	4 152	-
Jyväskylä	26 195	116	6 484	3 094	-
Järvenpää	6 436	6	1 798	597	-
Kajaani	4 901	33	1 416	389	-
Kangasala	5 837	314	1 008	195	-
Kerava	3 974	10	1 408	524	-
Kokkola	16 585	2	4 725	786	-
Kotka	8 448	30	1 550	664	-
Kouvola	13 701	31	2 939	825	-
Kuopio	23 935	123	5 988	2 631	-
Lahti	19 146	153	6 050	2 714	-
Lappeenranta	11 326	66	1 779	754	-
Lohja	6 446	13	1 831	367	-
Maarianhamina	4 840	24	-	-	-
Mikkeli	14 872	264	2 935	634	-
Naantali	1 622	77	418	158	-
Nokia	3 660	1	918	276	-
Oulu	22 353	315	5 518	2 263	-
Pietarsaari	3 910	-	215	-	-
Pori	18 968	69	4 902	2 167	-
Porvoo	14 993	114	4 428	1 524	-
Raisio	406	31	-	-	-
Rauma	9 218	43	1 826	399	-
Riihimäki	6 467	16	1 267	624	-
Rovaniemi	13 081	219	3 234	1 169	-
Savonlinna	4 676	73	1 041	323	-
Seinäjoki	8 307	15	2 313	693	-
Siilinjärvi	5 578	-	986	353	-
Tampere	59 518	292	19 045	6 317	-
Tornio	3 280	13	548	140	-
Turku	35 649	3 465	14 513	3 185	23
Vaasa	17 077	85	4 993	1 672	-
Vantaa	34 339	1 114	11 300	6 873	-
Varkaus	2 475	9	626	200	-

Appendix table 4. Persons suspected of offences by nationality in 2008–2012

Offence	Year	PERSONS SUSPECTED OF OFFENCES						
		Total	Finnish citizens	Citizens of foreign countries	Estonia	Russia/Former Soviet Union	Sweden	Citizens of other foreign countries
All offences	2008	308 195	284 508	23 687	5 720	3 067	1 817	13 083
	2009	298 527	268 578	29 949	6 399	5 957	1 825	15 768
	2010	302 053	268 422	33 631	8 541	6 352	1 671	17 067
	2011	302 762	268 247	34 515	9 072	7 052	1 420	16 971
	2012	283 622	248 321	35 301	8 402	9 034	1 440	16 425
Theft offences	2008	67 286	60 258	7 028	1 461	864	333	4 370
	2009	67 521	58 984	8 537	2 151	986	358	5 042
	2010	68 646	58 848	9 798	2 693	1 098	420	5 587
	2011	67 386	58 340	9 046	2 658	1 152	267	4 969
	2012	60 112	52 034	8 078	2 074	1 180	276	4 548
Robbery offences	2008	1 486	1 308	178	37	9	27	105
	2009	1 543	1 375	168	30	9	15	114
	2010	1 330	1 152	178	30	13	11	124
	2011	1 403	1 207	196	25	10	10	161
	2012	1 452	1 303	149	31	14	10	94
Assault offences	2008	32 710	29 846	2 864	487	323	156	1 898
	2009	29 439	26 811	2 628	450	282	153	1 743
	2010	29 027	26 192	2 835	546	244	148	1 897
	2011	33 174	29 499	3 675	687	336	141	2 511
	2012	32 237	28 538	3 699	740	361	123	2 475
Rape offences	2008	641	540	101	10	7	4	80
	2009	512	367	145	4	6	2	133
	2010	574	314	260	11	5	4	240
	2011	644	474	170	15	3	3	149
	2012	1 341	1 128	213	15	12	7	179
Drunken driving offences	2008	27 000	24 604	2 396	1 171	433	164	628
	2009	23 161	21 164	1 997	917	359	163	558
	2010	21 437	19 300	2 137	1 192	357	103	485
	2011	21 153	18 599	2 554	1 484	409	105	556
	2012	19 065	16 645	2 420	1 360	390	107	563
Narcotics offences	2008	16 388	15 599	789	133	164	131	361
	2009	17 425	16 158	1 267	218	169	132	748
	2010	20 403	18 973	1 430	293	212	94	831
	2011	19 292	17 880	1 412	284	212	111	805
	2012	19 119	17 689	1 430	231	242	102	855

Appendix table 5. Persons suspected of offences and the entire population by income subject to state taxation, aged 15 years and over

Offences ¹⁾		Total ²⁾	1 - 1 999	2 000 - 4 999	5 000 - 9 999	10 000 - 19 999	20 000 - 39 999	40 000 - 79 999	80 000-	Other
ALL OFFENCES	Persons suspected	256 929	31 787	25 804	56 935	35 559	37 458	12 398	2 750	54 238
	%	100,0	12,4	10,0	22,2	13,8	14,6	4,8	1,1	21,1
Theft offences	Persons suspected	50 643	7 764	6 064	13 067	4 810	2 772	497	43	15 626
	%	100,0	15,3	12,0	25,8	9,5	5,5	1,0	0,1	30,9
Robbery offences	Persons suspected	1 341	304	166	287	103	63	5	0	413
	%	100,0	22,7	12,4	21,4	7,7	4,7	0,4	0,0	30,8
Embezzlement offences	Persons suspected	1 480	111	92	269	317	354	110	31	196
	%	100,0	7,5	6,2	18,2	21,4	23,9	7,4	2,1	13,2
Frauds, means of payment frauds	Persons suspected	18 102	2 192	2 063	4 502	2 777	1 747	441	87	4 293
	%	100,0	12,1	11,4	24,9	15,3	9,7	2,4	0,5	23,7
Tax offences	Persons suspected	1 168	62	48	225	200	259	148	61	165
	%	100,0	5,3	4,1	19,3	17,1	22,2	12,7	5,2	14,1
Forgery offences	Persons suspected	3 734	313	345	1 046	390	444	164	26	1 006
	%	100,0	8,4	9,2	28,0	10,4	11,9	4,4	0,7	26,9
Dishonesty by a debtor	Persons suspected	664	36	34	90	96	166	92	47	103
	%	100,0	5,4	5,1	13,6	14,5	25,0	13,9	7,1	15,5
Homicides and attempts thereof	Persons suspected	447	27	47	153	53	43	17	4	103
	%	100,0	6,0	10,5	34,2	11,9	9,6	3,8	0,9	23,0
Assault offences	Persons suspected	30 632	3 025	2 849	6 558	5 026	6 696	2 166	240	4 072
	%	100,0	9,9	9,3	21,4	16,4	21,9	7,1	0,8	13,3
Rape offences	Persons suspected	1 299	68	66	147	144	709	47	24	94
	%	100,0	5,2	5,1	11,3	11,1	54,6	3,6	1,8	7,2
Drunken driving	Persons suspected	18 254	1 472	1 450	3 632	3 434	4 156	1 345	176	2 589
	%	100,0	8,1	7,9	19,9	18,8	22,8	7,4	1,0	14,2
Narcotics offences	Persons suspected	18 488	2 701	2 435	4 753	2 273	1 549	237	24	4 516
	%	100,0	14,6	13,2	25,7	12,3	8,4	1,3	0,1	24,4
ENTIRE POPULATION	Persons suspected	4 512 285	177 331	151 615	499 767	1 100 704	1 611 849	687 855	112 337	170 827
	%	100,0	3,9	3,4	11,1	24,4	35,7	15,2	2,5	3,8

1) Excl. endangerment of traffic safety, hit-and-run, traffic infraction, violation of social welfare legislation on road traffic and motor vehicle infraction.

2) The data in appendix tables 5-8 differ due to the sampling times of the background data. Not all population data is available for all persons suspected of offences. The population data of appendix table 6 depicting socio-economic status are from 2010. In the other appendix tables the population data are from 2011.

Appendix table 6. Persons suspected of offences and the entire population by socio-economic status, aged 15 years and over

Offences ¹⁾		Total ²⁾	Self-employed persons	Lower and upper-level employees	Workers	Students	Pensioners	Other, unknown
ALL OFFENCES	Persons suspected	256 929	12 736	27 038	41 432	43 357	24 590	107 776
	%	100,0	5,0	10,5	16,1	16,9	9,6	41,9
Theft offences	Persons suspected	50 643	712	3 057	4 164	8 828	6 290	27 592
	%	100,0	1,4	6,0	8,2	17,4	12,4	54,5
Robbery offences	Persons suspected	1 341	26	75	132	289	115	704
	%	100,0	1,9	5,6	9,8	21,6	8,6	52,5
Embezzlement offences	Persons suspected	1 480	161	347	237	145	148	442
	%	100,0	10,9	23,4	16,0	9,8	10,0	29,9
Frauds, means of payment frauds	Persons suspected	18 102	678	1 736	2 313	3 143	1 747	8 485
	%	100,0	3,7	9,6	12,8	17,4	9,7	46,9
Tax offences	Persons suspected	1 168	209	182	208	42	136	391
	%	100,0	17,9	15,6	17,8	3,6	11,6	33,5
Forgery offences	Persons suspected	3 734	139	494	419	469	249	1 964
	%	100,0	3,7	13,2	11,2	12,6	6,7	52,6
Dishonesty by a debtor	Persons suspected	664	163	149	107	19	41	185
	%	100,0	24,5	22,4	16,1	2,9	6,2	27,9
Homicides and attempts thereof	Persons suspected	447	13	30	62	73	71	198
	%	100,0	2,9	6,7	13,9	16,3	15,9	44,3
Assault offences	Persons suspected	30 632	1 594	3 539	7 054	4 898	2 577	10 970
	%	100,0	5,2	11,6	23,0	16,0	8,4	35,8
Rape offences	Persons suspected	1 299	74	74	721	113	54	263
	%	100,0	5,7	5,7	55,5	8,7	4,2	20,2
Drunken driving	Persons suspected	18 254	1 037	2 137	3 938	2 289	2 036	6 817
	%	100,0	5,7	11,7	21,6	12,5	11,2	37,3
Narcotics offences	Persons suspected	18 488	404	1 419	2 491	3 746	976	9 452
	%	100,0	2,2	7,7	13,5	20,3	5,3	51,1
ENTIRE POPULATION	Persons suspected	4 512 285	255 245	1 413 551	750 838	423 491	1 247 413	421 747
	%	100,0	5,7	31,3	16,6	9,4	27,6	9,3

1) Excl. endangerment of traffic safety, hit-and-run, traffic infraction, violation of social welfare legislation on road traffic and motor vehicle infraction.

2) The data in appendix tables 5-8 differ due to the sampling times of the background data. Not all population data is available for all persons suspected of offences. The population data of appendix table 6 depicting socio-economic status are from 2010. In the other appendix tables the population data are from 2011.

Appendix table 7. Persons suspected of offences and the entire population by main activity, aged 15 years and over

Offences ¹⁾		Total ²⁾	Employed	Unemployed	Students	Pensioners	Other inactive population
ALL OFFENCES	Persons suspected	256 929	68 979	57 486	50 190	21 722	58 552
	%	100,0	26,8	22,4	19,5	8,5	22,8
Theft offences	Persons suspected	50 643	5 291	13 392	10 199	5 495	16 266
	%	100,0	10,4	26,4	20,1	10,9	32,1
Robbery offences	Persons suspected	1 341	156	340	339	62	444
	%	100,0	11,6	25,4	25,3	4,6	33,1
Embezzlement offences	Persons suspected	1 480	716	246	165	126	227
	%	100,0	48,4	16,6	11,1	8,5	15,3
Frauds, means of payment frauds	Persons suspected	18 102	4 274	4 526	3 123	1 526	4 653
	%	100,0	23,6	25,0	17,3	8,4	25,7
Tax offences	Persons suspected	1 168	591	209	40	129	199
	%	100,0	50,6	17,9	3,4	11,0	17,0
Forgery offences	Persons suspected	3 734	800	1 018	530	205	1 181
	%	100,0	21,4	27,3	14,2	5,5	31,6
Dishonesty by a debtor	Persons suspected	664	404	82	18	36	124
	%	100,0	60,8	12,3	2,7	5,4	18,7
Homicides and attempts thereof	Persons suspected	447	91	101	81	65	109
	%	100,0	20,4	22,6	18,1	14,5	24,4
Assault offences	Persons suspected	30 632	11 109	6 611	5 501	2 299	5 112
	%	100,0	36,3	21,6	18,0	7,5	16,7
Rape offences	Persons suspected	1 299	865	140	119	47	128
	%	100,0	66,6	10,8	9,2	3,6	9,9
Drunken driving	Persons suspected	18 254	6 548	3 920	2 506	1 872	3 408
	%	100,0	35,9	21,5	13,7	10,3	18,7
Narcotics offences	Persons suspected	18 488	3 436	5 333	3 980	771	4 968
	%	100,0	18,6	28,8	21,5	4,2	26,9
ENTIRE POPULATION	Persons suspected	4 512 285	2 354 422	256 742	412 429	1 297 126	191 566
	%	100,0	52,2	5,7	9,1	28,7	4,2

1) Excl. endangerment of traffic safety, hit-and-run, traffic infraction, violation of social welfare legislation on road traffic and motor vehicle infraction.

2) The data in appendix tables 5-8 differ due to the sampling times of the background data. Not all population data is available for all persons suspected of offences. The population data of appendix table 6 depicting socio-economic status are from 2010. In the other appendix tables the population data are from 2011.

Appendix table 8. Persons suspected of offences and the entire population by level of education, aged 15 years and over

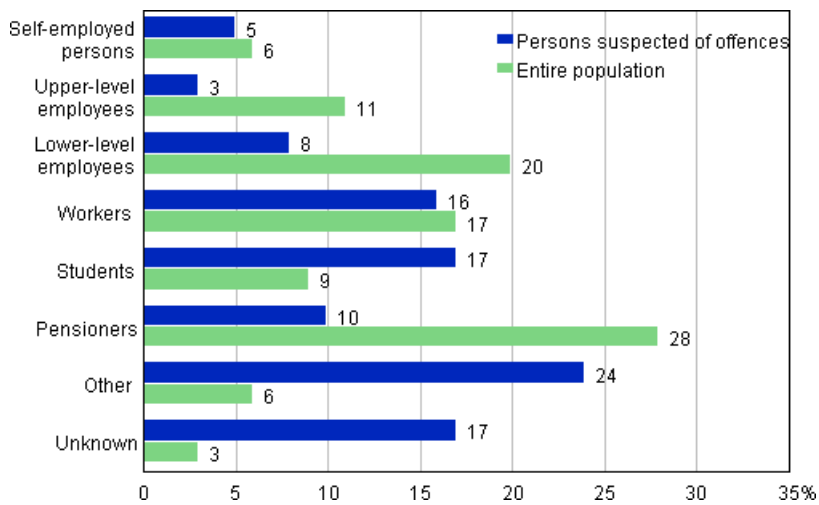
Offences ¹⁾		Total ²⁾	Primary education	Upper secondary level education	Lowest level tertiary education	Tertiary level education
ALL OFFENCES	Persons suspected	256 927	160 838	79 581	7 156	9 352
	%	100,0	62,6	31,0	2,8	3,6
Theft offences	Persons suspected	50 643	37 573	11 545	695	830
	%	100,0	74,2	22,8	1,4	1,6
Robbery offences	Persons suspected	1 341	1 096	239	3	3
	%	100,0	81,7	17,8	0,2	0,2
Embezzlement offences	Persons suspected	1 480	708	542	135	95
	%	100,0	47,8	36,6	9,1	6,4
Frauds, means of payment frauds	Persons suspected	18 102	12 351	4 861	469	421
	%	100,0	68,2	26,9	2,6	2,3
Tax offences	Persons suspected	1 168	543	467	91	67
	%	100,0	46,5	40,0	7,8	5,7
Forgery offences	Persons suspected	3 734	2 223	1 129	142	240
	%	100,0	59,5	30,2	3,8	6,4
Dishonesty by a debtor	Persons suspected	664	237	284	73	70
	%	100,0	35,7	42,8	11,0	10,5
Homicides and attempts thereof	Persons suspected	447	287	141	9	10
	%	100,0	64,2	31,5	2,0	2,2
Assault offences	Persons suspected	30 632	16 978	11 412	922	1 320
	%	100,0	55,4	37,3	3,0	4,3
Rape offences	Persons suspected	1 299	988	257	12	42
	%	100,0	76,1	19,8	0,9	3,2
Drunken driving	Persons suspected	18 254	9 510	7 080	822	842
	%	100,0	52,1	38,8	4,5	4,6
Narcotics offences	Persons suspected	18 488	12 285	5 830	121	252
	%	100,0	66,4	31,5	0,7	1,4
ENTIRE POPULATION	Persons suspected	4 512 285	1 455 959	1 783 389	467 164	805 773
	%	100,0	32,3	39,5	10,4	17,9

1) Excl. endangerment of traffic safety, hit-and-run, traffic infraction, violation of social welfare legislation on road traffic and motor vehicle infraction.

2) The data in appendix tables 5-8 differ due to the sampling times of the background data. Not all population data is available for all persons suspected of offences. The population data of appendix table 6 depicting socio-economic status are from 2010. In the other appendix tables the population data are from 2011.

Appendix figures

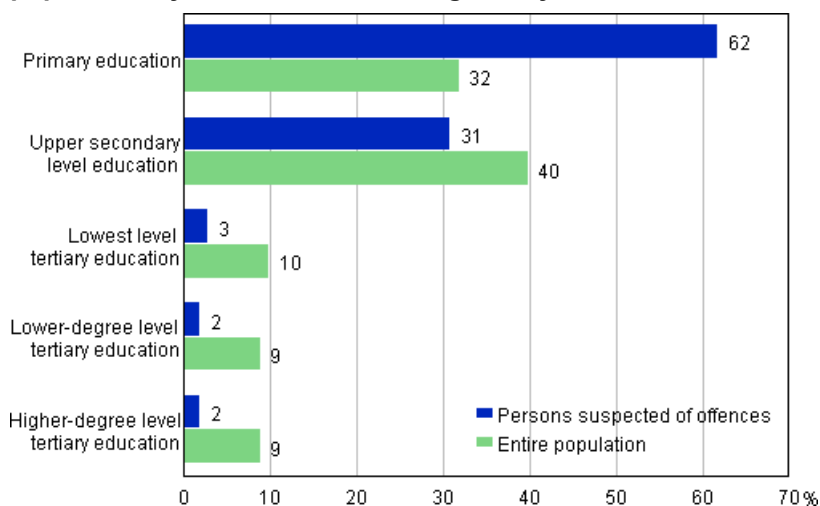
Appendix figure 1. Persons suspected of offences and the entire population by socio-economic status, aged 15 years and over, %



Appendix figure 2. Persons suspected of offences and the entire population by main activity, aged 15 years and over, %



Appendix figure 3. Persons suspected of offences and the entire population by level of education, aged 15 years and over, %



Inquiries

Kimmo Haapakangas 09 1734 3252

Director in charge:

Riitta Harala

rikos@stat.fi

http://tilastokeskus.fi/til/polrik/index_en.html

Source: Offences known to the police 2012. Statistics Finland