

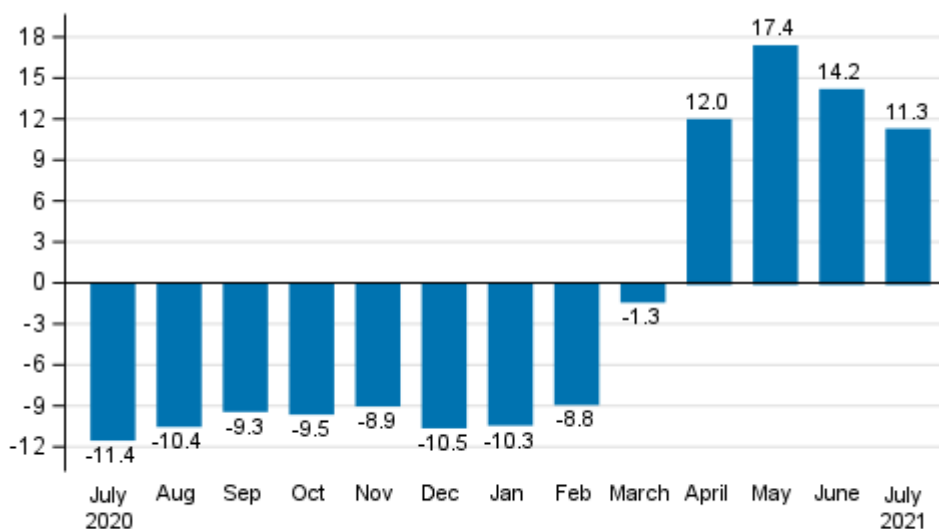
# Turnover in service industries

2021, July

## Preliminary data: Turnover in services grew in July

According to Statistics Finland's preliminary data, the working day adjusted turnover in service industries grew by 11.3 per cent in July 2021 compared with July 2020. The development was partly due to the exceptional situation caused by the coronavirus one year earlier. Services are here examined exclusive of trade.

### Annual change in working day adjusted turnover of service industries, %

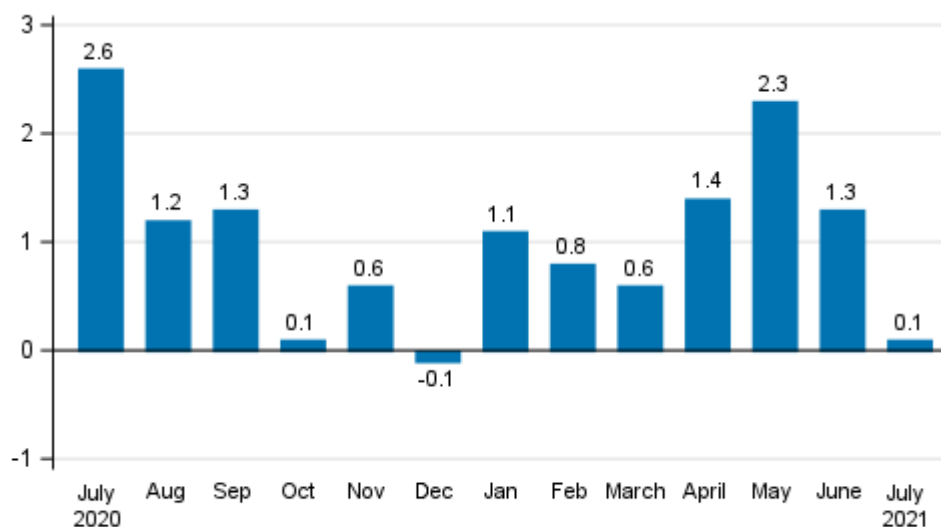


Source: Statistics Finland

## Turnover remained growing

According to the preliminary data the seasonally adjusted turnover in service industries grew in July 2021 by 0.1 per cent compared to June. In June, seasonally adjusted turnover grew by 1.3 per cent, while in May, turnover was 2.3 per cent higher than in the month before.

**Change in seasonally adjusted turnover from the previous month of service industries, %**



Source: Statistics Finland

The data for the latest month are preliminary and are released at a delay of around four weeks. The data may become significantly revised in coming months.

The factors caused by the variation in the number of weekdays are taken into account in adjustment for working days. This means taking into consideration the lengths of months, different weekdays and holidays. In addition, seasonal variation is eliminated from seasonally adjusted series, on account of which it makes sense to compare observations of two successive months as well.

# Contents

## Tables

### Appendix tables

Appendix table 1. Annual change in working day adjusted turnover in services.....4

## Figures

### Appendix figures

Appendix figure 1. Turnover of service industries, trend series.....5

Revisions in these statistics.....6

# Appendix tables

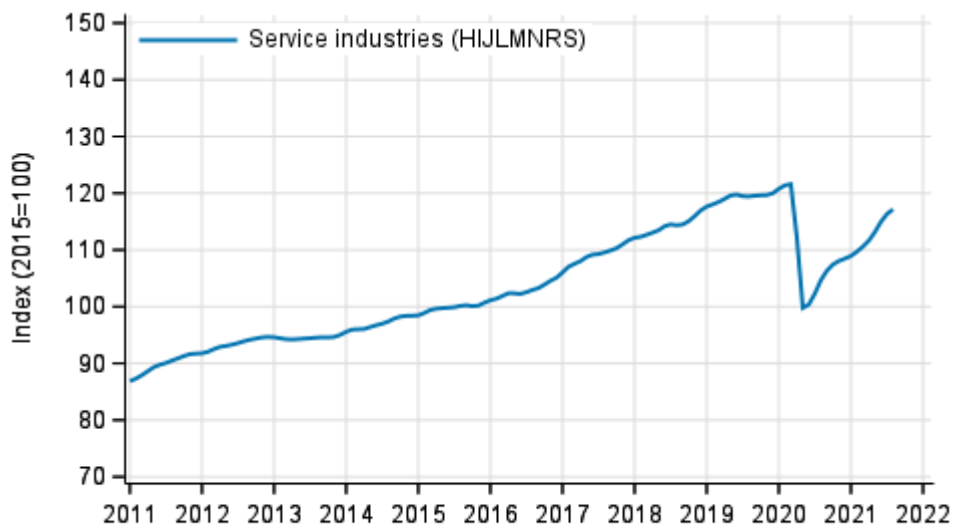
**Appendix table 1. Annual change in working day adjusted turnover in services**

Year-on-year change by three-month period, % <sup>1)</sup>				Cumulative year-on-year change, % <sup>1)</sup>	Year-on-year change in the latest month, % <sup>1)</sup>
08-10/2020	11/2020-01/2021	02-04/2021	05-07/2021	01-07/2021	07/2021
-9.7	-9.9	0.2	14.3	4.4	11.3

1) Year-on-year change compares the value for an examined time period to the value for the corresponding time period twelve months back.

# Appendix figures

**Appendix figure 1. Turnover of service industries, trend series**



Source: Statistics Finland

## Revisions in these statistics

The data of the statistics have become revised according to the table below. For more information about data revisions, see Section 3 of the quality description (only in Finnish).

### Revision to annual changes in working day adjusted turnover in services<sup>1)</sup>

Time of publishing		2021			
		02	03	04	05
HIJLMNRS Other service activities total	Preliminary data, %	-9.4	-3.7	12.2	15.8
	1st release, %	-8.4	-3.8	12.2	17.0
	Latest release (2021-08-31), %	-8.8	-1.2	12.0	17.4
	Revision, percentage point	0.6	2.5	-0.2	1.6

1) The revision describes the difference of annual change percentages between the preliminary data and the latest release.

## Inquiries

Aki Niskanen 029 551 2657

Katja Liukkonen 029 551 3515

Head of Department in  
charge:

Katri Kaaja

[myynti.palvelut@stat.fi](mailto:myynti.palvelut@stat.fi)

[www.stat.fi](http://www.stat.fi)

Source: Turnover of service industries, Statistics Finland