

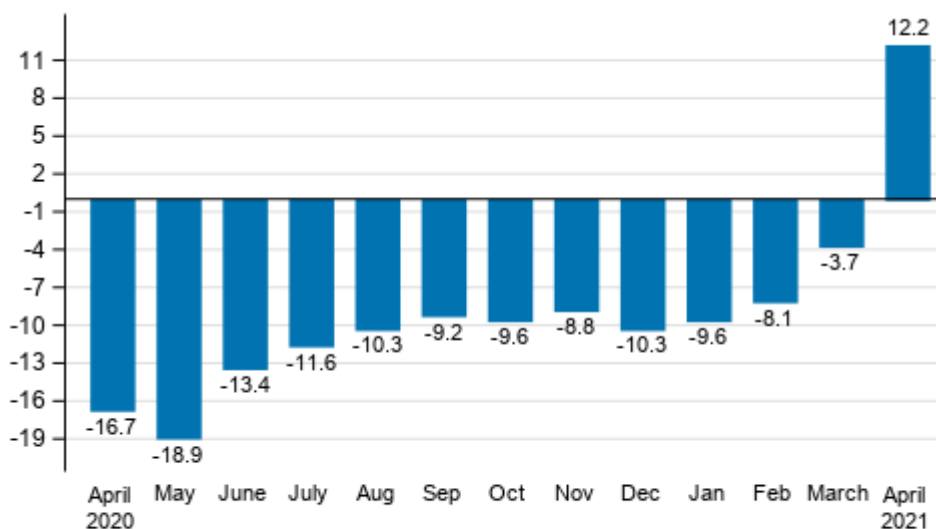
Turnover in service industries

2021, April

Preliminary data: Turnover in services grew in April

According to Statistics Finland's preliminary data, the working day adjusted turnover in service industries grew by 12.2 per cent in April 2021 compared with April 2020. The development was partly due to the exceptional situation caused by the coronavirus one year earlier. Services are here examined exclusive of trade.

Annual change in working day adjusted turnover of service industries, %

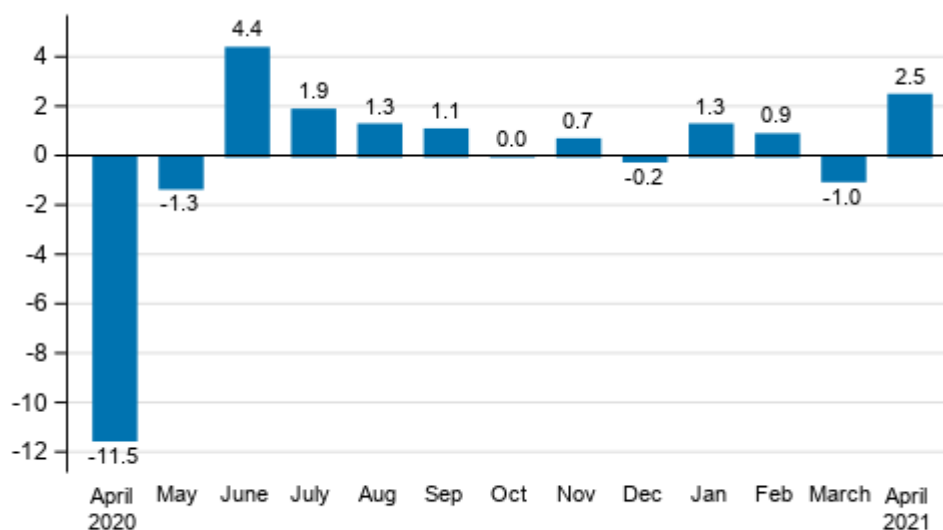


Source: Statistics Finland

Turnover grew compared with the previous month

According to the preliminary data the seasonally adjusted turnover in service industries grew in April 2021 by 2.5 per cent compared to March. In March, seasonally adjusted turnover declined by 1.0 per cent, while in February, turnover was 0.9 per cent higher than in the month before.

Change in seasonally adjusted turnover from the previous month of service industries, %



Source: Statistics Finland

The data for the latest month are preliminary and are released at a delay of around four weeks. The data may become significantly revised in coming months.

The factors caused by the variation in the number of weekdays are taken into account in adjustment for working days. This means taking into consideration the lengths of months, different weekdays and holidays. In addition, seasonal variation is eliminated from seasonally adjusted series, on account of which it makes sense to compare observations of two successive months as well.

Contents

Tables

Appendix tables

| | |
|---|---|
| Appendix table 1. Annual change in working day adjusted turnover in services..... | 4 |
|---|---|

Figures

Appendix figures

| | |
|--|---|
| Appendix figure 1. Turnover of service industries, trend series..... | 5 |
|--|---|

Appendix tables

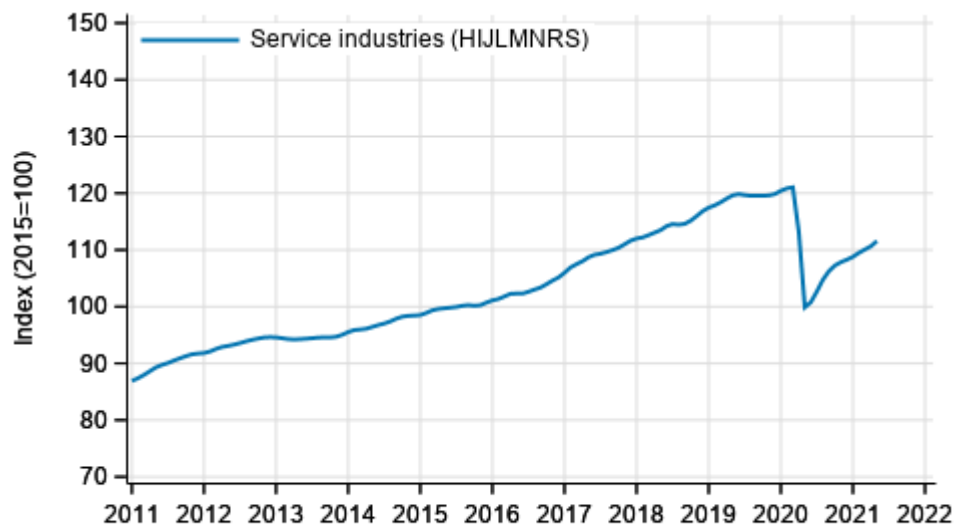
Appendix table 1. Annual change in working day adjusted turnover in services

| Year-on-year change by three-month period, % ¹⁾ | | | | Cumulative year-on-year change, % ¹⁾ | Year-on-year change in the latest month, % ¹⁾ |
|--|------------|-----------------|------------|---|--|
| 05-07/2020 | 08-10/2020 | 11/2020-01/2021 | 02-04/2021 | 01-04/2021 | 04/2021 |
| -14.7 | -9.7 | -9.6 | -0.4 | -2.8 | 12.2 |

1) Year-on-year change compares the value for an examined time period to the value for the corresponding time period twelve months back.

Appendix figures

Appendix figure 1. Turnover of service industries, trend series



Source: Statistics Finland

Inquiries

Aki Niskanen 029 551 2657
Katja Liukkonen 029 551 3515
Head of Department in
charge:
Katri Kaaja

palvelut.suhdanne@stat.fi
www.stat.fi

Source: Turnover of service industries, Statistics Finland