

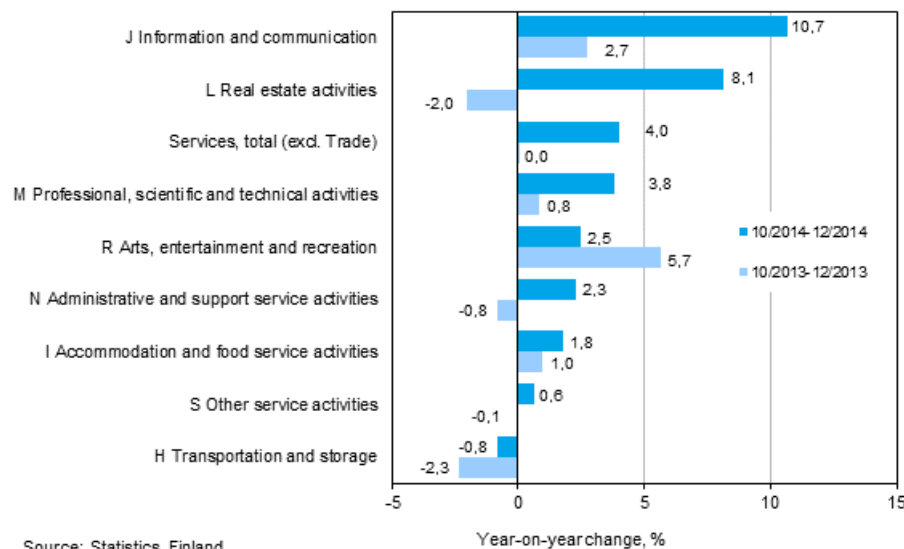
# Turnover in service industries

2014, December

## Turnover in service industries grew by 4.0 per cent year-on-year in October to December

According to Statistics Finland, turnover in service industries grew by 4.0 per cent in October to December from the corresponding time period of the year before. One year ago in the same time period, the turnover change was close to zero. Services are here examined exclusive of trade.

### Three months' year-on-year change in turnover in services (TOL 2008)



Nearly all main service industries grew in the last quarter of 2014. Only the turnover of transportation and storage decreased by 0.8 per cent from October to December 2013. The growth was still fastest in the main industry of information and communication, where turnover grew by nearly 11 per cent in the last quarter of the year compared to the corresponding time period of the year before. Of the sub-industries of information and communication activities, software, consultancy and related activities grew by more than 25 per cent, and information services activities by over 20 per cent year-on-year in October to December. Real estate activities also grew by over eight per cent in October to December.

When examining the whole year 2014, information and communication activities grew by close on nine per cent. Of the sub-industries of information and communication activities, software, consultancy and related activities, which grew by around 21 per cent, and information services activities, which increased by over 13 per cent year-on-year, especially boosted the growth in January to December. Among the sub-industries of information and communication activities, turnover development has been weakest in publishing activities, where the drop from 2013 amounted to over three per cent.

In 2014, turnover development in main service industries was weakest in transportation and storage, where the combined full-year turnover decreased by one per cent from 2013. Turnover decreased in 2014 in all sub-industries of transportation and storage compared with 2013: turnover in road and railway traffic declined by 1.1 per cent, in water traffic by 1.4 per cent, and in warehousing and support activities for transportation by 0.6 per cent.

# Contents

## Tables

### Appendix tables

|                                                                                  |   |
|----------------------------------------------------------------------------------|---|
| Appendix table 1. Year-on-year change in turnover by industry, % (TOL 2008)..... | 4 |
|----------------------------------------------------------------------------------|---|

## Figures

### Appendix figures

|                                                                                 |   |
|---------------------------------------------------------------------------------|---|
| Appendix figure 1. Turnover of service industries, trend series (TOL 2008)..... | 5 |
|---------------------------------------------------------------------------------|---|

|                                    |   |
|------------------------------------|---|
| Revisions in these statistics..... | 6 |
|------------------------------------|---|

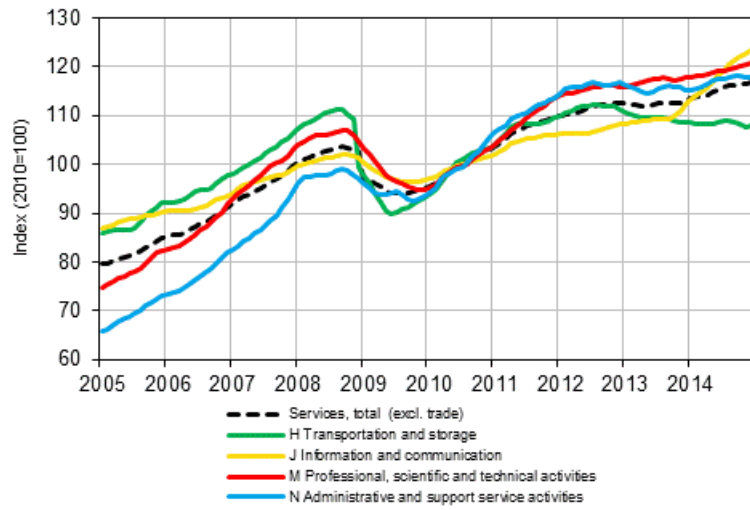
## Appendix tables

**Appendix table 1. Year-on-year change in turnover by industry, % (TOL 2008)**

|                                                     | Year-on-year change by three-month period, % |            |            |            | Cumulative year-on-year change, % | Year-on-year change in the latest month, % |
|-----------------------------------------------------|----------------------------------------------|------------|------------|------------|-----------------------------------|--------------------------------------------|
|                                                     | 01-03/2014                                   | 04-06/2014 | 07-09/2014 | 10-12/2014 |                                   |                                            |
| HIJLMNRS Other service activities total             | 1,9                                          | 1,7        | 3,4        | 4,0        | 2,8                               | 5,6                                        |
| H Transportation and storage                        | -1,1                                         | -1,8       | -0,2       | -0,8       | -1,0                              | 2,4                                        |
| I Accommodation and food service activities         | 0,3                                          | -0,4       | 1,4        | 1,8        | 0,8                               | 4,7                                        |
| J Information and communication                     | 5,2                                          | 6,7        | 11,9       | 10,7       | 8,6                               | 11,8                                       |
| L=68 Real estate activities                         | 5,4                                          | 4,6        | 3,7        | 8,1        | 5,6                               | 4,1                                        |
| M Professional, scientific and technical activities | 2,8                                          | 0,2        | 1,2        | 3,8        | 2,0                               | 4,7                                        |
| N Administrative and support services activities    | 0,0                                          | 2,2        | 1,8        | 2,3        | 1,6                               | 4,7                                        |
| R Arts, entertainment and recreation                | 2,4                                          | 4,0        | 5,5        | 2,5        | 3,6                               | 4,4                                        |
| S Other service activities                          | 2,3                                          | -0,1       | 0,4        | 0,6        | 0,8                               | 4,7                                        |

# Appendix figures

**Appendix figure 1. Turnover of service industries, trend series (TOL 2008)**



Source: Statistics Finland

# Revisions in these statistics

The data of the statistics have become revised according to the table below. For more information about data revisions, see Section 3 of the quality description (only in Finnish).

## Revision of annual changes in turnover in main industries<sup>1)</sup>

| Industry / Reference period                         |         | Year-on-year change,% |                             | Revision, percentage point |
|-----------------------------------------------------|---------|-----------------------|-----------------------------|----------------------------|
|                                                     |         | 1st release           | Latest release (2015-03-13) |                            |
| HIJLMNRS<br>Other service activities total          | 07/2014 | 3,8                   | 2,9                         | -0,9                       |
|                                                     | 08/2014 | 3,1                   | 2,1                         | -1,0                       |
|                                                     | 09/2014 | 6,0                   | 5,0                         | -1,0                       |
|                                                     | 10/2014 | 4,4                   | 3,9                         | -0,5                       |
|                                                     | 11/2014 | 2,6                   | 2,3                         | -0,3                       |
| H Transportation and storage                        | 07/2014 | 0,4                   | -0,3                        | -0,7                       |
|                                                     | 08/2014 | -2,6                  | -2,9                        | -0,3                       |
|                                                     | 09/2014 | 2,8                   | 2,4                         | -0,4                       |
|                                                     | 10/2014 | -0,9                  | -0,8                        | 0,1                        |
|                                                     | 11/2014 | -4,1                  | -4,1                        | 0,0                        |
| I Accommodation and food service activities         | 07/2014 | 2,2                   | 2,1                         | -0,1                       |
|                                                     | 08/2014 | 2,8                   | 2,1                         | -0,7                       |
|                                                     | 09/2014 | 1,1                   | 0,0                         | -1,1                       |
|                                                     | 10/2014 | 3,7                   | 3,0                         | -0,7                       |
|                                                     | 11/2014 | -1,7                  | -2,1                        | -0,4                       |
| J Information and communication                     | 07/2014 | 10,1                  | 9,3                         | -0,8                       |
|                                                     | 08/2014 | 12,4                  | 11,4                        | -1,0                       |
|                                                     | 09/2014 | 15,1                  | 14,6                        | -0,5                       |
|                                                     | 10/2014 | 12,6                  | 12,4                        | -0,2                       |
|                                                     | 11/2014 | 8,1                   | 7,7                         | -0,4                       |
| L=68 Real estate activities                         | 07/2014 | 3,9                   | 3,6                         | -0,3                       |
|                                                     | 08/2014 | 5,5                   | 4,7                         | -0,8                       |
|                                                     | 09/2014 | 3,7                   | 2,9                         | -0,8                       |
|                                                     | 10/2014 | 5,0                   | 3,5                         | -1,5                       |
|                                                     | 11/2014 | 19,5                  | 18,7                        | -0,8                       |
| M Professional, scientific and technical activities | 07/2014 | 3,2                   | 0,8                         | -2,4                       |
|                                                     | 08/2014 | 0,5                   | -2,0                        | -2,5                       |
|                                                     | 09/2014 | 6,5                   | 4,3                         | -2,2                       |
|                                                     | 10/2014 | 4,9                   | 3,3                         | -1,6                       |
|                                                     | 11/2014 | 3,6                   | 3,1                         | -0,5                       |
| N Administrative and support services activities    | 07/2014 | 3,7                   | 1,7                         | -2,0                       |
|                                                     | 08/2014 | 2,7                   | 0,7                         | -2,0                       |
|                                                     | 09/2014 | 4,9                   | 3,1                         | -1,8                       |
|                                                     | 10/2014 | 4,0                   | 3,4                         | -0,6                       |
|                                                     | 11/2014 | -1,3                  | -1,5                        | -0,2                       |
| R Arts, entertainment and recreation                | 07/2014 | 8,6                   | 8,1                         | -0,5                       |
|                                                     | 08/2014 | 7,4                   | 6,8                         | -0,6                       |
|                                                     | 09/2014 | 1,5                   | 1,5                         | 0,0                        |
|                                                     | 10/2014 | 4,3                   | 4,1                         | -0,2                       |
|                                                     | 11/2014 | -0,7                  | -0,9                        | -0,2                       |

| Industry / Reference period |         | Year-on-year change, % |                             | Revision, percentage point |
|-----------------------------|---------|------------------------|-----------------------------|----------------------------|
|                             |         | 1st release            | Latest release (2015-03-13) |                            |
| S Other service activities  | 07/2014 | -0,6                   | 0,0                         | 0,6                        |
|                             | 08/2014 | -2,3                   | -1,7                        | 0,6                        |
|                             | 09/2014 | 4,7                    | 2,9                         | -1,8                       |
|                             | 10/2014 | -0,2                   | -0,3                        | -0,1                       |
|                             | 11/2014 | -2,9                   | -2,9                        | 0,0                        |

1) The 1st release refers to the time when data for the reference period were released for the first time. The revision describes the difference of annual change percentages between the first and latest release.

### Revision of long-term annual changes in turnover in main industries

| Industry                                            | Year | Average <sup>1)</sup> | Average for absolute values <sup>2)</sup> |
|-----------------------------------------------------|------|-----------------------|-------------------------------------------|
| HIJLMNRS Other service activities total             | 2011 | -0,8                  | 0,8                                       |
|                                                     | 2012 | -0,8                  | 0,8                                       |
|                                                     | 2013 | -0,8                  | 0,8                                       |
| H Transportation and storage                        | 2011 | -0,4                  | 0,5                                       |
|                                                     | 2012 | -0,4                  | 0,6                                       |
|                                                     | 2013 | -0,5                  | 0,5                                       |
| I Accommodation and food service activities         | 2011 | -0,5                  | 0,5                                       |
|                                                     | 2012 | -0,6                  | 0,7                                       |
|                                                     | 2013 | -0,8                  | 0,8                                       |
| J Information and communication                     | 2011 | -0,1                  | 0,6                                       |
|                                                     | 2012 | -0,7                  | 0,7                                       |
|                                                     | 2013 | -0,6                  | 0,7                                       |
| L=68 Real estate activities                         | 2011 | -0,9                  | 1,1                                       |
|                                                     | 2012 | -1,2                  | 1,3                                       |
|                                                     | 2013 | -1,3                  | 1,3                                       |
| M Professional, scientific and technical activities | 2011 | -3,0                  | 3,0                                       |
|                                                     | 2012 | -1,9                  | 2,0                                       |
|                                                     | 2013 | -1,7                  | 1,7                                       |
| N Administrative and support services activities    | 2011 | -0,9                  | 1,0                                       |
|                                                     | 2012 | -0,6                  | 0,7                                       |
|                                                     | 2013 | -0,4                  | 0,6                                       |
| R Arts, entertainment and recreation                | 2011 | -0,1                  | 0,9                                       |
|                                                     | 2012 | -0,1                  | 0,5                                       |
|                                                     | 2013 | -0,3                  | 0,6                                       |
| S Other service activities                          | 2011 | -1,5                  | 1,9                                       |
|                                                     | 2012 | -0,7                  | 1,0                                       |
|                                                     | 2013 | -1,3                  | 2,3                                       |

1) Average for data revised between the first and seventh release in the statistical reference year.

2) Average for absolute values of differences between the first and seventh release.

### Inquiries

Aki Niskanen 029 551 2657

Anna Muurainen 029 551 2670

Director in charge:

Hannele Orjala

[palvelut.suhdanne@stat.fi](mailto:palvelut.suhdanne@stat.fi)

[www.stat.fi](http://www.stat.fi)

Source: Turnover of service industries, Statistics Finland