

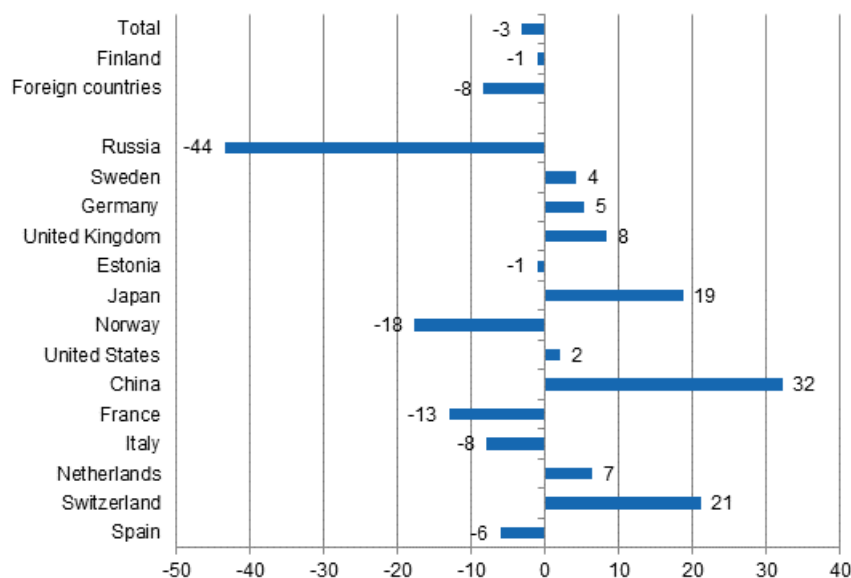
# Accommodation statistics

2015, November

## Overnight stays at accommodation establishments decreased by 3.1 per cent in November

The total number of overnight stays at Finnish accommodation establishments was close on 1.3 million in November 2015, which was 3.1 per cent down on one year previously. Overnight stays by foreign tourists decreased by 8.3 per cent and accommodation establishments recorded 330,000 of them. Overnight stays by resident tourists decreased by 1.1 per cent and accommodation establishments recorded good 929,000 of them. These figures are preliminary data from Statistics Finland's statistics on accommodation establishments and they have been collected from accommodation establishments with at least 20 beds or caravan pitches with electricity connection.

### Change in overnight stays in November 2015/2014, %



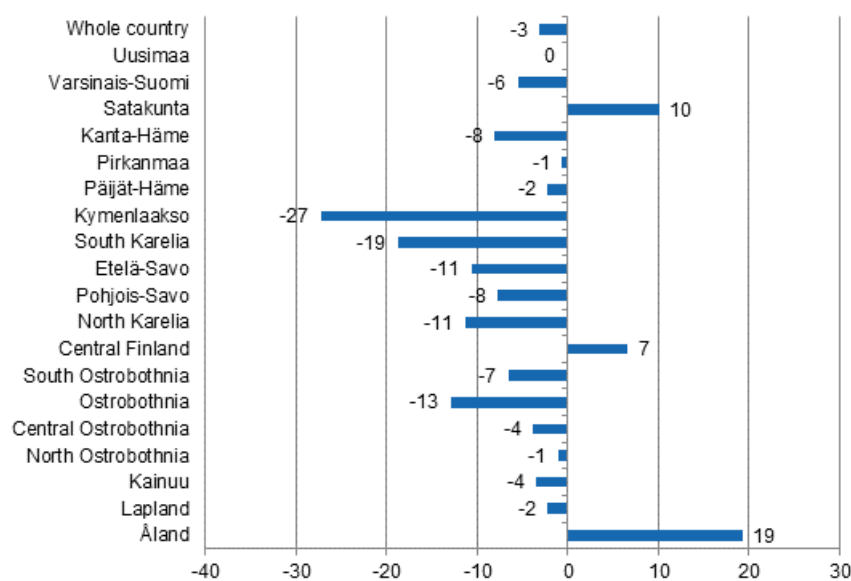
Russians were the largest group of foreign tourists in November with good 53,000 overnight stays. However, this was 43.5 per cent less than the year before. Swedes came next with nearly 31,000 nights spent, which was 4.3 per cent more than in November 2014. Germans were in the third position with almost 27,000

overnight stays. The number was 5.4 per cent higher than in the year before. 24,000 overnight stays were recorded for British visitors at Finnish accommodation establishments, which was 8.4 per cent more than in November 2014. Among the most important countries of inbound tourism to Finland, overnight stays by Chinese visitors increased most, by 32.2 per cent. A total of nearly 9,000 overnight stays at Finnish accommodation establishments were recorded for them.

In November, good 14,000 overnight stays were recorded for visitors from Japan and Estonia each. Overnight stays by Japanese tourists increased by 18.7 per cent, while those by Estonian tourists decreased by 1.1 per cent. Overnight stays by Norwegian tourists, as those by Russians, continued to decrease to close on 12,100 nights, which was 17.7 per cent lower than one year earlier. By contrast, overnight stays by Swiss visitors made an upturn in May 2015 and the strong growth also continued in November. Finnish accommodation establishments recorded close on 7,000 overnight stays for them, which was 21.2 per cent more than in November 2014.

By region, the total number of overnight stays increased in November most in Åland, up by 19.3 per cent. The number of overnight stays grew by 10.1 per cent in Satakunta and by 6.6 per cent in Central Finland. The biggest decreases in overnight stays were recorded in Kymenlaakso, 27.3 per cent, in South Karelia, 18.8 per cent, and in Ostrobothnia, 12.9 per cent. In the whole country, overnight stays declined by 3.1 per cent from November 2014.

#### Change in overnight stays in November by region 2015 / 2014, %



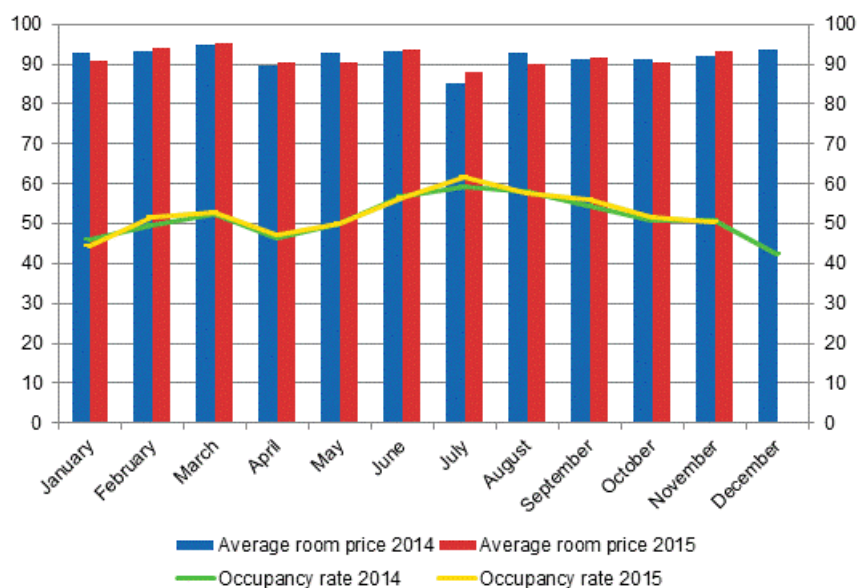
#### Overnight stays in hotels fell by 2.6 per cent

In November 2015, the total number of nights spent in hotels was good 1.1 million, which was 2.6 per cent lower than twelve months earlier. Overnight stays by resident tourists decreased by 1.1 per cent and hotels recorded nearly 830,000 of them in November 2015. Overnight stays by foreign tourists declined by 6.4 per cent and accommodation establishments recorded close on 300,000 of them.

The occupancy rate of hotel rooms in the whole country was 50.6 per cent in November. One year earlier, it was 51.0 per cent. Among the regions, the highest occupancy rates of hotel rooms were measured in Uusimaa, 65.3 per cent, and Pirkanmaa reached an utilisation rate of 54.1 per cent. In North Ostrobothnia, 50.9 per cent of hotel rooms were in use. In Vantaa, the hotel room occupancy rate rose to 71.8 per cent and in Oulu to 66.7 per cent. An occupancy rate of over 60 per cent was also measured in Tampere, where 60.2 per cent of hotel rooms were in use. The hotel room occupancy rate in Helsinki was 71.1 per cent.

In November, the realised average price of a hotel room was EUR 93.07 per day for the whole country. Twelve months previously, it was EUR 92.22.

### Hotel room occupancy rate and the monthly average price



### Total number of nights spent at all accommodation establishments fell by 0.7 per cent in January to November

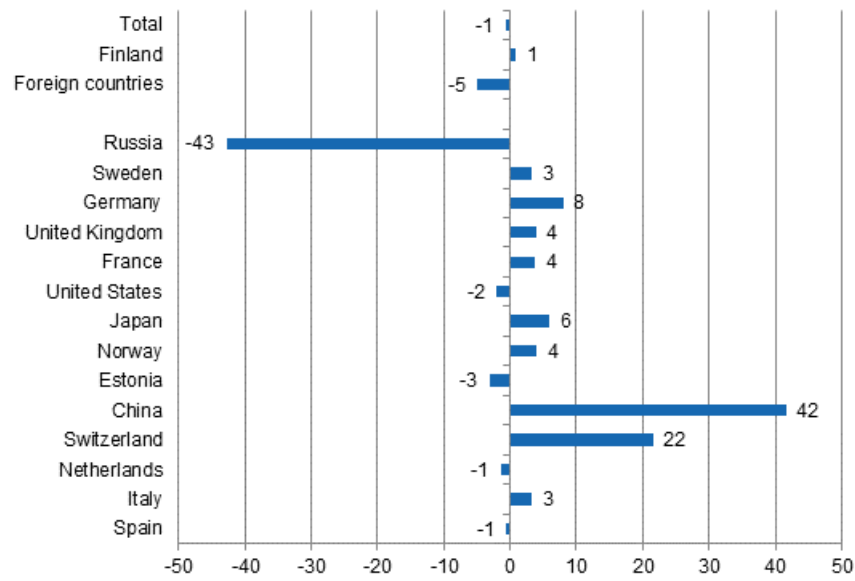
Between January and November 2015, the number of nights spent at accommodation establishments in Finland totalled nearly 18.4 million. This was 0.7 per cent lower than in the corresponding period one year earlier. The number of nights spent by resident tourists increased by 0.9 per cent compared with January to November 2014, while that of nights spent by foreign tourists decreased by 4.9 per cent. In all, 13.4 million overnight stays were recorded for resident tourists and close on five million for non-resident tourists at all accommodation establishments.

Between January and November, the number of nights spent by Russian visitors at accommodation establishments in Finland totalled close on 724,000, which was 42.7 per cent down on the respective time period of 2014. Russians still kept their position as the largest group of foreign visitors in January to November 2015, while Swedish visitors came next with 526,000 overnight stays. Overnight stays of Swedes went up by 3.3 per cent. In January to November, nearly 509,000 overnight stays were recorded for German visitors and 323,000 for British ones. The overnight stays of visitors from Germany increased by 8.0 per cent and those of visitors from Great Britain by 3.9 per cent from the previous year's corresponding period.

In January to November, overnight stays by French tourists numbered 195,000, up by 3.7 per cent from the corresponding period of last year. In all, 190,000 overnight stays were recorded at accommodation establishments for visitors from the United States and nearly 185,000 for Japanese ones. Overnight stays by Japanese tourists increased by 5.9 per cent, while those by tourists from the United States decreased by 2.1 per cent from the corresponding period of 2014.

Among the most important countries of inbound tourism to Finland, overnight stays by Chinese visitors increased most, or by 41.7 per cent, during the January to November period. Their number of overnight stays was good 168,000. Overnight stays by Swiss tourists have also grown heavily and close on 148,000 stays were recorded for them which was 21.7 per cent more than in January to November 2014.

**Change in overnight stays in January-November 2015/2014, %**



# Contents

## Tables

### Appendix tables

Appendix table 1.1. Capacity and its utilization, November 2015.....	6
Appendix table 1.2. Capacity and its utilization, January-November 2015.....	7
Appendix table 2.1. Nights spend in all establishments, November 2015.....	8
Appendix table 2.2. Nights spend in all establishments, January-November 2015.....	9
Appendix table 3.1. Hotel capacity and capacity utilization, November 2015.....	10
Appendix table 3.2. Hotel capacity and capacity utilization, January-November 2015.....	11
Appendix table 4.1. Nights spend in hotels, November 2015.....	12
Appendix table 4.2. Nights spend in hotels, January-November 2015.....	13
Appendix table 5.1. Visitor arrivals and nights spend by country of residence, November 2015.....	14
Appendix table 5.2. Visitor arrivals and nights spend by country of residence, January-November 2015.....	14
Appendix table 6. Nights spend in all establishments, 2015.....	15

# Appendix tables

**Appendix table 1.1. Capacity and its utilization, November 2015**

Region	Number of establishments	Number of bedrooms	Occupancy rate of bedrooms, %	Change of the occupancy rate compared to previous year, %-units	Average price of nights spend, in euros (incl. VAT 10 %)
Whole country	1,063	57,990	46.2	-0.8	59.28
Mainland Finland	1,034	57,017	46.6	-0.8	59.27
Uusimaa	141	14,881	64.3	-0.0	75.26
Varsinais-Suomi	62	3,536	46.0	-2.2	54.27
Satakunta	40	1,427	37.4	3.0	60.17
Kanta-Häme	33	1,561	34.4	-5.1	51.16
Pirkanmaa	69	4,444	51.1	1.2	61.82
Päijät-Häme	34	1,845	36.8	0.1	50.06
Kymenlaakso	28	1,017	37.7	-8.0	57.17
South Karelia	32	1,589	38.2	-6.6	42.96
Etelä-Savo	76	2,141	34.5	1.9	44.53
Pohjois-Savo	48	2,515	42.5	-1.8	53.83
North Karelia	48	1,425	37.7	-5.9	55.39
Central Finland	46	3,057	44.4	-0.6	55.33
South Ostrobothnia	43	1,645	43.7	1.4	45.42
Ostrobothnia	28	1,322	45.4	-8.1	64.93
Central Ostrobothnia	14	536	42.7	-1.2	62.00
North Ostrobothnia	96	4,285	44.8	0.6	49.40
Kainuu	42	2,205	34.6	-3.4	25.69
Lapland	154	7,586	30.7	-0.6	48.43
Åland	29	973	22.9	1.7	1) ..

1) [...] Data too uncertain for presentation.

**Appendix table 1.2. Capacity and its utilization, January-November 2015**

Region	Number of establishments	Number of bedrooms	Occupancy rate of bedrooms, %	Change of the occupancy rate compared to previous year, %-units	Average price of nights spend, in euros (incl. VAT 10 %)
Whole country	1,183	60,998	48.7	0.2	51.03
Mainland Finland	1,133	59,696	48.9	0.1	51.13
Uusimaa	146	15,077	63.6	0.5	64.46
Varsinais-Suomi	74	3,742	49.8	-0.1	49.57
Satakunta	42	1,515	41.7	2.5	51.49
Kanta-Häme	33	1,630	34.5	-2.2	45.77
Pirkanmaa	74	4,537	50.4	1.3	51.73
Päijät-Häme	38	1,995	39.6	-3.6	43.91
Kymenlaakso	31	1,183	39.5	-3.3	42.19
South Karelia	36	1,841	44.7	-6.0	42.53
Etelä-Savo	87	2,516	38.4	-0.8	39.74
Pohjois-Savo	52	2,654	46.8	-0.4	45.94
North Karelia	54	1,568	44.4	0.3	46.64
Central Finland	51	3,150	47.6	-0.3	47.40
South Ostrobothnia	47	1,803	44.3	2.2	39.95
Ostrobothnia	33	1,427	46.0	-0.8	47.51
Central Ostrobothnia	16	576	40.6	-3.0	51.79
North Ostrobothnia	100	4,424	47.4	2.2	42.86
Kainuu	47	2,260	42.2	0.9	34.13
Lapland	173	7,798	38.7	-0.1	43.75
Åland	50	1,302	36.7	2.4	1) ..

1) [...] Data too uncertain for presentation.

**Appendix table 2.1. Nights spend in all establishments, November 2015**

Region	Nights spend, total	Change of nights spend, total, %	Nights spend, residents	Change of nights spend, residents, %	Nights spend, non-residents	Change of nights spend, non-residents, %
Whole country	1,259,776	-3.1	929,368	-1.1	330,408	-8.3
Mainland Finland	1,249,998	-3.3	925,435	-1.2	324,563	-8.8
Uusimaa	400,844	-0.1	239,332	1.6	161,512	-2.5
Varsinais-Suomi	73,829	-5.5	62,701	-2.9	11,128	-18.1
Satakunta	22,394	10.1	17,928	8.2	4,466	18.0
Kanta-Häme	25,371	-8.1	22,555	-5.8	2,816	-23.0
Pirkanmaa	104,581	-0.6	88,189	-4.4	16,392	26.5
Päijät-Häme	36,354	-2.3	32,646	2.0	3,708	-28.4
Kymenlaakso	17,618	-27.3	14,126	-16.2	3,492	-52.5
South Karelia	36,801	-18.8	22,550	4.2	14,251	-39.8
Etelä-Savo	35,331	-10.6	30,420	-3.7	4,911	-38.2
Pohjois-Savo	50,620	-7.7	46,414	-7.0	4,206	-14.1
North Karelia	24,883	-11.3	21,695	-0.4	3,188	-49.1
Central Finland	60,237	6.6	55,013	8.7	5,224	-11.5
South Ostrobothnia	37,890	-6.6	35,258	-9.1	2,632	46.1
Ostrobothnia	24,394	-12.9	19,292	-12.2	5,102	-15.3
Central Ostrobothnia	10,286	-3.8	8,690	-7.1	1,596	19.3
North Ostrobothnia	105,342	-1.1	80,757	2.5	24,585	-11.3
Kainuu	60,722	-3.5	56,073	-3.8	4,649	-0.4
Lapland	122,501	-2.2	71,796	-0.1	50,705	-5.1
Åland	9,778	19.3	3,933	4.4	5,845	32.0



**Appendix table 2.2. Nights spend in all establishments, January-November 2015**

Region	Nights spend, total	Change of nights spend, total, %	Nights spend, residents	Change of nights spend, residents, %	Nights spend, non-residents	Change of nights spend, non-residents, %
Whole country	18,356,975	-0.7	13,400,609	0.9	4,956,366	-4.9
Mainland Finland	17,953,849	-0.8	13,237,653	0.8	4,716,196	-5.2
Uusimaa	5,007,016	4.1	2,749,566	5.7	2,257,450	2.2
Varsinais-Suomi	1,108,395	-1.4	904,494	0.1	203,901	-7.4
Satakunta	375,609	-0.3	319,931	-1.5	55,678	7.8
Kanta-Häme	338,294	-4.9	302,288	-4.7	36,006	-7.3
Pirkanmaa	1,368,247	4.2	1,171,773	5.7	196,474	-4.3
Päijät-Häme	513,309	-6.9	431,279	-6.3	82,030	-10.0
Kymenlaakso	308,026	-8.1	232,816	-0.8	75,210	-25.2
South Karelia	558,284	-13.1	378,774	13.4	179,510	-41.8
Etelä-Savo	654,875	-10.3	519,824	-4.3	135,051	-27.6
Pohjois-Savo	773,567	-1.9	672,435	-0.6	101,132	-9.4
North Karelia	461,013	-0.4	376,364	3.5	84,649	-14.5
Central Finland	919,488	-6.6	800,248	-5.2	119,240	-15.3
South Ostrobothnia	655,620	3.6	629,435	3.5	26,185	5.0
Ostrobothnia	400,849	4.6	322,012	3.8	78,837	7.9
Central Ostrobothnia	142,031	-11.5	126,166	-11.2	15,865	-13.8
North Ostrobothnia	1,461,313	-4.4	1,222,903	-4.4	238,410	-4.6
Kainuu	898,510	0.8	827,196	2.5	71,314	-15.6
Lapland	2,009,403	-1.1	1,250,149	-1.6	759,254	-0.4
Åland	403,126	5.0	162,956	9.0	240,170	2.5

**Appendix table 3.1. Hotel capacity and capacity utilization, November 2015**

Region / municipality	Number of establishments	Number of bedrooms	Occupancy rate of bedrooms, %	Change compared to previous year, %-units	Room price, euros (incl. VAT 10 %)	<sup>1)</sup> RevPAR, euros (incl. VAT 10 %)
Whole country	597	49,974	50.6	-0.4	93.07	47.10
Mainland Finland	584	49,232	50.9	-0.4	93.08	47.37
Uusimaa	113	14,495	65.3	0.4	105.65	69.03
Espoo	12	1,235	57.6	0.3	87.52	50.37
Helsinki	53	8,729	71.1	-1.7	110.99	78.92
Vantaa	11	2,237	71.8	5.0	104.57	75.08
Varsinais-Suomi	37	2,928	49.7	-2.8	84.29	41.89
Turku	18	1,987	55.5	-0.6	86.50	47.99
Satakunta	25	1,135	44.1	3.8	84.27	37.18
Pori	9	660	41.1	-2.0	85.34	35.11
Kanta-Häme	18	1,316	38.8	-5.1	77.78	30.21
Hämeenlinna	8	696	38.8	-0.3	89.37	34.70
Pirkanmaa	42	3,913	54.1	1.2	98.08	53.02
Tampere	25	2,962	60.2	2.6	100.79	60.65
Päijät-Häme	14	1,681	38.2	-0.4	80.58	30.81
Lahti	5	559	48.2	0.5	89.04	42.91
Kymenlaakso	15	751	46.5	-4.4	89.90	41.77
Kouvola	7	440	42.4	-8.0	82.71	35.09
South Karelia	13	1,162	45.3	-5.1	87.17	39.51
Lappeenranta	8	804	49.1	-10.8	80.52	39.55
Etelä-Savo	28	1,523	41.5	3.0	71.01	29.45
Mikkeli	8	553	51.7	3.8	76.38	39.48
Pohjois-Savo	28	2,301	44.2	-1.7	86.08	38.02
Kuopio	15	1,397	46.9	-3.5	89.20	41.81
North Karelia	21	1,187	42.7	-6.5	84.19	35.92
Joensuu	6	601	56.2	-12.1	86.25	48.45
Central Finland	26	2,696	47.9	-0.9	81.87	39.22
Jyväskylä	11	1,362	57.6	0.7	91.90	52.95
South Ostrobothnia	22	1,408	49.4	2.0	72.98	36.09
Seinäjoki	7	609	55.0	4.2	82.86	45.58
Ostrobothnia	21	1,219	48.8	-6.3	88.29	43.12
Vaasa	8	795	59.0	-3.9	90.13	53.16
Central Ostrobothnia	9	478	44.2	-1.8	86.83	38.41
Kokkola	5	361	51.9	-1.8	87.51	45.45
North Ostrobothnia	49	3,323	50.9	1.0	86.44	44.00
Kuusamo	11	773	38.9	-1.8	94.82	36.88
Oulu	11	1,419	66.7	4.8	92.16	61.48
Kainuu	20	1,773	39.2	-2.4	60.62	23.79
Kajaani	6	414	37.5	3.1	81.20	30.47
Sotkamo	6	1,103	45.9	-2.9	53.72	24.63
Lapland	83	5,943	35.2	0.7	90.45	31.79
Rovaniemi	13	1,322	47.1	0.9	81.81	38.54
Åland	13	742	28.5	1.0	..	..
Maarianhamina	6	458	44.0	3.6	..	..

1) RevPar = Average accommodation sales revenue per available room. Calculation formula: RevPar = Average room price \* Occupancy rate.[...] Data too uncertain for presentation.

**Appendix table 3.2. Hotel capacity and capacity utilization, January-November 2015**

Region / municipality	Number of establishments	Number of bedrooms	Occupancy rate of bedrooms, %	Change compared to previous year, %-units	Room price, euros (incl. VAT 10 %)	<sup>1)</sup> RevPAR, euros (incl. VAT 10 %)
Whole country	614	50,871	52.8	0.6	91.61	48.41
Mainland Finland	600	50,074	53.0	0.5	91.59	48.51
Uusimaa	113	14,496	64.6	0.9	100.66	65.04
Espoo	12	1,234	55.8	-0.1	82.15	45.80
Helsinki	52	8,682	70.1	0.9	105.87	74.21
Vantaa	11	2,236	70.0	1.2	98.05	68.65
Varsinais-Suomi	39	2,982	54.5	-0.4	86.56	47.17
Turku	18	2,020	58.0	-0.6	88.68	51.46
Satakunta	25	1,167	47.8	3.2	86.34	41.24
Pori	9	654	49.4	2.1	88.52	43.75
Kanta-Häme	18	1,336	39.5	-1.6	75.11	29.66
Hämeenlinna	8	708	39.1	-0.1	85.66	33.54
Pirkanmaa	42	3,850	53.4	1.5	95.09	50.80
Tampere	25	2,935	57.4	0.9	97.53	56.01
Päijät-Häme	15	1,744	42.1	-3.8	81.28	34.20
Lahti	6	628	48.7	2.3	87.08	42.44
Kymenlaakso	17	914	43.0	-1.2	85.70	36.82
Kouvola	7	437	42.3	-0.5	81.09	34.31
South Karelia	16	1,371	49.0	-6.7	89.23	43.73
Lappeenranta	8	802	57.4	-6.1	81.39	46.75
Etelä-Savo	30	1,716	42.9	0.0	79.17	34.00
Mikkeli	8	574	49.8	1.4	79.82	39.73
Pohjois-Savo	30	2,322	48.5	-0.2	86.90	42.16
Kuopio	16	1,418	52.5	-0.7	90.48	47.52
North Karelia	22	1,214	49.3	0.3	87.97	43.33
Joensuu	7	624	59.5	-0.9	89.17	53.09
Central Finland	27	2,712	51.0	-0.7	84.43	43.10
Jyväskylä	12	1,427	55.0	-1.0	91.48	50.31
South Ostrobothnia	22	1,478	50.2	1.8	77.11	38.75
Seinäjoki	7	582	53.8	1.9	85.34	45.94
Ostrobothnia	22	1,241	49.8	-0.2	87.39	43.55
Vaasa	8	802	57.4	1.3	89.40	51.31
Central Ostrobothnia	9	485	43.1	-3.2	84.75	36.53
Kokkola	5	368	49.1	-4.5	86.30	42.40
North Ostrobothnia	49	3,356	53.2	4.1	84.20	44.79
Kuusamo	10	762	37.7	1.1	88.24	33.22
Oulu	12	1,464	67.6	6.5	88.89	60.09
Kainuu	20	1,778	46.2	0.4	74.38	34.39
Kajaani	6	414	40.3	3.2	78.17	31.53
Sotkamo	6	1,108	53.1	-0.1	73.20	38.87
Lapland	85	5,912	42.8	0.8	90.62	38.79
Rovaniemi	13	1,282	52.5	-0.1	84.14	44.16
Åland	15	797	44.8	3.0	..	..
Maarianhamina	7	487	58.5	4.2	..	..

1) RevPar = Average accommodation sales revenue per available room. Calculation formula: RevPar = Average room price \* Occupancy rate.[...] Data too uncertain for presentation.

**Appendix table 4.1. Nights spend in hotels, November 2015**

Region / municipality	Nights spend, total	Change of nights spend, total, %	Nights spend, residents	Change of nights spend, residents, %	Nights spend, non-residents	Change of nights spend, non-residents, %
Whole country	1,128,966	-2.6	829,561	-1.1	299,405	-6.4
Mainland Finland	1,120,374	-2.8	826,067	-1.2	294,307	-6.9
Uusimaa	389,126	0.4	232,497	1.7	156,629	-1.6
Espoo	28,343	-0.2	19,059	8.2	9,284	-13.9
Helsinki	251,327	-2.0	135,644	-2.6	115,683	-1.4
Vantaa	66,980	7.4	43,084	12.3	23,896	-0.3
Varsinais-Suomi	65,095	-7.8	55,066	-5.1	10,029	-20.1
Turku	48,353	-4.8	39,988	-4.4	8,365	-7.0
Satakunta	18,953	3.6	14,747	1.1	4,206	13.5
Pori	10,691	-6.7	9,035	-4.3	1,656	-17.8
Kanta-Häme	23,694	-7.2	21,162	-4.5	2,532	-25.0
Hämeenlinna	11,947	-8.4	11,047	-4.6	900	-38.1
Pirkanmaa	95,734	0.2	80,290	-4.1	15,444	31.0
Tampere	79,281	0.6	65,102	-4.5	14,179	33.4
Päijät-Häme	32,089	-2.5	28,851	1.1	3,238	-26.0
Lahti	10,903	-10.7	8,543	-3.1	2,360	-30.4
Kymenlaakso	14,128	-31.8	11,185	-23.6	2,943	-51.5
Kouvola	7,837	-18.2	6,604	-14.4	1,233	-33.8
South Karelia	29,428	-24.0	18,833	-2.2	10,595	-45.5
Lappeenranta	20,759	-12.1	14,996	5.6	5,763	-38.7
Etelä-Savo	28,244	-7.0	25,396	-3.5	2,848	-30.0
Mikkeli	12,506	1.5	10,755	3.9	1,751	-11.1
Pohjois-Savo	46,943	-7.3	43,281	-8.1	3,662	3.6
Kuopio	29,261	-8.1	27,555	-6.9	1,706	-24.0
North Karelia	22,586	-11.9	19,808	-1.2	2,778	-50.3
Joensuu	13,596	-19.4	11,888	-5.9	1,708	-59.6
Central Finland	56,400	4.9	51,429	7.2	4,971	-13.7
Jyväskylä	33,004	2.1	29,430	1.8	3,574	4.7
South Ostrobothnia	33,432	-6.8	31,002	-9.7	2,430	59.2
Seinäjoki	13,689	1.9	12,205	-3.0	1,484	72.4
Ostrobothnia	22,937	-13.3	17,887	-12.9	5,050	-14.8
Vaasa	18,166	-5.6	13,931	-2.0	4,235	-15.8
Central Ostrobothnia	8,510	-7.7	7,746	-7.6	764	-8.9
Kokkola	7,232	-5.4	6,608	-7.3	624	21.2
North Ostrobothnia	83,092	-0.6	64,621	3.3	18,471	-12.2
Kuusamo	21,044	-10.3	10,080	-0.2	10,964	-17.9
Oulu	41,496	2.4	36,557	5.8	4,939	-17.5
Kainuu	49,580	2.3	45,317	2.2	4,263	2.9
Kajaani	6,189	14.3	5,866	23.1	323	-50.5
Sotkamo	41,816	1.3	37,942	0.0	3,874	15.5
Lapland	100,403	2.4	56,949	3.9	43,454	0.4
Rovaniemi	30,640	13.0	19,236	16.6	11,404	7.3
Åland	8,592	24.8	3,494	5.8	5,098	42.4
Maarianhamina	7,004	19.3	3,203	4.1	3,801	35.9

**Appendix table 4.2. Nights spend in hotels, January-November 2015**

Region / municipality	Nights spend, total	Change of nights spend, total, %	Nights spend, residents	Change of nights spend, residents, %	Nights spend, non-residents	Change of nights spend, non-residents, %
Whole country	14,622,557	0.5	10,517,206	2.5	4,105,351	-4.4
Mainland Finland	14,405,772	0.3	10,418,359	2.4	3,987,413	-4.8
Uusimaa	4,671,593	4.1	2,544,234	6.0	2,127,359	1.9
Espoo	337,243	4.3	212,055	16.7	125,188	-11.6
Helsinki	3,027,788	4.3	1,412,145	3.4	1,615,643	5.0
Vantaa	787,301	4.1	491,596	9.9	295,705	-4.3
Varsinais-Suomi	878,780	-1.5	717,530	0.3	161,250	-8.8
Turku	622,257	-2.0	504,187	-0.0	118,070	-9.7
Satakunta	263,066	0.8	214,218	-1.3	48,848	11.6
Pori	157,587	0.3	134,631	-0.9	22,956	8.0
Kanta-Häme	288,174	-1.1	254,700	-0.7	33,474	-3.6
Hämeenlinna	152,491	-4.0	136,812	-0.5	15,679	-26.4
Pirkanmaa	1,130,353	5.6	965,080	7.1	165,273	-2.5
Tampere	886,954	6.4	736,116	8.0	150,838	-0.8
Päijät-Häme	415,881	-5.5	348,908	-5.3	66,973	-6.9
Lahti	143,882	-5.9	104,762	-7.5	39,120	-1.1
Kymenlaakso	186,358	-13.6	141,350	-6.3	45,008	-30.7
Kouvola	92,614	-6.9	76,632	-0.6	15,982	-28.5
South Karelia	429,470	-16.1	294,197	12.9	135,273	-46.1
Lappeenranta	279,250	-7.3	215,009	13.8	64,241	-42.8
Etelä-Savo	402,062	-5.8	349,934	-1.5	52,128	-27.1
Mikkeli	151,254	-0.7	126,285	4.7	24,969	-21.3
Pohjois-Savo	638,467	-1.3	571,597	0.3	66,870	-12.5
Kuopio	417,171	-0.1	375,222	2.3	41,949	-17.6
North Karelia	333,003	-0.2	278,908	6.7	54,095	-25.1
Joensuu	177,775	-1.8	145,790	8.0	31,985	-30.5
Central Finland	781,189	-6.3	674,296	-4.4	106,893	-16.7
Jyväskylä	392,565	-3.8	336,166	-2.6	56,399	-10.8
South Ostrobothnia	461,774	1.7	442,582	1.7	19,192	1.2
Seinäjoki	154,452	0.2	142,387	-0.5	12,065	9.3
Ostrobothnia	304,001	1.6	241,518	2.7	62,483	-2.4
Vaasa	226,703	1.3	174,340	1.4	52,363	1.1
Central Ostrobothnia	100,032	-9.8	91,965	-8.2	8,067	-25.0
Kokkola	84,126	-7.8	77,251	-6.5	6,875	-20.6
North Ostrobothnia	996,898	1.3	822,714	1.9	174,184	-1.7
Kuusamo	220,314	-0.3	173,983	6.5	46,331	-19.6
Oulu	507,160	1.7	424,506	4.5	82,654	-10.8
Kainuu	679,606	4.1	632,680	6.4	46,926	-19.8
Kajaani	80,593	7.2	72,948	8.0	7,645	0.2
Sotkamo	563,914	4.3	532,502	7.0	31,412	-26.8
Lapland	1,445,065	-0.2	831,948	-0.6	613,117	0.4
Rovaniemi	368,681	9.7	186,726	18.3	181,955	2.1
Åland	216,785	12.6	98,847	13.6	117,938	11.8
Maarianhamina	155,411	18.1	78,665	16.3	76,746	20.0

**Appendix table 5.1. Visitor arrivals and nights spend by country of residence, November 2015**

Country of residence	Visitor arrivals in all accommodation establishments	Nights spend in all accommodation establishments	Change of nights spend in all accommodation establishments, %	Nights spend in hotels	Change of nights spend in hotels, %
Total	735,468	1,259,776	-3.1	1,128,966	-2.6
Finland	573,366	929,368	-1.1	829,561	-1.1
Foreign countries	162,102	330,408	-8.3	299,405	-6.4
Sweden	20,547	30,966	4.3	30,363	6.2
Germany	12,192	26,713	5.4	24,836	3.9
Russia	23,375	53,453	-43.5	41,240	-44.7
United Kingdom	12,676	24,033	8.4	23,081	9.7
United States	5,585	11,468	2.1	11,081	3.6
Norway	6,545	12,090	-17.7	11,138	-16.5
Netherlands	4,096	7,568	6.5	7,200	7.5
Italy	3,687	8,261	-7.9	7,453	-8.6
France	3,468	8,312	-13.0	7,664	-11.6
Japan	6,575	14,070	18.7	13,197	19.7
Estonia	5,791	14,326	-1.1	9,983	-1.1
Switzerland	2,494	6,809	21.2	6,429	24.2
Spain	2,456	5,370	-6.1	4,964	-2.0
China	4,458	8,886	32.2	8,588	31.3

**Appendix table 5.2. Visitor arrivals and nights spend by country of residence, January-November 2015**

Country of residence	Visitor arrivals in all accommodation establishments	Nights spend in all accommodation establishments	Change of nights spend in all accommodation establishments, %	Nights spend in hotels	Change of nights spend in hotels, %
Total	10,040,462	18,356,975	-0.7	14,622,557	0.5
Finland	7,650,676	13,400,609	0.9	10,517,206	2.5
Foreign countries	2,389,786	4,956,366	-4.9	4,105,351	-4.4
Sweden	298,870	526,314	3.3	413,082	6.2
Germany	253,498	508,960	8.0	417,085	10.0
Russia	324,336	723,808	-42.7	525,479	-44.4
United Kingdom	141,506	323,108	3.9	286,984	4.7
United States	89,447	190,197	-2.1	183,128	-1.9
Norway	90,218	178,025	4.0	136,307	1.1
Netherlands	68,086	146,826	-1.4	118,258	1.4
Italy	55,304	113,261	3.3	100,670	5.5
France	77,334	195,075	3.7	169,906	4.3
Japan	98,425	184,949	5.9	179,528	6.7
Estonia	75,720	175,158	-3.1	120,769	-6.0
Switzerland	66,254	147,731	21.7	111,431	22.3
Spain	43,169	90,126	-0.6	80,366	3.1
China	113,381	168,299	41.7	164,047	43.0

**Appendix table 6. Nights spend in all establishments, 2015**

Month	Nights spend, total	Change of nights spend, total, %	Nights spend, residents	Change of nights spend, residents, %	Nights spend, non-residents	Change of nights spend, non-residents, %
Total	18,356,975	-0.7	13,400,609	0.9	4,956,366	-4.9
January	1,275,308	-7.9	786,665	2.7	488,643	-21.0
February	1,450,304	1.8	1,055,604	3.3	394,700	-2.1
March	1,575,319	-3.0	1,162,544	-0.4	412,775	-9.7
April	1,347,365	-0.2	1,057,498	1.0	289,867	-4.2
May	1,347,374	-0.2	960,556	1.0	386,818	-3.2
June	2,022,967	-2.7	1,501,262	-1.3	521,705	-6.7
July	2,947,033	0.4	2,194,620	-1.2	752,413	5.3
August	2,146,410	0.0	1,487,948	2.7	658,462	-5.5
September	1,568,091	3.9	1,158,974	3.3	409,117	5.5
October	1,417,028	2.6	1,105,570	3.2	311,458	0.5
November	1,259,776	-3.1	929,368	-1.1	330,408	-8.3

### Inquiries

Marjut Tuominen           029 551 3556  
Kari Keränen             029 551 3208  
Director in charge:  
Mari Ylä-Jarkko

[liikenne.matkailu@stat.fi](mailto:liikenne.matkailu@stat.fi)  
[www.stat.fi](http://www.stat.fi)  
Source: Accommodation Statistics. Statistics Finland