

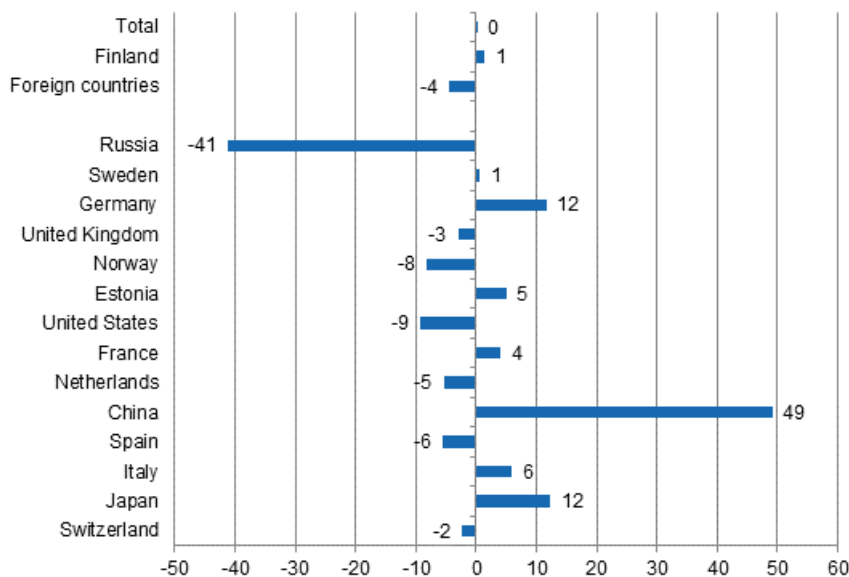
Accommodation statistics

2015, April

Nights spent by foreign tourists in Finland decreased by 4.4 per cent in April

The number of recorded nights spent by foreign tourists at Finnish accommodation establishments in April 2015 was 289,500, which was 4.4 per cent lower than in April 2014. By contrast, overnight stays by resident tourists increased by 1.4 per cent and totalled nearly 1.1 million. The total number of overnight stays at accommodation establishments was around 1.4 million, which was almost the same number as in the year before. These figures are preliminary data from Statistics Finland's statistics on accommodation establishments and they have been collected from accommodation establishments with at least 20 beds or caravan pitches with electricity connection.

Change in overnight stays in April 2015/2014, %



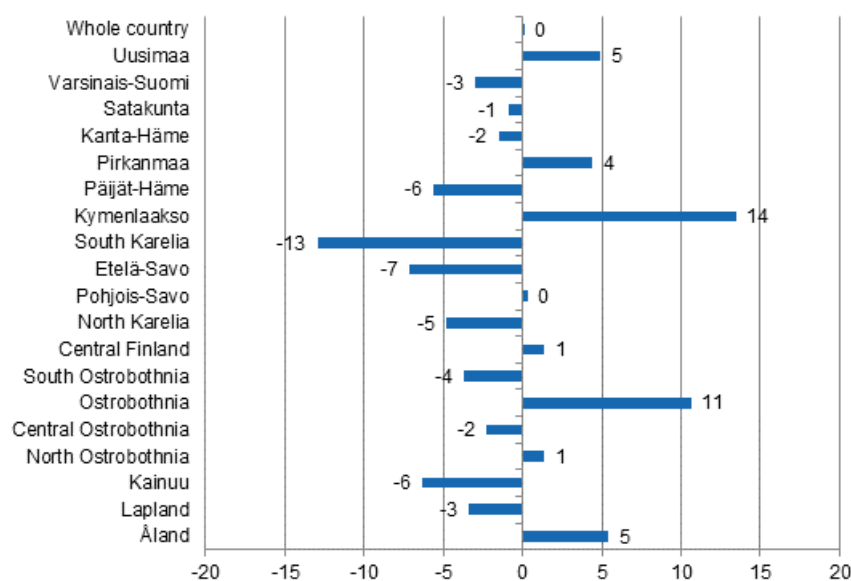
The steep decline in overnight stays by Russian visitors tapered off slightly in April 2015. Altogether, close on 35,000 overnight stays were recorded for them at Finnish accommodation establishments, which was 41.1 per cent lower than in April 2014. Russians and Swedes were the largest groups of foreign tourists in April, with Germans in the third place. Altogether, 33,500 nights spent were recorded for Swedish

visitors, which was close on one per cent more than twelve months earlier. German visitors spent 23,000 nights in Finland, which was 11.7 per cent higher than in April 2014. British visitors came next with 23,000 overnight stays. The number was 3.0 per cent lower than last year.

Thirteen to fourteen thousand overnight stays were recorded for Estonian and Norwegian visitors. Overnight stays by Estonian tourists increased by 5.0 per cent, while those by Norwegian tourists decreased by 8.1 per cent. Overnight stays recorded for visitors from the United States declined by 9.3 per cent in April and totalled close on 11,000 nights at Finnish accommodation establishments. Among the most important countries of inbound tourism to Finland, the biggest increase was recorded for Chinese tourists, who spent nearly 7,000 nights at Finnish accommodation establishments. The number was 49.3 per cent higher than in April 2014.

By region, the total number of overnight stays increased in April most in Kymenlaakso, up by 13.5 per cent. The number of overnight stays in Ostrobothnia grew by 10.7 per cent, and in Uusimaa and Åland, overnight stays grew by around five per cent in each. The biggest drop in overnight stays was recorded in South Karelia, 12.9 per cent. In Etelä-Savo, overnight stays decreased by 7.1 per cent and in Päijät-Häme and Kainuu they declined by six per cent in each. Overnight stays in the whole country remained on level with April 2014.

Change in overnight stays in April by region 2015 / 2014, %



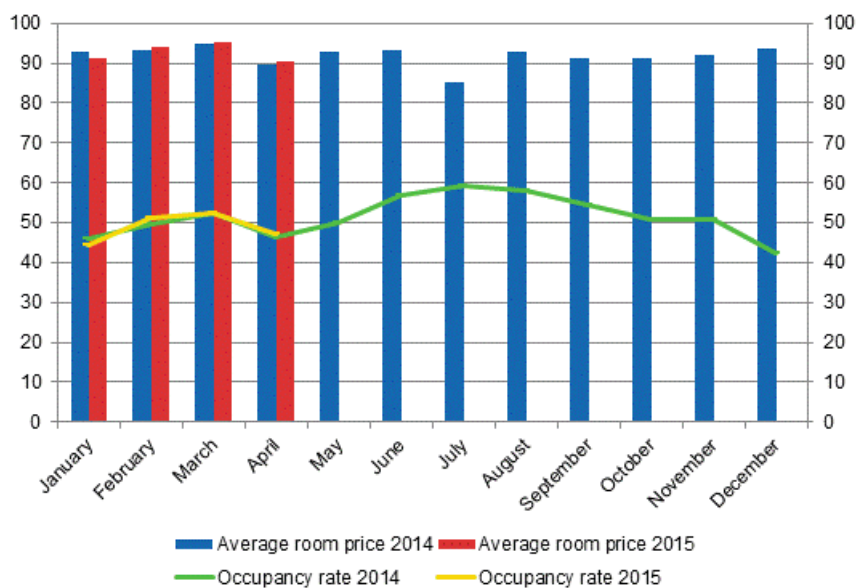
Overnight stays at hotels remained on level with April 2014

The total number of nights spent in hotels was good 1.1 million in April 2015, which was almost the same as one year before. Overnight stays by resident tourists increased by 1.9 per cent and accommodation establishments recorded 870,000 of them. By contrast, overnight stays by foreign tourists decreased by 5.6 per cent year-on-year and hotels recorded a total of 256,000 of them in April 2015.

The occupancy rate of hotel rooms in the whole country was 47.0 per cent in April. One year earlier, it was 46.2 per cent. Among the regions, the highest occupancy rates of hotel rooms were measured in Uusimaa, 55.1 per cent, and North Ostrobothnia, 50.5 per cent. In Vantaa, the hotel room occupancy rate rose to 68.2 per cent and in Kalajoki to 72.6 per cent. The hotel room occupancy rate in Helsinki was 56.7 per cent.

In April, the realised average price of a hotel room was EUR 90.49 per day for the whole country. Twelve months previously, it was EUR 89.85.

Hotel room occupancy rate and the monthly average price



Total number of nights spent at all accommodation establishments fell by 2.2 per cent in January to April

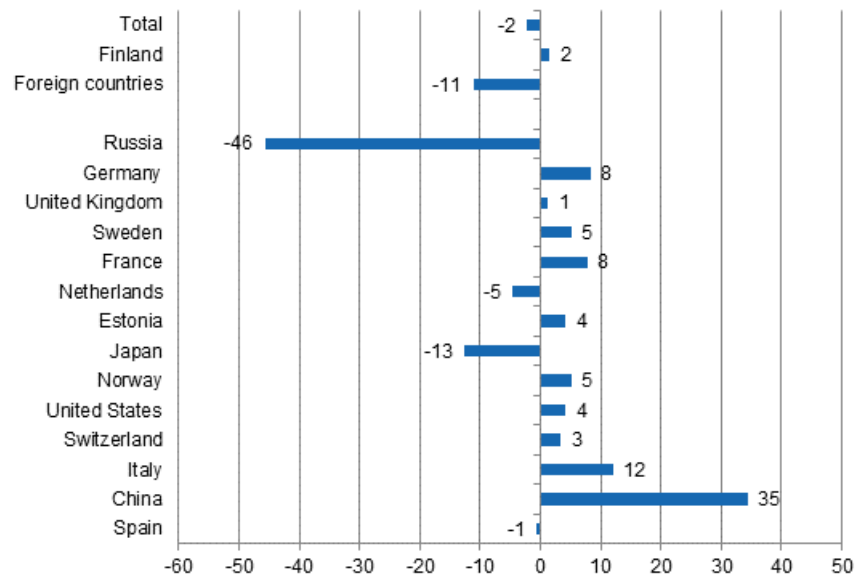
Between January and April 2015, the number of nights spent at accommodation establishments in Finland totalled close on 5.7 million. This was 2.2 per cent lower than in the corresponding period one year earlier. The number of nights spent by resident tourists increased by 1.6 per cent while that of nights spent by foreign tourists decreased by 11.0 per cent. Nearly 4.1 million overnight stays were recorded for resident tourists and close on 1.6 million overnight stays were recorded for non-resident tourists.

April still did not bring any change to the drop of overnight stays by Russian visitors. Between January and April 2015, the number of nights spent by Russian visitors at accommodation establishments in Finland totalled 300,000, which was 45.7 per cent down on the respective time period of last year. They were, however, by far the largest group of foreign visitors in January to April, as German visitors came next with nearly 148,000 overnight stays. Overnight stays of Germans went up by 8.3 per cent. British visitors came third with almost 141,000 overnight stays. The number of nights recorded for them was 1.3 per cent higher than in the respective period one year earlier.

Swedish visitors spent 115,000 nights at accommodation establishments. Their overnight stays increased by 5.1 per cent in January to April. French visitors spent nearly 105,000 nights and Dutch visitors almost 64,000 nights at accommodation establishments. Overnight stays of French visitors increased by 7.8 per cent, whereas those of Dutch visitors decreased by 4.5 per cent from the corresponding period last year. Overnight stays recorded for Japanese visitors declined by 12.5 per cent and totalled close on 52,000.

Among the most important countries of inbound tourism to Finland, overnight stays by Chinese visitors increased most, or by 34.5 per cent, during the January to April period. The number of overnight stays by Chinese visitors rose to good 31,000.

Change in overnight stays in January-April 2015/2014, %



Contents

Tables

Appendix tables

Appendix table 1.1. Capacity and its utilization, April 2015.....	6
Appendix table 1.2. Capacity and its utilization, January-April 2015.....	7
Appendix table 2.1. Nights spend in all establishments, April 2015.....	8
Appendix table 2.2. Nights spend in all establishments, January-April 2015.....	9
Appendix table 3.1. Hotel capacity and capacity utilization, April 2015.....	10
Appendix table 3.2. Hotel capacity and capacity utilization, January-April 2015.....	11
Appendix table 4.1. Nights spend in hotels, April 2015.....	12
Appendix table 4.2. Nights spend in hotels, January-April 2015.....	13
Appendix table 5.1. Visitor arrivals and nights spend by country of residence, April 2015.....	14
Appendix table 5.2. Visitor arrivals and nights spend by country of residence, January-April 2015.....	14
Appendix table 6. Nights spend in all establishments, 2015.....	15

Appendix tables

Appendix table 1.1. Capacity and its utilization, April 2015

Region	Number of establishments	Number of bedrooms	Occupancy rate of bedrooms, %	Change of the occupancy rate compared to previous year, %-units	Average price of nights spend, in euros (incl. VAT 10 %)
Whole country	1,111	59,094	43.9	0.5	53.65
Mainland Finland	1,072	57,879	44.3	0.5	53.64
Uusimaa	141	14,854	54.7	1.9	66.20
Varsinais-Suomi	64	3,587	46.1	0.3	51.99
Satakunta	40	1,436	34.9	2.2	61.65
Kanta-Häme	31	1,533	33.9	-1.6	47.69
Pirkanmaa	70	4,389	46.1	2.3	55.33
Päijät-Häme	36	1,934	45.1	0.5	51.33
Kymenlaakso	29	1,164	35.9	0.8	48.71
South Karelia	34	1,692	41.6	-6.1	54.02
Etelä-Savo	81	2,223	30.1	-1.1	45.25
Pohjois-Savo	50	2,609	39.7	-1.5	50.75
North Karelia	46	1,404	34.7	0.1	53.67
Central Finland	48	2,945	41.8	-0.4	47.34
South Ostrobothnia	44	1,666	37.0	0.9	41.92
Ostrobothnia	28	1,288	45.5	3.1	54.41
Central Ostrobothnia	14	534	38.2	-0.5	55.33
North Ostrobothnia	96	4,353	46.5	3.7	46.77
Kainuu	45	2,201	36.1	-0.8	37.23
Lapland	175	8,067	39.5	-2.3	43.37
Åland	39	1,215	23.6	2.0	¹⁾ ..

1) [...] Data too uncertain for presentation.

Appendix table 1.2. Capacity and its utilization, January-April 2015

Region	Number of establishments	Number of bedrooms	Occupancy rate of bedrooms, %	Change of the occupancy rate compared to previous year, %-units	Average price of nights spend, in euros (incl. VAT 10 %)
Whole country	1,086	58,464	45.7	-0.0	54.60
Mainland Finland	1,057	57,541	46.1	-0.0	54.61
Uusimaa	140	14,777	54.6	-0.4	67.48
Varsinais-Suomi	61	3,535	42.0	-0.0	53.46
Satakunta	39	1,427	34.6	2.6	61.07
Kanta-Häme	31	1,495	31.8	-0.2	46.95
Pirkanmaa	70	4,402	44.4	1.4	54.32
Päijät-Häme	36	1,932	38.8	-1.8	50.31
Kymenlaakso	29	1,120	33.0	-1.4	54.56
South Karelia	34	1,686	39.9	-5.1	51.89
Etelä-Savo	81	2,247	30.5	-3.2	43.60
Pohjois-Savo	51	2,571	44.2	-0.4	49.00
North Karelia	47	1,423	42.2	1.4	55.70
Central Finland	47	2,935	45.4	-0.2	46.81
South Ostrobothnia	43	1,670	38.5	1.6	42.00
Ostrobothnia	28	1,287	45.4	5.0	58.86
Central Ostrobothnia	14	534	37.0	-2.0	59.40
North Ostrobothnia	96	4,340	48.2	2.7	45.83
Kainuu	43	2,185	45.4	0.8	38.57
Lapland	169	7,976	50.2	-1.3	50.21
Åland	30	923	19.9	1.4	1) ..

1) [...] Data too uncertain for presentation.

Appendix table 2.1. Nights spend in all establishments, April 2015

Region	Nights spend, total	Change of nights spend, total, %	Nights spend, residents	Change of nights spend, residents, %	Nights spend, non-residents	Change of nights spend, non-residents, %
Whole country	1,351,340	0.1	1,061,838	1.4	289,502	-4.4
Mainland Finland	1,334,890	0.0	1,055,289	1.4	279,601	-4.7
Uusimaa	358,414	4.9	203,634	7.1	154,780	2.2
Varsinais-Suomi	78,161	-3.0	63,968	-3.8	14,193	0.7
Satakunta	20,084	-0.9	16,408	-2.8	3,676	8.1
Kanta-Häme	26,644	-1.5	24,664	1.8	1,980	-29.5
Pirkanmaa	98,239	4.4	86,036	6.3	12,203	-7.5
Päijät-Häme	39,074	-5.6	34,388	-8.5	4,686	22.0
Kymenlaakso	21,667	13.5	16,081	29.3	5,586	-16.1
South Karelia	37,633	-12.9	27,832	34.1	9,801	-56.3
Etelä-Savo	32,005	-7.1	28,914	-1.8	3,091	-38.5
Pohjois-Savo	51,658	0.3	47,677	0.3	3,981	0.2
North Karelia	24,400	-4.8	21,441	-2.5	2,959	-18.6
Central Finland	62,333	1.4	57,850	2.3	4,483	-8.9
South Ostrobothnia	40,557	-3.7	39,356	-1.1	1,201	-48.6
Ostrobothnia	29,825	10.7	24,476	9.7	5,349	15.5
Central Ostrobothnia	9,870	-2.3	8,886	-5.4	984	38.0
North Ostrobothnia	123,038	1.4	110,370	1.2	12,668	3.7
Kainuu	69,202	-6.3	67,155	-6.0	2,047	-15.2
Lapland	212,086	-3.4	176,153	-4.2	35,933	0.6
Åland	16,450	5.4	6,549	2.8	9,901	7.2

Appendix table 2.2. Nights spend in all establishments, January-April 2015

Region	Nights spend, total	Change of nights spend, total, %	Nights spend, residents	Change of nights spend, residents, %	Nights spend, non-residents	Change of nights spend, non-residents, %
Whole country	5,654,279	-2.2	4,067,821	1.6	1,586,458	-11.0
Mainland Finland	5,614,404	-2.3	4,051,619	1.6	1,562,785	-11.2
Uusimaa	1,405,021	0.2	814,372	5.0	590,649	-5.7
Varsinais-Suomi	276,756	-1.0	226,096	-0.5	50,660	-3.5
Satakunta	79,641	-1.3	62,620	-4.3	17,021	11.6
Kanta-Häme	95,385	-0.6	85,832	0.7	9,553	-11.2
Pirkanmaa	393,955	4.7	347,959	8.1	45,996	-15.7
Päijät-Häme	160,611	-11.9	136,713	-10.2	23,898	-20.7
Kymenlaakso	70,349	-4.4	49,299	10.4	21,050	-27.3
South Karelia	156,584	-19.7	101,482	18.3	55,102	-49.5
Etelä-Savo	140,820	-11.3	115,416	0.9	25,404	-42.8
Pohjois-Savo	244,907	-0.7	212,414	3.5	32,493	-21.5
North Karelia	120,153	-7.1	88,873	-4.1	31,280	-14.7
Central Finland	297,133	-5.3	253,456	-2.0	43,677	-20.9
South Ostrobothnia	144,656	-3.5	138,676	-2.3	5,980	-24.8
Ostrobothnia	103,088	10.2	81,182	9.6	21,906	12.3
Central Ostrobothnia	34,873	-2.5	31,225	-3.5	3,648	6.2
North Ostrobothnia	523,020	1.0	426,423	3.5	96,597	-8.8
Kainuu	364,731	-1.9	334,166	1.6	30,565	-28.6
Lapland	1,002,721	-3.9	545,415	-4.1	457,306	-3.6
Åland	39,875	5.9	16,202	4.6	23,673	6.8

Appendix table 3.1. Hotel capacity and capacity utilization, April 2015

Region / municipality	Number of establishments	Number of bedrooms	Occupancy rate of bedrooms, %	Change compared to previous year, %-units	Room price, euros (incl. VAT 10 %)	¹⁾ RevPAR, euros (incl. VAT 10 %)
Whole country	613	50,689	47.0	0.7	90.49	42.51
Mainland Finland	600	49,901	47.2	0.7	90.51	42.74
Uusimaa	113	14,347	55.1	1.8	97.27	53.64
Espoo	11	1,193	47.9	2.4	83.85	40.14
Helsinki	52	8,531	56.7	0.2	101.94	57.78
Vantaa	11	2,236	68.2	3.2	97.00	66.19
Varsinais-Suomi	37	2,948	50.3	0.2	82.98	41.72
Turku	19	2,038	53.1	0.1	85.29	45.26
Satakunta	24	1,117	42.0	3.7	84.40	35.41
Pori	9	634	44.8	3.3	84.69	37.91
Kanta-Häme	18	1,358	36.5	-1.6	76.69	28.00
Hämeenlinna	8	724	35.3	0.1	90.48	31.91
Pirkanmaa	42	3,862	48.7	2.7	92.86	45.24
Tampere	25	2,991	52.7	1.8	94.43	49.73
Päijät-Häme	15	1,726	48.8	1.1	82.91	40.42
Lahti	6	646	44.8	3.0	84.16	37.73
Kymenlaakso	16	934	38.5	3.1	88.93	34.23
Kouvola	6	426	40.6	7.0	81.14	32.90
South Karelia	16	1,320	46.3	-8.8	91.07	42.19
Lappeenranta	8	750	57.8	-7.6	87.28	50.43
Etelä-Savo	28	1,520	36.0	-0.1	72.46	26.11
Mikkeli	8	549	40.0	-2.9	85.73	34.33
Pohjois-Savo	30	2,314	42.3	-0.4	85.02	35.92
Kuopio	15	1,379	47.1	-0.0	88.85	41.87
North Karelia	21	1,175	38.3	-0.5	88.71	34.00
Joensuu	7	611	51.4	1.8	88.81	45.61
Central Finland	27	2,625	44.9	-0.2	77.61	34.87
Jyväskylä	11	1,363	45.3	0.7	85.32	38.66
South Ostrobothnia	22	1,418	41.9	0.1	74.83	31.34
Seinäjoki	6	553	45.7	2.0	83.50	38.13
Ostrobothnia	22	1,236	46.4	2.7	89.13	41.34
Vaasa	8	795	56.2	5.6	90.67	50.91
Central Ostrobothnia	9	478	39.4	-0.3	84.20	33.19
Kokkola	5	361	44.2	-0.8	86.46	38.20
North Ostrobothnia	48	3,412	50.5	5.6	85.86	43.38
Kuusamo	11	774	43.8	-1.0	106.33	46.57
Oulu	12	1,540	60.6	8.4	87.62	53.07
Kainuu	20	1,763	38.3	-2.3	76.34	29.25
Kajaani	6	409	32.3	-3.0	80.30	25.95
Sotkamo	6	1,097	45.0	-2.4	75.41	33.93
Lapland	92	6,348	40.6	-2.4	99.62	40.45
Rovaniemi	12	1,241	40.5	2.8	73.66	29.84
Åland	13	788	31.1	3.6
Maarianhamina	6	488	46.3	4.3

1) RevPar = Average accommodation sales revenue per available room. Calculation formula: RevPar = Average room price * Occupancy rate. [...] Data too uncertain for presentation.

Appendix table 3.2. Hotel capacity and capacity utilization, January-April 2015

Region / municipality	Number of establishments	Number of bedrooms	Occupancy rate of bedrooms, %	Change compared to previous year, %-units	Room price, euros (incl. VAT 10 %)	¹⁾ RevPAR, euros (incl. VAT 10 %)
Whole country	611	50,509	48.7	0.2	92.83	45.25
Mainland Finland	601	49,872	49.0	0.2	92.85	45.52
Uusimaa	112	14,282	55.4	-0.2	98.56	54.64
Espoo	11	1,194	47.9	0.2	83.73	40.13
Helsinki	52	8,469	58.9	-0.2	102.68	60.43
Vantaa	11	2,236	65.6	-3.4	100.62	66.03
Varsinais-Suomi	37	2,939	45.7	0.0	83.16	37.97
Turku	19	2,036	47.3	-0.5	85.86	40.62
Satakunta	24	1,116	42.0	4.3	83.22	34.92
Pori	9	635	44.4	4.8	82.33	36.55
Kanta-Häme	18	1,321	34.7	0.2	75.43	26.14
Hämeenlinna	8	726	32.3	-0.6	88.43	28.55
Pirkanmaa	42	3,876	46.3	1.9	92.75	42.94
Tampere	25	2,990	49.5	1.3	94.02	46.57
Päijät-Häme	15	1,742	41.3	-1.5	83.16	34.32
Lahti	6	646	45.9	-0.3	90.52	41.58
Kymenlaakso	16	888	36.8	0.9	87.71	32.29
Kouvola	6	427	36.1	1.0	81.90	29.54
South Karelia	17	1,327	42.3	-7.9	93.14	39.42
Lappeenranta	8	750	52.7	-0.7	84.02	44.31
Etelä-Savo	28	1,551	35.6	-1.8	71.86	25.58
Mikkeli	8	552	42.5	-0.9	78.49	33.35
Pohjois-Savo	31	2,341	45.6	-0.3	86.67	39.48
Kuopio	16	1,409	52.2	0.8	90.59	47.33
North Karelia	22	1,196	46.0	0.9	91.25	42.02
Joensuu	7	611	59.1	2.7	91.70	54.15
Central Finland	27	2,624	48.4	0.3	86.45	41.83
Jyväskylä	11	1,364	49.6	-1.2	88.63	44.00
South Ostrobothnia	22	1,436	43.6	0.8	74.65	32.51
Seinäjoki	6	552	49.1	1.9	83.87	41.22
Ostrobothnia	22	1,235	46.4	4.7	85.28	39.61
Vaasa	8	794	54.3	4.5	87.02	47.27
Central Ostrobothnia	9	478	38.5	-1.9	84.09	32.39
Kokkola	5	361	42.8	-2.8	86.84	37.20
North Ostrobothnia	48	3,406	52.0	4.2	87.84	45.68
Kuusamo	11	774	48.6	0.2	105.08	51.03
Oulu	12	1,540	61.4	5.8	88.60	54.41
Kainuu	20	1,768	47.9	-0.6	81.58	39.05
Kajaani	6	409	36.7	2.3	78.33	28.78
Sotkamo	6	1,105	57.6	-1.4	86.64	49.92
Lapland	92	6,348	53.9	-1.3	106.05	57.17
Rovaniemi	13	1,291	63.4	-3.0	98.83	62.63
Åland	11	637	25.5	3.1
Maarianhamina	5	391	36.9	4.4

1) RevPar = Average accommodation sales revenue per available room. Calculation formula: RevPar = Average room price
 *Occupancy rate.[...] Data too uncertain for presentation.

Appendix table 4.1. Nights spend in hotels, April 2015

Region / municipality	Nights spend, total	Change of nights spend, total, %	Nights spend, residents	Change of nights spend, residents, %	Nights spend, non-residents	Change of nights spend, non-residents, %
Whole country	1,126,262	0.1	870,073	1.9	256,189	-5.6
Mainland Finland	1,114,429	0.0	864,905	1.9	249,524	-5.9
Uusimaa	336,163	4.3	192,117	7.8	144,046	-0.0
Espoo	23,808	9.3	15,851	11.7	7,957	4.9
Helsinki	204,406	0.4	99,357	1.9	105,049	-1.0
Vantaa	64,755	5.9	41,991	15.5	22,764	-8.3
Varsinais-Suomi	69,595	-1.8	56,940	-3.2	12,655	5.0
Turku	49,681	-2.5	39,982	-5.1	9,699	10.5
Satakunta	17,560	-0.6	14,029	-2.9	3,531	9.7
Pori	10,952	6.5	9,306	7.9	1,646	-1.0
Kanta-Häme	23,740	-1.0	21,779	1.5	1,961	-22.3
Hämeenlinna	12,443	-1.3	11,571	2.7	872	-34.4
Pirkanmaa	87,528	6.0	76,259	8.5	11,269	-8.2
Tampere	69,805	5.9	59,446	8.0	10,359	-4.7
Päijät-Häme	35,802	-4.6	31,861	-6.4	3,941	12.9
Lahti	11,610	-6.4	9,049	-14.4	2,561	39.5
Kymenlaakso	14,702	4.4	10,392	18.6	4,310	-18.9
Kouvola	7,066	12.7	5,623	12.4	1,443	13.7
South Karelia	32,277	-15.9	23,780	39.3	8,497	-60.2
Lappeenranta	22,039	-6.6	17,871	48.7	4,168	-64.0
Etelä-Savo	24,491	-9.5	22,621	-6.7	1,870	-33.5
Mikkeli	9,839	-11.5	8,817	-6.6	1,022	-39.0
Pohjois-Savo	47,175	0.3	44,122	0.5	3,053	-1.6
Kuopio	30,266	2.8	28,386	3.4	1,880	-6.2
North Karelia	21,651	2.1	19,030	5.7	2,621	-18.0
Joensuu	13,060	10.4	11,055	18.9	2,005	-20.6
Central Finland	57,456	-0.8	52,992	-0.3	4,464	-6.0
Jyväskylä	27,337	1.9	24,553	4.0	2,784	-13.2
South Ostrobothnia	31,316	-2.2	30,309	0.7	1,007	-48.0
Seinäjoki	10,706	-3.8	10,057	1.8	649	-48.0
Ostrobothnia	25,251	13.4	20,016	12.7	5,235	16.3
Vaasa	19,173	12.7	14,916	12.1	4,257	14.5
Central Ostrobothnia	8,222	-0.1	7,573	-1.9	649	27.3
Kokkola	6,556	1.3	6,047	1.0	509	5.4
North Ostrobothnia	85,913	2.8	75,413	2.1	10,500	8.3
Kuusamo	23,423	-13.7	20,965	-10.4	2,458	-34.2
Oulu	42,237	13.0	37,044	13.3	5,193	10.7
Kainuu	50,271	-8.1	48,898	-7.7	1,373	-20.4
Kajaani	5,455	-15.6	4,947	-18.8	508	37.7
Sotkamo	42,579	-6.3	42,143	-5.8	436	-38.6
Lapland	145,316	-5.1	116,774	-6.1	28,542	-0.6
Rovaniemi	23,236	21.8	14,489	24.1	8,747	18.2
Åland	11,833	6.8	5,168	2.5	6,665	10.4
Maarianhamina	9,641	7.1	4,769	9.1	4,872	5.2

Appendix table 4.2. Nights spend in hotels, January-April 2015

Region / municipality	Nights spend, total	Change of nights spend, total, %	Nights spend, residents	Change of nights spend, residents, %	Nights spend, non-residents	Change of nights spend, non-residents, %
Whole country	4,792,347	-1.6	3,411,739	2.8	1,380,608	-10.9
Mainland Finland	4,761,651	-1.6	3,399,038	2.8	1,362,613	-11.2
Uusimaa	1,339,551	0.2	780,492	5.7	559,059	-6.5
Espoo	95,680	1.0	61,525	13.9	34,155	-16.1
Helsinki	837,470	0.1	428,711	4.1	408,759	-3.8
Vantaa	255,968	-2.3	167,306	5.9	88,662	-14.8
Varsinais-Suomi	249,238	-0.6	204,577	0.4	44,661	-4.7
Turku	174,058	-0.5	141,854	0.5	32,204	-4.6
Satakunta	71,641	0.0	55,573	-3.4	16,068	14.1
Pori	44,485	5.7	35,777	3.4	8,708	16.5
Kanta-Häme	87,178	0.9	78,084	2.2	9,094	-8.5
Hämeenlinna	45,471	-2.4	40,834	0.4	4,637	-21.5
Pirkanmaa	342,129	6.6	299,036	10.2	43,093	-12.8
Tampere	268,615	7.9	229,378	11.8	39,237	-10.3
Päijät-Häme	140,279	-10.1	119,791	-8.2	20,488	-20.0
Lahti	50,317	-9.6	36,567	-10.4	13,750	-7.7
Kymenlaakso	52,016	-12.6	36,202	-1.1	15,814	-31.0
Kouvola	25,671	-5.9	20,180	0.4	5,491	-23.4
South Karelia	128,495	-23.2	84,625	19.3	43,870	-54.5
Lappeenranta	85,548	-13.0	64,507	22.0	21,041	-53.7
Etelä-Savo	102,601	-7.8	91,335	-1.6	11,266	-38.9
Mikkeli	42,580	-5.7	36,690	2.9	5,890	-38.1
Pohjois-Savo	220,485	0.0	196,138	4.2	24,347	-24.4
Kuopio	153,180	3.0	135,996	8.0	17,184	-24.3
North Karelia	104,695	-2.6	78,389	0.6	26,306	-10.8
Joensuu	58,270	-0.1	41,354	1.2	16,916	-3.0
Central Finland	276,075	-5.7	235,201	-2.1	40,874	-22.4
Jyväskylä	123,071	-2.0	108,057	0.9	15,014	-18.5
South Ostrobothnia	126,267	-1.9	121,369	-0.9	4,898	-21.4
Seinäjoki	45,083	-2.0	41,852	-1.8	3,231	-4.6
Ostrobothnia	91,977	10.6	70,405	9.3	21,572	15.1
Vaasa	68,727	4.8	50,469	1.1	18,258	16.8
Central Ostrobothnia	30,073	-3.1	27,751	-3.2	2,322	-2.3
Kokkola	24,284	-1.7	22,248	-2.0	2,036	1.0
North Ostrobothnia	378,104	3.5	305,860	6.1	72,244	-6.3
Kuusamo	114,472	-2.5	86,596	5.1	27,876	-20.4
Oulu	176,231	7.4	150,906	10.1	25,325	-6.4
Kainuu	266,631	-0.3	244,487	4.1	22,144	-31.8
Kajaani	26,252	1.8	23,789	3.2	2,463	-10.1
Sotkamo	228,561	0.7	212,761	5.4	15,800	-37.1
Lapland	754,216	-3.9	369,723	-3.6	384,493	-4.2
Rovaniemi	164,072	3.1	58,220	10.3	105,852	-0.4
Åland	30,696	9.6	12,701	7.4	17,995	11.1
Maarianhamina	25,922	12.9	11,943	11.0	13,979	14.7

Appendix table 5.1. Visitor arrivals and nights spend by country of residence, April 2015

Country of residence	Visitor arrivals in all accommodation establishments	Nights spend in all accommodation establishments	Change of nights spend in all accommodation establishments, %	Nights spend in hotels	Change of nights spend in hotels, %
Total	713,148	1,351,340	0.1	1,126,262	0.1
Finland	569,874	1,061,838	1.4	870,073	1.9
Foreign countries	143,274	289,502	-4.4	256,189	-5.6
Sweden	20,221	33,531	0.7	30,663	2.6
Germany	11,617	26,315	11.7	24,640	10.4
Russia	20,208	34,744	-41.1	28,735	-42.0
United Kingdom	9,983	23,102	-3.0	20,835	0.3
United States	5,385	10,840	-9.3	10,582	-8.3
Norway	7,088	14,129	-8.1	11,385	-13.5
Netherlands	4,027	7,403	-5.4	6,970	-4.6
Italy	2,897	6,377	6.0	6,007	12.8
France	3,788	9,260	4.0	7,746	-2.1
Japan	3,600	6,187	12.4	5,974	12.9
Estonia	5,374	12,643	5.0	8,862	-0.3
Switzerland	2,591	5,610	-2.3	5,144	-6.4
Spain	2,929	6,773	-5.5	6,182	-4.8
China	4,115	6,874	49.3	6,687	49.8

Appendix table 5.2. Visitor arrivals and nights spend by country of residence, January-April 2015

Country of residence	Visitor arrivals in all accommodation establishments	Nights spend in all accommodation establishments	Change of nights spend in all accommodation establishments, %	Nights spend in hotels	Change of nights spend in hotels, %
Total	2,881,007	5,654,279	-2.2	4,792,347	-1.6
Finland	2,206,354	4,067,821	1.6	3,411,739	2.8
Foreign countries	674,653	1,586,458	-11.0	1,380,608	-10.9
Sweden	71,080	115,103	5.1	109,604	5.8
Germany	57,668	147,838	8.3	135,771	8.4
Russia	120,038	300,106	-45.7	229,040	-47.7
United Kingdom	51,575	140,931	1.3	120,986	0.4
United States	20,431	45,284	4.1	44,019	5.0
Norway	24,676	51,448	5.1	42,693	-0.7
Netherlands	23,204	63,832	-4.5	53,207	-1.7
Italy	14,195	31,740	12.2	29,458	13.7
France	33,181	104,890	7.8	96,400	7.9
Japan	27,754	51,568	-12.5	50,149	-12.1
Estonia	23,501	59,239	4.1	45,503	-1.8
Switzerland	14,100	44,293	3.4	30,627	-2.6
Spain	10,671	26,268	-0.6	24,059	-0.2
China	16,941	31,280	34.5	30,278	38.0

Appendix table 6. Nights spend in all establishments, 2015

Month	Nights spend, total	Change of nights spend, total, %	Nights spend, residents	Change of nights spend, residents, %	Nights spend, non-residents	Change of nights spend, non-residents, %
Total	5,654,279	-2.2	4,067,821	1.6	1,586,458	-11.0
January	1,277,415	-7.8	788,921	3.0	488,494	-21.1
February	1,450,661	1.8	1,055,264	3.3	395,397	-1.9
March	1,574,863	-3.0	1,161,798	-0.5	413,065	-9.6
April	1,351,340	0.1	1,061,838	1.4	289,502	-4.4

Inquiries

Marjut Tuominen 029 551 3556

Ossi Nurmi 029 551 2984

Director in charge:

Hannele Orjala

liikenne.matkailu@stat.fi

www.stat.fi

Source: Accommodation Statistics. Statistics Finland