

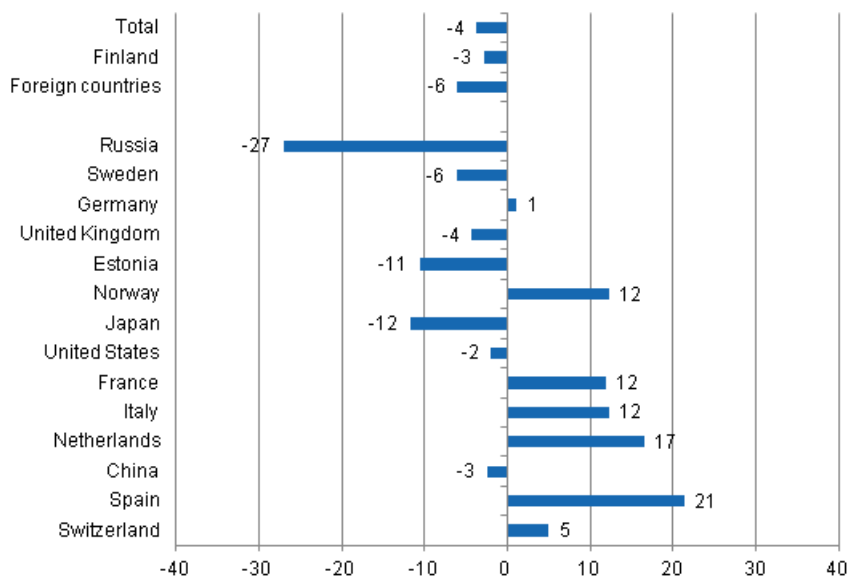
Accommodation statistics

2014, November

Nights spent by foreign tourists in Finland down by 6.1 per cent in November 2014

The number of recorded nights spent by foreign tourists at Finnish accommodation establishments in November 2014 was 359,000, which was 6.1 per cent fewer than in November 2013. Overnight stays by resident tourists decreased by 2.9 per cent and accommodation establishments recorded 938,000 of them. In November 2014, the total number of nights spent in hotels was just under 1.3 million, which was 3.8 per cent lower than twelve months earlier. These figures are preliminary data from Statistics Finland's statistics on accommodation establishments and they have been collected from accommodation establishments with at least 20 beds or caravan pitches with electricity connection, and youth hostels.

Change in overnight stays in November 2014/2013, %



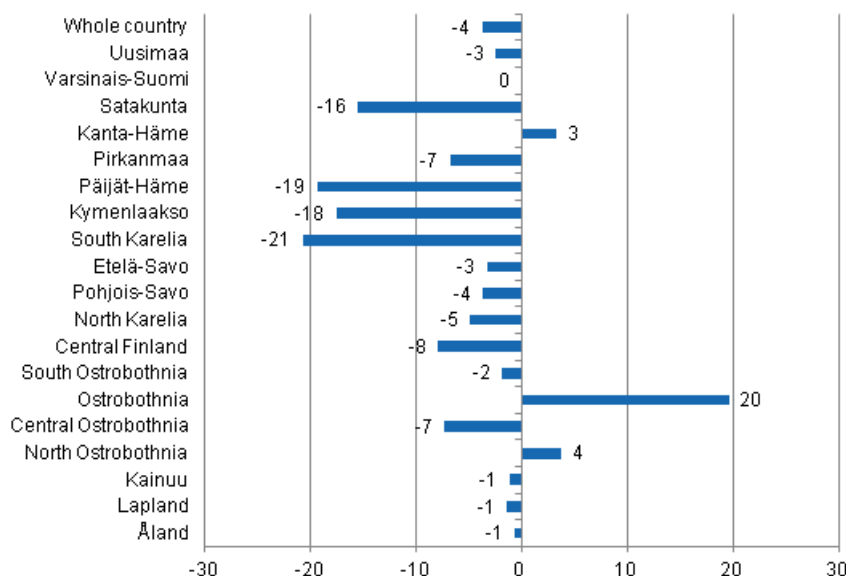
No end is visible for the steep decline in overnight stays by Russian visitors. Altogether, close on 94,000 overnight stays were recorded for them at Finnish accommodation establishments, which was still 27.1 per cent lower than in November 2013. However, they have maintained their position as the largest group

of foreign tourists. Swedes came next with 29,500 overnight stays, even though the drop from 2013 amounted to 6.2 per cent. Altogether 25,000 overnight stays were recorded for German visitors, and they made up the third largest group of foreign tourists. Overnight stays by German tourists increased by 1.1 per cent compared with November 2013. Overnight stays recorded at accommodation establishments for British visitors totalled 22,000, which was 4.4 per cent down from one year before.

Nearly 15,000 overnight stays each were recorded for Norwegian and Estonian tourists. Overnight stays by Norwegian tourists increased by 12.2 per cent, while those by Estonian tourists decreased by 10.6 per cent. Inbound tourism from far-off countries also declined in November. Overall, 11,000 to 12,000 nights were recorded for visitors from the USA and Japan. Overnight stays by tourists from the USA decreased by 2.0 per cent and those by Japanese visitors by 11.7 per cent. By contrast, overnight stays recorded for Dutch visitors increased by 16.6 per cent year-on-year and totalled good 7,000. Overnight stays by Spanish tourists increased most in November, by 21.4 per cent but only 5,500 overnight stays were recorded for them.

By region, the total number of overnight stays increased in November most in Ostrobothnia, up by 19.6 per cent. In Kanta-Häme and North Ostrobothnia growth amounted to three to four per cent. In all other regions, the numbers of overnight stays went down. The biggest drop in overnight stays was recorded in South Karelia, 20.7 per cent. In Päijät-Häme and Kymenlaakso, the drop was nearly one-fifth in each. In Satakunta, overnight stays decreased by 15.5 per cent and in Central Finland by 8.0 per cent. Overnight stays in the whole country declined by 3.8 per cent from last year.

Change in overnight stays in November by region 2014 / 2013, %



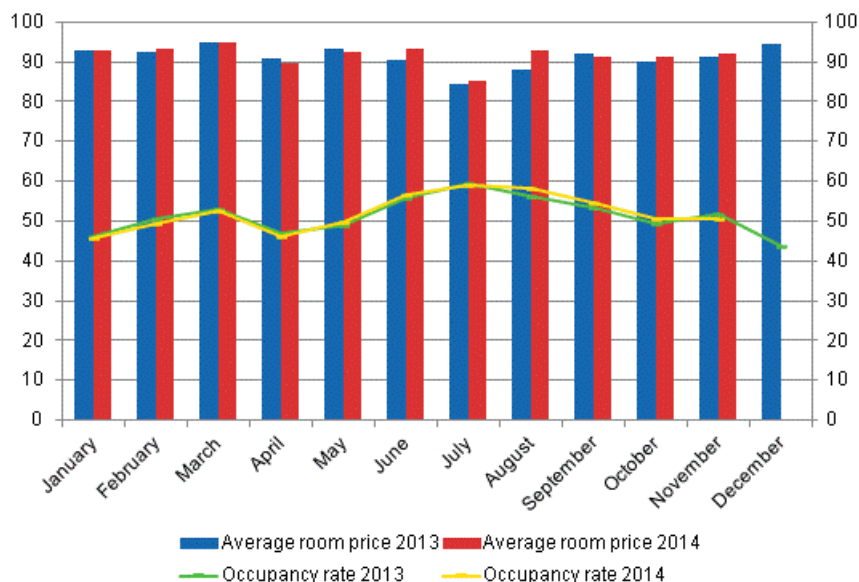
Nights spent in hotels decreased by 3.2 per cent in November 2014

In November 2014, the total number of nights spent in hotels was just under 1.2 million, which was 3.2 per cent lower than twelve months earlier. Overnight stays by resident tourists decreased by 2.8 per cent and accommodation establishments recorded nearly 841,000 of them. The number of recorded nights spent by non-resident tourists in hotels totalled 321,000, which was 4.4 per cent fewer than in November 2013.

The occupancy rate of hotel rooms in the whole country was 50.7 per cent in November. One year earlier, it was 51.6 per cent. Among the regions, the highest occupancy rates of hotel rooms were measured in Uusimaa, 65.1 per cent, and Ostrobothnia, 55.2 per cent. In Vantaa, the hotel room occupancy rate rose to 66.8 per cent and in Vaasa to 62.5 per cent. In Joensuu, the hotel room occupancy rate also reached 68.2 per cent. The hotel room occupancy rate in Helsinki was 72.8 per cent.

In November, the realised average price of a hotel room was EUR 92.14 per day for the whole country. Twelve months previously, it was EUR 91.07.

Hotel room occupancy rate and the monthly average price



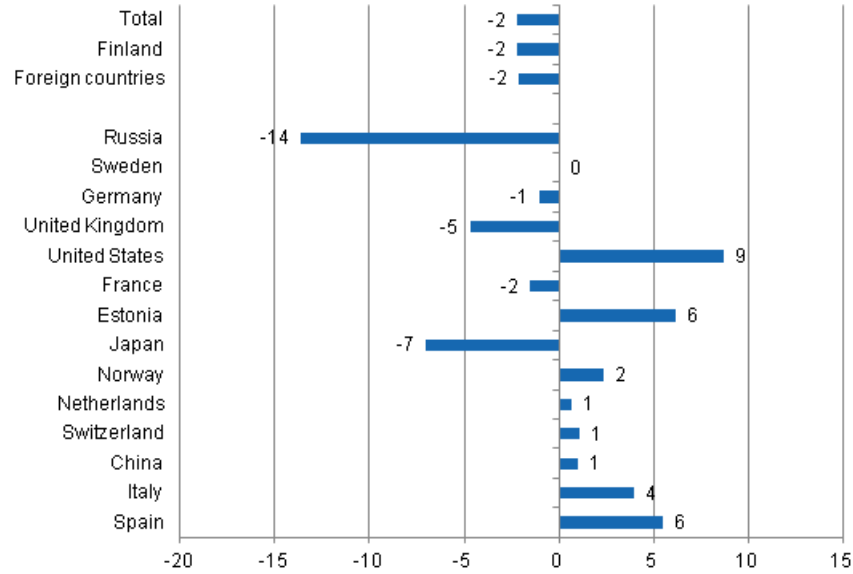
Total number of nights spent at all accommodation establishments fell by 2.2 per cent in January to November

Between January and November 2014, the number of nights spent at accommodation establishments in Finland totalled 18.5 million. This was 2.2 per cent lower than in the corresponding period one year earlier. Overnight stays by both resident and non-resident tourists decreased by around two per cent each. Nearly 13.3 million overnight stays were recorded for resident tourists and 5.2 million overnight stays were recorded for non-resident tourists.

Between January and November 2014, the number of nights spent by Russian visitors at accommodation establishments in Finland totalled close on 1.3 million, which was 13.6 per cent down on the respective time period of last year. They were still, by far, the largest group of foreign visitors in January to November, while Swedish visitors came next with half a million overnight stays. The overnight stays of Swedish visitors remained on the same level as in the respective time period of last year. German visitors made up the third largest group with close on 470,000 overnight stays. The number of nights recorded for them at Finnish accommodation establishments was one per cent lower than one year earlier.

Overnight stays by British tourists decreased by 4.7 per cent from the corresponding period last year and amounted to close on 311,000. Among the most important countries of inbound tourism into Finland, overnight stays of visitors from the United States increased most, or by 8.7 per cent, and a total of nearly 194,000 overnight stays were recorded for them in January to November. Overnight stays by visitors from Estonia and Spain both increased by around six per cent. By contrast, overnight stays of Japanese visitors decreased by seven per cent from the respective time period of last year.

Change in overnight stays in January-November 2014/2013, %



Contents

Tables

Appendix tables

Appendix table 1.1. Capacity and its utilization, November 2014.....	6
Appendix table 1.2. Capacity and its utilization, January-November 2014.....	7
Appendix table 2.1. Nights spend in all establishments, November 2014.....	8
Appendix table 2.2. Nights spend in all establishments, January-November 2014.....	9
Appendix table 3.1. Hotel capacity and capacity utilization, November 2014.....	10
Appendix table 3.2. Hotel capacity and capacity utilization, January-November 2014.....	11
Appendix table 4.1. Nights spend in hotels, November 2014.....	12
Appendix table 4.2. Nights spend in hotels, January-November 2014.....	13
Appendix table 5.1. Visitor arrivals and nights spend by country of residence, November 2014.....	14
Appendix table 5.2. Visitor arrivals and nights spend by country of residence, January-November 2014.....	14
Appendix table 6. Nights spend in all establishments, 2014.....	15

Appendix tables

Appendix table 1.1. Capacity and its utilization, November 2014

Region	Number of establishments	Number of bedrooms	Occupancy rate of bedrooms, %	Change of the occupancy rate compared to previous year, %-units	Average price of nights spend, in euros (incl. VAT 10 %)
Whole country	1,076	58,196	46.8	-0.9	59.19
Mainland Finland	1,050	57,392	47.1	-0.9	59.21
Uusimaa	136	14,534	64.4	-0.7	73.82
Varsinais-Suomi	60	3,544	48.4	2.2	54.58
Satakunta	41	1,547	33.4	-2.6	61.51
Kanta-Häme	31	1,440	39.7	1.8	47.95
Pirkanmaa	69	4,461	49.8	-2.2	60.88
Päijät-Häme	35	1,999	34.8	-4.7	52.21
Kymenlaakso	28	1,143	45.6	-11.5	53.13
South Karelia	37	1,719	44.8	-4.1	52.67
Etelä-Savo	82	2,327	32.9	-4.3	41.84
Pohjois-Savo	50	2,523	44.4	-1.8	52.28
North Karelia	48	1,442	43.6	1.9	55.21
Central Finland	46	3,041	44.4	1.9	55.76
South Ostrobothnia	48	1,784	41.4	-1.6	42.49
Ostrobothnia	30	1,308	53.5	6.7	61.38
Central Ostrobothnia	14	533	43.9	-5.3	58.85
North Ostrobothnia	96	4,387	44.3	-1.4	48.37
Kainuu	39	2,136	36.9	0.6	43.25
Lapland	160	7,524	30.6	-0.0	45.73
Åland	26	804	21.2	-0.5	¹⁾ ..

1) [...] Data too uncertain for presentation.

Appendix table 1.2. Capacity and its utilization, January-November 2014

Region	Number of establishments	Number of bedrooms	Occupancy rate of bedrooms, %	Change of the occupancy rate compared to previous year, %-units	Average price of nights spend, in euros (incl. VAT 10 %)
Whole country	1,198	61,035	48.4	0.1	51.41
Mainland Finland	1,149	59,799	48.7	0.1	51.53
Uusimaa	142	14,714	63.0	0.5	66.25
Varsinais-Suomi	73	3,777	49.9	1.7	47.26
Satakunta	43	1,621	38.2	-2.8	52.09
Kanta-Häme	34	1,554	36.7	0.0	46.04
Pirkanmaa	73	4,471	48.9	0.2	52.08
Päijät-Häme	38	2,071	43.0	2.3	48.96
Kymenlaakso	30	1,168	42.7	-2.5	46.35
South Karelia	39	1,876	50.8	-1.3	47.56
Etelä-Savo	87	2,584	39.3	-1.8	36.88
Pohjois-Savo	53	2,668	47.1	-1.0	45.57
North Karelia	53	1,585	44.1	1.5	44.66
Central Finland	53	3,271	47.8	1.8	51.04
South Ostrobothnia	52	1,883	42.0	-0.9	39.57
Ostrobothnia	33	1,383	46.9	0.0	50.32
Central Ostrobothnia	17	589	43.6	0.2	49.60
North Ostrobothnia	100	4,485	45.2	1.7	40.11
Kainuu	47	2,258	41.0	-3.2	36.87
Lapland	182	7,841	38.7	-0.5	43.45
Åland	49	1,235	34.3	1.8	1) ..

1) [...] Data too uncertain for presentation.

Appendix table 2.1. Nights spend in all establishments, November 2014

Region	Nights spend, total	Change of nights spend, total, %	Nights spend, residents	Change of nights spend, residents, %	Nights spend, non-residents	Change of nights spend, non-residents, %
Whole country	1,297,137	-3.8	938,277	-2.9	358,860	-6.1
Mainland Finland	1,289,191	-3.8	934,672	-2.9	354,519	-6.2
Uusimaa	401,001	-2.5	236,803	-3.2	164,198	-1.4
Varsinais-Suomi	78,516	-0.1	64,713	0.1	13,803	-0.8
Satakunta	20,208	-15.5	16,424	-16.7	3,784	-9.8
Kanta-Häme	27,587	3.3	23,929	1.9	3,658	13.2
Pirkanmaa	104,236	-6.8	91,516	-5.0	12,720	-17.8
Päijät-Häme	33,799	-19.4	28,717	-20.4	5,082	-13.9
Kymenlaakso	24,180	-17.6	16,831	-7.0	7,349	-34.7
South Karelia	45,307	-20.7	21,643	-0.1	23,664	-33.3
Etelä-Savo	39,813	-3.3	32,012	7.7	7,801	-32.0
Pohjois-Savo	54,955	-3.7	50,006	-3.2	4,949	-8.0
North Karelia	28,003	-4.9	21,715	-8.0	6,288	7.4
Central Finland	58,302	-8.0	52,274	-9.1	6,028	2.7
South Ostrobothnia	41,182	-1.9	39,240	-2.9	1,942	22.2
Ostrobothnia	29,217	19.6	22,877	21.3	6,340	13.8
Central Ostrobothnia	10,691	-7.3	9,353	-12.5	1,338	58.5
North Ostrobothnia	106,443	3.7	78,737	1.4	27,706	10.8
Kainuu	60,507	-1.2	55,874	-0.4	4,633	-9.6
Lapland	125,244	-1.4	72,008	0.1	53,236	-3.4
Åland	7,946	-0.7	3,605	1.9	4,341	-2.7

Appendix table 2.2. Nights spend in all establishments, January-November 2014

Region	Nights spend, total	Change of nights spend, total, %	Nights spend, residents	Change of nights spend, residents, %	Nights spend, non-residents	Change of nights spend, non-residents, %
Whole country	18,484,435	-2.2	13,286,993	-2.2	5,197,442	-2.1
Mainland Finland	18,101,004	-2.1	13,137,658	-2.2	4,963,346	-2.0
Uusimaa	4,801,340	0.5	2,606,845	0.3	2,194,495	0.7
Varsinais-Suomi	1,124,383	-0.1	904,203	-2.1	220,180	9.3
Satakunta	375,574	-7.2	323,851	-7.2	51,723	-7.3
Kanta-Häme	355,883	2.6	317,028	3.4	38,855	-3.3
Pirkanmaa	1,311,100	-6.3	1,106,758	-6.4	204,342	-5.8
Päijät-Häme	546,425	-2.7	455,219	-5.0	91,206	10.6
Kymenlaakso	335,041	-4.9	234,688	3.4	100,353	-19.9
South Karelia	646,070	-8.7	336,161	-1.6	309,909	-15.4
Etelä-Savo	730,816	-5.2	544,005	-4.5	186,811	-7.3
Pohjois-Savo	788,441	-3.4	676,790	-3.4	111,651	-3.4
North Karelia	463,571	-3.9	363,646	-8.3	99,925	16.6
Central Finland	990,503	-4.1	849,527	-4.9	140,976	0.9
South Ostrobothnia	638,969	-3.4	614,036	-2.8	24,933	-15.4
Ostrobothnia	385,445	-4.2	312,074	-6.3	73,371	5.9
Central Ostrobothnia	160,473	0.8	142,060	-0.6	18,413	14.0
North Ostrobothnia	1,527,462	2.8	1,277,106	3.3	250,356	0.0
Kainuu	887,784	-3.3	803,674	-2.5	84,110	-10.1
Lapland	2,031,724	-2.6	1,269,987	-1.6	761,737	-4.2
Åland	383,431	-5.0	149,335	-6.7	234,096	-3.9

Appendix table 3.1. Hotel capacity and capacity utilization, November 2014

Region / municipality	Number of establishments	Number of bedrooms	Occupancy rate of bedrooms, %	Change compared to previous year, %-units	Room price, euros (incl. VAT 10 %)	¹⁾ RevPAR, euros (incl. VAT 10 %)
Whole country	616	50,762	50.7	-0.9	92.14	46.69
Mainland Finland	606	50,190	50.9	-0.9	92.15	46.93
Uusimaa	113	14,206	65.1	-1.0	105.16	68.45
Espoo	11	1,190	57.3	-0.3	86.92	49.77
Helsinki	52	8,398	72.8	-0.1	110.30	80.26
Vantaa	11	2,225	66.8	-2.2	103.65	69.25
Varsinais-Suomi	36	2,960	52.5	3.6	84.11	44.19
Turku	18	2,033	56.1	3.4	86.26	48.37
Satakunta	25	1,225	39.2	-2.8	81.77	32.04
Pori	9	729	41.1	-2.3	79.56	32.69
Kanta-Häme	18	1,256	44.0	2.4	73.32	32.24
Hämeenlinna	8	738	39.1	-2.4	88.67	34.67
Pirkanmaa	41	3,934	52.9	-2.6	95.57	50.54
Tampere	25	3,045	57.6	-4.0	98.03	56.45
Päijät-Häme	15	1,816	36.2	-4.6	80.17	29.05
Lahti	6	700	44.7	-2.8	86.63	38.70
Kymenlaakso	17	950	50.9	-12.5	83.52	42.50
Kouvola	7	442	50.4	-12.1	82.57	41.60
South Karelia	18	1,362	50.4	-4.0	95.19	47.96
Lappeenranta	8	750	59.9	4.5	87.58	52.45
Etelä-Savo	30	1,640	38.6	-4.0	69.96	27.03
Mikkeli	8	558	47.9	-1.0	76.06	36.41
Pohjois-Savo	30	2,314	45.9	-2.3	86.30	39.59
Kuopio	15	1,379	50.5	-1.0	87.34	44.10
North Karelia	22	1,209	49.2	1.3	83.10	40.89
Joensuu	7	611	68.2	4.2	84.73	57.82
Central Finland	27	2,736	47.9	2.5	79.82	38.20
Jyväskylä	10	1,351	56.9	-0.1	93.76	53.38
South Ostrobothnia	26	1,550	46.4	-5.1	72.98	33.83
Seinäjoki	8	625	50.8	-9.5	79.69	40.49
Ostrobothnia	23	1,251	55.2	6.3	85.59	47.24
Vaasa	8	794	62.5	7.5	87.02	54.37
Central Ostrobothnia	9	479	46.0	-5.5	82.35	37.87
Kokkola	5	362	53.7	-5.4	82.32	44.20
North Ostrobothnia	48	3,442	50.0	-0.4	84.73	42.38
Kuusamo	11	770	40.8	-3.7	95.80	39.13
Oulu	12	1,589	61.9	-2.1	87.37	54.10
Kainuu	19	1,743	41.5	-0.8	79.16	32.87
Kajaani	6	409	34.4	1.0	79.81	27.45
Sotkamo	6	1,103	48.7	-2.5	78.51	38.27
Lapland	89	6,117	33.6	0.0	84.87	28.49
Rovaniemi	12	1,230	46.1	-4.8	72.95	33.64
Åland	10	572	27.5	1.1
Maarianhamina	5	363	40.4	0.3

1) RevPar = Average accommodation sales revenue per available room. Calculation formula: RevPar = Average room price * Occupancy rate. [...] Data too uncertain for presentation.

Appendix table 3.2. Hotel capacity and capacity utilization, January-November 2014

Region / municipality	Number of establishments	Number of bedrooms	Occupancy rate of bedrooms, %	Change compared to previous year, %-units	Room price, euros (incl. VAT 10 %)	¹⁾ RevPAR, euros (incl. VAT 10 %)
Whole country	626	51,073	52.2	0.2	91.73	47.89
Mainland Finland	612	50,346	52.4	0.2	91.71	48.02
Uusimaa	113	14,253	63.7	0.4	101.61	64.73
Espoo	11	1,182	55.9	-1.3	83.39	46.60
Helsinki	52	8,468	69.2	0.2	106.99	74.08
Vantaa	11	2,204	68.8	0.8	98.58	67.82
Varsinais-Suomi	38	3,022	54.8	2.4	83.24	45.66
Turku	18	2,057	58.6	2.3	85.23	49.95
Satakunta	25	1,256	43.4	-1.8	87.56	37.99
Pori	9	727	45.2	-2.9	87.93	39.71
Kanta-Häme	19	1,267	41.1	1.9	79.67	32.73
Hämeenlinna	8	736	39.2	-0.1	91.58	35.94
Pirkanmaa	41	3,759	51.8	1.1	92.64	48.02
Tampere	25	2,782	56.4	0.8	94.49	53.33
Päijät-Häme	16	1,833	45.5	3.2	85.67	38.97
Lahti	6	720	45.9	-0.0	87.83	40.29
Kymenlaakso	17	951	44.2	-4.2	85.42	37.73
Kouvola	7	439	42.8	-2.7	81.95	35.11
South Karelia	18	1,417	55.8	-0.7	95.38	53.21
Lappeenranta	8	768	63.5	2.0	89.62	56.91
Etelä-Savo	31	1,774	42.9	-1.8	79.31	34.06
Mikkeli	8	581	48.3	-3.0	81.28	39.30
Pohjois-Savo	30	2,336	48.7	-1.8	85.69	41.71
Kuopio	15	1,403	53.3	-2.6	89.53	47.69
North Karelia	22	1,225	49.0	0.8	84.78	41.50
Joensuu	7	628	60.4	4.4	84.83	51.27
Central Finland	28	2,824	51.5	2.1	86.55	44.57
Jyväskylä	11	1,435	56.0	2.8	94.38	52.82
South Ostrobothnia	26	1,531	48.1	-1.5	76.19	36.66
Seinäjoki	8	620	51.9	-1.8	82.85	43.00
Ostrobothnia	22	1,227	50.1	-0.0	88.31	44.22
Vaasa	8	802	56.0	1.0	91.58	51.31
Central Ostrobothnia	10	499	46.4	0.9	79.67	36.93
Kokkola	5	366	53.7	1.7	81.53	43.76
North Ostrobothnia	47	3,452	49.2	2.2	85.34	41.96
Kuusamo	10	761	36.6	0.3	93.39	34.17
Oulu	12	1,590	61.1	3.2	87.25	53.31
Kainuu	19	1,735	45.8	-3.4	78.55	35.94
Kajaani	6	409	37.2	-2.1	78.15	29.04
Sotkamo	6	1,082	53.2	-4.9	80.67	42.93
Lapland	91	5,985	41.9	-0.7	88.24	36.95
Rovaniemi	11	1,194	52.6	0.2	81.03	42.60
Åland	14	727	41.8	-0.8
Maarianhamina	6	424	54.4	0.7

1) RevPar = Average accommodation sales revenue per available room. Calculation formula: RevPar = Average room price * Occupancy rate. [...] Data too uncertain for presentation.

Appendix table 4.1. Nights spend in hotels, November 2014

Region / municipality	Nights spend, total	Change of nights spend, total, %	Nights spend, residents	Change of nights spend, residents, %	Nights spend, non-residents	Change of nights spend, non-residents, %
Whole country	1,162,082	-3.2	840,932	-2.8	321,150	-4.4
Mainland Finland	1,155,197	-3.3	837,628	-2.8	317,569	-4.5
Uusimaa	389,017	-1.6	229,609	-2.7	159,408	0.1
Espoo	28,399	-4.1	17,611	1.3	10,788	-11.7
Helsinki	257,209	-0.0	139,816	-1.8	117,393	2.2
Vantaa	62,339	-3.9	38,368	-6.0	23,971	-0.1
Varsinais-Suomi	70,567	0.6	58,017	0.2	12,550	2.6
Turku	50,816	6.1	41,819	7.7	8,997	-0.8
Satakunta	18,298	-15.3	14,591	-18.0	3,707	-2.6
Pori	11,459	-10.5	9,444	-15.8	2,015	27.2
Kanta-Häme	25,534	3.2	22,160	1.7	3,374	14.5
Hämeenlinna	13,039	-13.0	11,585	-9.3	1,454	-34.2
Pirkanmaa	95,173	-4.8	83,465	-3.1	11,708	-15.0
Tampere	78,448	-1.3	67,897	1.1	10,551	-14.5
Päijät-Häme	31,220	-15.9	26,670	-17.6	4,550	-4.1
Lahti	12,772	-7.6	9,207	-11.5	3,565	4.4
Kymenlaakso	20,703	-19.6	14,638	-8.9	6,065	-37.4
Kouvola	9,579	-16.6	7,717	-12.7	1,862	-29.5
South Karelia	38,715	-22.2	19,262	-0.5	19,453	-36.0
Lappeenranta	23,608	-17.8	14,206	0.7	9,402	-35.6
Etelä-Savo	30,558	-2.2	26,492	4.1	4,066	-29.8
Mikkeli	12,316	-0.3	10,347	9.0	1,969	-31.2
Pohjois-Savo	50,795	-2.1	47,210	-1.1	3,585	-13.3
Kuopio	31,991	-2.0	29,695	-1.8	2,296	-3.9
North Karelia	25,667	-1.7	20,063	-5.2	5,604	13.0
Joensuu	16,870	3.2	12,638	-0.5	4,232	16.1
Central Finland	55,586	-6.1	49,699	-7.1	5,887	3.5
Jyväskylä	32,324	-6.4	28,910	-5.0	3,414	-16.5
South Ostrobothnia	36,510	-3.8	34,843	-4.5	1,667	13.7
Seinäjoki	13,438	-10.4	12,577	-11.1	861	2.0
Ostrobothnia	26,865	17.0	20,618	17.7	6,247	14.9
Vaasa	19,211	12.3	14,210	11.6	5,001	14.3
Central Ostrobothnia	9,222	-9.8	8,383	-11.9	839	18.3
Kokkola	7,641	-6.2	7,126	-5.2	515	-18.3
North Ostrobothnia	83,609	3.2	62,563	0.5	21,046	12.3
Kuusamo	23,458	14.4	10,101	10.9	13,357	17.2
Oulu	40,542	-5.3	34,555	-5.0	5,987	-6.9
Kainuu	48,225	-5.6	44,086	-5.1	4,139	-11.4
Kajaani	5,416	-3.1	4,764	-6.6	652	33.3
Sotkamo	41,292	-4.8	37,937	-3.7	3,355	-15.8
Lapland	98,933	0.3	55,259	1.1	43,674	-0.6
Rovaniemi	27,131	-8.7	16,239	-11.4	10,892	-4.3
Åland	6,885	6.7	3,304	12.1	3,581	2.2
Maarianhamina	5,873	13.3	3,076	15.1	2,797	11.4

Appendix table 4.2. Nights spend in hotels, January-November 2014

Region / municipality	Nights spend, total	Change of nights spend, total, %	Nights spend, residents	Change of nights spend, residents, %	Nights spend, non-residents	Change of nights spend, non-residents, %
Whole country	14,564,944	-2.0	10,267,041	-2.3	4,297,903	-1.4
Mainland Finland	14,372,364	-2.0	10,179,990	-2.2	4,192,374	-1.5
Uusimaa	4,492,878	0.2	2,404,036	-0.1	2,088,842	0.5
Espoo	323,191	-4.7	181,636	-4.6	141,555	-4.9
Helsinki	2,904,511	0.6	1,366,173	2.1	1,538,338	-0.7
Vantaa	756,163	3.4	447,268	-1.2	308,895	10.8
Varsinais-Suomi	891,870	-1.4	715,093	-4.3	176,777	12.3
Turku	635,018	1.1	504,261	-1.4	130,757	12.3
Satakunta	260,963	-6.2	217,074	-6.4	43,889	-5.2
Pori	157,057	-4.5	135,803	-5.5	21,254	2.9
Kanta-Häme	291,260	4.1	256,553	5.5	34,707	-5.2
Hämeenlinna	158,799	-4.2	137,490	-3.2	21,309	-10.3
Pirkanmaa	1,068,653	-3.7	899,916	-5.0	168,737	3.8
Tampere	831,902	0.8	680,545	-0.2	151,357	5.6
Päijät-Häme	439,074	-2.2	366,746	-5.1	72,328	16.0
Lahti	153,906	1.1	113,984	-1.6	39,922	9.7
Kymenlaakso	215,807	-10.7	150,884	0.7	64,923	-29.3
Kouvola	99,433	-2.8	77,083	-1.0	22,350	-8.6
South Karelia	513,731	-10.0	261,297	-3.4	252,434	-15.9
Lappeenranta	301,282	-5.2	188,925	1.1	112,357	-14.3
Etelä-Savo	427,063	-3.8	355,528	-2.0	71,535	-11.8
Mikkeli	152,339	-9.7	120,593	-6.3	31,746	-20.7
Pohjois-Savo	646,718	-2.9	570,234	-2.6	76,484	-4.7
Kuopio	417,924	-4.3	366,985	-4.4	50,939	-3.2
North Karelia	333,666	-4.0	261,413	-9.1	72,253	20.2
Joensuu	180,991	-3.4	134,947	-8.9	46,044	17.8
Central Finland	839,320	-3.5	710,791	-4.4	128,529	2.1
Jyväskylä	408,208	4.0	344,995	4.1	63,213	3.8
South Ostrobothnia	457,458	-2.9	438,160	-3.2	19,298	2.7
Seinäjoki	154,107	1.8	143,073	1.3	11,034	8.9
Ostrobothnia	299,507	0.2	235,191	-2.0	64,316	9.4
Vaasa	223,784	-0.1	172,001	-3.1	51,783	11.3
Central Ostrobothnia	110,899	0.8	100,138	-1.1	10,761	22.4
Kokkola	91,264	5.1	82,602	4.1	8,662	15.8
North Ostrobothnia	982,673	3.7	805,635	3.9	177,038	2.9
Kuusamo	220,962	3.0	163,356	-0.8	57,606	15.8
Oulu	498,813	2.7	406,127	3.1	92,686	0.9
Kainuu	652,374	-7.0	593,831	-5.8	58,543	-18.2
Kajaani	75,176	-5.9	67,550	-5.4	7,626	-9.5
Sotkamo	540,742	-6.6	497,805	-5.0	42,937	-22.1
Lapland	1,448,450	-3.1	837,470	-1.6	610,980	-5.0
Rovaniemi	336,014	-3.7	157,540	-3.5	178,474	-3.8
Åland	192,580	-2.1	87,051	-5.7	105,529	1.1
Maarianhamina	131,603	-7.3	67,668	-11.5	63,935	-2.4

Appendix table 5.1. Visitor arrivals and nights spend by country of residence, November 2014

Country of residence	Visitor arrivals in all accommodation establishments	Nights spend in all accommodation establishments	Change of nights spend in all accommodation establishments, %	Nights spend in hotels	Change of nights spend in hotels, %
Total	746,034	1,297,137	-3.8	1,162,082	-3.2
Finland	576,218	938,277	-2.9	840,932	-2.8
Foreign countries	169,816	358,860	-6.1	321,150	-4.4
Sweden	19,300	29,518	-6.2	28,616	-3.2
Germany	11,066	25,186	1.1	23,982	3.4
Russia	44,016	93,696	-27.1	74,713	-27.4
United Kingdom	11,350	22,166	-4.4	21,104	-3.8
United States	4,954	11,136	-2.0	10,659	-2.6
Norway	7,134	14,770	12.2	13,413	10.7
Netherlands	3,800	7,328	16.6	6,933	15.5
Italy	3,374	8,826	12.2	8,159	10.8
France	3,535	9,485	11.9	8,627	14.8
Japan	5,127	11,933	-11.7	11,137	-14.2
Estonia	5,902	14,832	-10.6	10,220	-7.4
Switzerland	2,169	5,584	5.0	5,206	4.8
Spain	2,101	5,595	21.4	5,057	21.7
China	3,482	6,671	-2.5	6,537	-2.7

Appendix table 5.2. Visitor arrivals and nights spend by country of residence, January-November 2014

Country of residence	Visitor arrivals in all accommodation establishments	Nights spend in all accommodation establishments	Change of nights spend in all accommodation establishments, %	Nights spend in hotels	Change of nights spend in hotels, %
Total	10,006,963	18,484,435	-2.2	14,564,944	-2.0
Finland	7,489,300	13,286,993	-2.2	10,267,041	-2.3
Foreign countries	2,517,663	5,197,442	-2.1	4,297,903	-1.4
Sweden	285,025	509,193	-0.0	388,967	4.0
Germany	236,804	469,613	-1.0	379,196	-0.9
Russia	582,808	1,263,597	-13.6	945,382	-16.7
United Kingdom	133,973	310,566	-4.7	274,138	-5.0
United States	88,602	193,636	8.7	186,798	8.8
Norway	88,467	171,335	2.4	134,874	4.8
Netherlands	67,349	148,517	0.7	116,927	0.3
Italy	52,817	109,201	4.0	95,469	4.7
France	72,787	187,912	-1.5	162,887	-1.0
Japan	92,683	174,118	-7.0	168,377	-7.0
Estonia	77,240	181,990	6.2	128,891	7.3
Switzerland	54,321	121,201	1.1	91,222	1.6
Spain	41,853	89,792	5.5	77,934	9.9
China	79,602	118,391	1.0	114,718	0.9

Appendix table 6. Nights spend in all establishments, 2014

Month	Nights spend, total	Change of nights spend, total, %	Nights spend, residents	Change of nights spend, residents, %	Nights spend, non-residents	Change of nights spend, non-residents, %
Total	18,484,435	-2.2	13,286,993	-2.2	5,197,442	-2.1
January	1,384,251	1.2	766,498	1.2	617,753	1.2
February	1,424,849	-1.6	1,021,948	-0.4	402,901	-4.5
March	1,623,446	-6.5	1,167,815	-8.0	455,631	-2.5
April	1,357,059	1.0	1,055,966	0.7	301,093	2.0
May	1,347,984	-0.6	950,736	1.1	397,248	-4.5
June	2,081,047	-3.4	1,523,496	-5.5	557,551	2.7
July	2,938,727	-3.6	2,223,530	-3.4	715,197	-4.0
August	2,144,457	-1.5	1,447,238	-2.3	697,219	0.2
September	1,507,027	-2.5	1,121,447	-0.7	385,580	-7.2
October	1,378,451	0.6	1,070,042	1.3	308,409	-1.9
November	1,297,137	-3.8	938,277	-2.9	358,860	-6.1

Suomen virallinen tilasto
Finlands officiella statistik
Official Statistics of Finland

Transport and Tourism 2015

Inquiries

Marjut Tuominen 029 551 3556

Kari Keränen 029 551 3208

Director in charge:

Hannele Orjala

liikenne.matkailu@stat.fi

www.stat.fi

Source: Accommodation Statistics. Statistics Finland