

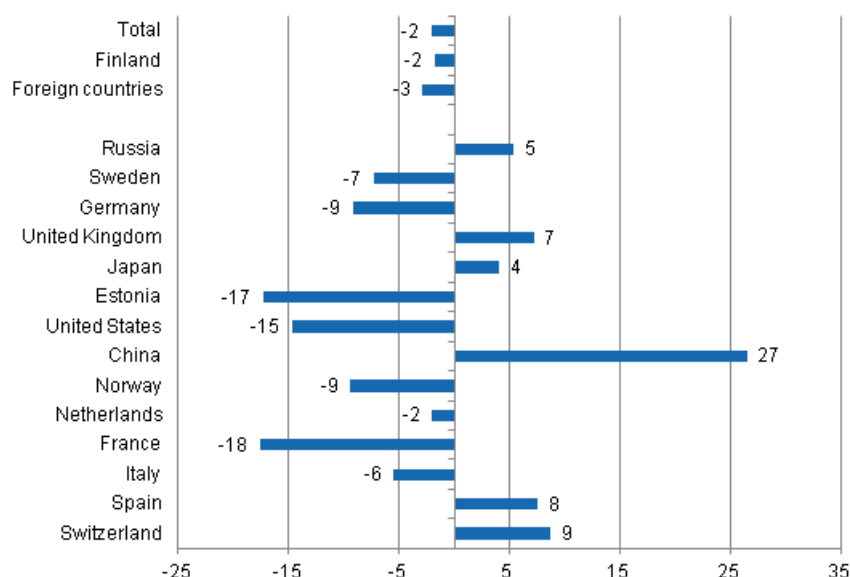
# Accommodation statistics

2013, October

## Nights spent by foreign tourists in Finland down by 2.9 per cent in October 2013

The number of recorded nights spent by foreign tourists at Finnish accommodation establishments in October 2013 was 316,000, which was 2.9 per cent lower than in October 2012. Overnight stays by resident tourists numbered good one million. However, the number was 1.8 per cent lower than one year earlier. The total number of overnight stays decreased by 2.1 per cent from last year, and altogether close on 1.4 million overnight stays were recorded at accommodation establishments in October 2013. These figures are preliminary data from Statistics Finland's statistics on accommodation establishments and they have been collected from accommodation establishments with at least 20 beds or caravan pitches with electricity connection, and youth hostels.

### Change in overnight stays in October 2013/2012, %

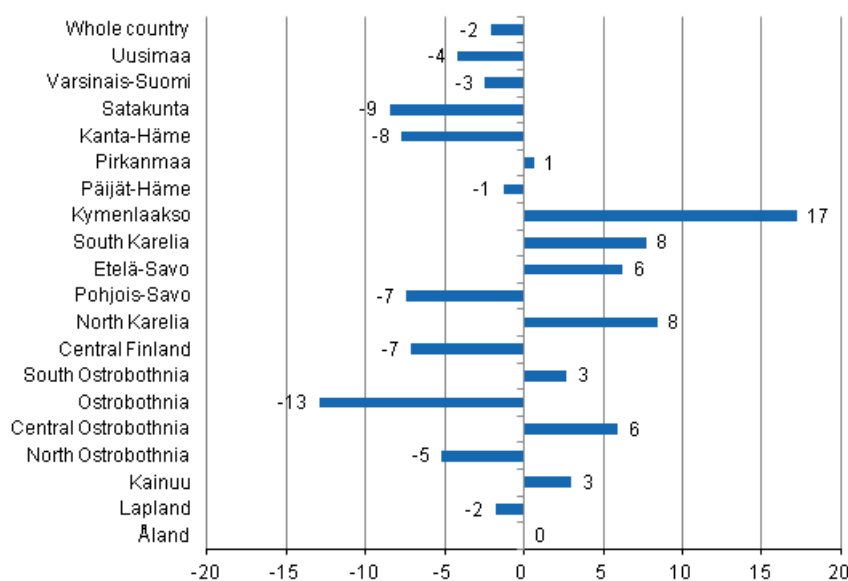


Nights spent at Finnish accommodation establishments by Russian visitors increased by 5.4 per cent in October 2013, and they were still the largest group of foreign visitors with nearly 76,000 overnight stays.

Swedish and German visitors made up the next biggest groups. Altogether, 31,000 overnight stays were recorded for Swedish visitors, which was, however, 7.3 per cent fewer than twelve months earlier. Overnight stays by German tourists decreased by 9.2 per cent, and 23,000 nights were recorded for them at accommodation establishments. Overnight stays by Estonian and French tourists decreased heavily from last year, and 17 to 18 per cent less stays were recorded for them compared with October 2012. Estonian visitors spent 13,500 nights and French visitors good 7,000. Overnight stays by visitors from the United States decreased by 14.7 per cent and numbered close on 12,000. By contrast, overnight stays by British visitors increased by 7.2 per cent from last year and totalled 19,000. Among the most important countries of inbound tourism into Finland, overnight stays of visitors from China increased most, or by 26.5 per cent, and good 10,000 overnight stays were recorded for them. Nearly, 14,000 overnight stays were recorded for Japanese visitors, which was 4.1 per cent more than one year before.

By region, the total number of overnight stays increased most in October in the regions of Kymenlaakso, up by 17.2 per cent, and North Karelia, up by 8.4 per cent. The regions of Central Ostrobothnia, Etelä-Savo and South Karelia all recorded six to eight per cent more overnight stays than in October 2012. By contrast, overnight stays decreased by 12.9 per cent in Ostrobothnia and by 8.5 per cent in Satakunta. The number of overnight stays in the whole country recorded at accommodation establishments in October fell by 2.1 per cent from one year earlier.

### Change in overnight stays in October by region 2013 / 2012, %



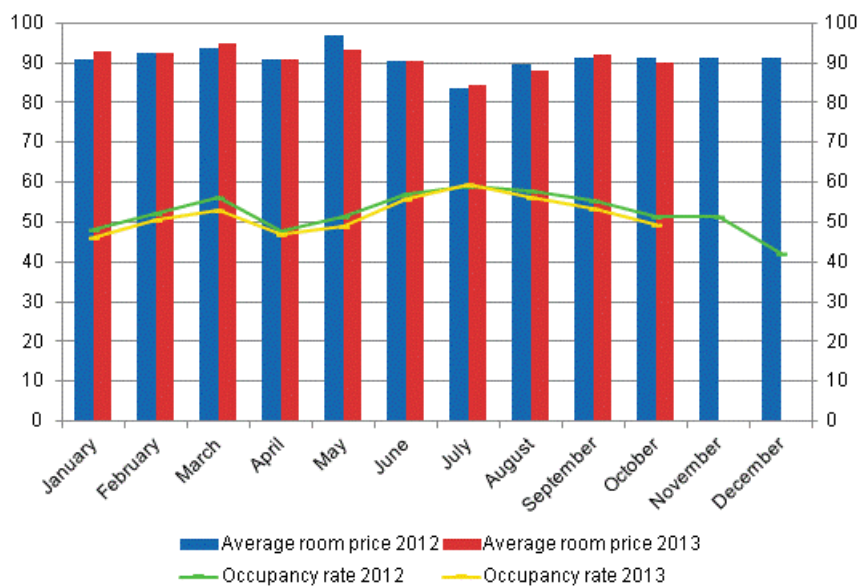
### Nights spent in hotels decreased by 2.8 per cent in October 2013

In October 2013, the total number of nights spent in hotels was 1.2 million, which was 2.8 per cent lower than twelve months earlier. Overnight stays recorded for resident tourists at accommodation establishments numbered 924,000, which was 2.2 per cent less than in October 2012. Overnight stays by foreign tourists decreased by 4.7 per cent and hotels recorded close on 280,000 of them.

The occupancy rate of hotel rooms was 49.4 per cent in October. One year earlier, it was 51.3 per cent. Among the regions, the highest occupancy rates of hotel rooms were measured in Uusimaa and South Karelia. Hotel room occupancy rate in both regions was 62.4 per cent. In Lappeenranta, the hotel room occupancy rate was 75.4 per cent and in Vantaa 71.8 per cent. Hotel room occupancy rate in Helsinki was 66.8 per cent.

In October 2013, the realised average price of a hotel room was EUR 89.93 per day for the whole country. Twelve months previously, it was EUR 91.28.

### Hotel room occupancy rate and the monthly average price

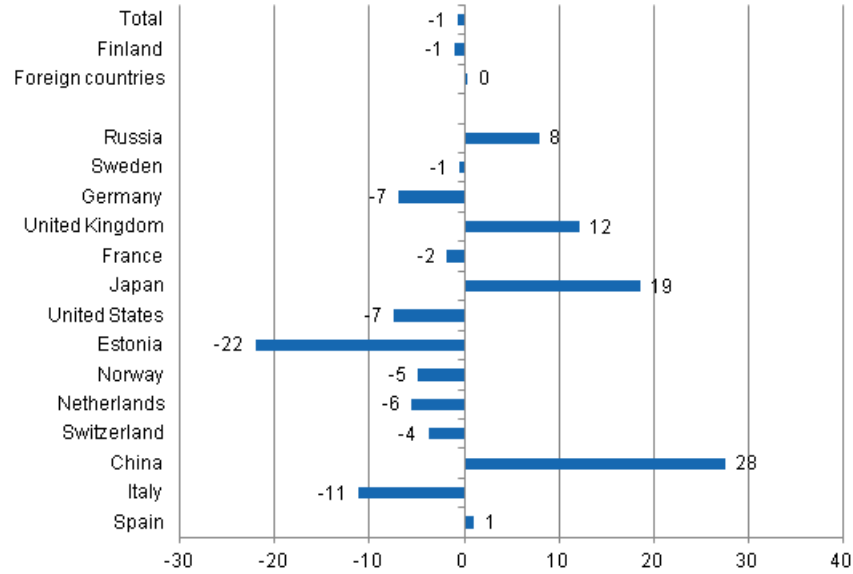


### Total number of nights spent at all accommodation establishments fell by 0.7 per cent in January to October 2013

Between January and October 2013, the number of nights spent at accommodation establishments in Finland totalled 17.5 million, which was 0.7 per cent down on the respective time period of last year. Overnight stays by resident tourists decreased by one per cent and accommodation establishments recorded a total of 12.6 million of them. Overnight stays by foreign tourists numbered 4.9 million, which was 0.3 per cent more than in January to October 2012.

Good 1.3 million nights spent at Finnish accommodation establishments were recorded for Russians, and they were by far the largest group of foreign visitors in January to October 2013. Overnight stays of Russian visitors increased by 7.9 per cent from the respective time period of last year. The second largest group was Swedish visitors. A total of 483,000 overnight stays were recorded for them, which was 0.5 per cent less than in January to October 2012. German visitors made up the third largest group with 450,000 overnight stays. Overnight stays by German visitors made a downturn in June and 6.9 per cent fewer overnight stays were recorded for them at accommodation establishments than in January to October 2012. By contrast, overnight stays by British tourists have increased heavily throughout the current year and in January to October, 12.2 per cent more stays were recorded for them than in the corresponding period in 2012. The number of overnight stays by British visitors rose to good 303,000. Among the most important countries of inbound tourism to Finland, overnight stays by visitors from China and Japan increased most. Overnight stays by Chinese tourists increased by 27.5 per cent and those by Japanese tourists by 18.6 per cent. By contrast, overnight stays by Estonian tourists continued to decrease heavily and 155,000 overnight stays were recorded for them at accommodation establishments in January to October 2013, which was 22.0 per cent less than in the corresponding time period last year.

**Change in overnight stays in January-October 2013/2012, %**



# Contents

## Tables

### Appendix tables

Appendix table 1.1. Capacity and its utilization, October 2013.....	6
Appendix table 1.2. Capacity and its utilization, January-October 2013.....	7
Appendix table 2.1. Nights spend in all establishments, October 2013.....	8
Appendix table 2.2. Nights spend in all establishments, January-October 2013.....	9
Appendix table 3.1. Hotel capacity and capacity utilization, October 2013.....	10
Appendix table 3.2. Hotel capacity and capacity utilization, January-October 2013.....	11
Appendix table 4.1. Nights spend in hotels, October 2013.....	12
Appendix table 4.2. Nights spend in hotels, January-October 2013.....	13
Appendix table 5.1. Visitor arrivals and nights spend by country of residence, October 2013.....	14
Appendix table 5.2. Visitor arrivals and nights spend by country of residence, January-October 2013.....	14
Appendix table 6. Nights spend in all establishments, 2013.....	15

## Appendix tables

**Appendix table 1.1. Capacity and its utilization, October 2013**

Region	Number of establishments	Number of bedrooms	Occupancy rate of bedrooms, %	Change of the occupancy rate compared to previous year, %-units	Average price of nights spend, in euros (incl. VAT 10 %)
Whole country	1,112	58,313	45.4	-1.9	55.73
Mainland Finland	1,072	57,185	45.9	-2.0	55.72
Uusimaa	142	14,509	61.5	-3.6	69.21
Varsinais-Suomi	67	3,756	44.5	-1.3	50.37
Satakunta	42	1,575	37.4	-4.7	54.17
Kanta-Häme	28	1,363	36.1	-2.2	46.82
Pirkanmaa	73	4,583	51.1	-2.3	53.72
Päijät-Häme	33	2,004	35.9	-4.0	45.43
Kymenlaakso	29	1,175	46.6	6.9	49.94
South Karelia	36	1,539	56.2	3.5	53.48
Etelä-Savo	77	2,200	35.1	-0.0	41.35
Pohjois-Savo	50	2,603	46.3	-4.9	50.20
North Karelia	51	1,531	45.1	4.8	48.78
Central Finland	47	3,005	45.6	-2.6	54.26
South Ostrobothnia	51	1,841	43.6	-1.2	41.27
Ostrobothnia	28	1,286	46.9	-6.6	60.87
Central Ostrobothnia	14	542	50.2	7.7	59.11
North Ostrobothnia	98	4,306	40.7	-0.9	46.42
Kainuu	45	2,243	39.7	-3.5	36.72
Lapland	161	7,124	22.0	-0.8	43.73
Åland	40	1,128	23.3	3.7	..

**Appendix table 1.2. Capacity and its utilization, January-October 2013**

Region	Number of establishments	Number of bedrooms	Occupancy rate of bedrooms, %	Change of the occupancy rate compared to previous year, %-units	Average price of nights spend, in euros (incl. VAT 10 %)
Whole country	1,206	61,342	48.5	-1.6	49.10
Mainland Finland	1,156	60,067	48.7	-1.6	49.16
Uusimaa	145	14,683	62.3	-2.4	64.39
Varsinais-Suomi	73	3,882	48.6	0.0	46.06
Satakunta	42	1,607	41.5	-0.9	47.95
Kanta-Häme	30	1,456	36.5	-4.0	45.18
Pirkanmaa	75	4,630	48.4	-3.4	49.70
Päijät-Häme	35	2,034	40.8	-4.2	43.35
Kymenlaakso	29	1,182	44.1	1.0	43.58
South Karelia	40	1,889	53.3	-1.8	44.48
Etelä-Savo	83	2,537	41.4	1.4	34.89
Pohjois-Savo	52	2,691	48.3	-2.5	45.58
North Karelia	58	1,700	42.9	2.3	42.16
Central Finland	54	3,201	46.4	-2.7	43.80
South Ostrobothnia	54	1,929	43.1	-0.7	37.50
Ostrobothnia	33	1,379	46.7	-1.5	43.77
Central Ostrobothnia	17	593	42.7	1.3	46.39
North Ostrobothnia	104	4,536	43.2	-1.2	38.94
Kainuu	49	2,282	44.0	-2.8	37.09
Lapland	182	7,859	40.0	-0.3	42.79
Åland	50	1,275	37.7	0.8	..

**Appendix table 2.1. Nights spend in all establishments, October 2013**

Region	Nights spend, total	Change of nights spend, total, %	Nights spend, residents	Change of nights spend, residents, %	Nights spend, non-residents	Change of nights spend, non-residents, %
Whole country	1,367,479	-2.1	1,051,952	-1.8	315,527	-2.9
Mainland Finland	1,353,099	-2.1	1,044,837	-1.9	308,262	-2.7
Uusimaa	409,044	-4.2	244,375	-3.2	164,669	-5.7
Varsinais-Suomi	85,624	-2.5	73,253	-0.5	12,371	-12.9
Satakunta	27,204	-8.5	23,103	-6.4	4,101	-18.9
Kanta-Häme	27,687	-7.7	24,846	-6.3	2,841	-18.4
Pirkanmaa	122,337	0.6	105,857	1.8	16,480	-6.4
Päijät-Häme	43,465	-1.3	38,827	0.1	4,638	-11.4
Kymenlaakso	26,777	17.2	15,981	2.4	10,796	49.3
South Karelia	54,627	7.7	32,168	1.6	22,459	17.7
Etelä-Savo	43,490	6.2	34,344	0.3	9,146	36.5
Pohjois-Savo	64,180	-7.4	58,432	-7.7	5,748	-4.8
North Karelia	36,587	8.4	30,563	5.8	6,024	24.0
Central Finland	70,981	-7.1	65,057	-7.3	5,924	-4.4
South Ostrobothnia	49,193	2.7	47,316	3.0	1,877	-4.6
Ostrobothnia	25,970	-12.9	20,496	-18.3	5,474	15.6
Central Ostrobothnia	11,971	5.9	11,076	9.0	895	-21.8
North Ostrobothnia	97,222	-5.2	87,753	0.5	9,469	-37.8
Kainuu	77,594	3.0	73,079	2.8	4,515	6.3
Lapland	79,146	-1.8	58,311	-5.1	20,835	9.0
Åland	14,380	-0.0	7,115	12.7	7,265	-10.0



**Appendix table 2.2. Nights spend in all establishments, January-October 2013**

Region	Nights spend, total	Change of nights spend, total, %	Nights spend, residents	Change of nights spend, residents, %	Nights spend, non-residents	Change of nights spend, non-residents, %
Whole country	17,547,577	-0.7	12,609,095	-1.0	4,938,482	0.3
Mainland Finland	17,140,424	-0.8	12,448,641	-1.1	4,691,783	0.2
Uusimaa	4,367,412	-3.8	2,354,892	-4.0	2,012,520	-3.5
Varsinais-Suomi	1,047,745	-3.6	859,571	-3.3	188,174	-4.9
Satakunta	380,780	1.0	329,197	2.4	51,583	-7.0
Kanta-Häme	319,517	-8.5	282,535	-6.6	36,982	-21.0
Pirkanmaa	1,287,319	-3.1	1,085,865	-4.0	201,454	2.6
Päijät-Häme	519,661	-4.3	443,240	-2.1	76,421	-15.7
Kymenlaakso	322,785	8.5	208,743	-1.4	114,042	33.0
South Karelia	650,340	5.4	319,853	-3.8	330,487	16.3
Etelä-Savo	730,617	15.8	539,684	11.7	190,933	28.9
Pohjois-Savo	759,309	-2.6	649,136	-2.5	110,173	-3.4
North Karelia	454,994	4.8	373,177	6.5	81,817	-2.5
Central Finland	969,694	-3.9	835,615	-2.1	134,079	-13.9
South Ostrobothnia	624,580	3.1	591,599	2.0	32,981	27.4
Ostrobothnia	377,395	-0.9	313,654	0.5	63,741	-7.2
Central Ostrobothnia	143,546	1.0	129,252	0.1	14,294	9.4
North Ostrobothnia	1,384,096	2.1	1,158,809	1.5	225,287	5.5
Kainuu	840,726	1.4	754,320	2.6	86,406	-8.2
Lapland	1,959,908	-0.4	1,219,499	-2.0	740,409	2.4
Åland	407,153	4.1	160,454	5.4	246,699	3.3

**Appendix table 3.1. Hotel capacity and capacity utilization, October 2013**

Region / municipality	Number of establishments	Number of bedrooms	Occupancy rate of bedrooms, %	Change compared to previous year, %-units	Room price, euros (incl. VAT 10 %)	<sup>1)</sup> RevPAR, euros (incl. VAT 10 %)
Whole country	619	50,180	49.4	-1.9	89.93	44.42
Mainland Finland	606	49,455	49.7	-1.9	89.90	44.69
Uusimaa	113	14,066	62.4	-3.6	101.41	63.23
Espoo	11	1,188	56.7	2.2	85.27	48.35
Helsinki	53	8,308	66.8	-5.5	106.91	71.45
Vantaa	11	2,197	71.8	-0.1	101.10	72.54
Varsinais-Suomi	37	3,157	48.0	-3.0	81.05	38.94
Turku	18	2,062	51.7	-3.6	82.33	42.57
Satakunta	25	1,250	43.2	-4.7	81.09	35.03
Pori	9	706	44.9	-4.0	79.73	35.82
Kanta-Häme	17	1,196	38.8	-2.3	86.20	33.43
Hämeenlinna	8	729	37.6	-6.8	94.37	35.46
Pirkanmaa	43	3,933	54.2	-1.3	90.12	48.87
Tampere	24	2,828	58.5	-2.5	92.62	54.15
Päijät-Häme	16	1,825	37.5	-3.9	78.53	29.47
Lahti	6	700	40.8	-8.3	84.48	34.50
Kymenlaakso	18	980	50.7	6.6	79.13	40.14
Kouvola	7	443	42.7	-3.9	79.12	33.79
South Karelia	17	1,196	62.4	5.2	96.24	60.08
Lappeenranta	7	580	75.4	4.2	88.94	67.02
Etelä-Savo	28	1,575	40.2	-0.1	73.49	29.56
Mikkeli	8	556	50.4	3.8	78.10	39.34
Pohjois-Savo	29	2,334	48.4	-5.1	85.53	41.36
Kuopio	15	1,408	52.2	-2.8	89.66	46.79
North Karelia	22	1,201	51.4	4.9	84.59	43.48
Joensuu	7	610	64.6	8.9	82.43	53.22
Central Finland	27	2,668	48.4	-3.1	89.57	43.31
Jyväskylä	10	1,376	57.6	0.3	97.24	56.03
South Ostrobothnia	28	1,505	51.4	0.3	72.58	37.28
Seinäjoki	8	572	56.9	4.3	79.76	45.35
Ostrobothnia	21	1,214	49.3	-5.9	84.65	41.70
Vaasa	8	804	53.9	-6.0	87.17	46.96
Central Ostrobothnia	10	496	51.8	7.8	76.31	39.52
Kokkola	5	358	59.9	8.9	78.57	47.10
North Ostrobothnia	50	3,459	45.3	0.4	81.22	36.78
Kuusamo	11	761	23.8	2.0	75.86	18.08
Oulu	12	1,584	59.9	-3.3	86.00	51.48
Kainuu	21	1,756	47.3	-2.9	76.85	36.33
Kajaani	6	409	35.6	-6.3	81.60	29.07
Sotkamo	7	1,090	58.6	-4.3	75.19	44.04
Lapland	84	5,644	24.6	-0.6	74.42	18.34
Rovaniemi	11	1,170	40.4	2.9	65.66	26.55
Åland	13	725	28.6	3.3	..	..
Maarianhamina	6	447	43.2	10.1	..	..

1) RevPar = Average accommodation sales revenue per available room. Calculation formula: RevPar = Average room price \* Occupancy rate.

**Appendix table 3.2. Hotel capacity and capacity utilization, January-October 2013**

Region / municipality	Number of establishments	Number of bedrooms	Occupancy rate of bedrooms, %	Change compared to previous year, %-units	Room price, euros (incl. VAT 10 %)	<sup>1)</sup> RevPAR, euros (incl. VAT 10 %)
Whole country	639	51,262	52.0	-1.7	90.68	47.19
Mainland Finland	625	50,511	52.2	-1.8	90.63	47.28
Uusimaa	115	14,204	63.1	-2.3	99.60	62.83
Espoo	12	1,211	57.1	-1.4	80.86	46.18
Helsinki	53	8,398	68.6	-2.5	105.53	72.42
Vantaa	11	2,162	67.9	-1.3	97.74	66.37
Varsinais-Suomi	38	3,167	52.9	-0.5	83.32	44.06
Turku	18	2,064	56.6	-0.1	84.63	47.93
Satakunta	25	1,255	45.6	-1.1	85.68	39.03
Pori	9	692	48.5	-0.7	84.75	41.11
Kanta-Häme	17	1,236	38.9	-4.3	86.39	33.57
Hämeenlinna	8	735	39.1	-6.8	92.37	36.10
Pirkanmaa	43	3,884	50.3	-3.8	92.18	46.38
Tampere	24	2,781	55.0	-4.9	95.32	52.43
Päijät-Häme	17	1,809	42.4	-4.4	79.83	33.85
Lahti	7	682	45.7	-4.6	84.96	38.84
Kymenlaakso	17	962	46.9	1.2	81.83	38.38
Kouvola	7	437	43.9	-5.1	80.72	35.40
South Karelia	19	1,418	57.9	-2.7	95.00	55.03
Lappeenranta	7	729	64.8	-4.4	89.53	58.04
Etelä-Savo	31	1,781	45.0	1.1	79.98	35.98
Mikkeli	9	592	51.5	1.7	82.74	42.64
Pohjois-Savo	28	2,312	50.7	-2.2	86.66	43.94
Kuopio	14	1,394	56.3	-1.3	91.09	51.27
North Karelia	23	1,282	48.2	3.5	83.22	40.14
Joensuu	8	685	55.3	4.7	82.30	45.51
Central Finland	29	2,739	49.8	-3.4	91.47	45.59
Jyväskylä	11	1,432	52.8	-5.2	94.22	49.74
South Ostrobothnia	28	1,524	49.4	-0.3	75.17	37.16
Seinäjoki	8	582	53.1	1.5	81.10	43.04
Ostrobothnia	21	1,208	50.1	-1.5	84.97	42.60
Vaasa	8	804	55.0	-1.9	88.02	48.41
Central Ostrobothnia	10	508	44.9	0.9	76.64	34.40
Kokkola	5	367	51.3	0.7	78.65	40.32
North Ostrobothnia	49	3,477	46.6	-1.4	83.62	38.97
Kuusamo	10	747	35.5	-3.0	91.51	32.48
Oulu	12	1,584	57.3	-3.3	84.81	48.60
Kainuu	22	1,761	49.9	-2.5	78.99	39.40
Kajaani	6	410	39.9	-2.9	79.71	31.77
Sotkamo	7	1,083	58.8	-3.2	80.38	47.28
Lapland	92	5,986	43.5	-0.2	86.07	37.42
Rovaniemi	11	1,188	52.5	1.2	80.29	42.16
Åland	14	752	43.7	1.6	..	..
Maarianhamina	7	470	54.5	4.3	..	..

1) RevPar = Average accommodation sales revenue per available room. Calculation formula: RevPar = Average room price \* Occupancy rate.

**Appendix table 4.1. Nights spend in hotels, October 2013**

Region / municipality	Nights spend, total	Change of nights spend, total, %	Nights spend, residents	Change of nights spend, residents, %	Nights spend, non-residents	Change of nights spend, non-residents, %
Whole country	1,204,071	-2.8	924,186	-2.2	279,885	-4.7
Mainland Finland	1,194,074	-2.9	918,940	-2.3	275,134	-4.9
Uusimaa	389,529	-5.2	234,655	-2.9	154,874	-8.5
Espoo	28,681	8.9	16,699	1.0	11,982	22.1
Helsinki	242,472	-7.8	131,904	0.0	110,568	-15.6
Vantaa	73,939	3.3	49,081	-3.9	24,858	21.5
Varsinais-Suomi	75,294	-4.1	64,913	-2.0	10,381	-15.8
Turku	51,765	-6.3	43,612	-4.8	8,153	-13.4
Satakunta	23,406	-11.0	19,928	-9.0	3,478	-20.8
Pori	13,648	-12.5	11,919	-10.8	1,729	-22.7
Kanta-Häme	24,275	-9.2	21,434	-7.9	2,841	-18.3
Hämeenlinna	14,344	-14.3	12,559	-11.8	1,785	-28.9
Pirkanmaa	106,764	-0.3	92,511	1.2	14,253	-9.0
Tampere	77,354	-2.8	64,276	-1.3	13,078	-9.4
Päijät-Häme	37,669	-3.3	33,737	-1.7	3,932	-15.3
Lahti	12,586	-2.6	9,852	-1.6	2,734	-6.2
Kymenlaakso	22,907	21.7	13,113	6.8	9,794	49.6
Kouvola	8,421	-6.0	6,553	0.6	1,868	-23.6
South Karelia	47,393	5.5	28,100	3.3	19,293	8.8
Lappeenranta	28,980	3.8	19,017	-4.2	9,963	23.4
Etelä-Savo	31,325	-0.4	27,458	-1.1	3,867	4.4
Mikkeli	13,363	8.6	11,417	10.5	1,946	-1.3
Pohjois-Savo	57,500	-7.5	53,141	-7.8	4,359	-3.1
Kuopio	36,267	-2.3	33,819	-2.2	2,448	-2.8
North Karelia	30,280	4.5	25,675	4.1	4,605	7.0
Joensuu	17,316	0.9	13,696	-0.1	3,620	4.7
Central Finland	64,757	-7.7	59,158	-8.0	5,599	-5.1
Jyväskylä	36,315	2.0	32,445	3.4	3,870	-8.5
South Ostrobothnia	41,303	-0.6	39,630	0.0	1,673	-13.3
Seinäjoki	13,511	-3.6	12,385	-6.4	1,126	42.0
Ostrobothnia	24,410	-15.3	19,216	-20.2	5,194	9.7
Vaasa	17,734	-12.8	13,322	-18.7	4,412	12.0
Central Ostrobothnia	10,247	4.7	9,550	9.5	697	-34.4
Kokkola	8,029	2.7	7,412	6.6	617	-29.1
North Ostrobothnia	77,417	1.9	68,889	3.2	8,528	-7.0
Kuusamo	12,694	26.6	12,167	29.7	527	-17.5
Oulu	44,490	-4.3	37,623	-3.9	6,867	-6.0
Kainuu	67,066	5.6	62,945	5.5	4,121	6.3
Kajaani	6,167	-10.3	5,499	-8.1	668	-24.8
Sotkamo	59,132	9.1	55,768	8.7	3,364	15.0
Lapland	62,532	-4.6	44,887	-9.0	17,645	8.9
Rovaniemi	21,274	-6.0	13,681	-9.4	7,593	1.0
Åland	9,997	17.3	5,246	22.2	4,751	12.3
Maarianhamina	9,133	23.5	4,964	23.2	4,169	23.8

**Appendix table 4.2. Nights spend in hotels, January-October 2013**

Region / municipality	Nights spend, total	Change of nights spend, total, %	Nights spend, residents	Change of nights spend, residents, %	Nights spend, non-residents	Change of nights spend, non-residents, %
Whole country	13,665,118	-2.0	9,641,109	-2.1	4,024,009	-2.0
Mainland Finland	13,475,154	-2.1	9,551,889	-2.2	3,923,265	-2.1
Uusimaa	4,090,130	-3.9	2,171,307	-4.1	1,918,823	-3.6
Espoo	309,701	-4.5	172,997	-6.1	136,704	-2.3
Helsinki	2,629,889	-4.2	1,195,568	-2.6	1,434,321	-5.4
Vantaa	666,465	-2.6	411,750	-6.8	254,715	5.1
Varsinais-Suomi	834,840	-3.2	689,668	-2.1	145,172	-8.2
Turku	580,081	-3.6	472,790	-2.3	107,291	-8.5
Satakunta	256,605	0.5	214,131	2.9	42,474	-9.8
Pori	151,620	2.4	132,553	4.3	19,067	-9.0
Kanta-Häme	254,700	-8.8	220,992	-6.0	33,708	-23.9
Hämeenlinna	150,295	-12.1	128,720	-7.0	21,575	-33.5
Pirkanmaa	1,010,154	-3.4	861,450	-3.1	148,704	-5.0
Tampere	745,816	-4.1	614,812	-4.2	131,004	-3.8
Päijät-Häme	411,774	-7.4	354,162	-3.8	57,612	-24.8
Lahti	138,428	-12.5	105,459	-8.2	32,969	-24.0
Kymenlaakso	215,960	4.7	133,765	-4.6	82,195	24.6
Kouvola	90,816	-7.5	69,003	-11.4	21,813	7.7
South Karelia	520,780	3.2	251,153	-5.6	269,627	13.0
Lappeenranta	289,206	2.5	172,719	-7.7	116,487	22.5
Etelä-Savo	412,524	3.1	337,192	2.8	75,332	4.4
Mikkeli	156,384	6.8	119,208	5.2	37,176	12.0
Pohjois-Savo	613,996	-2.7	537,869	-2.2	76,127	-6.5
Kuopio	403,950	0.4	353,724	1.7	50,226	-8.0
North Karelia	321,632	0.6	266,451	2.5	55,181	-7.3
Joensuu	170,934	-2.1	135,488	0.0	35,446	-9.6
Central Finland	810,366	-4.7	690,108	-2.9	120,258	-13.8
Jyväskylä	357,798	-3.9	300,992	0.9	56,806	-23.4
South Ostrobothnia	433,456	3.0	416,120	3.5	17,336	-8.2
Seinäjoki	136,335	-4.4	127,048	-4.7	9,287	-0.4
Ostrobothnia	275,553	-5.0	222,221	-2.6	53,332	-14.2
Vaasa	206,880	-4.4	164,713	-2.4	42,167	-11.7
Central Ostrobothnia	99,853	-0.2	91,723	1.4	8,130	-15.4
Kokkola	78,695	-1.6	71,846	0.4	6,849	-18.9
North Ostrobothnia	866,652	1.8	713,223	1.0	153,429	6.2
Kuusamo	194,208	1.4	155,861	1.0	38,347	3.0
Oulu	442,751	0.4	357,362	-0.2	85,389	2.9
Kainuu	650,681	3.0	583,745	4.5	66,936	-7.9
Kajaani	74,264	-2.4	66,330	-0.8	7,934	-14.0
Sotkamo	535,735	5.1	484,619	6.2	51,116	-4.4
Lapland	1,395,498	-1.9	796,609	-6.6	598,889	5.0
Rovaniemi	319,213	-3.0	144,977	-7.1	174,236	0.8
Åland	189,964	6.1	89,220	10.4	100,744	2.6
Maarianhamina	136,856	4.4	73,828	11.2	63,028	-2.6

**Appendix table 5.1. Visitor arrivals and nights spend by country of residence, October 2013**

Country of residence	Visitor arrivals in all accommodation establishments	Nights spend in all accommodation establishments	Change of nights spend in all accommodation establishments, %	Nights spend in hotels	Change of nights spend in hotels, %
Total	767,684	1,367,479	-2.1	1,204,071	-2.8
Finland	602,497	1,051,952	-1.8	924,186	-2.2
Foreign countries	165,187	315,527	-2.9	279,885	-4.7
Sweden	19,515	31,214	-7.3	28,444	-8.0
Germany	10,984	23,048	-9.2	21,328	-10.7
Russia	46,154	75,746	5.4	60,668	-0.8
United Kingdom	8,446	19,039	7.2	18,412	5.2
United States	5,622	11,585	-14.7	11,193	-14.5
Norway	5,546	9,839	-9.4	9,431	-7.8
Netherlands	3,771	7,362	-2.0	7,008	-3.6
Italy	2,850	6,369	-5.5	5,647	-10.0
France	3,389	7,113	-17.6	6,326	-15.9
Japan	7,578	13,979	4.1	13,492	4.8
Estonia	5,744	13,560	-17.3	10,261	-20.2
Switzerland	2,043	4,576	8.7	4,334	15.1
Spain	2,055	4,861	7.5	4,386	6.7
China	5,601	10,289	26.5	9,973	27.4

**Appendix table 5.2. Visitor arrivals and nights spend by country of residence, January-October 2013**

Country of residence	Visitor arrivals in all accommodation establishments	Nights spend in all accommodation establishments	Change of nights spend in all accommodation establishments, %	Nights spend in hotels	Change of nights spend in hotels, %
Total	9,382,073	17,547,577	-0.7	13,665,118	-2.0
Finland	7,006,442	12,609,095	-1.0	9,641,109	-2.1
Foreign countries	2,375,631	4,938,482	0.3	4,024,009	-2.0
Sweden	260,043	483,497	-0.5	344,369	-3.1
Germany	224,274	450,143	-6.9	359,511	-8.8
Russia	639,220	1,332,983	7.9	1,031,693	2.0
United Kingdom	121,014	303,437	12.2	266,757	9.6
United States	80,147	166,872	-7.4	160,703	-8.0
Norway	80,313	154,058	-4.9	116,636	-5.7
Netherlands	61,789	141,286	-5.6	110,588	-4.8
Italy	46,978	97,111	-11.1	83,846	-12.1
France	68,630	182,350	-1.8	156,959	-2.2
Japan	90,862	173,596	18.6	168,031	18.5
Estonia	68,670	155,327	-22.0	109,132	-22.5
Switzerland	51,354	114,173	-3.8	84,813	-6.1
Spain	35,453	80,540	1.0	66,798	-2.9
China	70,733	110,338	27.5	107,023	28.3

**Appendix table 6. Nights spend in all establishments, 2013**

Month	Nights spend, total	Change of nights spend, total, %	Nights spend, residents	Change of nights spend, residents, %	Nights spend, non-residents	Change of nights spend, non-residents, %
Total	17,547,577	-0.7	12,609,095	-1.0	4,938,482	0.3
January	1,361,702	-2.9	753,274	-4.2	608,428	-1.3
February	1,442,688	-1.1	1,021,104	-0.8	421,584	-2.0
March	1,737,559	-0.1	1,269,654	-1.5	467,905	3.9
April	1,344,842	-3.6	1,049,863	-2.5	294,979	-7.4
May	1,355,662	1.1	940,448	-1.3	415,214	7.0
June	2,157,022	1.2	1,613,060	2.4	543,962	-1.9
July	3,050,539	0.8	2,299,426	0.3	751,113	2.5
August	2,180,599	-1.6	1,481,392	-2.1	699,207	-0.6
September	1,549,485	-0.4	1,128,922	-2.1	420,563	4.5
October	1,367,479	-2.1	1,051,952	-1.8	315,527	-2.9

### Inquiries

Marjut Tuominen 09 1734 3556

Merja Rönkä 09 1734 3209

Director in charge:

Hannele Orjala

[liikenne.matkailu@stat.fi](mailto:liikenne.matkailu@stat.fi)

[www.stat.fi](http://www.stat.fi)

Source: Accommodation Statistics. Statistics Finland