

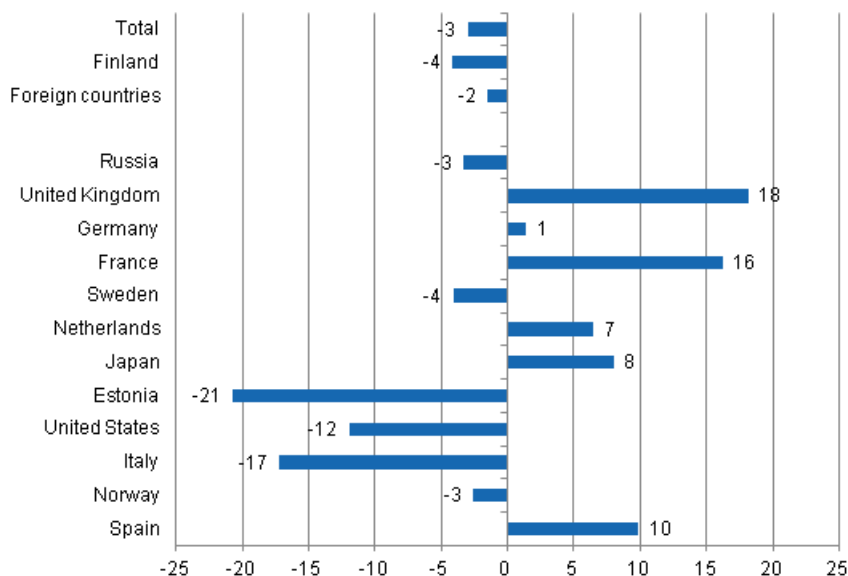
Accommodation statistics

2013, January

Overnight stays at accommodation establishments decreased by 3 per cent in January 2013

A total of nearly 1.4 million overnight stays were recorded at Finnish accommodation establishments in January 2013, which is 3.0 per cent less than in January 2012. The number of nights spent by resident tourists went down by 4.2 per cent and totalled nearly 754,000. Overnight stays by foreign tourists decreased by 1.5 per cent and they spent good 607,000 nights at Finnish accommodation establishments in January 2013. These figures are preliminary data from Statistics Finland's statistics on accommodation establishments and they have been collected from accommodation establishments with at least 20 beds or caravan pitches with electricity connection, and youth hostels.

Change in overnight stays in January 2013/2012, %

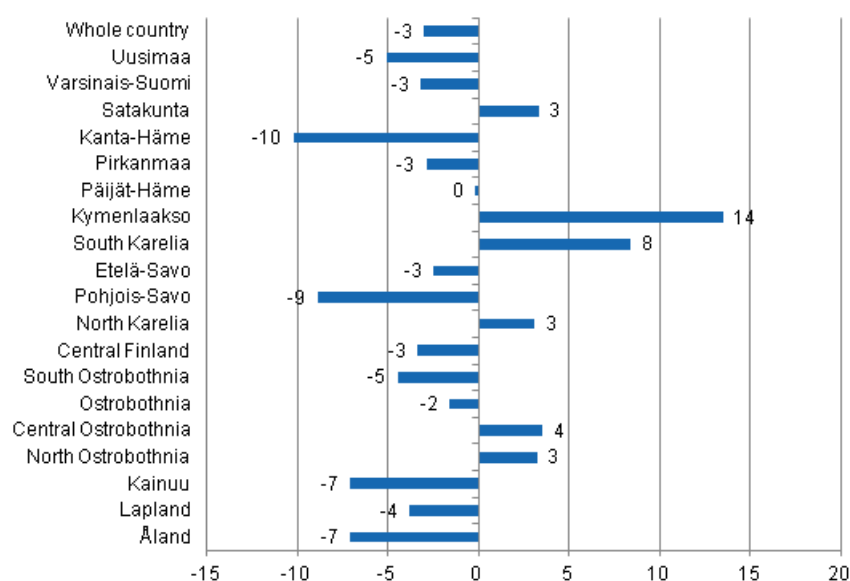


The prolonged growth in the number of nights spent by Russian tourists at accommodation establishments halted in January 2013. Russians were, however, by far the largest group of foreign tourists with 311,000 overnight stays, even though the amount decreased by 3.3 per cent from January 2012. British and German

visitors came next. For British tourists, 46,000 overnight stays were recorded and 32,000 for German tourists. Overnight stays by British tourists increased by 18.2 per cent and those by German tourists by 1.4 per cent. Overnight stays by French tourists also increased heavily by 16.3 per cent and they spent nearly 30,000 nights at Finnish accommodation establishments. Overnight stays by Spanish tourists increased by 9.9 per cent and those by Japanese tourists by 8.0 per cent. The biggest decrease was seen in overnight stays by Estonian tourists, down by 20.7 per cent, and Italian tourists, by 17.2 per cent. Overnight stays by visitors from the United States also fell by 11.9 per cent.

By region, the total number of overnight stays increased most in January 2013 in Kymenlaakso, up by 13.5 per cent. The number of overnight stays grew by 8.4 per cent in South Karelia and by 3.5 per cent in Central Ostrobothnia. In Satakunta, North Karelia and North Ostrobothnia, overnight stays increased by three per cent. Overnight stays decreased most in Kanta-Häme, by 10.2 per cent, and in Pohjois-Savo, by 8.9 per cent. Overnight stays in the whole country decreased by 3 per cent from last year.

Change in overnight stays in January by region 2013 / 2012, %



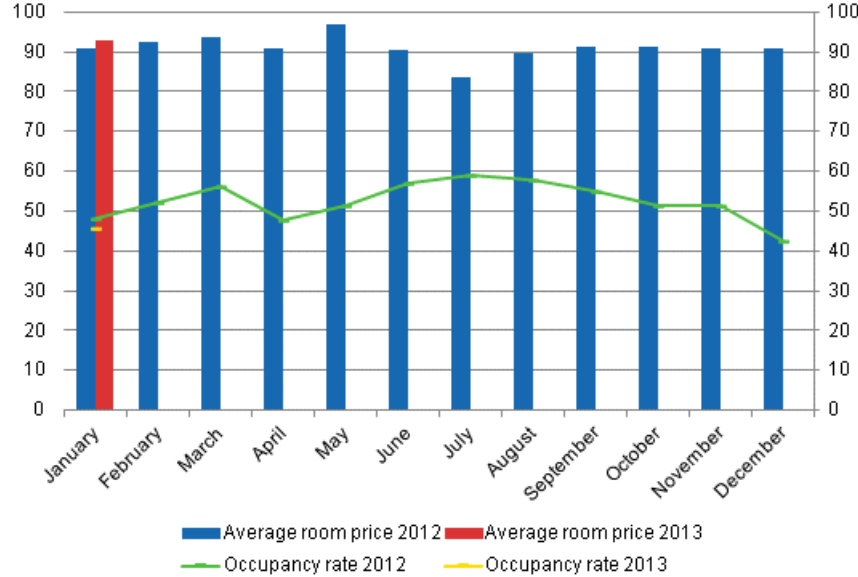
Nights spent in hotels decreased by 3.2 per cent in January 2013

In January 2013, the total number of nights spent in hotels was just under 1.2 million, which was 3.2 per cent lower than twelve months earlier. Overnight stays by foreign tourists decreased by 3.5 per cent and hotels recorded a total of 520,000 of them. Recorded nights spent by resident tourists in hotels numbered 668,000. The number was 3.0 per cent lower than in January 2012.

The occupancy rate of hotel rooms was 45.6 per cent in January. One year earlier, it was 48.2 per cent. Among the regions, the highest occupancy rates of hotel rooms were measured in Uusimaa, 54.9 per cent, and South Karelia, 54.7 per cent. In Vantaa, the hotel room occupancy rate was 67.4 per cent and in Lappeenranta 62.9 per cent. Hotel room occupancy rate in Helsinki was 57.8 per cent.

In January 2013, the realised average price of a hotel room was EUR 92.71 per day for the whole country. Twelve months previously it was EUR 90.64.

Hotel room occupancy rate and the monthly average price



Contents

Tables

Appendix tables

Appendix table 1. Capacity and its utilization, January 2013.....5

Appendix table 2. Nights spend in all establishments, January 2013.....6

Appendix table 3. Hotel capacity and capacity utilization, January 2013.....7

Appendix table 4. Nights spend in hotels, January 2013.....8

Appendix table 5a. Visitor arrivals and nights spend by country of residence, January 2013.....9

Appendix tables

Appendix table 1. Capacity and its utilization, January 2013

Region	Number of establishments	Number of bedrooms	Occupancy rate of bedrooms %	Change of the occupancy rate compared to previous year, %-units	Average price of nights spend, in euros (incl. VAT 10 %)
Whole country	1 060	58 199	42,6	-2,6	53,67
Mainland Finland	1 037	57 467	42,9	-2,7	53,67
Uusimaa	141	14 678	54,3	-3,5	66,16
Varsinais-Suomi	59	3 672	35,3	-1,2	51,24
Satakunta	36	1 484	30,3	-2,2	63,03
Kanta-Häme	30	1 436	29,5	-6,3	49,87
Pirkanmaa	67	4 302	37,8	-5,0	54,81
Päijät-Häme	32	1 908	40,4	0,0	46,74
Kymenlaakso	25	1 158	32,9	-2,8	47,27
South Karelia	38	1 744	50,0	-0,0	49,54
Etelä-Savo	70	2 107	32,9	0,0	40,29
Pohjois-Savo	47	2 545	42,0	-5,2	47,10
North Karelia	52	1 575	36,3	2,0	44,88
Central Finland	46	2 996	42,6	-2,5	45,38
South Ostrobothnia	47	1 670	34,4	-1,8	44,33
Ostrobothnia	29	1 273	38,0	-1,2	62,22
Central Ostrobothnia	14	546	32,4	-0,1	55,84
North Ostrobothnia	94	4 260	36,5	-2,5	41,45
Kainuu	41	2 152	38,6	-3,6	42,05
Lapland	169	7 961	45,9	-2,4	50,69
Åland	23	732	13,7	-0,0	..

Appendix table 2. Nights spend in all establishments, January 2013

Region	Nights spend, total	Change of nights spend, total, %	Nights spend, residents	Change of nights spend, residents, %	Nights spend, non-residents	Change of nights spend, non-residents, %
Whole country	1 361 168	-3,0	753 715	-4,2	607 453	-1,5
Mainland Finland	1 356 060	-3,0	750 956	-4,2	605 104	-1,4
Uusimaa	364 108	-5,1	186 554	-1,8	177 554	-8,4
Varsinais-Suomi	61 236	-3,2	48 743	-4,5	12 493	2,1
Satakunta	18 423	3,3	14 102	3,9	4 321	1,7
Kanta-Häme	23 016	-10,2	17 210	-9,3	5 806	-12,8
Pirkanmaa	85 804	-2,9	68 282	-4,5	17 522	4,4
Päijät-Häme	46 301	-0,2	35 482	5,6	10 819	-15,5
Kymenlaakso	21 770	13,5	11 261	-4,7	10 509	42,9
South Karelia	55 115	8,4	17 413	-1,3	37 702	13,5
Etelä-Savo	39 682	-2,5	22 505	-6,0	17 177	2,6
Pohjois-Savo	62 690	-8,9	40 664	-11,4	22 026	-4,1
North Karelia	32 064	3,1	18 733	1,6	13 331	5,5
Central Finland	87 752	-3,4	60 892	3,3	26 860	-15,9
South Ostrobothnia	28 656	-4,5	26 314	-5,9	2 342	14,2
Ostrobothnia	19 733	-1,6	15 683	3,6	4 050	-17,6
Central Ostrobothnia	8 146	3,5	7 357	-2,3	789	132,7
North Ostrobothnia	102 331	3,2	58 215	-3,9	44 116	14,5
Kainuu	68 994	-7,1	42 769	-2,9	26 225	-13,3
Lapland	230 239	-3,8	58 777	-19,5	171 462	3,1
Åland	5 108	-7,1	2 759	2,3	2 349	-16,1

Appendix table 3. Hotel capacity and capacity utilization, January 2013

Region / municipality	Number of establishments	Number of bedrooms	Occupancy rate of bedrooms %	Change compared to previous year, %-units	Room price, euros (incl. VAT 10 %)	¹⁾ RevPAR, euros (incl. VAT 10 %)
Whole country	630	50 714	45,6	-2,6	92,71	42,24
Mainland Finland	621	50 194	45,9	-2,7	92,72	42,52
Uusimaa	117	14 321	54,9	-3,4	98,29	53,97
Espoo	12	1 218	50,3	-4,1	82,16	41,34
Helsinki	53	8 479	57,8	-3,8	102,62	59,30
Vantaa	11	2 151	67,4	-0,5	101,03	68,06
Varsinais-Suomi	35	3 105	38,8	0,1	78,58	30,51
Turku	18	2 051	42,3	1,3	79,41	33,60
Satakunta	24	1 216	33,8	-4,6	86,05	29,08
Pori	9	704	33,0	-5,7	83,08	27,42
Kanta-Häme	18	1 274	31,2	-7,2	84,15	26,25
Hämeenlinna	8	737	33,4	-6,9	89,69	29,93
Pirkanmaa	43	3 784	38,4	-5,7	90,38	34,69
Tampere	24	2 725	43,2	-5,6	93,29	40,31
Päijät-Häme	17	1 738	43,0	0,6	80,71	34,72
Lahti	7	600	50,1	4,2	85,66	42,96
Kymenlaakso	15	934	37,1	-2,9	85,04	31,57
Kouvola	5	419	40,2	-4,4	82,38	33,08
South Karelia	20	1 379	54,7	-0,1	102,11	55,88
Lappeenranta	7	712	62,9	1,9	97,40	61,29
Etelä-Savo	26	1 542	37,2	0,9	69,65	25,90
Mikkeli	8	550	43,5	-0,3	77,60	33,74
Pohjois-Savo	28	2 289	43,9	-4,1	85,42	37,49
Kuopio	14	1 393	50,2	-2,0	89,32	44,86
North Karelia	24	1 301	40,4	2,8	79,79	32,27
Joensuu	9	707	44,3	2,5	81,28	36,04
Central Finland	28	2 668	44,8	-3,2	103,63	46,43
Jyväskylä	10	1 374	49,3	-6,9	99,31	48,91
South Ostrobothnia	27	1 398	40,5	-0,9	69,41	28,13
Seinäjoki	8	562	44,4	-0,8	79,26	35,19
Ostrobothnia	22	1 217	39,2	-1,2	81,25	31,82
Vaasa	8	797	43,9	-0,7	86,12	37,77
Central Ostrobothnia	10	498	33,5	-0,8	80,33	26,89
Kokkola	5	360	36,0	-2,3	88,10	31,73
North Ostrobothnia	48	3 438	38,4	-3,5	83,43	32,05
Kuusamo	10	743	39,9	-1,0	88,13	35,16
Oulu	12	1 584	44,3	-6,6	86,36	38,27
Kainuu	22	1 766	43,0	-3,6	82,00	35,25
Kajaani	6	415	32,5	-6,8	79,22	25,72
Sotkamo	7	1 078	50,8	-0,6	90,26	45,90
Lapland	97	6 326	51,6	-1,8	103,15	53,23
Rovaniemi	12	1 238	72,9	-0,7	114,26	83,25
Åland	9	520	17,1	0,1
Maarianhamina	4	309	25,9	3,0

1) RevPar = Average accommodation sales revenue per available room. Calculation formula: RevPar = Average room price * Occupancy rate.

Appendix table 4. Nights spend in hotels, January 2013

Region / municipality	Nights spend, total	Change of nights spend, total, %	Nights spend, residents	Change of nights spend, residents, %	Nights spend, non-residents	Change of nights spend, non-residents, %
Whole country	1 188 246	-3,2	668 183	-3,0	520 063	-3,5
Mainland Finland	1 184 053	-3,2	665 955	-3,0	518 098	-3,5
Uusimaa	352 470	-4,9	179 726	-1,9	172 744	-7,9
Espoo	25 580	-18,2	12 973	-17,2	12 607	-19,2
Helsinki	221 738	-5,1	96 706	-0,6	125 032	-8,3
Vantaa	65 486	-1,2	41 408	0,3	24 078	-3,7
Varsinais-Suomi	56 072	-2,2	44 740	-3,2	11 332	1,9
Turku	39 394	1,1	30 774	-3,0	8 620	18,7
Satakunta	15 918	3,7	12 355	7,3	3 563	-7,1
Pori	9 003	11,4	7 158	11,4	1 845	11,8
Kanta-Häme	19 920	-14,4	14 888	-11,1	5 032	-22,8
Hämeenlinna	11 809	-18,6	8 872	-8,9	2 937	-38,3
Pirkanmaa	68 929	-4,6	55 432	-5,3	13 497	-1,8
Tampere	52 748	-0,3	41 903	-1,5	10 845	4,6
Päijät-Häme	40 440	-2,4	31 102	5,0	9 338	-21,0
Lahti	13 798	-5,0	9 273	5,9	4 525	-21,5
Kymenlaakso	17 246	1,4	9 566	-12,0	7 680	25,2
Kouvola	8 123	-3,7	5 436	-16,6	2 687	40,5
South Karelia	47 177	1,3	15 643	-2,5	31 534	3,3
Lappeenranta	25 444	2,4	11 843	-6,1	13 601	11,2
Etelä-Savo	29 571	-7,4	20 387	-5,4	9 184	-11,5
Mikkeli	12 801	0,5	7 823	1,2	4 978	-0,6
Pohjois-Savo	55 590	-9,0	37 771	-10,6	17 819	-5,5
Kuopio	38 973	-1,8	26 775	-0,2	12 198	-5,1
North Karelia	27 743	-0,2	17 136	0,1	10 607	-0,7
Joensuu	14 081	-3,1	9 735	-10,1	4 346	17,7
Central Finland	81 170	-1,3	56 575	5,2	24 595	-13,6
Jyväskylä	32 716	2,7	25 355	10,8	7 361	-18,0
South Ostrobothnia	26 791	-4,5	25 139	-4,7	1 652	-1,4
Seinäjoki	9 649	-13,0	8 806	-15,2	843	18,4
Ostrobothnia	18 487	-4,8	14 473	-0,3	4 014	-18,3
Vaasa	13 907	-3,7	10 897	-0,1	3 010	-14,9
Central Ostrobothnia	7 268	1,8	6 769	-0,6	499	49,0
Kokkola	5 226	-3,4	4 809	-5,3	417	25,6
North Ostrobothnia	72 136	-2,5	44 396	-4,8	27 740	1,4
Kuusamo	23 838	4,8	9 623	5,8	14 215	4,2
Oulu	31 600	-4,8	23 750	-4,4	7 850	-6,0
Kainuu	57 380	-0,5	35 325	5,6	22 055	-8,9
Kajaani	5 978	-16,6	4 567	-13,9	1 411	-24,4
Sotkamo	46 880	3,9	28 409	11,6	18 471	-6,0
Lapland	189 745	-0,4	44 532	-13,8	145 213	4,6
Rovaniemi	52 561	-1,1	11 209	-3,8	41 352	-0,3
Åland	4 193	2,9	2 228	-0,3	1 965	6,7
Maarianhamina	3 487	1,5	2 012	8,3	1 475	-6,5

Appendix table 5a. Visitor arrivals and nights spend by country of residence, January 2013

Country of residence	Visitor arrivals in all accommodation establishments	Nights spend in all accommodation establishments	Change of nights spend in all accommodation establishments, %	Nights spend in hotels	Change of nights spend in hotels, %
Total	660 517	1 361 168	-3,0	1 188 246	-3,2
Finland	435 086	753 715	-4,2	668 183	-3,0
Foreign countries	225 431	607 453	-1,5	520 063	-3,5
Sweden	14 165	22 420	-4,1	21 697	-1,6
Germany	11 351	31 641	1,4	29 659	1,1
Russia	105 865	310 993	-3,3	253 593	-6,9
United Kingdom	13 778	45 993	18,2	36 974	13,7
United States	3 860	8 400	-11,9	8 230	-11,6
Norway	4 113	6 845	-2,6	6 641	-1,2
Netherlands	5 619	18 785	6,5	15 418	3,4
Italy	3 084	7 250	-17,2	6 568	-17,3
France	7 810	29 673	16,3	28 390	16,7
Japan	8 636	16 993	8,0	16 531	7,2
Estonia	6 458	15 237	-20,7	12 450	-14,2
Spain	2 015	6 154	9,9	4 717	-9,2

Suomen virallinen tilasto
Finlands officiella statistik
Official Statistics of Finland

Transport and Tourism 2013

Inquiries

Marjut Tuominen 09 1734 3556

Merja Rönkä 09 1734 3209

Director in charge:

Hannele Orjala

liikenne.matkailu@stat.fi

www.stat.fi

Source: Accommodation Statistics. Statistics Finland