

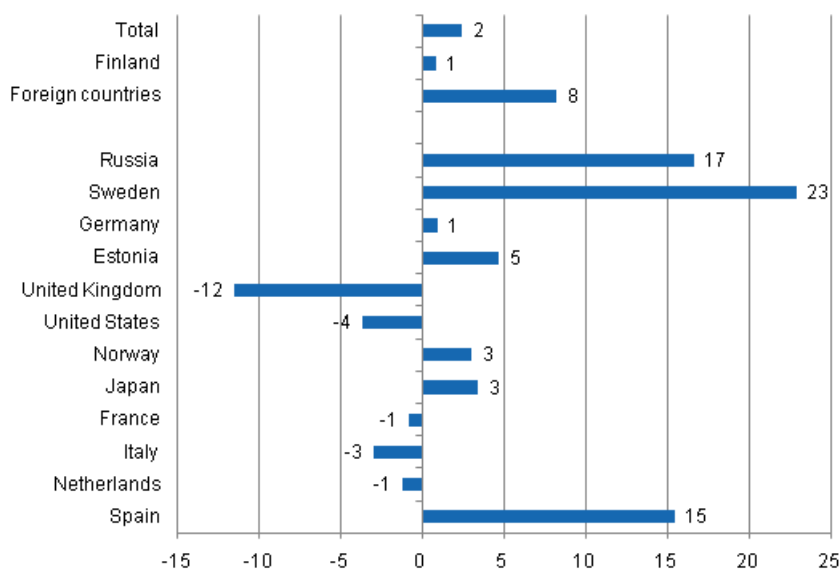
Accommodation statistics

2011, October

Nights spent by foreign tourists in Finland up by 8 per cent in October

The number of recorded nights spent by non-resident tourists at Finnish accommodation establishments in October 2011 was 313,000, which was 8 per cent up on October 2010. The total number of overnight stays increased by 2 per cent from last year and accommodation establishments recorded altogether 1.4 million of them. The number of nights spent by resident tourists went up by one per cent and totalled 1.1 million in October 2011. These figures are preliminary data from Statistics Finland's statistics on accommodation establishments and they have been collected from accommodation establishments with at least 10 rooms, cottages, or caravan pitches with electricity connection, and youth hostels.

Change in overnight stays in October 2011/2010, %

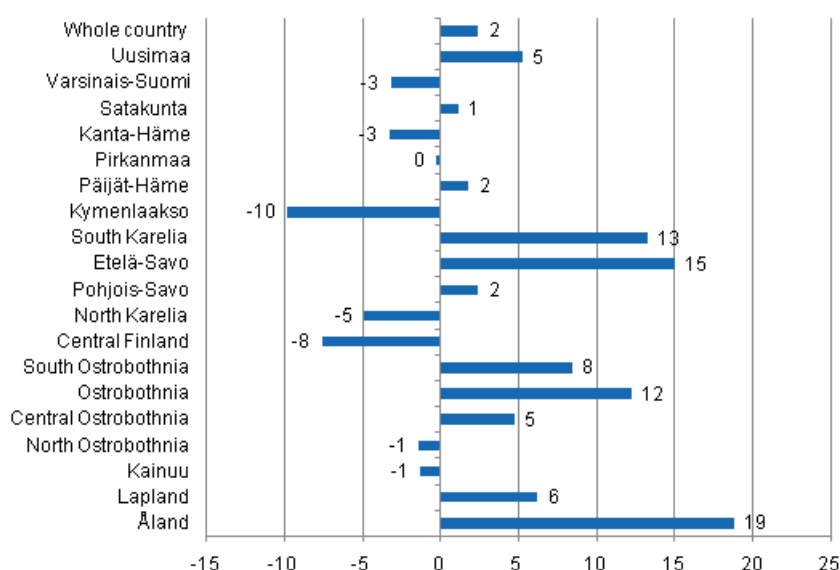


Russians continued to be the largest group of foreign tourists also in October with their 65,000 overnight stays. The number of nights recorded for them at Finnish accommodation establishments was 17 per cent higher than one year earlier. Swedes were next with 36,000 nights spent. The number was 23 per cent

higher than in October 2010. Visitors from Germany came third with 26,000 nights spent, which was one per cent up year-on-year. Compared with October 2010, the number of nights spent by Spanish tourists was 15 per cent up and that of nights spent by Estonian tourists 5 per cent up. Overnight stays by visitors from Norway and Japan both increased by 3 per cent. By contrast, overnight stays at accommodation establishments by British tourists fell by 11.5 per cent and those by visitors from the USA by 4 per cent from last year.

By region, the total number of overnight stays increased most in the regions of Åland, up by 19 per cent, and Etelä-Savo, up by 15 per cent. In South Karelia, recorded overnight stays went up by 13 per cent and in Ostrobothnia by 12 per cent from the year before. Overnight stays increased by 8 per cent in South Ostrobothnia and by 6 per cent in Lapland. Five per cent growth was achieved in Uusimaa and Central Ostrobothnia. Overnight stays decreased most in Kymenlaakso, 10 per cent down, and in Central Finland, 8 per cent down. In the whole country, overnight stays increased by 2 per cent from October 2010.

Change in overnight stays in October by region 2011 / 2010, %



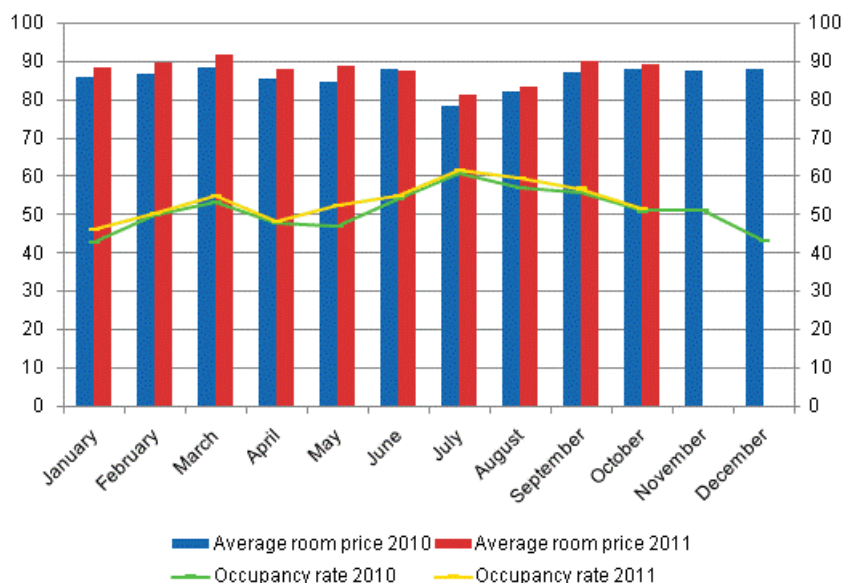
Overnight stays in hotels increased by 2 per cent in October

The total number of nights spent in hotels rose to 1.2 million in October, which was 2 per cent up on the year before. Overnight stays by foreign tourists increased by eight per cent and hotels recorded a total of 290,000 million of them. Recorded nights spent by resident tourists in hotels numbered just under 960,000. This was one per cent up on the year before.

The occupancy rate of hotel rooms was 51.7 per cent in October. One year earlier it was 51.0 per cent. Among the regions, the highest occupancy rates of hotel rooms were measured in Uusimaa, 67.4 per cent, and Pirkanmaa, 63.3 per cent. In Vantaa, the hotel room occupancy rate was 72.8 per cent and in Tampere 69.1 per cent. Hotel room occupancy rate in Helsinki was 73.6 per cent.

In October, the realised average price of a hotel room was EUR 89.40 per day for the whole country. Twelve months previously it was EUR 87.78.

Hotel room occupancy rate and the monthly average price

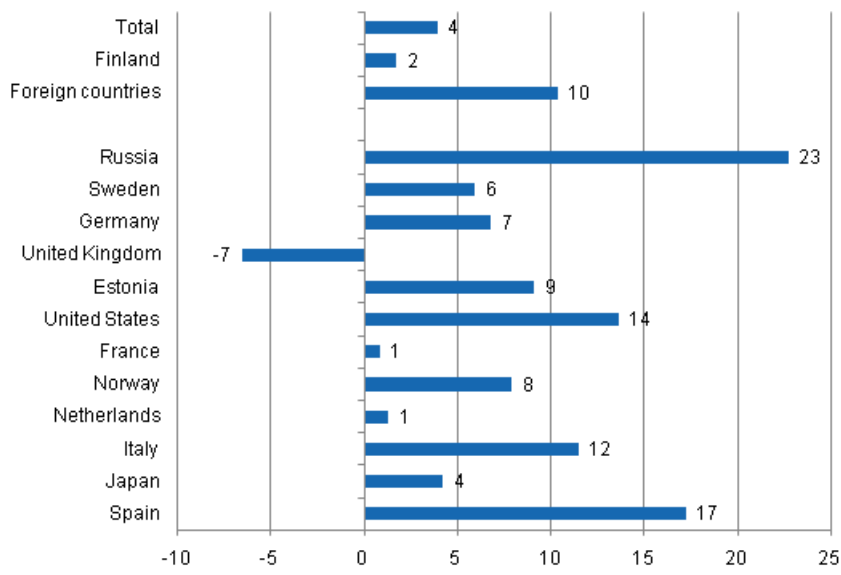


Total number of nights spent at all accommodation establishments went up by 4 per cent in the January to October 2011 period

Between January and October, the number of nights spent at accommodation establishments in Finland totalled 17 million, which was 4 per cent up on the respective time period of last year. Overnight stays by foreign tourists increased by 10 per cent and accommodation establishments recorded a total of 4.7 million of them. Overnight stays by resident tourists numbered 12.7 million, which was 2 per cent more than in the same time period last year.

Among the most important countries of inbound tourism to Finland, overnight stays by visitors from Russia increased most, or by 23 per cent, in the January to October period. Overnight stays by Spanish tourists went up by 17 per cent and those by visitors from the United States by 14 per cent year-on-year. Recorded nights spent by Italian tourists increased by 11.5 per cent and those by Estonian tourists by 9 per cent from the respective time period of the year before. Overnight stays by Norwegian tourists increased by 8 per cent and those by German tourists by 7 per cent. By contrast, nights spent at accommodation establishments by tourists from Britain have been decreasing almost throughout the January-October period of the current year, the further drop now amounting to 6.5 per cent.

Change in overnight stays in January-October 2011/2010, %



Contents

Tables

Appendix tables

| | |
|--|----|
| Appendix table 1. Capacity and its utilization, October 2011..... | 6 |
| Appendix table 2. Nights spend in all establishments, October 2011..... | 7 |
| Appendix table 3. Hotel capacity and capacity utilization, October 2011..... | 8 |
| Appendix table 4. Nights spend in hotels, October 2011..... | 9 |
| Appendix table 5. Visitor arrivals and nights spend by country of residence, October 2011..... | 10 |
| Appendix table 6. Nights spend in all establishments, 2011..... | 10 |

Appendix tables

Appendix table 1. Capacity and its utilization, October 2011

| Region / municipality | Number of establishments | Number of bedrooms | Occupancy rate of bedrooms % | Change of the occupancy rate compared to previous year, %-units | Average price of nights spend, in euros (incl. VAT 9 %) |
|-----------------------|--------------------------|--------------------|------------------------------|---|---|
| Whole country | 993 | 56 162 | 48,1 | 0,5 | 54,68 |
| Mainland Finland | 952 | 55 036 | 48,6 | 0,4 | 54,69 |
| Uusimaa | 136 | 14 440 | 66,7 | 1,2 | 67,91 |
| Helsinki | 59 | 8 487 | 73,2 | 2,0 | 71,48 |
| Varsinais-Suomi | 63 | 3 722 | 48,8 | -5,3 | 48,94 |
| Turku | 23 | 2 172 | 54,9 | -9,3 | 50,15 |
| Satakunta | 36 | 1 457 | 39,6 | -0,7 | 53,82 |
| Pori | 10 | 726 | 41,7 | -0,7 | 47,58 |
| Kanta-Häme | 27 | 1 379 | 39,4 | -0,9 | 49,25 |
| Hämeenlinna | 11 | 774 | 46,0 | -3,5 | 53,85 |
| Pirkanmaa | 65 | 3 944 | 59,9 | -0,2 | 51,14 |
| Tampere | 24 | 2 470 | 69,6 | -0,4 | 57,14 |
| Päijät-Häme | 29 | 1 910 | 41,0 | 2,4 | 47,49 |
| Lahti | 10 | 736 | 46,7 | 6,0 | 55,61 |
| Kymenlaakso | 21 | 1 116 | 38,2 | -4,0 | 49,22 |
| Kouvola | 9 | 555 | 34,1 | -3,1 | 44,96 |
| South Karelia | 28 | 1 389 | 53,3 | 5,2 | 53,55 |
| Lappeenranta | 9 | 562 | 67,6 | 6,8 | 55,50 |
| Etelä-Savo | 55 | 2 032 | 34,1 | 1,7 | 42,46 |
| Mikkeli | 7 | 533 | 47,7 | -0,5 | 50,58 |
| Pohjois-Savo | 44 | 2 404 | 51,5 | 5,0 | 45,55 |
| Kuopio | 13 | 1 004 | 65,5 | 6,9 | 52,37 |
| North Karelia | 41 | 1 579 | 36,4 | -1,2 | 44,51 |
| Joensuu | 11 | 760 | 45,1 | -0,4 | 53,60 |
| Central Finland | 47 | 2 811 | 45,8 | -3,4 | 48,41 |
| Jyväskylä | 13 | 1 308 | 60,6 | -3,8 | 63,86 |
| South Ostrobothnia | 39 | 1 701 | 47,3 | -0,9 | 42,21 |
| Seinäjoki | 9 | 615 | 54,9 | -7,3 | 58,16 |
| Ostrobothnia | 31 | 1 388 | 49,2 | 6,2 | 54,59 |
| Vaasa | 10 | 856 | 53,4 | 7,6 | 58,57 |
| Central Ostrobothnia | 15 | 553 | 48,4 | 1,9 | 52,08 |
| Kokkola | 7 | 395 | 55,8 | 3,7 | 57,57 |
| North Ostrobothnia | 85 | 4 116 | 40,7 | 0,3 | 45,27 |
| Oulu | 11 | 1 451 | 63,6 | 2,0 | 54,68 |
| Kainuu | 41 | 2 099 | 43,4 | -2,5 | 34,57 |
| Kajaani | 9 | 496 | 30,6 | -2,7 | 56,35 |
| Lapland | 149 | 6 996 | 22,5 | 1,9 | 44,12 |
| Rovaniemi | 17 | 1 388 | 28,6 | -2,0 | 40,55 |
| Åland | 41 | 1 126 | 20,6 | 2,2 | . |
| Maarianhamina | 11 | 547 | 30,7 | 4,4 | . |

Appendix table 2. Nights spend in all establishments, October 2011

| Region / municipality | Nights spend, total | Change of nights spend, total, % | Nights spend, residents | Change of nights spend, residents, % | Nights spend, non-residents | Change of nights spend, non-residents, % |
|-----------------------|---------------------|----------------------------------|-------------------------|--------------------------------------|-----------------------------|--|
| Whole country | 1 396 328 | 2,4 | 1 083 313 | 0,8 | 313 015 | 8,2 |
| Mainland Finland | 1 382 121 | 2,2 | 1 076 883 | 0,7 | 305 238 | 7,9 |
| Uusimaa | 446 940 | 5,2 | 261 019 | 2,0 | 185 921 | 9,9 |
| Helsinki | 289 058 | 4,5 | 145 631 | 1,5 | 143 427 | 7,8 |
| Varsinais-Suomi | 95 686 | -3,2 | 82 581 | -2,7 | 13 105 | -6,1 |
| Turku | 61 035 | -7,0 | 51 818 | -5,4 | 9 217 | -15,2 |
| Satakunta | 26 607 | 1,1 | 21 724 | 1,6 | 4 883 | -1,0 |
| Pori | 14 432 | 5,0 | 12 688 | 9,9 | 1 744 | -20,9 |
| Kanta-Häme | 30 008 | -3,3 | 27 014 | -3,1 | 2 994 | -5,0 |
| Hämeenlinna | 19 240 | -7,4 | 17 071 | -7,1 | 2 169 | -9,7 |
| Pirkanmaa | 130 405 | -0,3 | 115 829 | 1,2 | 14 576 | -10,2 |
| Tampere | 86 192 | 1,7 | 74 120 | 4,2 | 12 072 | -11,2 |
| Päijät-Häme | 45 870 | 1,8 | 40 402 | 0,8 | 5 468 | 9,8 |
| Lahti | 15 682 | 2,6 | 12 126 | 3,4 | 3 556 | -0,0 |
| Kymenlaakso | 21 996 | -9,8 | 17 187 | -12,9 | 4 809 | 3,3 |
| Kouvola | 9 618 | -14,5 | 8 442 | -15,9 | 1 176 | -2,4 |
| South Karelia | 39 447 | 13,3 | 22 486 | 12,2 | 16 961 | 14,8 |
| Lappeenranta | 18 101 | 9,9 | 12 493 | 13,4 | 5 608 | 2,8 |
| Etelä-Savo | 36 424 | 15,0 | 30 676 | 12,6 | 5 748 | 29,9 |
| Mikkeli | 12 355 | 2,6 | 10 649 | 1,0 | 1 706 | 13,9 |
| Pohjois-Savo | 67 496 | 2,4 | 62 947 | 1,8 | 4 549 | 12,2 |
| Kuopio | 33 145 | 4,4 | 31 067 | 4,5 | 2 078 | 2,3 |
| North Karelia | 30 756 | -4,9 | 27 667 | -5,0 | 3 089 | -4,2 |
| Joensuu | 14 886 | -1,1 | 12 918 | -1,1 | 1 968 | -0,6 |
| Central Finland | 68 821 | -7,6 | 63 103 | -7,7 | 5 718 | -6,6 |
| Jyväskylä | 37 303 | -5,8 | 32 985 | -6,7 | 4 318 | 1,1 |
| South Ostrobothnia | 46 898 | 8,4 | 44 747 | 6,4 | 2 151 | 79,1 |
| Seinäjoki | 15 486 | 4,4 | 14 516 | 2,7 | 970 | 38,8 |
| Ostrobothnia | 32 234 | 12,2 | 26 846 | 10,7 | 5 388 | 20,5 |
| Vaasa | 20 831 | 6,1 | 16 449 | 2,1 | 4 382 | 24,5 |
| Central Ostrobothnia | 12 748 | 4,7 | 11 751 | 7,7 | 997 | -20,9 |
| Kokkola | 9 321 | 11,5 | 8 524 | 16,4 | 797 | -22,8 |
| North Ostrobothnia | 96 858 | -1,4 | 84 856 | -1,3 | 12 002 | -1,6 |
| Oulu | 46 534 | -0,8 | 39 853 | 0,9 | 6 681 | -9,8 |
| Kainuu | 74 378 | -1,3 | 70 666 | -2,1 | 3 712 | 16,8 |
| Kajaani | 6 640 | -11,9 | 6 108 | -14,0 | 532 | 21,7 |
| Lapland | 78 549 | 6,2 | 65 382 | 3,8 | 13 167 | 20,3 |
| Rovaniemi | 21 166 | -2,0 | 15 046 | -8,2 | 6 120 | 17,3 |
| Åland | 14 207 | 18,8 | 6 430 | 14,7 | 7 777 | 22,4 |
| Maarianhamina | 8 651 | 15,5 | 4 836 | 10,9 | 3 815 | 22,0 |

Appendix table 3. Hotel capacity and capacity utilization, October 2011

| Region / municipality | Number of establishments | Number of bedrooms | Occupancy rate of bedrooms % | Change of the occupancy rate compared to previous year, %-units | Room price, euros (Vat inc. 9 %) | ¹⁾ RevPAR, euros (Vat inc. 9 %) |
|-----------------------|--------------------------|--------------------|------------------------------|---|----------------------------------|--|
| Whole country | 615 | 49 130 | 51,7 | 0,7 | 89,40 | 46,21 |
| Mainland Finland | 602 | 48 419 | 52,1 | 0,7 | 89,38 | 46,54 |
| Uusimaa | 113 | 14 048 | 67,4 | 1,5 | 101,0 | 68,08 |
| Helsinki | 52 | 8 318 | 73,6 | 2,4 | 105,6 | 77,76 |
| Varsinais-Suomi | 38 | 3 156 | 52,1 | -5,5 | 81,93 | 42,66 |
| Turku | 19 | 2 074 | 55,8 | -9,3 | 83,66 | 46,68 |
| Satakunta | 23 | 1 172 | 45,7 | -0,7 | 80,63 | 36,85 |
| Pori | 7 | 623 | 45,9 | -0,3 | 75,31 | 34,57 |
| Kanta-Häme | 17 | 1 219 | 42,5 | -1,2 | 87,89 | 37,33 |
| Hämeenlinna | 8 | 732 | 47,4 | -3,8 | 93,60 | 44,38 |
| Pirkanmaa | 41 | 3 348 | 63,3 | -1,1 | 91,38 | 57,84 |
| Tampere | 21 | 2 318 | 69,1 | -0,5 | 92,38 | 63,86 |
| Päijät-Häme | 17 | 1 764 | 42,8 | 3,0 | 77,84 | 33,35 |
| Lahti | 8 | 713 | 46,6 | 6,0 | 81,69 | 38,11 |
| Kymenlaakso | 15 | 946 | 41,5 | -4,4 | 80,11 | 33,23 |
| Kouvola | 6 | 435 | 39,3 | -2,6 | 76,33 | 29,99 |
| South Karelia | 17 | 1 209 | 58,2 | 6,5 | 93,19 | 54,27 |
| Lappeenranta | 6 | 504 | 72,7 | 6,6 | 85,49 | 62,12 |
| Etelä-Savo | 29 | 1 564 | 38,7 | 2,5 | 71,49 | 27,65 |
| Mikkeli | 5 | 487 | 49,5 | -1,4 | 77,40 | 38,28 |
| Pohjois-Savo | 28 | 2 188 | 53,6 | 5,3 | 79,95 | 42,86 |
| Kuopio | 8 | 926 | 66,6 | 7,1 | 85,40 | 56,88 |
| North Karelia | 24 | 1 346 | 39,7 | -1,0 | 75,17 | 29,85 |
| Joensuu | 10 | 750 | 45,5 | -0,4 | 75,53 | 34,34 |
| Central Finland | 27 | 2 482 | 48,8 | -3,9 | 83,11 | 40,53 |
| Jyväskylä | 9 | 1 202 | 64,6 | -3,0 | 96,63 | 62,42 |
| South Ostrobothnia | 23 | 1 441 | 52,7 | -1,5 | 75,71 | 39,94 |
| Seinäjoki | 8 | 615 | 54,9 | -7,3 | 80,04 | 43,94 |
| Ostrobothnia | 23 | 1 285 | 51,0 | 6,6 | 83,36 | 42,54 |
| Vaasa | 10 | 856 | 53,4 | 7,6 | 86,06 | 45,98 |
| Central Ostrobothnia | 10 | 494 | 51,1 | 4,2 | 74,96 | 38,34 |
| Kokkola | 5 | 367 | 56,4 | 3,5 | 78,75 | 44,43 |
| North Ostrobothnia | 49 | 3 350 | 43,6 | 0,1 | 80,01 | 34,90 |
| Oulu | 10 | 1 423 | 63,5 | 2,0 | 84,52 | 53,64 |
| Kainuu | 22 | 1 667 | 50,3 | -1,9 | 72,84 | 36,67 |
| Kajaani | 7 | 449 | 33,4 | -2,9 | 79,86 | 26,70 |
| Lapland | 86 | 5 740 | 24,4 | 2,2 | 74,77 | 18,27 |
| Rovaniemi | 12 | 1 251 | 29,2 | -2,7 | 70,02 | 20,41 |
| Åland | 13 | 711 | 26,3 | 2,4 | . | . |
| Maarianhamina | 7 | 483 | 34,1 | 5,1 | . | . |

1) RevPar = Average revenue per available room, equivalent to the accommodation revenue of an establishment divided by the available room capacity.

Appendix table 4. Nights spend in hotels, October 2011

| Region / municipality | Nights spend, total | Change of nights spend, total, % | Nights spend, residents | Change of nights spend, residents, % | Nights spend, non-residents | Change of nights spend, non-residents, % |
|-----------------------|---------------------|----------------------------------|-------------------------|--------------------------------------|-----------------------------|--|
| Whole country | 1 248 094 | 2,4 | 958 458 | 0,7 | 289 636 | 8,3 |
| Mainland Finland | 1 238 094 | 2,3 | 953 343 | 0,7 | 284 751 | 8,1 |
| Uusimaa | 428 388 | 5,3 | 250 295 | 1,9 | 178 093 | 10,5 |
| Helsinki | 275 526 | 4,8 | 138 897 | 1,3 | 136 629 | 8,5 |
| Varsinais-Suomi | 83 850 | -5,5 | 72 228 | -4,9 | 11 622 | -8,6 |
| Turku | 59 085 | -7,8 | 50 629 | -6,2 | 8 456 | -16,1 |
| Satakunta | 22 925 | 2,3 | 18 325 | 3,8 | 4 600 | -3,2 |
| Pori | 12 825 | 10,0 | 11 194 | 16,7 | 1 631 | -21,1 |
| Kanta-Häme | 26 868 | -4,1 | 24 056 | -3,9 | 2 812 | -5,7 |
| Hämeenlinna | 17 944 | -8,1 | 15 775 | -7,8 | 2 169 | -9,7 |
| Pirkanmaa | 112 988 | -0,3 | 100 685 | 1,1 | 12 303 | -10,3 |
| Tampere | 79 571 | 1,9 | 68 603 | 4,2 | 10 968 | -10,1 |
| Päijät-Häme | 41 125 | 2,6 | 36 132 | 1,5 | 4 993 | 11,3 |
| Lahti | 15 094 | 3,2 | 11 720 | 4,2 | 3 374 | -0,1 |
| Kymenlaakso | 17 806 | -9,8 | 13 296 | -14,0 | 4 510 | 5,5 |
| Kouvola | 7 665 | -7,0 | 6 510 | -9,1 | 1 155 | 7,0 |
| South Karelia | 37 936 | 14,2 | 21 284 | 13,3 | 16 652 | 15,5 |
| Lappeenranta | 17 644 | 9,1 | 12 151 | 12,1 | 5 493 | 3,1 |
| Etelä-Savo | 30 010 | 18,6 | 25 503 | 16,0 | 4 507 | 35,6 |
| Mikkeli | 11 324 | 0,1 | 9 951 | 0,2 | 1 373 | -0,4 |
| Pohjois-Savo | 61 869 | 2,2 | 58 164 | 1,6 | 3 705 | 12,6 |
| Kuopio | 30 010 | 4,5 | 28 073 | 4,2 | 1 937 | 7,7 |
| North Karelia | 27 085 | -4,7 | 24 470 | -3,7 | 2 615 | -12,8 |
| Joensuu | 14 812 | -1,1 | 12 865 | -1,1 | 1 947 | -0,6 |
| Central Finland | 62 755 | -7,9 | 57 368 | -8,1 | 5 387 | -6,7 |
| Jyväskylä | 36 362 | -7,2 | 32 234 | -7,6 | 4 128 | -3,4 |
| South Ostrobothnia | 40 723 | 8,3 | 39 104 | 7,0 | 1 619 | 51,2 |
| Seinäjoki | 14 403 | 3,9 | 13 433 | 2,1 | 970 | 38,8 |
| Ostrobothnia | 29 456 | 8,9 | 24 120 | 6,8 | 5 336 | 19,3 |
| Vaasa | 20 831 | 6,1 | 16 449 | 2,1 | 4 382 | 24,5 |
| Central Ostrobothnia | 10 809 | 4,3 | 9 976 | 5,9 | 833 | -12,2 |
| Kokkola | 8 394 | 7,2 | 7 758 | 9,1 | 636 | -11,8 |
| North Ostrobothnia | 76 012 | -1,5 | 66 126 | -0,8 | 9 886 | -5,7 |
| Oulu | 42 944 | -0,2 | 37 144 | 0,9 | 5 800 | -6,9 |
| Kainuu | 63 312 | -2,0 | 59 884 | -2,9 | 3 428 | 17,8 |
| Kajaani | 6 555 | -11,5 | 6 023 | -13,6 | 532 | 21,7 |
| Lapland | 64 177 | 9,4 | 52 327 | 6,5 | 11 850 | 23,8 |
| Rovaniemi | 18 357 | -4,1 | 12 654 | -12,6 | 5 703 | 22,2 |
| Åland | 10 000 | 14,3 | 5 115 | 9,7 | 4 885 | 19,5 |
| Maarianhamina | 8 450 | 16,0 | 4 727 | 11,1 | 3 723 | 22,7 |

Appendix table 5. Visitor arrivals and nights spend by country of residence, October 2011

| Country of residence | Visitor arrivals in all accommodation establishments | Nights spend in all accommodation establishments | Change of nights spend in all accommodation establishments, % | Nights spend in hotels | Change of nights spend in hotels, % |
|----------------------|--|--|---|------------------------|-------------------------------------|
| Total | 786 543 | 1 396 328 | 2,4 | 1 248 094 | 2,4 |
| Finland | 621 670 | 1 083 313 | 0,8 | 958 458 | 0,7 |
| Foreign countries | 164 873 | 313 015 | 8,2 | 289 636 | 8,3 |
| Sweden | 23 110 | 35 681 | 22,9 | 33 714 | 23,4 |
| Germany | 11 854 | 25 742 | 0,9 | 23 640 | 3,1 |
| Russia | 39 220 | 64 753 | 16,6 | 59 819 | 15,1 |
| United Kingdom | 8 690 | 16 849 | -11,5 | 16 427 | -11,4 |
| United States | 6 753 | 14 951 | -3,7 | 14 682 | -2,2 |
| Norway | 5 385 | 9 527 | 3,0 | 9 057 | 1,7 |
| Netherlands | 3 658 | 6 579 | -1,2 | 6 250 | -1,6 |
| Italy | 3 200 | 7 268 | -3,0 | 6 805 | 2,7 |
| France | 4 013 | 8 724 | -0,8 | 8 072 | 2,5 |
| Japan | 4 768 | 8 898 | 3,4 | 8 674 | 4,5 |
| Estonia | 7 188 | 17 471 | 4,7 | 12 625 | 6,4 |
| Spain | 2 749 | 6 432 | 15,4 | 5 947 | 14,3 |

Appendix table 6. Nights spend in all establishments, 2011

| Month | Nights spend, total | Change of nights spend, total, % | Nights spend, residents | Change of nights spend, residents, % | Nights spend, non-residents | Change of nights spend, non-residents, % |
|-----------|---------------------|----------------------------------|-------------------------|--------------------------------------|-----------------------------|--|
| Total | 17 387 196 | 3,9 | 12 721 254 | 1,7 | 4 665 942 | 10,4 |
| January | 1 314 800 | 7,9 | 777 122 | 6,8 | 537 678 | 9,4 |
| February | 1 340 786 | 1,2 | 990 973 | 1,1 | 349 813 | 1,5 |
| March | 1 673 793 | 2,9 | 1 255 071 | 0,3 | 418 722 | 11,9 |
| April | 1 397 066 | 1,1 | 1 094 310 | -3,1 | 302 756 | 19,4 |
| May | 1 330 554 | 9,5 | 965 851 | 8,2 | 364 703 | 13,1 |
| June | 2 027 627 | 4,1 | 1 504 533 | 2,2 | 523 094 | 10,1 |
| July | 3 136 449 | 2,3 | 2 393 166 | 0,5 | 743 283 | 8,4 |
| August | 2 199 647 | 5,1 | 1 486 169 | 1,6 | 713 478 | 13,2 |
| September | 1 570 146 | 4,5 | 1 170 746 | 2,6 | 399 400 | 10,5 |
| October | 1 396 328 | 2,4 | 1 083 313 | 0,8 | 313 015 | 8,2 |

Suomen virallinen tilasto
Finlands officiella statistik
Official Statistics of Finland

Transport and Tourism 2011

Inquiries

Marjut Tuominen (09) 1734 3556

Merja Rönkä (09) 1734 3209

Director in charge:

Hannele Orjala

liikenne.matkailu@stat.fi

www.stat.fi

Source: Accommodation Statistics 2011. Statistics Finland