

Accommodation statistics

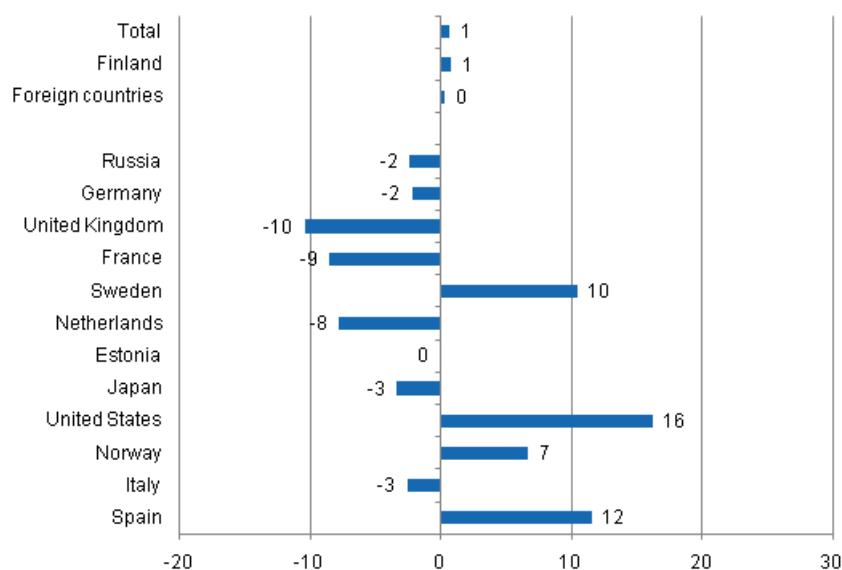
2011, February

Nights spent by resident tourists went up by one per cent in February

Corrected on 18 April 2011. The corrections are indicated in red.

The number of recorded nights spent by resident tourists at Finnish accommodation establishments in February 2011 was 988,000, which is one per cent more than in February 2010. The total number of overnight stays increased by just under one per cent from last year and altogether 1.3 million overnight stays were recorded at accommodation establishments. Overnight stays by foreign tourists numbered 346,000, which was almost the same as in last year's February. These figures are preliminary data from Statistics Finland's statistics on accommodation establishments and they have been collected from accommodation establishments with at least 10 rooms, cottages, or caravan pitches with electricity connection, and youth hostels.

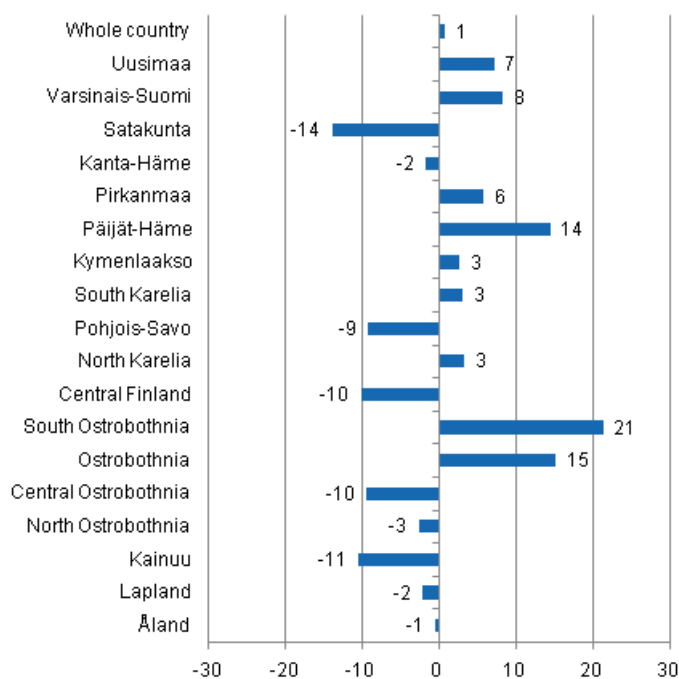
Change in overnight stays in February 2011/2010, %



The prolonged growth in the number of nights spent by Russian tourists at accommodation establishments halted in February 2011. Nevertheless, with 60,000 nights spent they continued to be the largest group of foreign tourists in February even though their recorded number of overnight stays at accommodation establishments was two per cent down on one year back. The next largest groups were visitors from Germany and the United Kingdom with good 35,000 overnight stays each. The overnight stays of British tourists decreased by 10 per cent and those of German tourists by two per cent from last year. Nights spent by visitors from almost all the most important countries of inbound tourism to Finland decreased in February. The only groups for which increases in overnight stays were recorded in February were visitors from the USA, Sweden, Norway and Spain. The biggest growths in the number of overnight stays were recorded for visitors from the USA, up by 16 per cent, and Sweden and Spain, both showing an increase of 10 to 11 per cent from February 2010.

By region, the total number of overnight stays increased most in the regions of South Ostrobothnia, up by 21 per cent, and Ostrobothnia up by 15 per cent. The number of recorded overnight stays went up by 14 per cent in Päijät-Häme and eight per cent in Varsinais-Suomi from the year before. Over-night stays decreased most in Satakunta, by 14 per cent and Kainuu, by 11 per cent.

Change in overnight stays in February by region 2011 / 2010, %



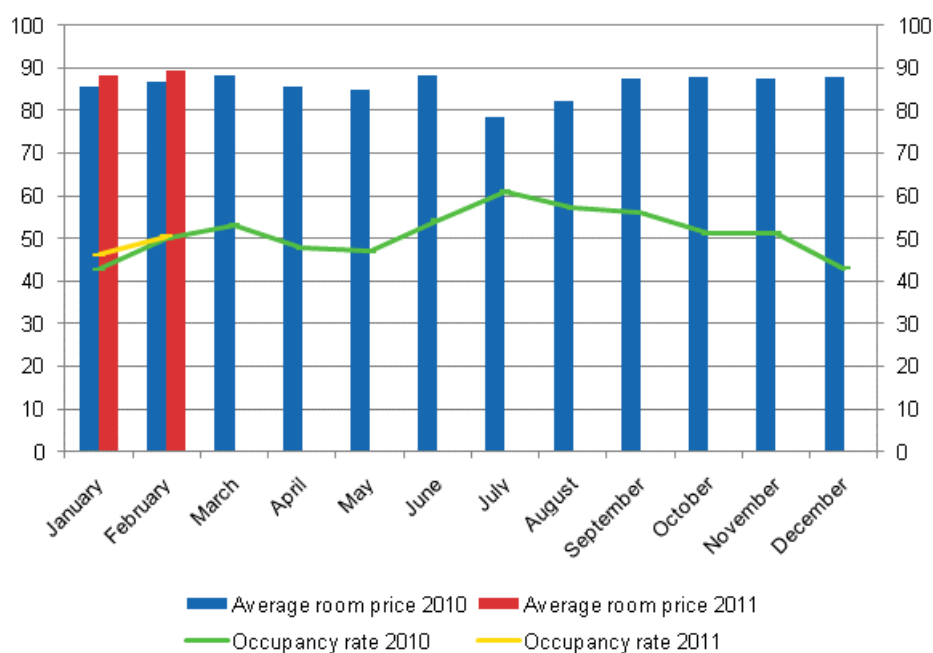
Overnight stays in hotels increased by almost two per cent in February

The total number of nights spent in hotels rose to nearly 1.2 million, which was almost two per cent up on the year before. The number of nights spent by resident tourists increased by two per cent and that of nights spent by foreign tourists by good one per cent from February 2010.

The occupancy rate of hotel rooms was 50.5 per cent in February. One year earlier, it was 49.9 per cent. Examined by region, the highest hotel room occupancy rates were recorded in the regions of Pirkanmaa, 58.2 per cent, and Uusimaa, 56.3 per cent. In Tampere, the hotel room occupancy rate was 64.1 per cent and in Helsinki 58.7 per cent.

In February, the realised average price of a hotel room was EUR 89.28 per day for the whole country. Twelve months earlier it was EUR 86.61.

Hotel room occupancy rate and the monthly average price

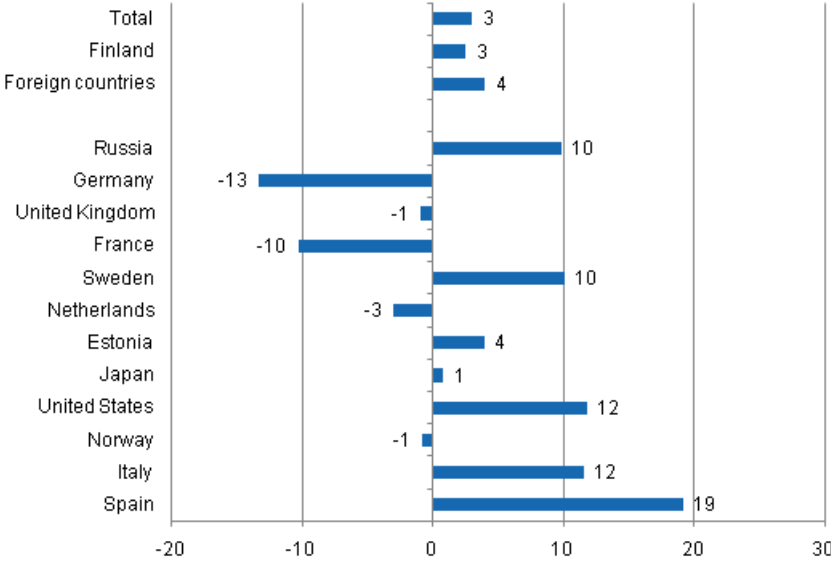


Total number of nights spent at all accommodation establishments went up by three per cent in the early part of the year

During January and February this year, the number of nights spent at accommodation establishments in Finland totalled 2.6 million, which was three per cent up on the respective time period of last year. Overnight stays by foreign tourists increased by four per cent and their total recorded number was nearly 870,000. Resident tourists spent 1.7 million nights and the growth from the early part of 2010 was 2.5 per cent.

Among the most important countries of inbound tourism to Finland, overnight stays by Spanish visitors increased most, or by 19 per cent. The growth in the number of overnight stays of tourists from both the USA and Norway amounted to 12 per cent. Ten per cent growth was recorded by accommodation establishments in the number of nights spent by tourists from both Russia and Sweden. By contrast, the overnight stays of visitors from the United Kingdom decreased by 13 per cent and those of visitors from France by 10 per cent from the previous year's corresponding time period.

Change in overnight stays in January-February 2011/2010,



Contents

Tables

Appendix tables

Appendix table 1. Capacity and its utilization, February 2011.....	7
Appendix table 2. Nights spend in all establishments, February 2011.....	8
Appendix table 3. Hotel capacity and capacity utilization, February 2011.....	9
Appendix table 4. Nights spend in hotels, February 2011.....	10
Appendix table 5. Visitor arrivals and nights spend by country of residence, February 2011.....	11
Appendix table 6. Nights spend in all establishments, 2011.....	11

Appendix tables

Appendix table 1. Capacity and its utilization, February 2011

Region / municipality	Number of establishments	Number of bedrooms	Occupancy rate of bedrooms %	Change of the occupancy rate compared to previous year, %-units	Average price of nights spend, in euros (incl. VAT 9 %)
Whole country	952	55 081	48,2	0,3	51,52
Mainland Finland	928	54 356	48,6	0,3	51,53
Uusimaa	131	14 101	56,0	1,0	65,45
Helsinki	59	8 477	58,7	1,5	68,21
Varsinais-Suomi	54	3 385	44,1	3,2	50,21
Turku	21	2 013	47,1	1,4	50,45
Satakunta	33	1 367	35,3	-7,3	56,59
Pori	9	656	36,0	-17,7	50,35
Kanta-Häme	27	1 352	35,2	0,4	50,47
Hämeenlinna	11	756	38,4	2,6	56,06
Pirkanmaa	62	3 842	56,2	2,3	52,02
Tampere	22	2 341	64,8	1,5	60,83
Päijät-Häme	28	1 849	44,3	4,3	48,02
Lahti	9	677	47,5	2,7	56,48
Kymenlaakso	21	1 103	33,7	4,4	55,35
Kouvola	9	554	31,8	1,7	50,68
South Karelia	26	1 312	45,4	2,7	51,18
Lappeenranta	9	559	52,9	1,8	55,01
Etelä-Savo	53	1 768	32,1	-2,2	41,15
Mikkeli	7	497	46,4	-5,0	48,14
Pohjois-Savo	41	2 390	53,0	-2,8	43,87
Kuopio	13	1 018	60,9	-7,5	51,42
North Karelia	40	1 557	37,9	-0,7	47,84
Joensuu	11	759	45,7	-3,0	56,53
Central Finland	48	2 848	50,0	-5,2	39,06
Jyväskylä	12	1 307	56,1	-4,9	53,23
South Ostrobothnia	35	1 567	46,6	7,5	43,66
Seinäjoki	9	534	64,1	16,7	54,39
Ostrobothnia	28	1 360	42,3	7,1	57,12
Vaasa	10	877	45,8	7,3	60,88
Central Ostrobothnia	15	563	38,8	-2,5	48,89
Kokkola	7	388	46,5	1,0	54,74
North Ostrobothnia	84	4 047	46,6	-2,2	42,39
Oulu	11	1 450	62,9	-1,4	53,88
Kainuu	40	2 026	48,2	-3,6	36,01
Kajaani	9	500	36,1	-1,8	46,21
Lapland	162	7 919	49,0	-0,8	47,32
Rovaniemi	16	1 355	72,6	-0,6	55,94
Åland	24	725	19,1	-0,5	.
Maarianhamina	9	433	22,3	-6,8	.

Appendix table 2. Nights spend in all establishments, February 2011

Region / municipality	Nights spend, total	Change of nights spend, total, %	Nights spend, residents	Change of nights spend, residents, %	Nights spend, non-residents	Change of nights spend, non-residents, %
Whole country	1 333 656	0,7	987 922	0,8	345 734	0,3
Mainland Finland	1 327 504	0,7	984 955	0,8	342 549	0,3
Uusimaa	322 173	7,1	194 135	8,5	128 038	5,1
Helsinki	203 102	6,8	104 557	9,6	98 545	4,1
Varsinais-Suomi	69 262	8,3	59 398	8,9	9 864	4,4
Turku	43 079	4,3	36 630	5,8	6 449	-3,5
Satakunta	19 510	-13,9	15 242	-10,6	4 268	-24,1
Pori	9 831	-30,5	8 368	-22,6	1 463	-56,3
Kanta-Häme	23 953	-1,8	22 203	0,3	1 750	-21,7
Hämeenlinna	14 459	4,4	13 424	10,9	1 035	-40,3
Pirkanmaa	109 463	5,7	97 186	5,9	12 277	4,4
Tampere	64 927	4,7	54 135	4,2	10 792	7,6
Päijät-Häme	47 184	14,4	41 960	14,7	5 224	11,6
Lahti	13 848	4,3	10 153	6,0	3 695	0,0
Kymenlaakso	14 819	2,7	10 696	-6,3	4 123	36,7
Kouvola	7 117	-4,9	6 076	-6,6	1 041	6,4
South Karelia	29 519	3,0	15 143	-2,2	14 376	9,1
Lappeenranta	12 088	1,4	7 660	-1,0	4 428	5,7
Etelä-Savo	27 537	-2,2	23 385	2,3	4 152	-21,6
Mikkeli	10 157	-13,7	8 795	-11,4	1 362	-26,3
Pohjois-Savo	68 163	-9,2	61 410	-9,2	6 753	-9,7
Kuopio	29 008	-7,9	26 627	-7,2	2 381	-14,9
North Karelia	28 217	3,3	24 329	1,8	3 888	13,8
Joensuu	13 819	9,8	11 167	8,5	2 652	15,8
Central Finland	96 396	-10,2	84 549	-7,9	11 847	-23,8
Jyväskylä	32 824	-7,1	29 107	-7,9	3 717	-0,0
South Ostrobothnia	34 442	21,4	31 226	15,6	3 216	133,9
Seinäjoki	13 869	46,9	11 053	27,3	2 816	269,6
Ostrobothnia	22 549	15,2	17 516	9,8	5 033	39,4
Vaasa	15 374	11,6	11 464	2,9	3 910	48,7
Central Ostrobothnia	9 374	-9,5	8 690	-2,7	684	-52,2
Kokkola	7 035	1,5	6 385	10,9	650	-44,6
North Ostrobothnia	112 117	-2,7	97 234	0,2	14 883	-18,3
Oulu	41 824	-2,4	35 702	-2,0	6 122	-4,5
Kainuu	82 016	-10,5	77 516	-10,6	4 500	-7,9
Kajaani	7 943	-5,8	7 413	-6,8	530	12,8
Lapland	210 810	-2,2	103 137	-3,8	107 673	-0,6
Rovaniemi	41 521	-6,4	14 894	-3,8	26 627	-7,8
Åland	6 152	-0,6	2 967	3,1	3 185	-3,9
Maarianhamina	4 032	-11,5	2 017	-19,2	2 015	-2,2

Appendix table 3. Hotel capacity and capacity utilization, February 2011

Region / municipality	Number of establishments	Number of bedrooms	Occupancy rate of bedrooms %	Change of the occupancy rate compared to previous year, %-units	Room price, euros (Vat inc. 9 %)	¹⁾ RevPAR, euros (Vat inc. 9 %)
Whole country	616	48 724	50,5	0,6	89,28	45,08
Mainland Finland	606	48 211	50,8	0,6	89,29	45,32
Uusimaa	111	13 732	56,3	1,2	96,98	54,58
Helsinki	52	8 301	58,7	1,7	100,1	58,79
Varsinais-Suomi	36	3 012	45,2	2,4	81,64	36,92
Turku	18	1 945	47,7	1,2	83,43	39,79
Satakunta	22	1 128	39,9	-6,9	82,09	32,74
Pori	7	584	38,2	-19,0	77,65	29,66
Kanta-Häme	17	1 202	37,6	1,2	86,43	32,51
Hämeenlinna	8	714	40,0	2,9	95,11	38,06
Pirkanmaa	40	3 296	58,2	2,6	91,70	53,34
Tampere	20	2 217	64,1	1,4	92,24	59,13
Päijät-Häme	16	1 701	46,8	4,7	84,32	39,43
Lahti	7	648	48,2	3,4	87,39	42,09
Kymenlaakso	15	934	37,1	4,6	80,62	29,88
Kouvola	6	435	37,7	1,9	75,88	28,58
South Karelia	17	1 165	48,8	2,8	90,40	44,09
Lappeenranta	6	501	57,5	1,8	80,73	46,40
Etelä-Savo	27	1 403	35,4	-2,4	69,75	24,66
Mikkeli	5	455	48,5	-6,4	75,75	36,75
Pohjois-Savo	27	2 191	54,7	-2,6	84,28	46,14
Kuopio	8	940	62,1	-7,3	86,58	53,73
North Karelia	24	1 352	41,7	-1,0	81,71	34,05
Joensuu	10	749	46,1	-3,8	79,51	36,62
Central Finland	30	2 550	52,1	-5,4	96,00	50,04
Jyväskylä	10	1 231	58,7	-5,5	85,42	50,15
South Ostrobothnia	22	1 338	51,5	8,4	72,74	37,47
Seinäjoki	8	534	64,1	16,7	76,03	48,77
Ostrobothnia	23	1 306	42,8	6,7	79,57	34,08
Vaasa	10	877	45,8	7,3	83,24	38,12
Central Ostrobothnia	10	504	41,4	-1,9	72,27	29,93
Kokkola	5	360	47,7	-1,3	77,87	37,11
North Ostrobothnia	49	3 326	48,2	-2,1	82,19	39,65
Oulu	10	1 422	63,2	-1,0	85,09	53,81
Kainuu	22	1 646	52,5	-1,6	78,62	41,24
Kajaani	7	453	39,2	-0,5	73,17	28,72
Lapland	98	6 425	52,0	-0,0	89,82	46,75
Rovaniemi	12	1 239	75,0	-1,5	84,02	63,00
Åland	10	513	22,9	0,7	.	.
Maarianhamina	5	360	24,4	-7,3	.	.

1)

Appendix table 4. Nights spend in hotels, February 2011

Region / municipality	Nights spend, total	Change of nights spend, total, %	Nights spend, residents	Change of nights spend, residents, %	Nights spend, non-residents	Change of nights spend, non-residents, %
Whole country	1 153 506	1,7	844 521	1,8	308 985	1,3
Mainland Finland	1 149 224	1,7	842 288	1,8	306 936	1,4
Uusimaa	309 387	7,4	187 504	8,7	121 883	5,5
Helsinki	193 155	7,5	100 424	10,3	92 731	4,6
Varsinais-Suomi	62 200	5,7	53 236	6,2	8 964	3,1
Turku	42 008	4,2	36 190	5,9	5 818	-5,2
Satakunta	16 575	-11,1	12 448	-4,8	4 127	-26,0
Pori	8 134	-27,4	6 735	-14,4	1 399	-58,2
Kanta-Häme	21 777	0,4	20 120	3,0	1 657	-23,2
Hämeenlinna	13 865	4,8	12 830	11,6	1 035	-40,3
Pirkanmaa	89 479	8,6	78 182	9,0	11 297	5,6
Tampere	59 736	4,3	49 765	4,5	9 971	3,0
Päijät-Häme	40 768	17,4	35 984	17,7	4 784	14,9
Lahti	13 392	5,1	9 906	6,0	3 486	2,7
Kymenlaakso	12 830	1,5	9 060	-7,5	3 770	32,1
Kouvola	5 974	-5,8	5 050	-7,0	924	1,0
South Karelia	28 210	2,5	13 945	-5,2	14 265	11,3
Lappeenranta	11 767	0,9	7 423	-2,9	4 344	8,0
Etelä-Savo	22 506	4,2	19 839	6,5	2 667	-10,3
Mikkeli	9 628	-13,9	8 376	-11,2	1 252	-28,4
Pohjois-Savo	62 483	-9,2	57 172	-8,7	5 311	-15,0
Kuopio	26 727	-8,7	24 732	-7,5	1 995	-21,1
North Karelia	26 045	3,4	22 321	1,9	3 724	13,7
Joensuu	13 758	10,0	11 125	8,6	2 633	16,3
Central Finland	89 995	-9,5	78 778	-8,9	11 217	-13,9
Jyväskylä	32 432	-7,3	28 715	-8,2	3 717	-0,0
South Ostrobothnia	31 127	22,7	27 933	16,4	3 194	133,0
Seinäjoki	13 407	47,3	10 591	27,0	2 816	269,6
Ostrobothnia	21 679	17,6	16 646	10,9	5 033	47,1
Vaasa	15 374	11,6	11 464	2,9	3 910	48,7
Central Ostrobothnia	8 227	-7,7	7 623	1,0	604	-55,7
Kokkola	6 444	-5,3	5 873	3,0	571	-48,4
North Ostrobothnia	81 588	-2,5	69 340	-0,1	12 248	-13,9
Oulu	39 596	-1,0	33 856	-1,8	5 740	4,0
Kainuu	59 023	-9,8	55 955	-9,5	3 068	-15,9
Kajaani	7 833	-3,4	7 318	-4,2	515	9,6
Lapland	165 325	-1,8	76 202	-1,9	89 123	-1,7
Rovaniemi	37 706	-6,0	13 290	-4,8	24 416	-6,7
Åland	4 282	-7,2	2 233	-6,1	2 049	-8,2
Maarianhamina	3 433	-16,3	1 838	-16,6	1 595	-16,1

Appendix table 5. Visitor arrivals and nights spend by country of residence, February 2011

Country of residence	Visitor arrivals in all accommodation establishments	Nights spend in all accommodation establishments	Change of nights spend in all accommodation establishments, %	Nights spend in hotels	Change of nights spend in hotels, %
Total	682 355	1 333 656	0,7	1 153 506	1,7
Finland	537 048	987 922	0,8	844 521	1,8
Foreign countries	145 307	345 734	0,3	308 985	1,3
Sweden	15 056	23 785	10,4	22 797	10,8
Germany	12 340	35 627	-2,2	33 297	-1,4
Russia	31 973	59 667	-2,4	53 506	-0,9
United Kingdom	11 915	35 138	-10,4	27 714	-14,2
United States	3 353	8 977	16,2	8 624	15,3
Norway	4 347	8 083	6,7	7 466	9,5
Netherlands	6 487	22 596	-7,8	18 816	-0,6
Italy	2 760	7 143	-2,6	6 706	4,7
France	8 039	28 046	-8,5	25 790	-9,0
Japan	6 836	13 371	-3,4	12 935	-4,5
Estonia	5 932	17 000	-0,1	13 332	3,6
Spain	2 674	7 039	11,5	6 391	13,2

Appendix table 6. Nights spend in all establishments, 2011

Month	Nights spend, total	Change of nights spend, total, %	Nights spend, residents	Change of nights spend, residents, %	Nights spend, non-residents	Change of nights spend, non-residents, %
Total	2 618 963	3,0	1 749 376	2,5	869 587	4,0
January	1 285 307	5,4	761 454	4,7	523 853	6,6
February	1 333 656	0,7	987 922	0,8	345 734	0,3

Suomen virallinen tilasto
Finlands officiella statistik
Official Statistics of Finland

Transport and Tourism 2011

Inquiries

Marjut Tuominen (09) 1734 3556

Merja Rönkä (09) 1734 3209

Director in charge:

Hannele Orjala

liikenne.matkailu@stat.fi

www.stat.fi

Source: Accommodation Statistics 2011. Statistics Finland