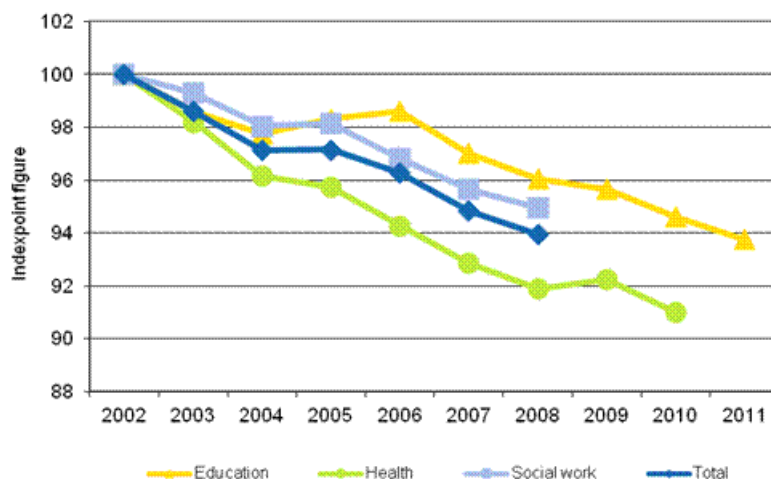


Statistics on local government productivity 2011

Productivity of local government education fell further in 2011

The productivity of educational services provided by municipalities and joint municipal authorities decreased in 2011. A falling trend in the productivity of education has prevailed since 2006. This is indicated by Statistics Finland's statistics on local government productivity. The volume of output in education fell by 1.1 per cent, and that of total input by 0.2 per cent. Consequently, total productivity of education decreased by 0.9 per cent from the previous year.

Development in the total productivity of education, health care and social work of local government in 2002–2011 (2002=100)



Data on the development of productivity in health care and social work cannot at the moment be published. For this reason, data on the total productivity of education, health care and social work together cannot be released either. The ongoing changes in the structure of services in the municipal sector are strongly reflected in the development of costs in social work. The data in the source statistics do not facilitate sufficiently detailed treatment of these changes in national accounts to allow productivity calculations. The productivity of health care in 2011 could not be calculated because data on outpatient visits comparable to the previous year were unavailable, due to changes in the collection of such data. The statistics on local

government productivity are compiled at the level of the whole country, as data are not available at the municipal or joint municipal authority level. The statistics derive directly from data on the local government sector in the national accounts data.

Contents

Tables

Appendix tables

Appendix table 1. Volume changes in the output and total input and changes in total productivity of local government by industry in 2002-2011, per cent from the year before.....4

Appendix tables

Appendix table 1. Volume changes in the output and total input and changes in total productivity of local government by industry in 2002-2011, per cent from the year before

		2002	2003	2004	2005	2006	2007	2008	2009	2010	2011
Education	Output	0.7	0.3	0.5	0.1	-0.1	-0.9	-1.5	-1.7	0.9	-1.1
	Total input	2.3	1.7	1.3	-0.4	-0.4	0.7	-0.6	-1.3	2.0	-0.2
	Total productivity	-1.6	-1.4	-0.9	0.6	0.3	-1.6	-1.0	-0.4	-1.1	-0.9
Health	Output	0.5	1.1	3.5	4.3	0.1	1.0	3.3	4.0	1.1	..
	Total input	3.5	3.0	5.7	4.8	1.7	2.6	4.3	3.7	2.0	..
	Total productivity	-2.9	-1.8	-2.1	-0.5	-1.5	-1.5	-1.0	0.4	-1.0	..
Social work	Output	1.0	0.1	0.0	1.7	1.2	0.6	3.8
	Total input	2.9	0.8	1.3	1.6	2.6	1.8	4.5
	Total productivity	-1.8	-0.7	-1.3	0.1	-1.3	-1.2	-0.7
Total	Output	0.7	0.6	1.6	2.3	0.3	0.3	1.9
	Total input	2.9	2.0	3.2	2.3	1.2	1.8	2.9
	Total productivity	-2.2	-1.4	-1.5	0.0	-0.9	-1.5	-0.9

Inquiries

Jan Klavus 09 1734 3391

Director in charge:

Leena Storgårds

julkinen.tuottavuustilasto@stat.fi

http://www.stat.fi/til/kktu/index_en.html

Source: Statistics on local government productivity 2011. Statistics Finland.