

Statistics on local government productivity 2008

15 July 2010 revised edition

Productivity of local government weakened slightly in 2008

Corrected on 15 July 2010. The corrections are in red font and they also affect the tables and the graph. Statistics describing the productivity of local government in 2008 were originally released on 5 February 2010. The source data on specialised health care received from the National Institute for Health and Welfare that were available at that time have now become revised. The revision affects the output figures for health care and total activities, as well as data on total productivity.

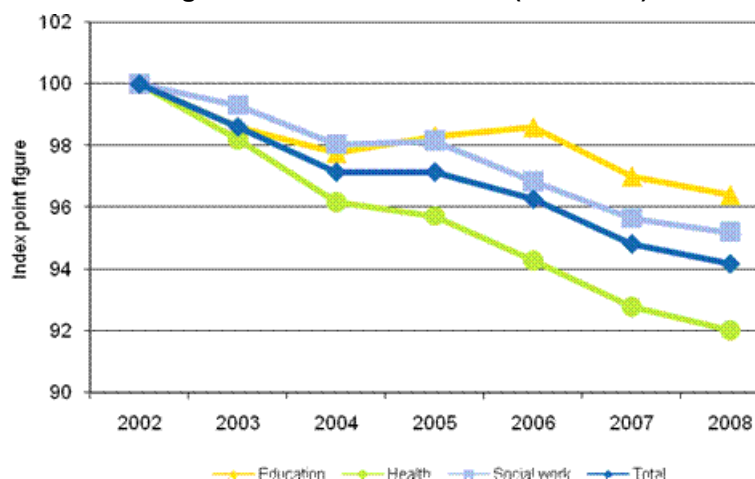
According to revised data of Statistics Finland's statistics on local government productivity, the combined total productivity of education, health care and social work of local government **fell** by **0.7** per cent in 2008. Productivity **weakened** because the volume of **total input** grew by more than the volume of **output**. The volume of **total input** grew by **2.5** per cent, while the volume of **output** grew by **1.8** per cent.

Volume changes in the output and total input and changes in total productivity of local government by industry in 2008, per cent from the year before

2008	Education	Health	Social work	Total
Output	-1.4	2.9	3.7	1.8
Total input	-0.7	3.9	4.2	2.5
Total productivity	-0.6	-0.9	-0.5	-0.7

Productivity **fell in all of the three examined activities** in 2008. In education, total input decreased by 0.7 per cent but because output diminished by more than this, productivity weakened by some 0.5 per cent. Productivity also weakened by approximately 0.5 per cent in social work, as total input grew by over four per cent but output by under four per cent. In health care **output went up by some three per cent** but total input by nearly four per cent, so productivity **fell by 0.9 per cent**.

Development in the total productivity of education, health and social work of local government in 2002–2008 (2002=100)



Between 2002 and 2008, the combined productivity of local government has fallen by **six** per cent. In education total productivity fell by four per cent, in social work by five per cent and in health care by **eight** per cent.

The entire 2001-2008 time series of these statistics on local government productivity has become slightly revised in this release due to the revision of the time series of national accounts published on 29 January 2010. The statistics are compiled at the level of the whole country and the data are not available by municipality or joint municipal board.

Contents

Tables

Appendix tables

Volume changes in the output and total input and changes in total productivity of local government by industry in 2001–2008.....4

Appendix tables

Volume changes in the output and total input and changes in total productivity of local government by industry in 2001–2008

		2001	2002	2003	2004	2005	2006	2007	2008
Education	Output	0.1	0.7	0.3	0.5	0.1	-0.1	-0.9	-1.4
	Total input	1.6	2.3	1.7	1.3	-0.4	-0.4	0.7	-0.7
	Total productivity	-1.5	-1.6	-1.4	-0.9	0.6	0.3	-1.6	-0.6
Health	Output	0.3	0.5	1.1	3.5	4.3	0.1	0.9	2.9
	Total input	3.8	3.5	3.0	5.7	4.8	1.7	2.6	3.9
	Total productivity	-3.4	-2.9	-1.8	-2.1	-0.5	-1.5	-1.6	-0.9
Social work	Output	-1.6	1.0	0.1	0.0	1.7	1.2	0.6	3.7
	Total input	3.9	2.9	0.8	1.3	1.6	2.6	1.8	4.2
	Total productivity	-5.3	-1.8	-0.7	-1.3	0.1	-1.3	-1.2	-0.5
Total	Output	-0.2	0.7	0.6	1.6	2.3	0.3	0.3	1.8
	Total input	3.1	2.9	2.0	3.2	2.3	1.2	1.8	2.5
	Total productivity	-3.2	-2.2	-1.4	-1.5	0.0	-0.9	-1.5	-0.7

Suomen virallinen tilasto
Finlands officiella statistik
Official Statistics of Finland

Government Finance 2010

Inquiries

Niina Suutarinen (09) 1734 3302
Director in charge:
Ari Tyrkkö
julkinen.tuottavuustilasto@stat.fi
http://www.stat.fi/til/kktu/index_en.html