

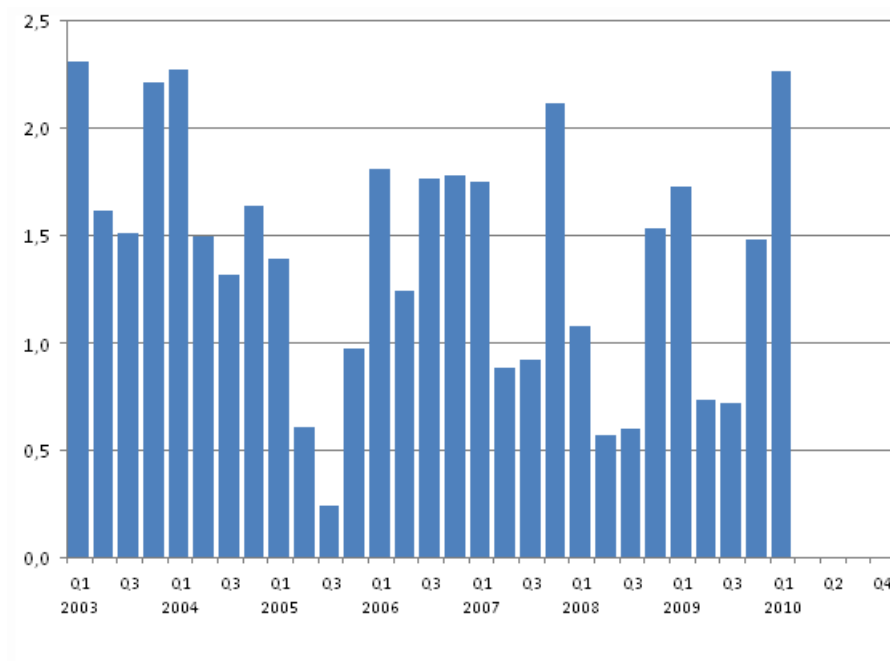
Consumption of hard coal

2010, first quarter

Consumption of hard coal increased by 31 per cent in the first quarter

A total of 2.3 million tonnes (57,000 TJ) of hard coal were consumed as fuel in the generation of electricity and heat in the January to March period of 2010. The consumption increased by 31 per cent from the previous year. Use of hard coal went up especially in separate production of electricity. The growth in the consumption was due to diminished production of hydro power from the year before.

Consumption of Hard Coal, million tonnes



In the first quarter of the year, the consumption of hard coal was a third up on the average for the 2000s. The consumption of hard coal was last this high in 2004.

The consumption of electricity increased by 7 per cent from the previous year. The consumption of electricity in industry, which was brought down by the economic downturn, began to rise again in the

latter half of 2009 and the growth continued through the January-March period. The weather was also colder than in the year before, and this put electricity consumption up. At the same time the worse than average water situation lowered the production of hydro power in Finland in the first quarter.

Contents

Appendix tables

Consumption of Hard Coal.....4
Hard Coal Stocks, month-end, million tonnes.....4

Appendix tables

Consumption of Hard Coal

Month	Year										
	2000	2001	2002	2003	2004	2005	2006	2007	2008	2009	2010
January	610	490	580	820	890	380	550	560	410	610	830
February	450	600	440	750	720	430	590	680	330	610	760
March	390	640	420	730	660	570	660	510	330	500	670
April	250	430	320	660	550	280	420	340	230	310	-
May	290	340	190	570	490	230	370	240	160	230	-
June	100	260	130	380	460	90	450	300	180	190	-
July	80	190	210	380	410	50	500	110	10	180	-
August	220	210	270	490	480	90	580	300	200	240	-
September	270	230	450	650	430	90	680	500	380	300	-
October	380	330	760	700	530	210	660	640	440	360	-
November	400	420	770	700	630	300	660	750	530	470	-
December	470	570	800	800	480	460	450	720	570	650	-
1st Quarter	1 450	1 730	1 440	2 300	2 270	1 390	1 810	1 750	1 080	1 720	2 260
Whole year	3 910	4 710	5 360	7 640	6 720	3 200	6 590	5 660	3 780	4 650	-

Hard Coal Stocks, month-end, million tonnes

Month	Year				
	2006	2007	2008	2009	2010
January	5,0	4,4	3,6	4,2	4,3
February	4,6	4,1	3,6	4,1	3,8
March	4,1	4,2	3,7	4,0	3,4
April	3,9	4,4	3,7	4,2	-
May	3,8	4,8	3,9	4,5	-
June	3,7	4,8	4,0	4,9	-
July	3,4	4,9	4,1	5,2	-
August	3,2	5,0	4,3	5,5	-
September	3,3	4,7	4,1	5,5	-
October	3,5	4,5	3,9	5,4	-
November	3,8	4,1	4,1	5,2	-
December	4,4	3,7	4,4	4,8	-

Inquiries

Anssi Vuorio 09 1734 2685
Director in charge:
Leena Storgårds
energia@stat.fi
www.stat.fi