

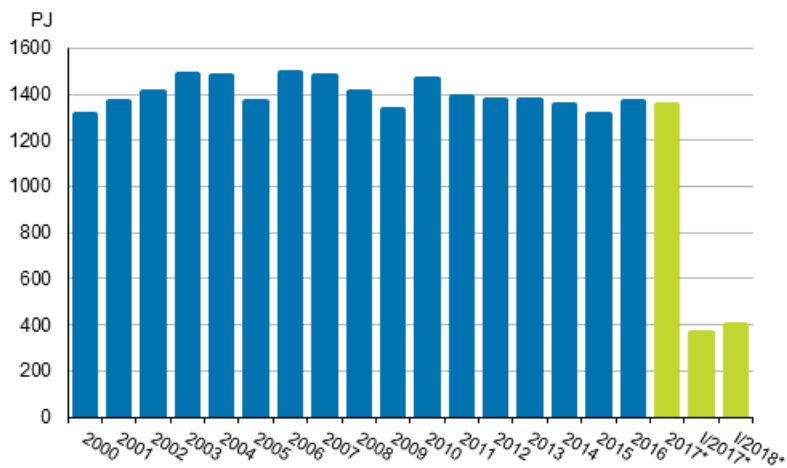
Energy supply and consumption

2018, 1st quarter

Total energy consumption rose by 9 per cent in January to March

According to Statistics Finland's preliminary data, total energy consumption in January to March amounted to 404 petajoule (PJ), which was nine per cent more than in the corresponding period in 2017. Electricity consumption amounted to 26 terawatt hours (TWh), which was seven per cent more than one year earlier. Carbon dioxide emissions of the energy sector rose by 18 per cent year-on-year.

Total energy consumption



*preliminary

The cold weather in the early part of the year increased particularly the consumption of fossil fuels. The consumption of peat went up by as much as 47 per cent. However, wood fuels remained the most significant fuel with their 25 per cent share in total energy consumption.

The volume of electricity produced with hydro power was 30 per cent higher than in January to March 2017. Net imports of electricity fell by three per cent and accounted for 20 per cent of total electricity consumption. Electricity produced with nuclear energy increased by 10 per cent and its share of all domestic electricity production stood at seven per cent. The production of solar power almost quadrupled, but its share of electricity production was still extremely small.

In January to March, diverse energy products were imported into Finland to the value of EUR 2.7 billion, which was 16 per cent more than one year earlier. Most energy products were imported from Russia, whose share of the value of imports was 63 per cent. Energy products were exported to the value of EUR 1.3 billion, which was 19 per cent more than one year previously. Most energy products were exported from Finland to EU countries, which accounted for 77 per cent of the value of exports.

Stocks of coal amounted to 10.7 TWh at the end of March, which was 26 per cent less than one year earlier. At the end of March, it was estimated that the peat stocks contained 1.3 TWh of energy peat, or 88 per cent less than one year earlier.

Total energy consumption by source (TJ) and CO2 emissions (Mt)

Energy source	I/2018*	Annual change-%*	Percentage share of total energy consumption*
Oil ¹⁾	80,398	7	20
Coal ²⁾	38,259	8	10
Natural gas ³⁾	30,107	16	7
Nuclear energy ⁴⁾	65,501	1	16
Net imports of electricity ⁵⁾	18,605	-3	5
Hydro power ⁵⁾	15,091	30	4
Wind power ⁵⁾	5,223	10	1
Peat	29,916	47	7
Wood fuels	99,881	5	25
Others ⁶⁾	21,356	25	5
TOTAL ENERGY CONSUMPTION	404,337	9	100
Bunkers	11,254	11	.
CO2 emissions from energy sector	14	18	.

* = Preliminary data

. = Category not applicable

1) Oil: includes the bio part of transport fuels.

2) Coal: includes hard coal, coke, blast furnace gas and coke oven gas.

3) The consumption of natural gas does not include raw material use.

4) Conversion of electricity generation into fuel units: Nuclear power: 10.91 TJ/GWh (33% total efficiency)

5) Conversion of electricity generation into fuel units: Hydro power, wind power and net imports of electricity: 3.6 TJ/GWh (100%)

6) Others: includes exothermic heat from industry, recovered fuels, heat pumps, hydrogen, biogas, other bioenergy and solar energy.

Contents

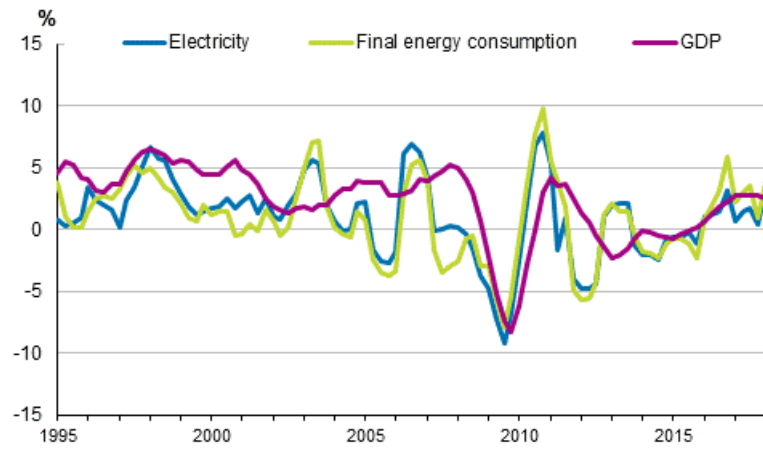
Figures

Appendix figures

Appendix figure 1. Changes in GDP, Final energy consumption and electricity consumption.....	4
Appendix figure 2. Carbon dioxide emissions from fossil fuels and peat use	4
Appendix figure 3. Coal consumption	5
Appendix figure 4. Natural gas consumption.....	5
Appendix figure 5. Energy peat consumption.....	5
Appendix figure 6. Domestic oil deliveries.....	6
Revisions in these statistics.....	7

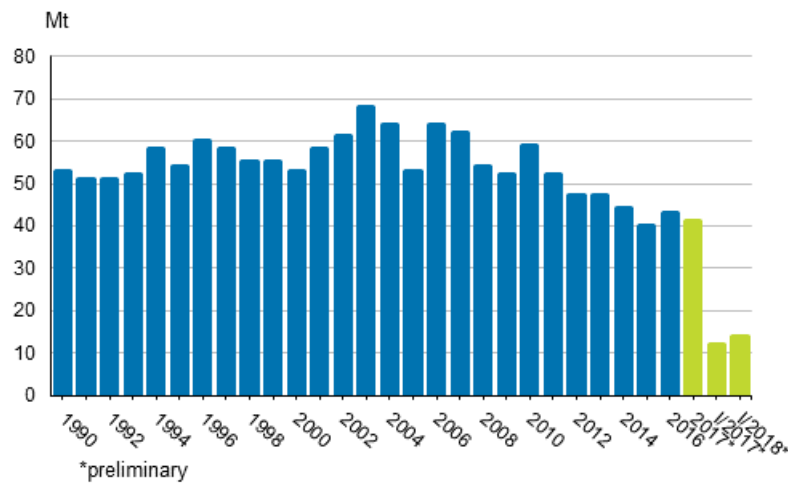
Appendix figures

Appendix figure 1. Changes in GDP, Final energy consumption and electricity consumption



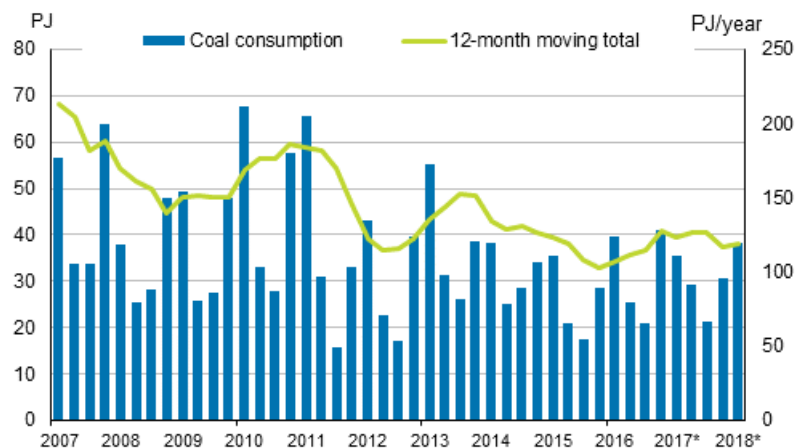
*preliminary, 12-month moving total

Appendix figure 2. Carbon dioxide emissions from fossil fuels and peat use



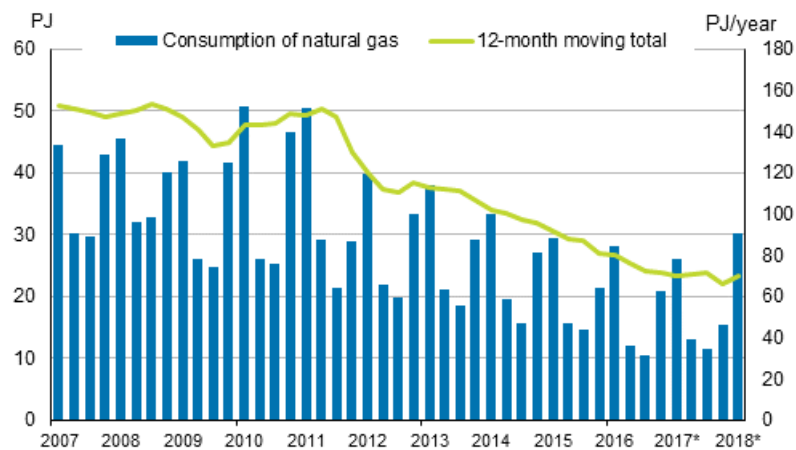
*preliminary

Appendix figure 3. Coal consumption



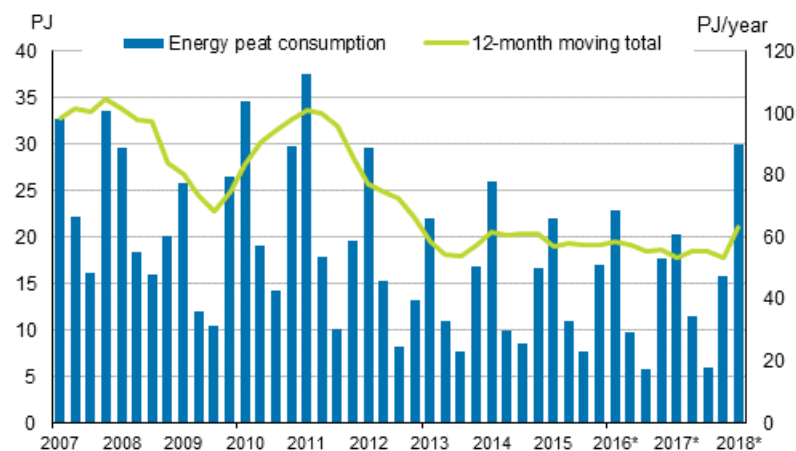
*preliminary

Appendix figure 4. Natural gas consumption



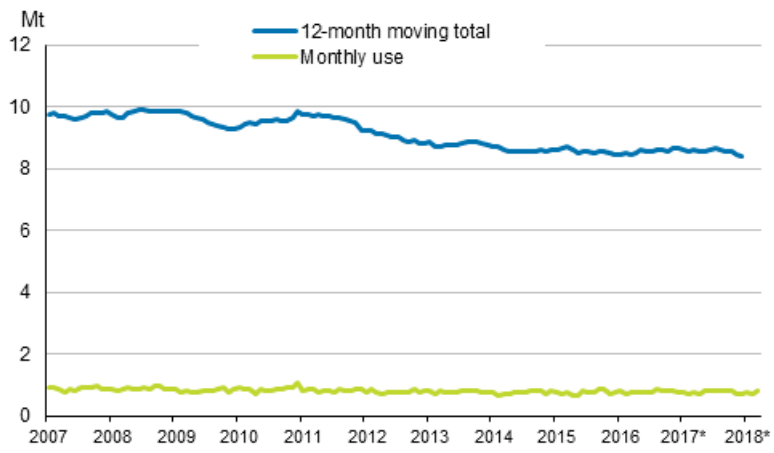
Source: Gasum, * preliminary

Appendix figure 5. Energy peat consumption



Source: The Bioenergy Association of Finland/Association of Finnish Peat Industries, *preliminary

Appendix figure 6. Domestic oil deliveries



Source: Finnish Petroleum and Biofuels Association, *preliminary

Revisions in these statistics

The data of the statistics have become revised according to the table below. For more information about data revisions, see Section 3 of the quality description (only in Finnish).

Revisions to data on annual changes in total energy consumption¹⁾

Total energy consumption and quarter	Annual change (%)		Revision (%-point)
	1st release (%)	Latest release 27th June 2018 (%)	
I-IV 2017	-1	-1	0
I/2017	-4	-6	-2
II/2017	5	4	-1
III/2017	5	4	-1
IV/2017	-3	-4	-1
I/2018	.	9	.

. = Category not applicable

1) The revisions describe the difference between the annual change percentages of the latest and first releases in percentages. The first release refers to the time when preliminary data for the statistical reference quarter in question were released for the first time.

Inquiries

Ville Maljanen 029 551 2691
Director in charge:
Ville Vertanen

energia@stat.fi
www.stat.fi

Source: Statistics Finland, Energy supply and consumption