

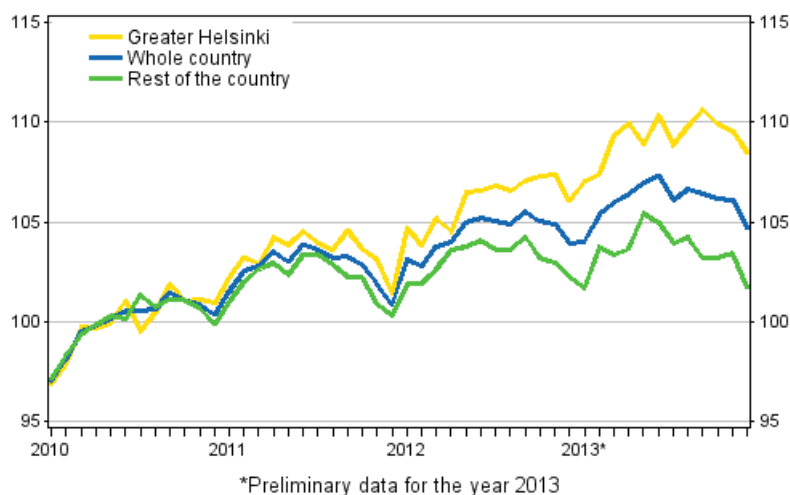
Prices of dwellings in housing companies

2013, December and 4th quarter

Prices of dwellings in housing companies fell in December

According to Statistics Finland's preliminary data, prices of dwellings in old blocks of flats and terraced houses went down by 1.3 per cent in the whole country from November to December. Prices went down by 1.0 per cent in Greater Helsinki and by 1.6 per cent in the rest of Finland. Compared with the corresponding period of the previous year, prices rose by 0.7 per cent in the whole country. In Greater Helsinki, prices went up by 2.3 per cent from the year before, but in the rest of Finland they went down by 0.5 per cent.

Development of prices of old dwellings in housing companies by month, index 2010=100



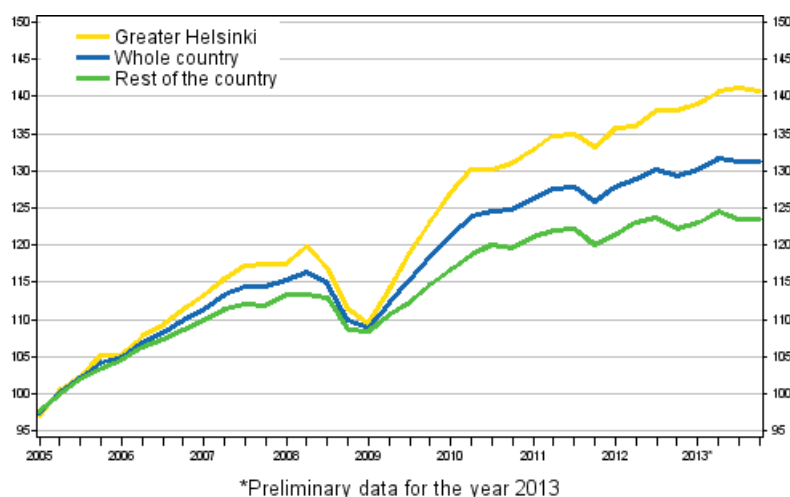
In December 2013, the average price per square metre of an old dwelling in a housing company was EUR 2,177 in the whole country, EUR 3,551 in Greater Helsinki and EUR 1,638 elsewhere in the country.

When the monthly statistics on prices of dwellings in housing companies are published they cover approximately 40 per cent of all transactions made in the latest statistical month. The monthly data become revised during the following months so that the final data for the year are published in the release concerning the first quarter of the following year. For further information about data revisions, see a separate tables.

Prices of dwellings in housing companies in the fourth quarter

In the fourth quarter of 2013, prices of old dwellings fell in the whole country by 0.1 per cent from the previous quarter. In Greater Helsinki, prices went down by 0.3 per cent, while in the rest of Finland they went up by 0.1 per cent. Compared with the corresponding period of the previous year, prices rose by 1.4 per cent in the whole country. Prices went up by 1.9 per cent in Greater Helsinki and by 1.1 per cent elsewhere in Finland.

Development of prices of old dwellings in housing companies, index 2005=100



In October-December, the average price per square metre of an old dwelling in a housing company was EUR 2,261 in the whole country, EUR 3,549 in Greater Helsinki and EUR 1,680 elsewhere in the country.

Compared with the previous quarter, prices of dwellings in new blocks of flats and terraced houses fell by 1.5 per cent in the whole country. Prices went down by 2.6 per cent in Greater Helsinki and by 0.9 per cent in the rest of Finland.

Compared with the same period in 2012, prices of new units in housing companies fell by 0.7 per cent in the whole country. In Greater Helsinki, prices went down by 3.4 per cent, while in the rest of Finland they went up by 0.8 per cent. The average price per square metre of new units in housing companies was EUR 3,385 in the whole country, EUR 4,607 in Greater Helsinki and EUR 2,946 in the rest of the country.

According to preliminary data, prices of old dwellings in blocks of flats and terraced houses went up by 1.6 per cent from the previous year in the whole of 2013. In Greater Helsinki, prices went up by 2.5 per cent and in the rest of the country by 0.8 per cent. In 2013, the average price per square metre was EUR 2,259 in the whole country, EUR 3,527 in Greater Helsinki and EUR 1,688 elsewhere in Finland. Final data on the prices of old dwellings in housing companies in 2013 will be published on 28 April 2014.

In 2013, prices of new dwellings in blocks of flats and terraced houses rose by 1.8 per cent. In Greater Helsinki, prices went up by 1.7 per cent and in the rest of the country by 1.8 per cent compared with the previous year. In the whole country, the average price of a new dwelling was EUR 3,395, in Greater Helsinki EUR 4,601 and elsewhere in Finland EUR 2,962.

The results of the monthly and quarterly statistics show deviations because the monthly statistics are produced by a less detailed regional division and have a different weight structure than the quarterly statistics. The base year of the quarterly index is 2005.

Contents

1. Prices of dwellings in blocks of flats nearly unchanged in the October to December	4
2. Prices of old dwellings in terraced houses fell in the October to December period.....	5
3. Changes in prices of dwellings and in earnings level.....	6

Tables

Appendix tables

Appendix table 1. Unencumbered average prices per square metre of old dwellings in housing companies, December 2013.....	7
Appendix table 2. Unencumbered average prices per square metre of blocks of flats, December 2013.....	7
Appendix table 3. Unencumbered average prices per square metre of terraced houses, December 2013.....	8
Appendix table 4. Unencumbered average prices per square metre of old dwellings in housing companies, November 2013.....	8
Appendix table 5. Unencumbered average prices per square metre of old dwellings in housing companies, October 2013.....	9

Figures

Figure 1. Quarter-on-quarter changes in prices of dwellings in old blocks of flats.....	4
Figure 2. Quarter-on-quarter changes in prices of dwellings in old terraced houses.....	5
Figure 3. Year-on-year changes in prices of dwellings and in wages and salaries 1971–2013, 4th quarter*.....	6

Appendix Figures

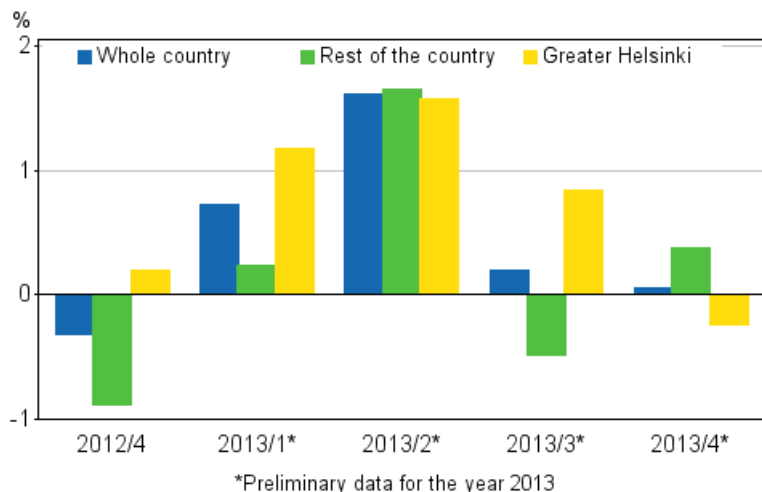
Appendix figure 1. Average prices per square meter of dwellings in old blocks of flats	10
Appendix figure 2. Average prices per square meter of dwellings in old terraced houses.....	10
Appendix figure 3. Price development of old and new dwellings from 2005.....	10
Appendix figure 4. Changes in prices of dwellings in major cities, 4th quarter 2013*.....	11
Appendix figure 5. Real Price Index of dwellings in old blocks of flats 1970=100*.....	11

Revisions in these statistics.....	12
Quality Description: Prices of dwellings in housing companies.....	14

1. Prices of dwellings in blocks of flats nearly unchanged in the October to December

According to preliminary data, the prices of old dwellings in blocks of flats rose by 0.1 per cent in the whole country compared to the previous quarter. In Greater Helsinki, prices went down by 0.2 per cent, while in the rest of Finland they went up by 0.4 per cent. Compared with the corresponding quarter of 2012, prices rose by 2.6 per cent in the whole country. In Greater Helsinki, prices went up by 3.4 per cent and in the rest of the country by 1.8 per cent.

Figure 1. Quarter-on-quarter changes in prices of dwellings in old blocks of flats



Viewed by type of apartment, prices of one-room flats increased by most from the previous quarter in Greater Helsinki. In Greater Helsinki, prices of one-room flats went up by 1.2 per cent, while in the rest of Finland they went down by 1.4 per cent. Over the same period, prices of two-room flats rose by 0.4 per cent in Greater Helsinki and by 0.7 per cent in the rest of the country. Prices of three-room and larger flats went down by 0.9 per cent in Greater Helsinki, but rose by 0.4 per cent in the rest of Finland.

In the fourth quarter of 2013, the average price per square metre of an old dwelling in a block of flats was EUR 2,406 in the whole country, EUR 3,709 in Greater Helsinki and EUR 1,684 elsewhere in the country.

Prices of new dwellings in blocks of flats fell by 2.5 per cent in the whole country from the previous quarter. Prices went down by 3.3 per cent in Greater Helsinki and by 1.9 per cent in the rest of Finland. Examined by major region, prices fell by most in Eastern Finland, by 1.8 per cent. Prices rose by 3.2 per cent in Southern Finland. Compared with the corresponding period of 2012, prices of new dwellings in blocks of flats went down by 2.9 per cent in the whole country. Prices went down by 5.2 per cent in Greater Helsinki and by 1.2 per cent in the rest of Finland. Examined by major region, prices rose by most in Northern Finland, by 7.4 per cent. Prices fell by most in Western Finland, by 2.1 per cent.

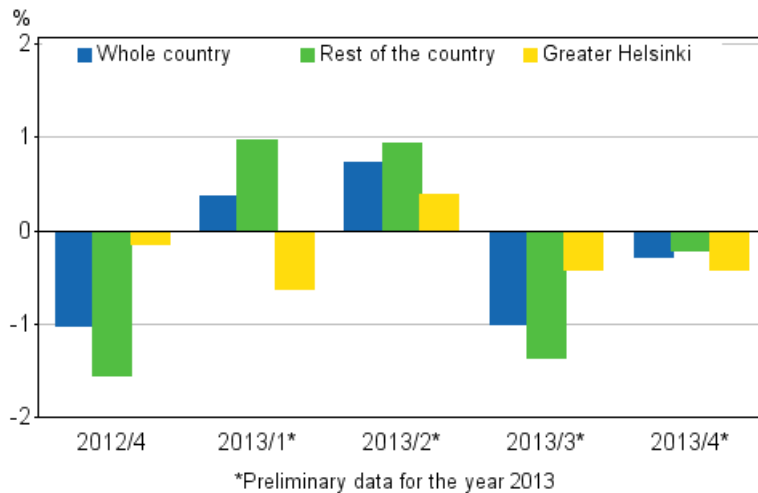
In the fourth quarter of 2013, the average price per square metre of a new dwelling in a block of flats was EUR 3,790 in the whole country, EUR 5,000 in Greater Helsinki and EUR 3,226 elsewhere in Finland.

According to preliminary data, prices of dwellings in old blocks of flats went up in 2013 by an average of 2.7 per cent in the whole country from the previous year. In Greater Helsinki, the rise amounted to 3.9 per cent and in the rest of the country to 1.4 per cent. In Greater Helsinki, the price per square metre of an old dwelling in a block of flats was EUR 3,664 and in the rest of Finland EUR 1,677. In 2013, the price per square metre of a new dwelling in a block of flats was EUR 4,973 in Greater Helsinki and EUR 3,248 elsewhere in the country. Compared with the previous year, prices of dwellings in new blocks of flats rose in the whole country by 1.9 per cent. In Greater Helsinki, prices went up by 2.4 per cent and in the rest of the country by 1.5 per cent.

2. Prices of old dwellings in terraced houses fell in the October to December period

According to preliminary data, prices of old dwellings in terraced houses fell by an average of 0.3 per cent from the previous quarter in the whole country. Prices went down by 0.4 per cent in Greater Helsinki and by 0.2 per cent in the rest of Finland. Compared with the corresponding period of 2012, prices of old dwellings in terraced houses went down by 0.2 per cent in the whole country. In Greater Helsinki, prices went down by 1.1 per cent, while in the rest of Finland they went up by 0.3 per cent.

Figure 2. Quarter-on-quarter changes in prices of dwellings in old terraced houses



In the last quarter of 2013, the average price per square metre of an old dwelling in a terraced house was EUR 2,064 in the whole country, EUR 3,237 in Greater Helsinki and EUR 1,675 elsewhere in the country.

Prices of new dwellings in terraced houses rose by 0.2 per cent from the previous quarter in the whole country. In Greater Helsinki, prices fell by 0.7 per cent while in the rest of Finland they went up 0.5 per cent. Prices fell most in Northern Finland, by 10.1 per cent. Prices rose in Western Finland by 4.5 per cent and in Southern Finland by 2.2 per cent. Compared with the corresponding period of 2012, prices of new dwellings in terraced houses rose by an average of 2.9 per cent in the whole country. Prices went up by 1.4 per cent in Greater Helsinki and by 3.4 per cent elsewhere in Finland.

In the last quarter of 2013, the average price per square metre for a new dwelling in a terraced house was EUR 2,858 in the whole country, EUR 3,773 in Greater Helsinki and EUR 2,636 elsewhere in Finland.

According to preliminary data, the prices of old dwellings in terraced houses remained unchanged in the whole country in 2013 compared with the previous year. In Greater Helsinki, prices fell by 0.3 per cent and in the rest of Finland they rose by 0.2 per cent. In Greater Helsinki, the price per square metre of an old dwelling in a terraced house was EUR 3,259 and in the rest of Finland EUR 1,701. Prices of dwellings in new terraced houses rose in the whole country by 1.6 per cent. In Greater Helsinki, prices remained unchanged and in the rest of the country they rose by 2.2 per cent. The average price per square metre of a new dwelling in a terraced house was EUR 3,811 in Greater Helsinki and EUR 2,646 elsewhere in Finland.

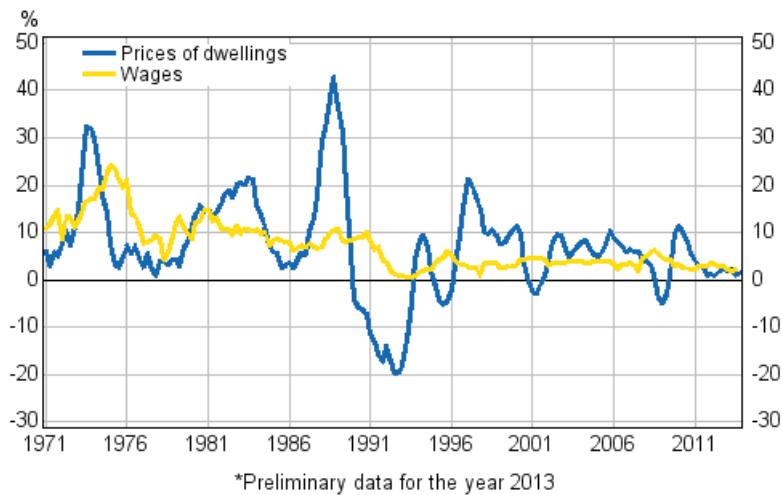
These data derive from the statistics on the prices of dwellings compiled by Statistics Finland from the Tax Administration's data. The preliminary data cover roughly two-thirds of completed transactions in old dwellings in blocks of flats and terraced houses. The data on new dwellings in blocks of flats are based on information on the transaction prices of the largest building contractors and estate agents.

3. Changes in prices of dwellings and in earnings level

The price development of dwellings has varied much within the last 40 years or so. During the overheating of the housing market, prices rose by over 40 per cent in the last quarter of 1988 compared with the previous year. Correspondingly, during the recession of the early 1990s, prices of dwellings fell by as much as 20 per cent from the year before. From 1996 dwelling prices rose up to the middle of the year 2008, with the exception of the year 2001. The outbreak of the international financial crisis in autumn 2008 slowed down the housing market and prices fell by five per cent from the third quarter of 2008 until the first quarter of 2009. From the middle of 2009 onwards, prices of dwellings have continued to grow again. The rise in dwelling prices has clearly slowed down from year 2011.

Over the same time period changes in wages and salaries have been more moderate than changes on the housing market, except for the mid-1970s, when the earnings level rose by over 20 per cent per year due to the great inflation. Over the 2000s wages and salaries have gone up yearly by an average of four per cent. The average annual rise in prices of dwellings has been one percentage point faster, which has undermined the purchasing power of wages and salaries on the housing markets.

Figure 3. Year-on-year changes in prices of dwellings and in wages and salaries 1971–2013, 4th quarter*



Appendix tables

Appendix table 1. Unencumbered average prices per square metre of old dwellings in housing companies, December 2013¹⁾

Area	Price, euro/m ²	Index (2010=100)	Monthly change, %	Yearly change, %	Number
Whole Country	2 177	104,7	-1,3	0,7	2 024
Greater Helsinki	3 551	108,5	-1,0	2,3	335
Rest of the Country (Whole country - Greater Helsinki)	1 638	101,7	-1,6	-0,5	1 689
Satellite municipalities ²⁾	2 251	102,9	-1,3	-1,1	109
Southern Finland	2 609	106,1	-1,1	1,0	1 109
Western Finland	1 603	102,7	-2,0	1,1	493
Eastern Finland	1 498	103,0	0,0	0,6	250
Northern Finland	1 508	96,7	-3,2	-3,9	172
Helsinki	4 049	111,4	-0,5	3,4	174
Espoo-Kauniainen	3 234	106,1	0,2	1,2	78
Vantaa	2 497	100,9	-4,7	-0,4	83
Tampere	2 170	103,9	-1,7	0,8	112
Turku	2 107	105,2	-1,9	-0,6	110
Oulu	1 767	96,4	-4,3	-4,2	65

1) Preliminary data

2) Satellite municipalities = Hyvinkää, Järvenpää, Kerava, Kirkkonummi, Nurmijärvi, Riihimäki, Sipoo, Tuusula and Vihti

Appendix table 2. Unencumbered average prices per square metre of blocks of flats, December 2013¹⁾

Area	Price, euro/m ²	Index (2010=100)	Monthly change, %	Yearly change, %
Whole Country	2 317	106,9	-1,7	2,1
Greater Helsinki	3 670	110,4	-2,2	3,0
Rest of the Country (Whole country - Greater Helsinki)	1 655	103,3	-1,1	1,1
Satellite municipalities ²⁾	2 072	103,9	-0,9	1,4
Southern Finland	2 721	108,2	-1,9	2,1
Western Finland	1 619	104,0	-2,7	3,0
Eastern Finland	1 691	107,0	5,0	3,8
Northern Finland	1 695	96,9	-2,3	-3,0
Helsinki	4 169	113,3	-0,6	4,0
Espoo-Kauniainen	3 017	104,4	-6,4	-1,9
Vantaa	2 348	101,6	-6,1	3,9
Tampere	2 123	105,6	-1,9	3,3
Turku	2 076	106,4	-2,0	1,8
Oulu	1 869	96,5	-4,3	-5,5

1) Preliminary data

2) Satellite municipalities = Hyvinkää, Järvenpää, Kerava, Kirkkonummi, Nurmijärvi, Riihimäki, Sipoo, Tuusula and Vihti

Appendix table 3. Unencumbered average prices per square metre of terraced houses, December 2013¹⁾

Area	Price, euro/m ²	Index (2010=100)	Monthly change, %	Yearly change, %
Whole Country	1 961	101,1	-0,7	-1,6
Greater Helsinki	3 261	103,6	2,3	0,4
Rest of the Country (Whole country - Greater Helsinki)	1 616	99,8	-2,3	-2,6
Satellite municipalities ²⁾	2 408	102,1	-1,7	-2,9
Southern Finland	2 406	102,0	0,4	-1,0
Western Finland	1 581	101,1	-1,0	-1,5
Eastern Finland	1 241	97,5	-6,7	-3,7
Northern Finland	1 320	96,6	-4,1	-4,9
Helsinki
Espoo-Kauniainen
Vantaa
Tampere	2 287	99,7	-1,2	-5,0
Turku
Oulu

1) Preliminary data

2) Satellite municipalities = Hyvinkää, Järvenpää, Kerava, Kirkkonummi, Nurmijärvi, Riihimäki, Sipoo, Tuusula and Vihti

Appendix table 4. Unencumbered average prices per square metre of old dwellings in housing companies, November 2013¹⁾

Area	Price, euro/m ²	Index (2010=100)	Monthly change, %	Yearly change, %	Number
Whole Country	2 208	106,1	-0,0	1,1	4 208
Greater Helsinki	3 570	109,6	-0,3	2,0	968
Rest of the Country (Whole country - Greater Helsinki)	1 673	103,4	0,2	0,4	3 240
Satellite municipalities ²⁾	2 232	104,3	2,0	1,0	268
Southern Finland	2 623	107,3	0,1	1,4	2 321
Western Finland	1 741	104,8	0,3	0,9	1 064
Eastern Finland	1 409	102,9	-1,7	-0,7	438
Northern Finland	1 476	99,9	-0,2	1,1	385
Helsinki	4 001	112,0	-0,2	3,2	592
Espoo-Kauniainen	3 287	105,9	-1,4	-0,2	209
Vantaa	2 668	105,9	1,1	1,0	167
Tampere	2 280	105,7	0,9	0,8	267
Turku	1 963	107,2	-2,0	3,3	244
Oulu	1 738	100,7	0,8	7,1	184

1) Updated preliminary data

2) Satellite municipalities = Hyvinkää, Järvenpää, Kerava, Kirkkonummi, Nurmijärvi, Riihimäki, Sipoo, Tuusula and Vihti

Appendix table 5. Unencumbered average prices per square metre of old dwellings in housing companies, October 2013¹⁾

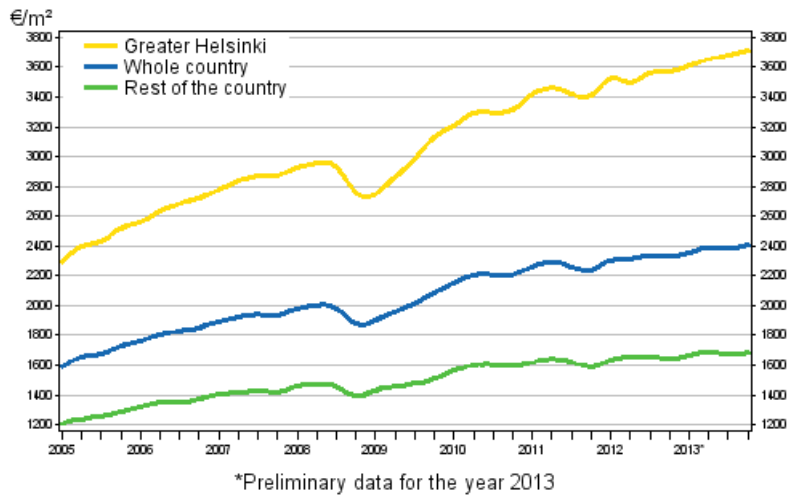
Area	Price, euro/m ²	Index (2010=100)	Monthly change, %	Yearly change, %	Number
Whole Country	2 203	106,1	-0,3	1,1	5 192
Greater Helsinki	3 571	109,9	-0,7	2,4	1 395
Rest of the Country (Whole country - Greater Helsinki)	1 667	103,2	0,0	0,0	3 797
Satellite municipalities ²⁾	2 179	102,2	-0,8	-1,3	307
Southern Finland	2 613	107,2	-0,3	1,3	2 999
Western Finland	1 698	104,5	-1,6	0,8	1 208
Eastern Finland	1 538	104,7	1,8	0,9	479
Northern Finland	1 476	100,2	2,1	-0,2	506
Helsinki	4 025	112,2	-1,6	3,4	827
Espoo-Kauniainen	3 266	107,3	1,6	1,3	311
Vantaa	2 631	104,8	-0,4	0,1	257
Tampere	2 182	104,7	-3,4	-1,2	348
Turku	1 967	109,5	4,8	3,6	238
Oulu	1 725	99,9	-0,7	3,2	223

1) Updated preliminary data

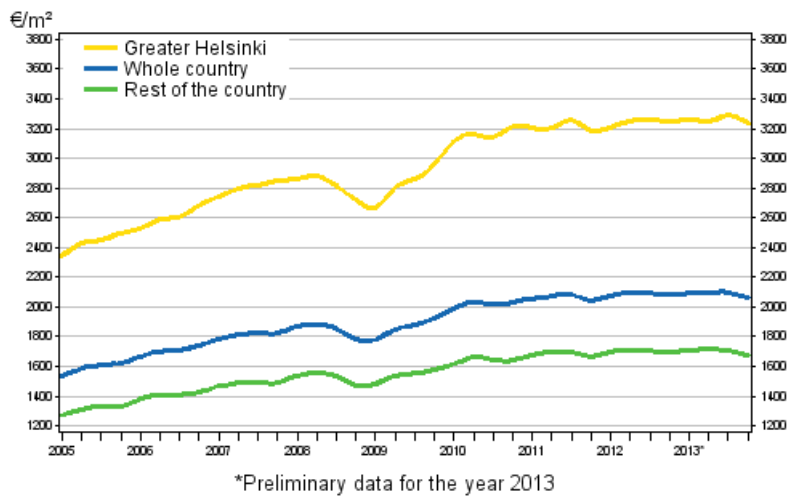
2) Satellite municipalities = Hyvinkää, Järvenpää, Kerava, Kirkkonummi, Nurmijärvi, Riihimäki, Sipoo, Tuusula and Vihti

Appendix Figures

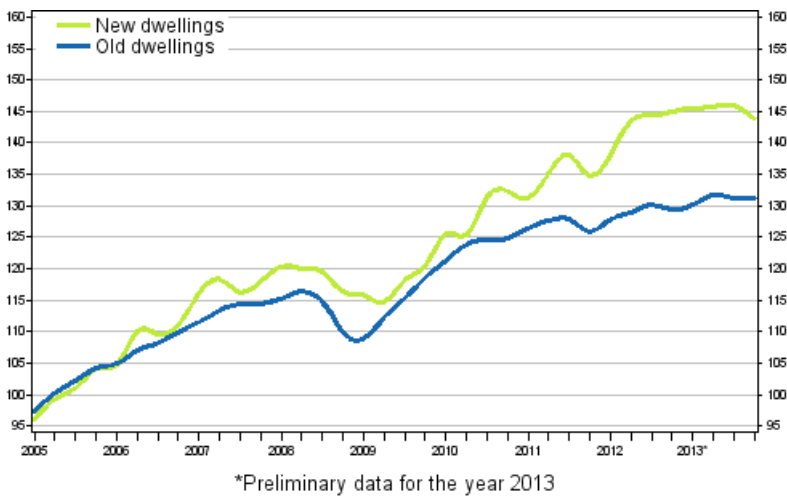
Appendix figure 1. Average prices per square meter of dwellings in old blocks of flats



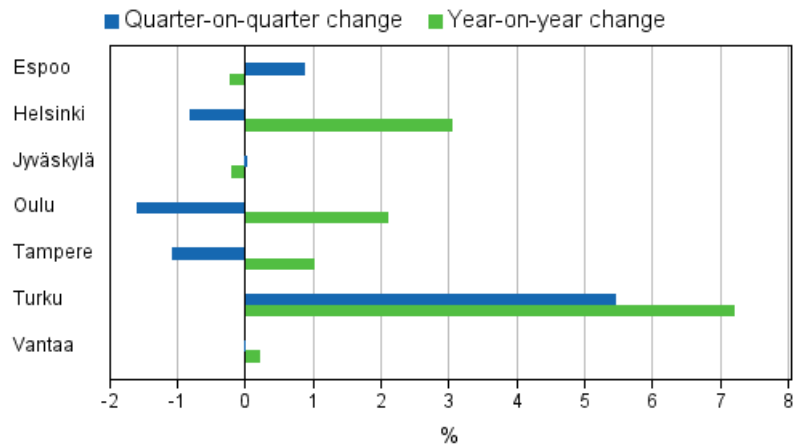
Appendix figure 2. Average prices per square meter of dwellings in old terraced houses



Appendix figure 3. Price development of old and new dwellings from 2005

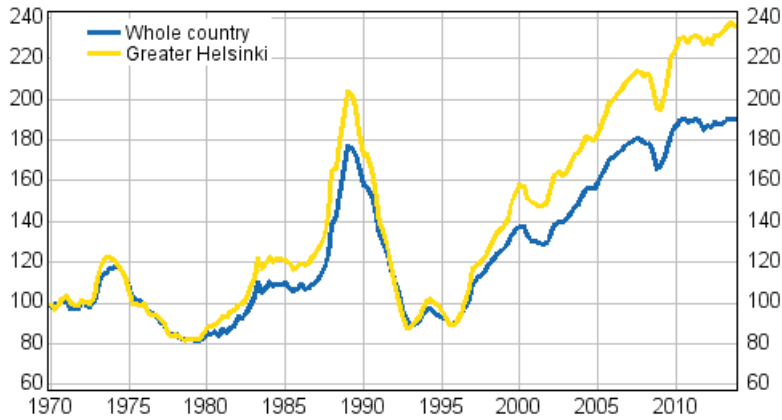


Appendix figure 4. Changes in prices of dwellings in major cities, 4th quarter 2013*



*Preliminary data for the year 2013

Appendix figure 5. Real Price Index of dwellings in old blocks of flats 1970=100*



*Preliminary data for the year 2013

Revisions in these statistics

The data of the statistics have become revised according to the table below. For more information about data revisions, see Section 3 of the quality description.

Revisions to data on monthly changes in prices of dwellings in housing companies, monthly statistics¹⁾

Area and reference timeen		Monthly change, %		Revision, percentage point
		Latest release 28.1.2014	1st release	
Whole country	08/2013	0,5	-0,1	0,6
	09/2013	-0,2	-0,4	0,2
	10/2013	-0,3	-0,4	0,1
	11/2013	0,0	0,0	0,0
Greater Helsinki	08/2013	0,9	0,2	0,7
	09/2013	0,8	0,2	0,6
	10/2013	-0,7	-1,2	0,5
	11/2013	-0,3	-0,4	0,1
Rest of the country	08/2013	0,3	-0,4	0,7
	09/2013	-1,0	-0,8	-0,2
	10/2013	0,0	0,3	-0,3
	11/2013	0,2	0,3	-0,1

1) The 1st release refers to the time when data for the reference period were released for the first time. The revision describes the difference of monthly change percentages between the latest and first release.

Revisions to data on annual changes in prices of dwellings in housing companies, monthly statistics¹⁾

Area and reference time		Annual changes, %		Revision, percentage point
		Latest release 28.1.2014	1st release	
Whole country	08/2013	1,7	0,8	0,9
	09/2013	0,9	0,6	0,3
	10/2013	1,1	0,9	0,2
	11/2013	1,1	1,0	0,1
Greater Helsinki	08/2013	3,0	2,5	0,5
	09/2013	3,3	2,9	0,4
	10/2013	2,4	1,9	0,5
	11/2013	2,0	1,9	0,1
Rest of the country	08/2013	0,6	-0,4	1,0
	09/2013	-1,1	-1,2	0,1
	10/2013	0,0	0,1	-0,1
	11/2013	0,4	0,3	0,1

1) The 1st release refers to the time when data for the reference period were released for the first time. The revision describes the difference of yearly change percentages between the latest and first release.

Revisions to data on quarterly changes in prices of dwellings in housing companies, quarterly statistics¹⁾

Area and referencetime		Quarterly change, %		Revision, percentage point
		Latest release 28.1.2014	1st release	
Whole country	4/2012	-0,6	-0,4	-0,2
	1/2013	0,6	0,7	-0,1
	2/2013	1,2	1,0	0,2
	3/2013	-0,3	-0,2	-0,1
Greater Helsinki	4/2012	0,1	0,3	-0,2
	1/2013	0,6	0,9	-0,3
	2/2013	1,2	0,6	0,6
	3/2013	0,4	0,6	-0,2
Rest of the country	4/2012	-1,2	-1,0	-0,2
	1/2013	0,6	0,5	0,1
	2/2013	1,3	1,3	0,0
	3/2013	-0,9	-0,9	0,0

1) The 1st release refers to the time when data for the reference period were released for the first time. The revision describes the difference of quarterly change percentages between the latest and first release.

Revisions to data on yearly changes in prices of dwellings in housing companies, quarterly statistics¹⁾

Area and referencetime		Annual change, %		Revision, percentage point
		Latest release 28.1.2014	1st release	
Whole country	4/2012	2,7	3,0	-0,3
	1/2013	1,8	1,9	-0,1
	2/2013	2,2	2,1	0,1
	3/2013	0,9	1,1	-0,2
Greater Helsinki	4/2012	3,8	4,1	-0,3
	1/2013	2,4	2,7	-0,3
	2/2013	3,4	3,1	0,3
	3/2013	2,2	2,5	-0,3
Rest of the country	4/2012	1,8	2,1	-0,3
	1/2013	1,3	1,3	0,0
	2/2013	1,1	1,2	-0,1
	3/2013	-0,2	-0,1	-0,1

1) The 1st release refers to the time when data for the reference period were released for the first time. The revision describes the difference of yearly change percentages between the latest and first release.

Quality Description: Prices of dwellings in housing companies

1. Relevance

1.1 Information content and purpose of use

The statistics on prices of dwellings in housing companies describe the unencumbered prices per square metre of old dwellings in housing companies, and monthly, quarterly and annual changes in them. For new dwellings data will be published quarterly and annually. The statistics contain data classified by area and type of building for the examined month and for a longer time period. The purpose of the statistics is to provide information about price development on the housing market.

1.2. Concepts, classifications and data

The data and the data suppliers:

Old dwellings: The data of the statistics on dwelling prices are based on the price information gathered by the Finnish Tax Administration for asset transfer tax calculation purposes. Additionally, the Tax Administration's Register of Real Estate Property and Statistics Finland's data on the dwelling stock that are based on the Population Register Centre's Register of Buildings and Dwellings are also used for the statistics.

New dwellings: The data of the statistics on dwelling prices are based on the information Statistics Finland receives via a private price monitoring service about transactions in new dwellings made by the largest real estate agents and building contractors. The monthly statistics do not contain information on new dwellings due to the scarcity of statistical data.

Used concepts:

Dwelling: A dwelling refers to a room or suite of rooms that is equipped with a kitchen, kitchenette or cooking area and is intended for year-round habitation.

Price per square metre of dwelling: The statistics are compiled from data on unencumbered prices, in other words, prices inclusive of the debt portion. The published price concept is price per square metre (EUR/m²).

Floor area of dwelling: The floor area (m²) of a dwelling is calculated from the inner surfaces of the walls enclosing it. The floor areas of auxiliary spaces (utility space, walk-in wardrobe, etc.), bathroom, hobby room, fireplace room, sauna in dwelling, washroom and changing room, and rooms used as working space if no hired employees work in them are also included in the floor area of a dwelling. Garage, cellar, sauna space in unoccupied basement, unheated storage space, balcony, porch, veranda, vestibule and unoccupied attic space are not included in the floor area of a dwelling.

First home: First-time dwelling transactions include those that are entitled to the exemption from the asset transfer tax for first-time homebuyers (www.vero.fi).

Old/new dwelling: An old dwelling refers to a dwelling that has not been completed in the examined year or the year before it. Respectively, a new dwelling refers to a dwelling completed in the statistical reference year or the year before it that is sold for the first time.

Type of building: The dwellings in the statistics are classified into blocks of flats and terraced houses according to type of building. The data on terraced houses also include detached houses whose tenure is based on ownership of housing company shares.

Type of financing: Dwellings financed with ARA subsidised housing loans and price controlled HITAS dwellings are not included in the non-subsidised dwelling category used in the statistics.

Number of rooms: A room is defined as a space with one or more windows that has a floor area of at least seven square metres and mean height of at least two metres. A hall, porch, bed recess or other similar space is not regarded as a room. Kitchen is not included in the number of rooms. Dwellings with at least

three rooms are classified into room number category 3h+. In the monthly statistics data are not published by number of rooms due to the scarcity of statistical data.

(Nominal) price index: Describes the change in prices compared to the base period of the index concerned. In the annual and quarterly indices the base periods are for old dwellings 2005, 2000, 1983 or 1970 and for new dwellings 2005, in the monthly index the base period is 2010.

Real price index: Describes the change in real prices compared to the index base period. In the annual and quarterly indices the base periods are for old dwellings 2005, 2000, 1983 or 1970 and for new dwellings 2005, in the monthly index the base period is 2010. The real price index is derived by dividing the point figure of the nominal price index for the area with the point figure of the Consumer Price Index for the whole country in the corresponding time period and base year.

Distribution parameters:

Q1 (lower quartile) = 25% of the observations remain below.

Med (median) = Middle observation when the observations are arranged in size order.

Q3 (upper quartile) = 75% of the observations remain below.

Classifications:

Annual and quarterly statistics:

Regional division, old dwellings: The statistics use diverse area combinations, such as Greater Helsinki Area, satellite municipalities around the Greater Helsinki Area, regions and urban sub-areas. The Greater Helsinki Area comprises Helsinki, Espoo, Vantaa and Kauniainen, which in statistics is included in Espoo. The satellite municipalities are Hyvinkää, Järvenpää, Kerava, Kirkkonummi, Nurmijärvi, Riihimäki, Sipoo, Tuusula and Vihti. Regions are defined according to the decision of the Council of State. The urban sub-areas are formed of postal code areas using price level and location as the criteria. Details of the used regional classifications are appended to this publication and can be found on Statistics Finland's website.

Regional division, new dwellings: Due to the low number of transactions, the statistics on the prices of new dwellings are compiled according to a less detailed regional division than the statistics on the prices of old dwellings. The classification used in the statistics on the prices of new dwellings also takes into consideration the needs of the Consumer Price Index, hence the regional classification uses the division into major regions. The area categories are Whole country, Greater Helsinki, Rest of Finland (the same as with old dwellings, Whole country exclusive of Greater Helsinki), Rest of Uusimaa (exclusive of Greater Helsinki) and major regions Southern Finland, Western Finland, Eastern Finland, and Northern Finland.

Monthly statistics:

Regional division: The area categories are: Whole country, Greater Helsinki, Rest of Finland (Whole country exclusive of Greater Helsinki), Satellite municipalities (Hyvinkää, Järvenpää, Kerava, Kirkkonummi, Nurmijärvi, Riihimäki, Sipoo, Tuusula, Vihti), Helsinki, Espoo-Kauniainen, Vantaa, Tampere, Turku, Oulu and major regions Southern Finland, Western Finland, Eastern Finland, and Northern Finland.

2. Methodological description

The calculation method of the index for prices of dwellings in housing companies 2005=100 combines the classical approach based on classification of data and regression analysis (so called hedonic method). The index aims at answering the question how much more/less a typical dwelling in a housing company costs now compared with before on the basis of the total number of actual transaction prices. For this reason, monitoring average price changes will not necessarily provide an adequate answer, since average prices also change because the composition of dwellings sold at different times is not the same. For example, the relative shares of different types of dwellings may vary from quarter to quarter. The method helps to distinguish better than before the real price development from price changes caused by dwelling characteristics in different time period.

Because location, type of building and number of rooms are the most important price determinants, the composition of sold dwellings is first standardised for these variables by classification. The regional classification has been constructed so as to be geographically meaningful and as homogeneous as possible

in respect of price levels. In the statistics on old dwelling prices the largest municipalities are divided into several sub-areas, and the smallest municipalities where few transactions take place have been combined. In the statistics on new dwelling prices the regional classification has been formed according to six sensible geographical entities because due to the low number of observations in the data a more detailed classification cannot be used. In respect of both old and new dwellings, the dwellings within an area have been stratified by type of building into dwellings in blocks of flats, and dwellings in terraced and detached houses. Dwellings in blocks of flats have been classified further by number of rooms into dwellings with one room, dwellings with two rooms and dwellings with three or more rooms. Dwellings in terraced houses have been divided by number of rooms into two categories — dwellings with fewer than, and dwellings with at least three rooms.

The used classification does not necessarily homogenise the data sufficiently, because factors affecting price, such as micro-location, floor area, year of completion, and so on, are not controlled for by the classification. The price data of old dwellings contains information on the location of the dwelling on postal code level and on age and floor area. The price data of new dwellings contains information on the location of the dwelling on postal code level and on floor area. With the help of the regression model this information is used to adjust for changes in the composition of the data between the base and reference periods. The quality adjustment means the following: if in a statistical quarter dwellings in a certain area are on average older than in the base time period, the index must be adjusted upwards, because the lower price due to the higher age of dwellings would otherwise be erroneously interpreted as a price fall. A more detailed methodological description is published in Statistics Finland's Research Reports series (Koev, Eugen: Combining Classification and Hedonic Quality Adjustment in Constructing a House Price Index. Helsinki, Statistics Finland, Research Reports (2013)).

The overall index point-number for the whole country is obtained via aggregated price changes in every index class and price adjustments so called log-Laspeyres formula. The weights for old dwellings are derived as value-shares of stock of apartments in 2005. Respectively, the weights of new dwellings are the consumption expenditure weights of dwellings purchased in 2005.

3. Correctness and accuracy of the data

3.1. Reliability of the statistics

The statistics on the prices of old dwellings are based on the Tax Administration's asset transfer tax data, which cover the transactions of all dwellings whose tenure is based on ownership of housing company shares. All transactions of old housing company dwellings are not included immediately in the statistics, because the purchaser is allowed two months to pay the asset transfer tax. Many purchasers pay the tax faster than this and in transactions intermediated by real estate agents the tax is paid at the time of transaction.

The statistics on the prices of new dwellings are based on data obtained from the largest real estate agents and building contractors and the data are final when first published.

The statistics describe the housing company share market by area relatively reliably. However, the number of included transactions should be taken into consideration. If few transactions have been made, a couple of deviating cases may affect the average price for an area significantly.

3.2. Accuracy of the statistics

Cases with missing information about transaction prices or floor area, or with exceptionally high or low price due to contract within family or error in data entry are not accepted into the statistics. The acceptable ranges of prices per square metre by area are defined yearly for old and new dwellings.

[The price data become revised](#) over the year so that the final data for the year are published in the release concerning the first quarter of the following year. On the average, the revision in monthly statistics on prices of dwellings amounts to 0.3 per cent either way for the whole country. The revision is larger for smaller geographical areas. The average revision in quarterly statistics amounts to 0.2 per cent either way for the whole country.

3.3. Use of the parameters of the statistics

Because the price index takes into account changes in the distribution of year of completion, floor area and location of dwellings sold at different points in time, and their effects on prices, the average prices of the statistics vary differently from the price index. The price index and the average price are each useful measures for different situations.

The *price index* endeavours to measure as accurately as possible how much more/less an average dwelling in a housing company costs now than it did before. The *average price*, in turn, describes the prevailing price level for sold dwellings without considering whether they are older, newer, larger or smaller than dwellings sold before.

4. Timeliness and promptness of published data

4.1. Publication frequency and measurement period of the statistics

The statistics on prices of dwellings in housing companies are published monthly, quarterly and annually. Monthly data are released one month from the end of the statistical reference month and quarterly data are released simultaneously with the data for the last month of each quarter. Quarterly data are statistically more reliable than monthly data and contain more detailed information by area. The annual statistics are published in connection with the statistical release for the first quarter of the year following it. The annual statistics are published in connection with the statistical release for the first quarter of the year following it.

4.2. Preliminarity of the statistics

When the statistics are published they cover approximately two-thirds of all transactions made in the latest quarter. The latest monthly statistics contain around two-fifths of all transactions. Statistics Finland receives the data on the remainder as they arrive at the Tax Administration.

Monthly and quarterly data are updated retrospectively in connection with each release so that the final data for the statistical year are published with the data for the first quarter of the year following it.

5. Accessibility and transparency of the data

A latest statistical release will be published from the statistics on Statistics Finland's web pages on the publication date of the statistics on prices of dwellings. Data concerning dwelling prices can also be found on Statistics Finland's web pages and database service. The essential metadata have been described in this document, which is incorporated into the publication of statistics on dwelling prices in housing companies. This document is also available on Statistics Finland's web pages.

These statistics cover only dwelling transactions in housing company shares. Especially out of the Greater Helsinki area, there are numerous real estate transactions that are not included in these statistics. Statistics Finland publishes a separate price index on real estate prices. Data on real estate transaction prices by municipality are available from the National Board of Survey.

6. Comparability of the statistics

6.1. Comparability with other data

When these statistics are compared with data from other producers the source of the basic data should be considered. Statistics Finland's data derive from the Tax Administration's comprehensive files, and thus cover exhaustively all completed transactions.

In January 2013, combinations of register data were updated. This increases the number of transactions by around three to five per cent on the annual level compared with earlier years.

6.2. Comparability over time

Data compiled from the Tax Administration's asset transfer tax data are available on prices of old dwellings in housing companies quarterly starting from the year 1987. Older data are available going back to 1970. Data provided by real estate agents are available for the period 1970 to 1986 and the used classification is much less detailed. As regards new dwellings, the time series based on data provided by real estate agents have been calculated quarterly from 2005 onwards.

7. Coherence and consistency

In addition to the statistics on prices of dwellings in housing companies, Statistics Finland releases quarterly statistics on real estate prices. Besides the data published by Statistics Finland, real estate agents, credit institutions and banks also publish information concerning dwelling prices and their development.

Inquiries

Petri Kettunen 09 1734 3558

Tomi Martikainen 09 1734 3632

Director in charge:

Leena Storgårds

asuminen@stat.fi

www.stat.fi

Source: Prices of dwellings in housing companies. Statistics Finland